



6,100 SF AVAILABLE

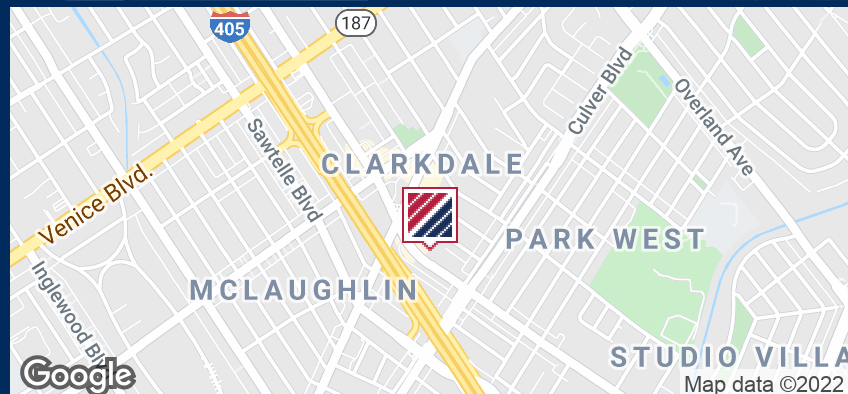
CREATIVE/PRODUCTION STUDIO SPACE

**FOR LEASE**

4200 SEPULVEDA BLVD. UNIT 102  
CULVER CITY | CA, 90230

**PROPERTY FEATURES:**

- Air Conditioned Unit
- Creative/Production Studios
- Editing and Screening Rooms
- 10 Gated Secured Parking
- Retail Amenities Nearby
- \$3.25/SF MG



FOR MORE INFORMATION PLEASE CONTACT:

**DAVID FREITAG**

EXECUTIVE VICE PRESIDENT

P: 213.270.2235 | M: 310.413.9390

david.freitag@daumcommercial.com

CADRE #00855673

**IMANI MCMILLAN**

ASSOCIATE

P: 213.270.2230 | M: 310.800.4589

imcmillan@daumcommercial.com

CADRE #02057115

Although all information is furnished regarding for sale, rental or financing is from sources deemed reliable, such information has not been verified and no express representation is made nor is any to be implied as to the accuracy thereof, and it is submitted subject to errors, omissions, changes of price, rental or other conditions, prior sale, lease or financing, or withdrawal without notice.

**DAUM**  
COMMERCIAL REAL ESTATE SERVICES

4200 SEPULVEDA BLVD. UNIT 102  
CULVER CITY | CA

**FOR LEASE**  
CREATIVE/PRODUCTION STUDIO SPACE



Although all information is furnished regarding for sale, rental or financing is from sources deemed reliable, such information has not been verified and no express representation is made nor is any to be implied as to the accuracy thereof, and it is submitted subject to errors, omissions, changes of price, rental or other conditions, prior sale, lease or financing, or withdrawal without notice.

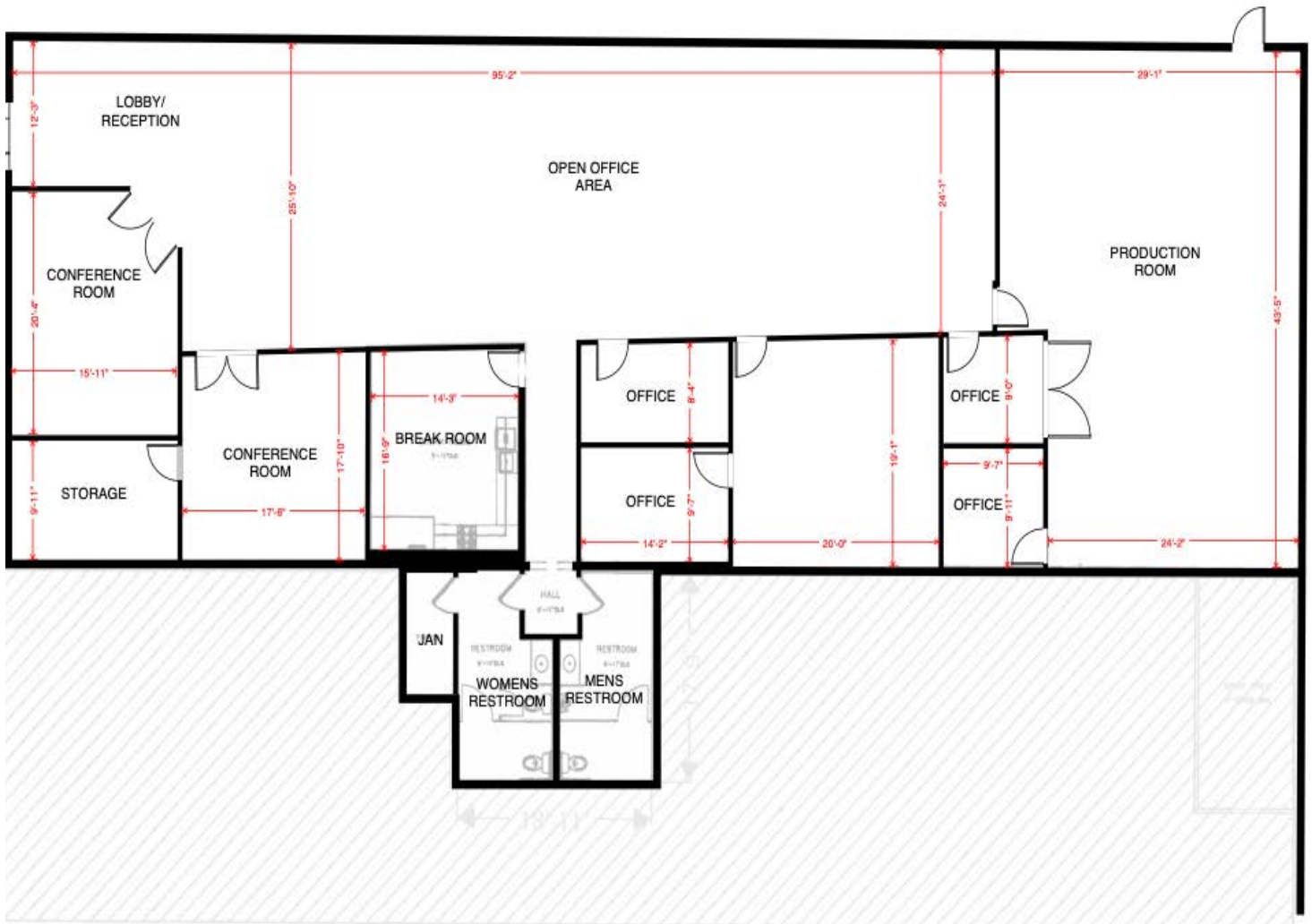
**DAUM**  
COMMERCIAL REAL ESTATE SERVICES

# 4200

SEPULVEDA BLVD. UNIT 102  
CULVER CITY | CA

# FOR LEASE

CREATIVE/PRODUCTION STUDIO SPACE



4200 SEPULVEDA BLVD., SUITE 102, CULVER CITY CA 90230

UNIT LAYOUT

Although all information is furnished regarding for sale, rental or financing is from sources deemed reliable, such information has not been verified and no express representation is made nor is any to be implied as to the accuracy thereof, and it is submitted subject to errors, omissions, changes of price, rental or other conditions, prior sale, lease or financing, or withdrawal without notice.

