



INTERSTATE 15 FRONTAGE

840-C

SOUTH ROCHESTER AVENUE
ONTARIO | CA

FOR LEASE



7,062 SF
SQUARE FEET



TBD
OFFICE SF



18 ft
CLEAR HEIGHT



One (12'x12')
GL DOOR



FOR MORE INFORMATION PLEASE CONTACT:

NOAH SAMARIN
EXECUTIVE VICE PRESIDENT | PRINCIPAL
P: 909.912.0007 | M: 714.812.1289
noah.samarin@daumcommercial.com
CADRE #01755814

CHRISTINA GURDZHIAN
VICE PRESIDENT
P: 909.980.1234
christina.gurdzhyan@daumcommercial.com
CADRE #02071335

NICK CANTU
ASSOCIATE VICE PRESIDENT
P: 909.652.9054 | M: 714.787.9454
ncantu@daumcommercial.com
CADRE #02016719

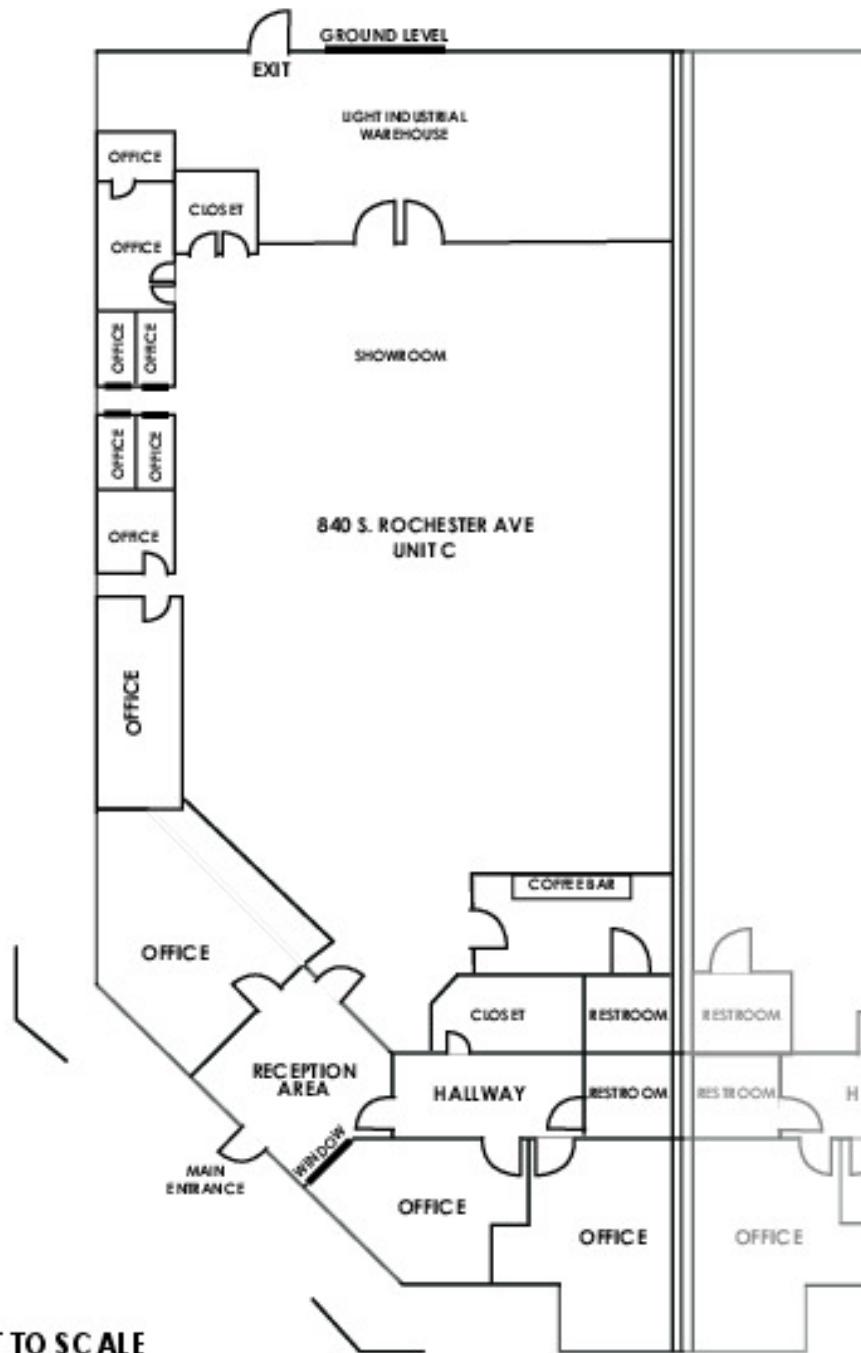
Although all information is furnished regarding for sale, rental or financing is from sources deemed reliable, such information has not been verified and no express representation is made nor is any to be implied as to the accuracy thereof, and it is submitted subject to errors, omissions, changes of price, rental or other conditions, prior sale, lease or financing, or withdrawal without notice.



840

SOUTH ROCHESTER AVENUE, UNIT C
ONTARIO | CA

FOR LEASE

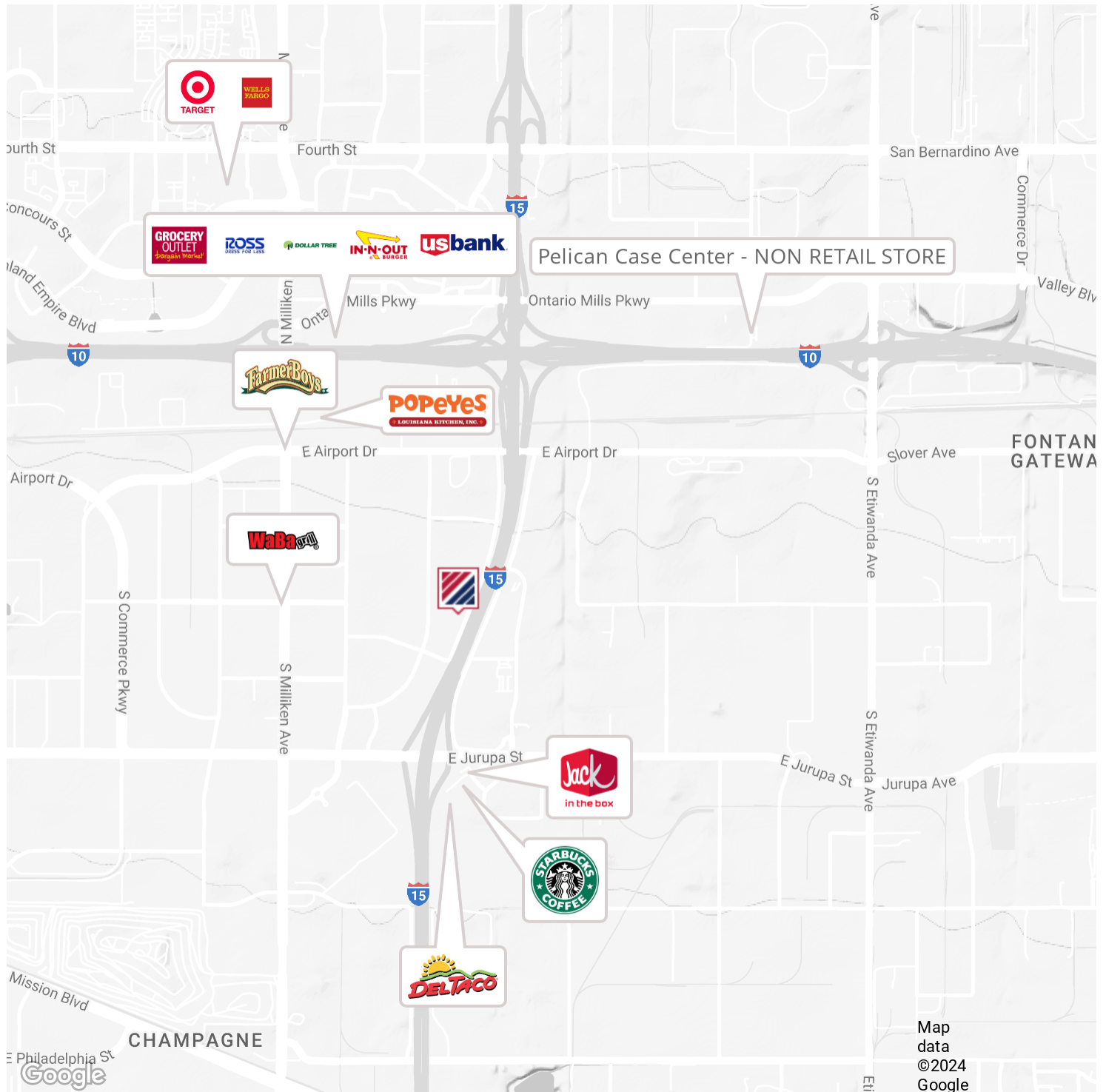


Although all information is furnished regarding for sale, rental or financing is from sources deemed reliable, such information has not been verified and no express representation is made nor is any to be implied as to the accuracy thereof, and it is submitted subject to errors, omissions, changes of price, rental or other conditions, prior sale, lease or financing, or withdrawal without notice.

840

SOUTH ROCHESTER AVENUE, UNIT C
ONTARIO | CA

FOR LEASE



Although all information is furnished regarding for sale, rental or financing is from sources deemed reliable, such information has not been verified and no express representation is made nor is any to be implied as to the accuracy thereof, and it is submitted subject to errors, omissions, changes of price, rental or other conditions, prior sale, lease or financing, or withdrawal without notice.

