



1104-1106

E. 8TH STREET
LOS ANGELES | CA



FOR SUBLEASE

INDUSTRIAL PROPERTY



4,620 SF
SQUARE FEET



500
OFFICE SF



13
CLEAR HEIGHT



2
GL DOORS

PROPERTY HIGHLIGHTS

- 4,620 SF Available
- 5,228 SF Lot Size
- 200 Amps, 120/480 Volts, 3 Phase, 4 Wire Power
- 4 Parking Spaces
- Great Building in the Latino Products District
- Just West of Central Ave
- Great Foot & Car Traffic
- Asking Rate: \$15,000.00 per Month

FOR MORE INFORMATION PLEASE CONTACT:

KAM ELGHANIAN

VICE PRESIDENT

P: 213.820.1686

kamelghanian@aol.com

CADRE #01044538

Although all information is furnished regarding for sale, rental or financing is from sources deemed reliable, such information has not been verified and no express representation is made nor is any to be implied as to the accuracy thereof, and it is submitted subject to errors, omissions, changes of price, rental or other conditions, prior sale, lease or financing, or withdrawal without notice.

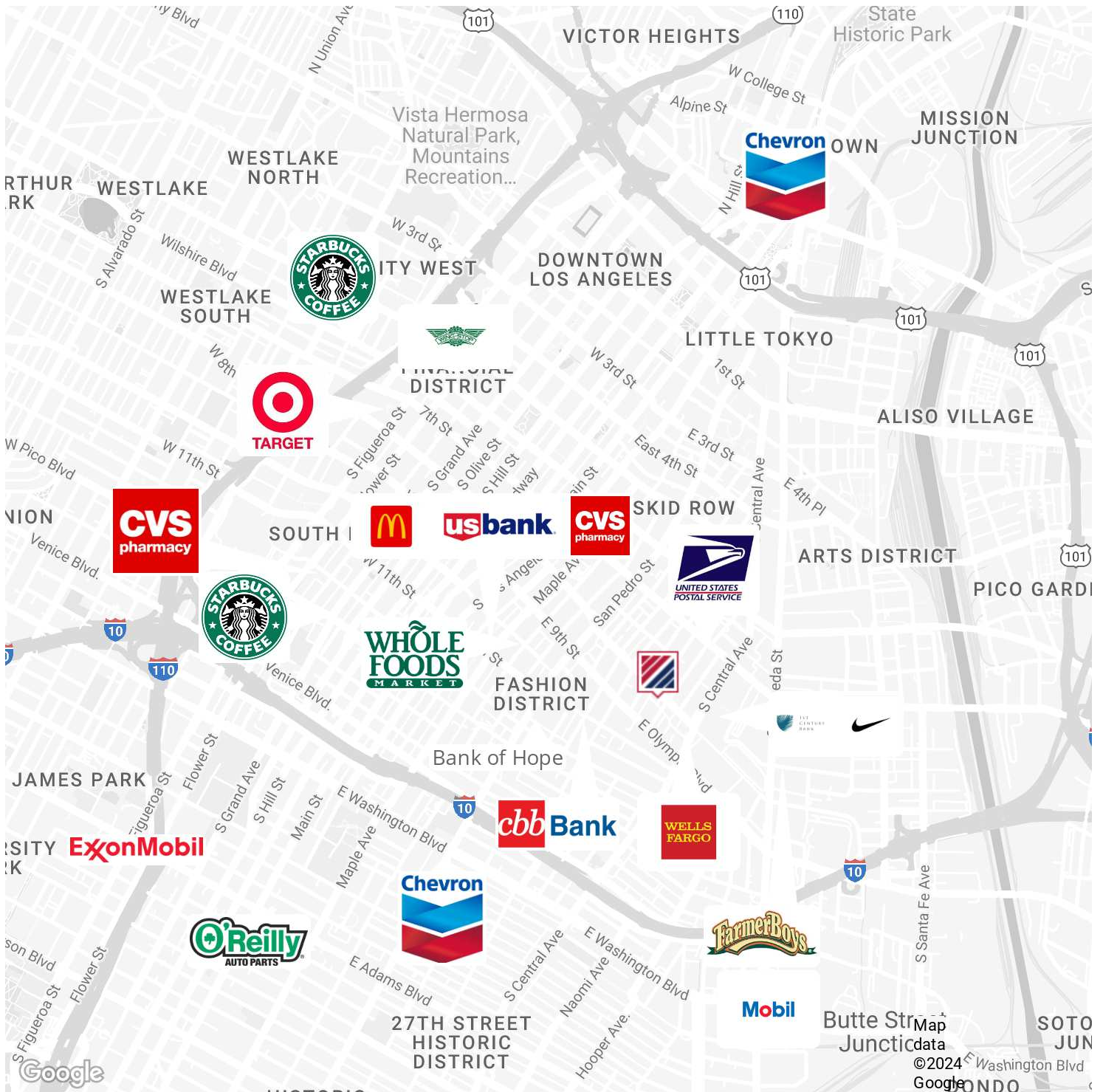
DAUM
COMMERCIAL REAL ESTATE SERVICES

1104-1106

E. 8TH STREET
LOS ANGELES | CA

FOR SUBLEASE

INDUSTRIAL PROPERTY



Although all information is furnished regarding for sale, rental or financing is from sources deemed reliable, such information has not been verified and no express representation is made nor is any to be implied as to the accuracy thereof, and it is submitted subject to errors, omissions, changes of price, rental or other conditions, prior sale, lease or financing, or withdrawal without notice.

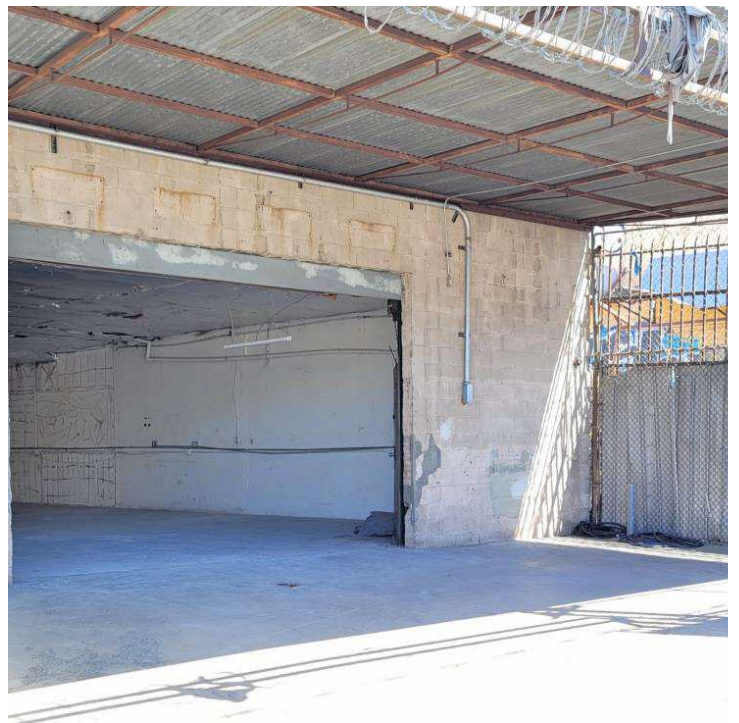
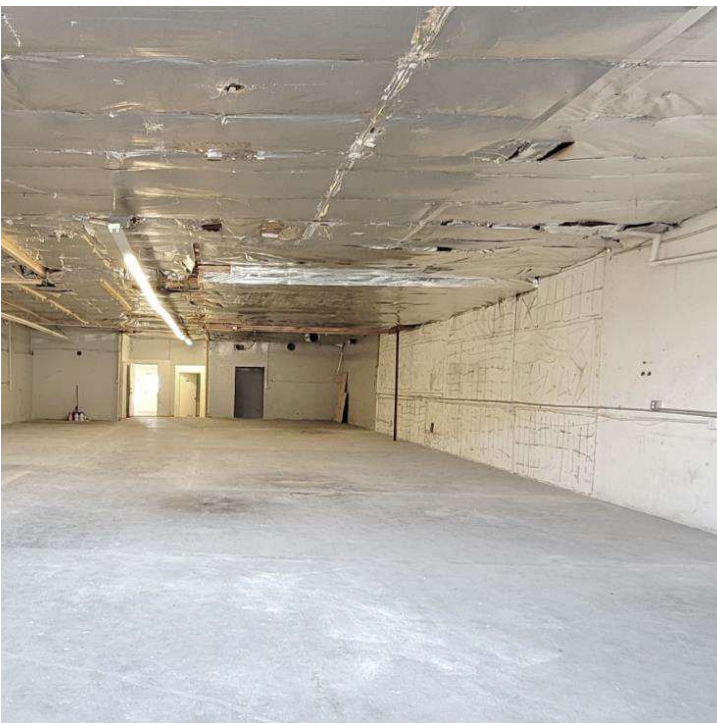


1104-1106

E. 8TH STREET
LOS ANGELES | CA

FOR SUBLEASE

INDUSTRIAL PROPERTY



Although all information is furnished regarding for sale, rental or financing is from sources deemed reliable, such information has not been verified and no express representation is made nor is any to be implied as to the accuracy thereof, and it is submitted subject to errors, omissions, changes of price, rental or other conditions, prior sale, lease or financing, or withdrawal without notice.

DAUM
COMMERCIAL REAL ESTATE SERVICES