



# FOR SALE

398 N 10TH ST.  
COLTON | CA 92324

FOR MORE INFORMATION PLEASE CONTACT:

**LEE SPENCE**  
**EXECUTIVE VICE PRESIDENT | PRINCIPAL**  
P: 909.652.9044 | M: 909.969.8800  
lee.spence@daumcommercial.com  
CADRE #00954487

**KEVIN FREJLACH**  
**VICE PRESIDENT**  
P: 909.912.0005 | M: 909.225.5592  
kevin.frejlach@daumcommercial.com  
CADRE #01210292

## Property Features

- 2,800 SF Office Building
- Commercial Zoned
- Fully Fenced Contractor's Yard
- 2,600 SF Metal Warehouse
- Easy Freeway Access to the 10 & 215 Freeways
- Needs Rehab
- Asking Sale Price: \$850,000

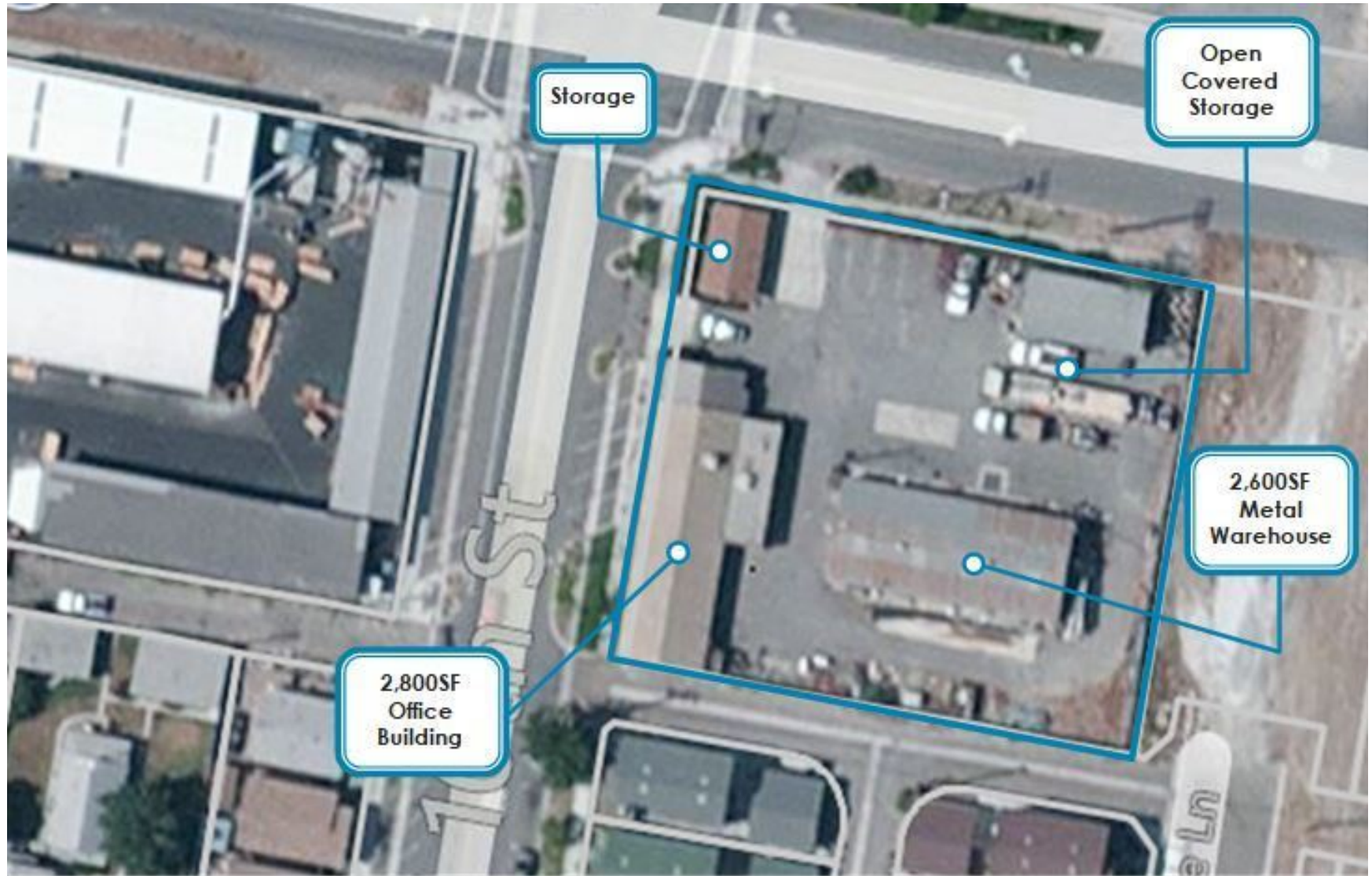
Although all information is furnished regarding for sale, rental or financing is from sources deemed reliable, such information has not been verified and no express representation is made nor is any to be implied as to the accuracy thereof, and it is submitted subject to errors, omissions, changes of price, rental or other conditions, prior sale, lease or financing, or withdrawal without notice.

**DAUM**  
COMMERCIAL REAL ESTATE SERVICES

6,000 SF CONTRACTORS YARD

398 N 10TH ST.  
COLTON | CA 92324

**FOR SALE**



FOR MORE INFORMATION PLEASE CONTACT:

**LEE SPENCE**  
EXECUTIVE VICE PRESIDENT | PRINCIPAL

**P: 909.652.9044 | M: 909.969.8800**  
lee.spence@daumcommercial.com  
CADRE #00954487

**KEVIN FREJLACH**  
VICE PRESIDENT

**P: 909.912.0005 | M: 909.225.5592**  
kevin.frejlach@daumcommercial.com  
CADRE #01210292

Although all information is furnished regarding for sale, rental or financing is from sources deemed reliable, such information has not been verified and no express representation is made nor is any to be implied as to the accuracy thereof, and it is submitted subject to errors, omissions, changes of price, rental or other conditions, prior sale, lease or financing, or withdrawal without notice.





398 N 10TH ST.  
COLTON | CA 92324

FOR SALE



View of Office Building



Covered Storage Building



Southern Side Yard Area



Inside GL Door



600 SF Storage Building



2,600 SF Metal Warehouse

FOR MORE INFORMATION PLEASE CONTACT:

**LEE SPENCE**  
EXECUTIVE VICE PRESIDENT | PRINCIPAL

**P: 909.652.9044 | M: 909.969.8800**  
lee.spence@daumcommercial.com  
CADRE #00954487

**KEVIN FREJLACH**  
VICE PRESIDENT

**P: 909.912.0005 | M: 909.225.5592**  
kevin.frejlach@daumcommercial.com  
CADRE #01210292

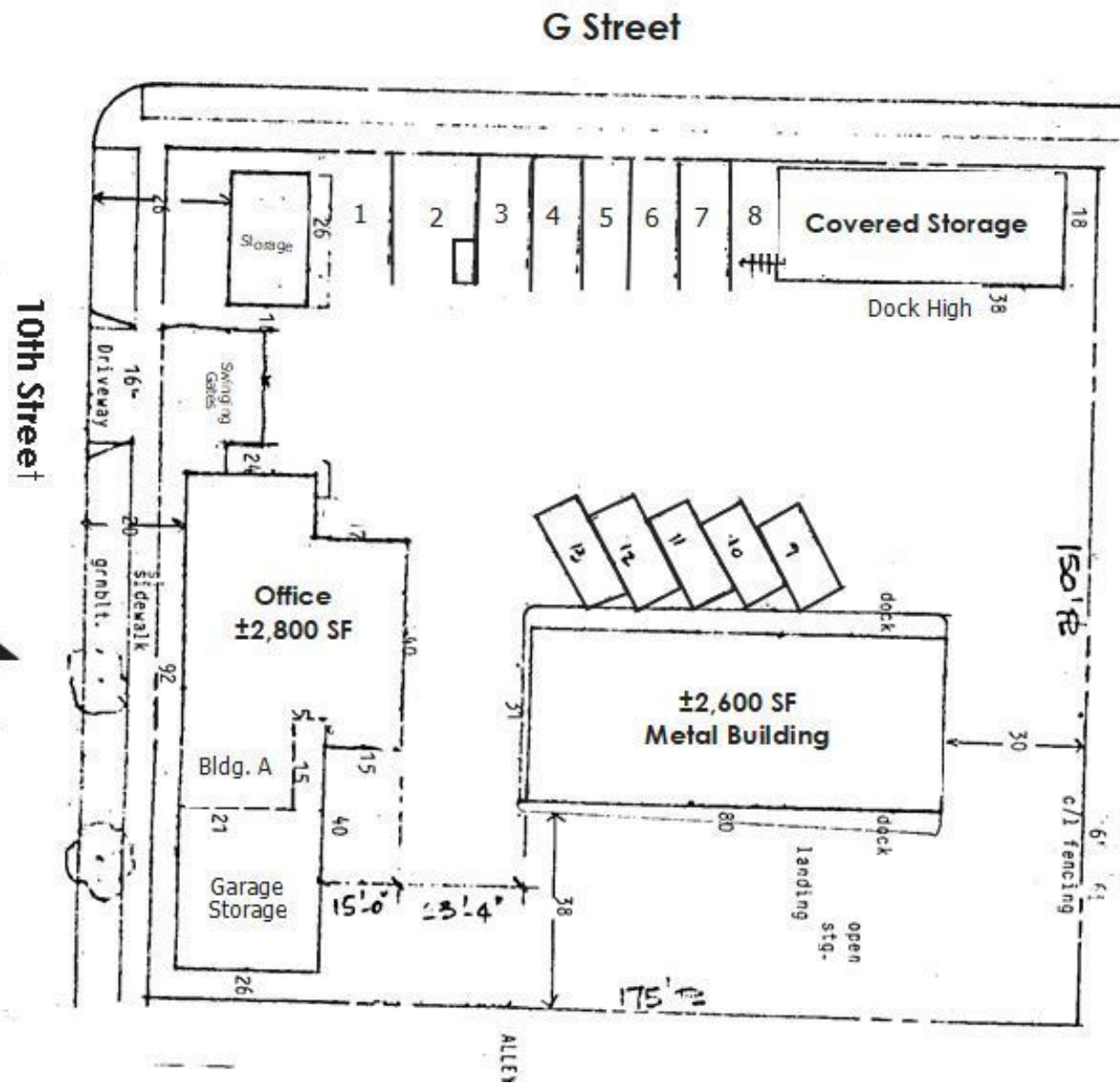
Although all information is furnished regarding for sale, rental or financing is from sources deemed reliable, such information has not been verified and no express representation is made nor is any to be implied as to the accuracy thereof, and it is submitted subject to errors, omissions, changes of price, rental or other conditions, prior sale, lease or financing, or withdrawal without notice.

**DAUM**  
COMMERCIAL REAL ESTATE SERVICES



398 N 10TH ST.  
COLTON | CA 92324

**FOR SALE**



FOR MORE INFORMATION PLEASE CONTACT:

**LEE SPENCE**  
EXECUTIVE VICE PRESIDENT | PRINCIPAL

P: 909.652.9044 | M: 909.969.8800  
lee.spence@daumcommercial.com  
CADRE #00954487

**KEVIN FREJLACH**  
VICE PRESIDENT

P: 909.912.0005 | M: 909.225.5592  
kevin.frejlach@daumcommercial.com  
CADRE #01210292

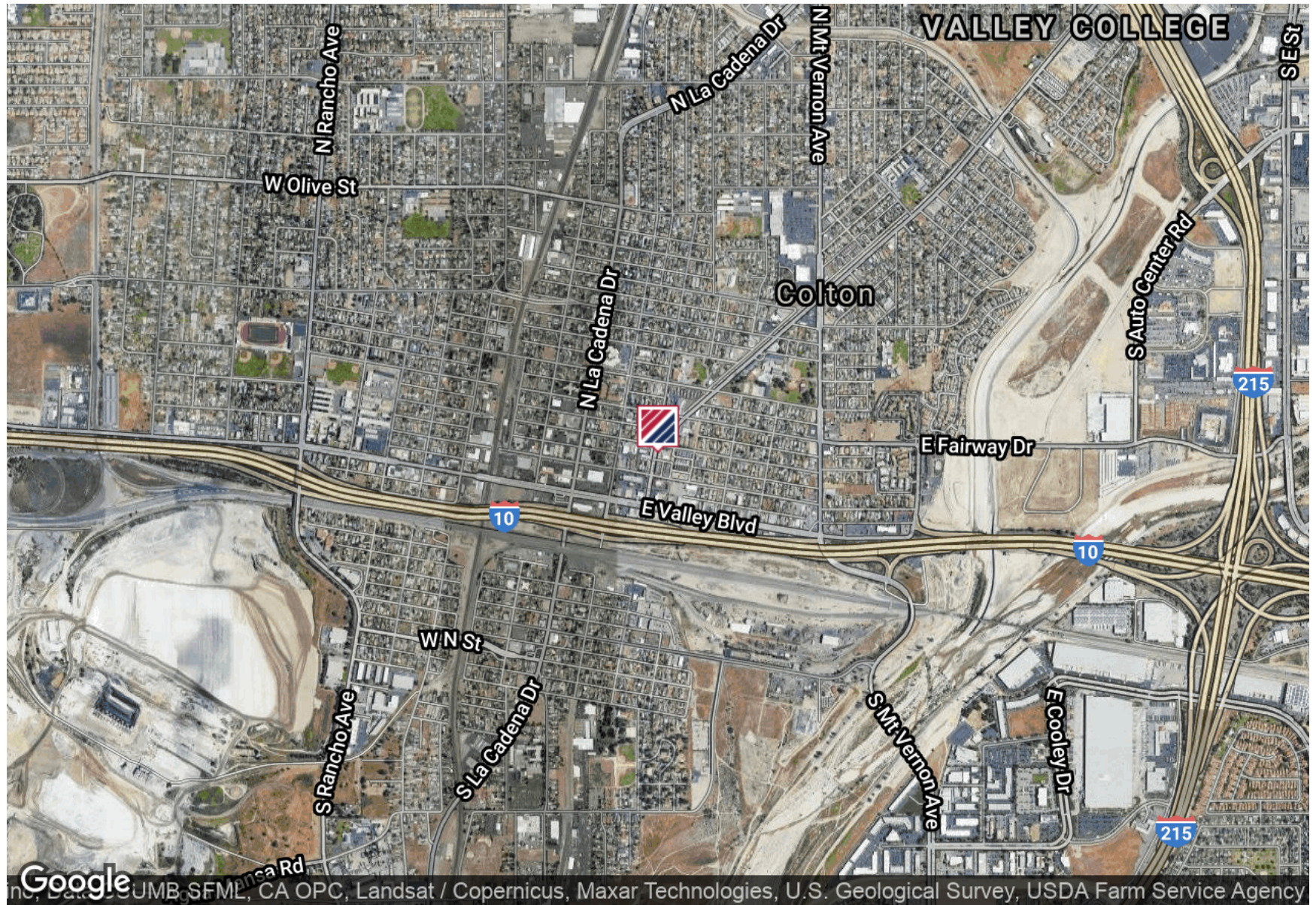
Although all information is furnished regarding for sale, rental or financing is from sources deemed reliable, such information has not been verified and no express representation is made nor is any to be implied as to the accuracy thereof, and it is submitted subject to errors, omissions, changes of price, rental or other conditions, prior sale, lease or financing, or withdrawal without notice.





**FOR SALE**

398 N 10TH ST.  
COLTON | CA 92324



FOR MORE INFORMATION PLEASE CONTACT:

**LEE SPENCE**  
EXECUTIVE VICE PRESIDENT | PRINCIPAL

P: 909.652.9044 | M: 909.969.8800  
lee.spence@daumcommercial.com  
CADRE #00954487

**KEVIN FREJLACH**  
VICE PRESIDENT

P: 909.912.0005 | M: 909.225.5592  
kevin.frejlach@daumcommercial.com  
CADRE #01210292

Although all information is furnished regarding for sale, rental or financing is from sources deemed reliable, such information has not been verified and no express representation is made nor is any to be implied as to the accuracy thereof, and it is submitted subject to errors, omissions, changes of price, rental or other conditions, prior sale, lease or financing, or withdrawal without notice.

