



EL SEGUNDO BLVD.



COMMERCIAL REAL ESTATE SERVICES

SANTA FE AVE.

E. CARLIN AVE.

520 & 526 EL SEGUNDO BLVD. 529 & 533 CARLIN STREET

COMPTON | CA

± 87,421 SF OF LAND FOR SALE OR LEASE



FENCED
YARD



13 MILES
FROM PORTS



105 FWY
PROXIMITY



12 MILES
TO LAX

FOR MORE INFORMATION, CONTACT:

Anthony Bergeman 
Executive Vice President
310.538.6729
abergeman@daumcommercial.com
CA License #01841828

Brad Levin
Executive Vice President | Principal
310.538.6728
blevin@daumcommercial.com
CA License #01020885

D/AQ Corp. #01129558. Maps Courtesy ©Google & ©Microsoft. Although all information is furnished regarding for sale, rental or financing is from sources deemed reliable, such information has not been verified and no express representation is made nor is any to be implied as to the accuracy thereof, and it is submitted subject to errors, omissions, changes of price, rental or other conditions, prior sale, lease or financing, or withdrawal without notice.

www.daumcommercial.com

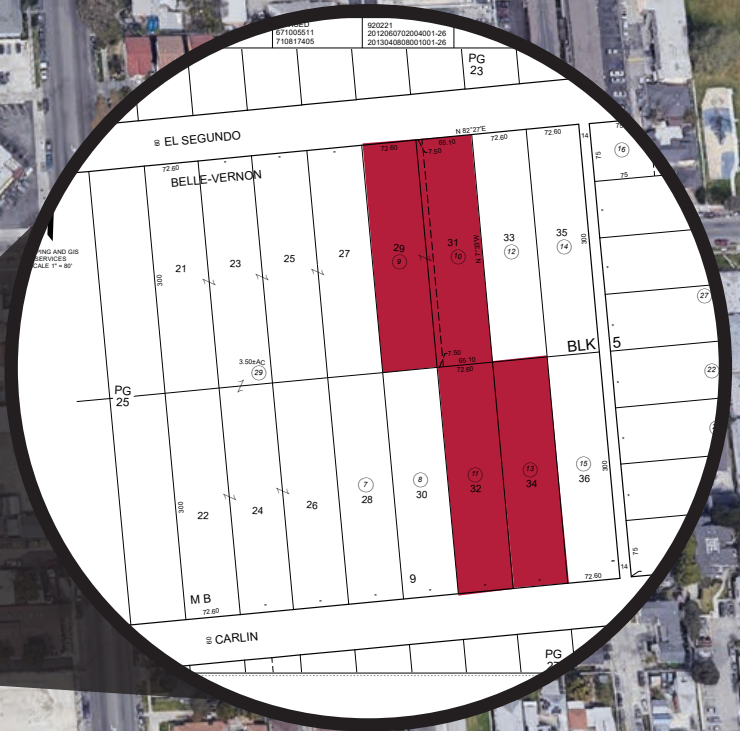
520 & 526 EL SEGUNDO BLVD.
529 & 533 CARLIN STREET

COMPTON | CA

EL SEGUNDO BLVD.

E. CARLIN ST.

N. SANTA FE AVE.



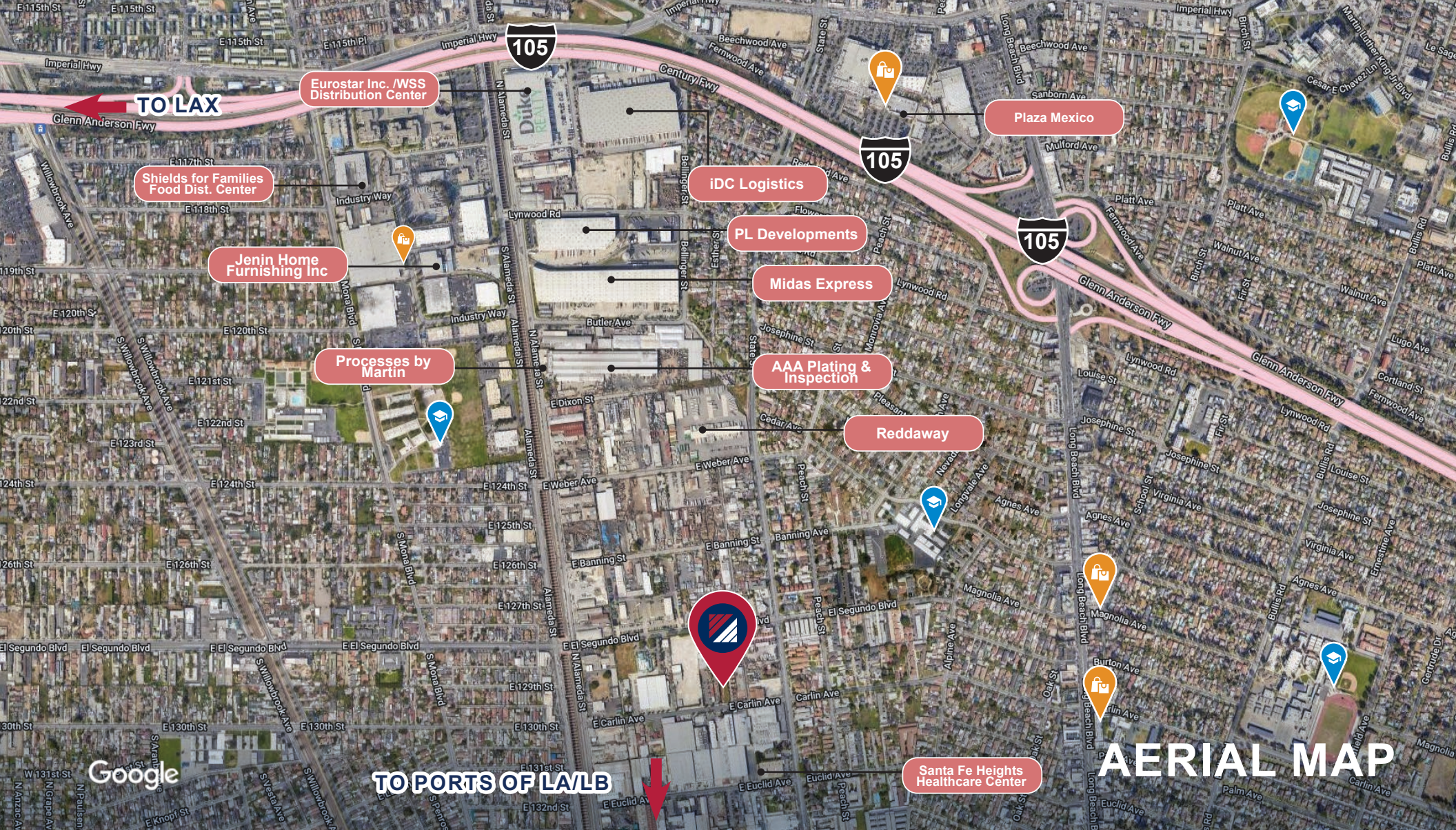
**FOR SALE
OR LEASE**
± 87,421 SF OF LAND

PROPERTY FEATURES

- Prime Alameda Corridor Adjacent Location
- Excellent Access to the 105, 710, 110 & 91 Freeways
- 13 miles to Ports of Long Beach and Los Angeles
- 12 miles to LAX
- Fenced Yard
- Partial Concrete Paved
- Lease Price and Sale Price are TBD
- Will consider leasing 520 & 526 El Segundo Blvd and 529 & 533 Carlin Street separately.

D/AQ Corp. #01129558. Maps Courtesy ©Google & ©Microsoft. Although all information is furnished regarding for sale, rental or financing is from sources deemed reliable, such information has not been verified and no express representation is made nor is any to be implied as to the accuracy thereof, and it is submitted subject to errors, omissions, changes of price, rental or other conditions, prior sale, lease or financing, or withdrawal without notice.

DAUM
COMMERCIAL REAL ESTATE SERVICES



**FOR SALE
OR LEASE**
± 87,421 SF OF LAND

**520 & 526 EL SEGUNDO BLVD.
529 & 533 CARLIN STREET**
COMPTON | CA

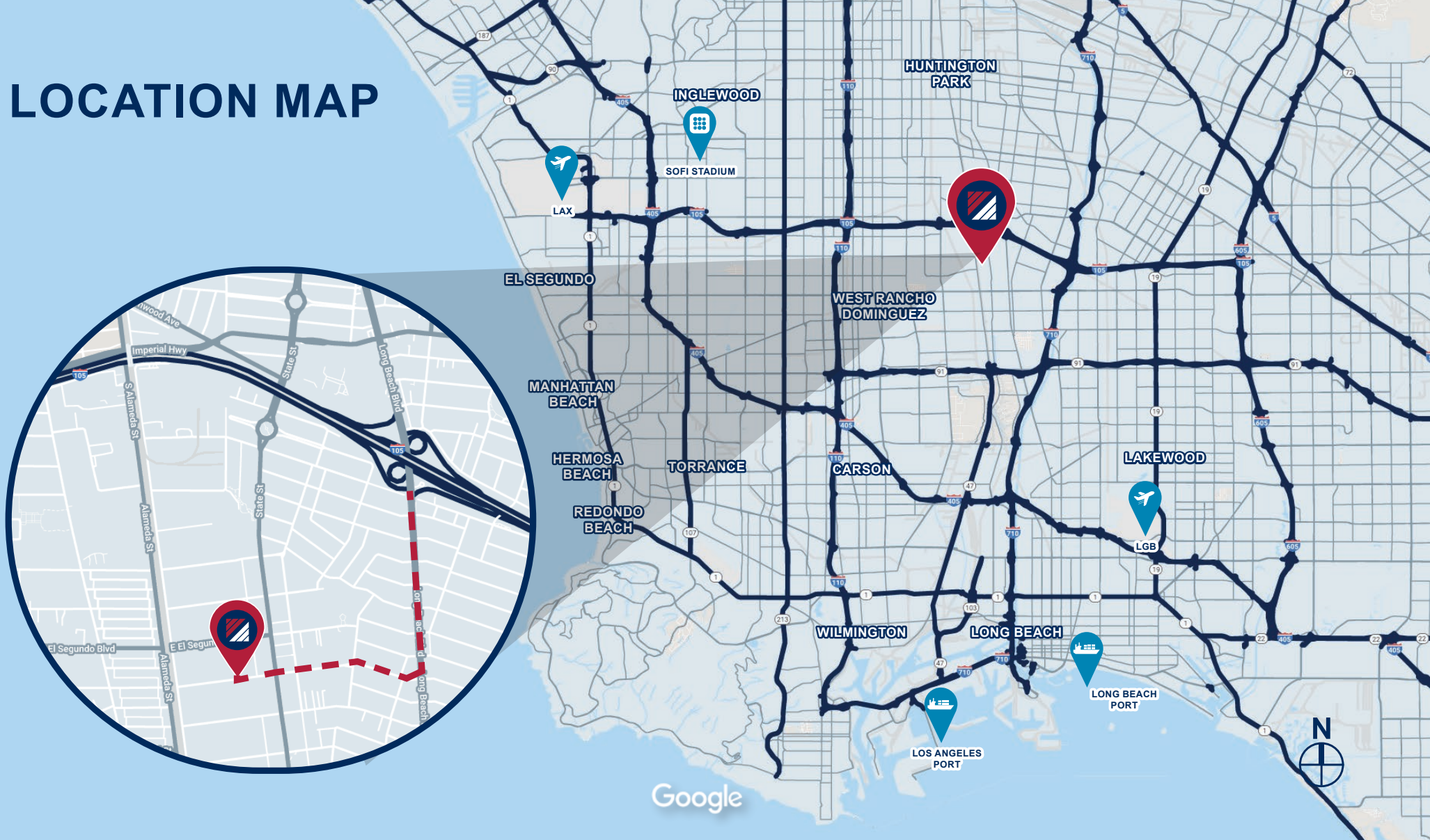
FOR MORE INFORMATION, CONTACT:
Anthony Bergeman 
Executive Vice President
310.538.6729
abergeman@daumcommercial.com
CA License #01841828

Brad Levin
Executive Vice President | Principal
310.538.6728
blevin@daumcommercial.com
CA License #01020885



D/AQ Corp. #01129558. Maps Courtesy ©Google & ©Microsoft. Although all information is furnished regarding for sale, rental or financing is from sources deemed reliable, such information has not been verified and no express representation is made nor is any to be implied as to the accuracy thereof, and it is submitted subject to errors, omissions, changes of price, rental or other conditions, prior sale, lease or financing, or withdrawal without notice.

LOCATION MAP



**FOR SALE
OR LEASE**
± 87,421 SF OF LAND

**520 & 526 EL SEGUNDO BLVD.
529 & 533 CARLIN STREET**
COMPTON | CA

FOR MORE INFORMATION, CONTACT:
Anthony Bergeman 
Executive Vice President
310.538.6729
abergeman@daumcommercial.com
CA License #01841828

Brad Levin
Executive Vice President | Principal
310.538.6728
blevin@daumcommercial.com
CA License #01020885

D/AQ Corp. #01129558. Maps Courtesy ©Google & ©Microsoft. Although all information is furnished regarding for sale, rental or financing is from sources deemed reliable, such information has not been verified and no express representation is made nor is any to be implied as to the accuracy thereof, and it is submitted subject to errors, omissions, changes of price, rental or other conditions, prior sale, lease or financing, or withdrawal without notice.

DAUM
COMMERCIAL REAL ESTATE SERVICES