

**WAREHOUSE
6,307 SF**

LOS ANGELES WAREHOUSE



813 E. SLAUSON AVE. | LOS ANGELES | CA

FOR LEASE

FOR MORE INFORMATION, PLEASE CONTACT US:



ALONDRA SALAZAR

P: 213.270.2226
asalazar@daumcre.com
CA: 02222628



LUI SALAZAR

P: 213.270.2229 - M: 626.818.0444
lsalazar@daumcre.com
CA: 02118236



IAN GROSSMAN

P: 213.270.2219 - M: 914.610.5398
igrossman@daumcre.com
CA: 02179242



DAVID FREITAG

P: 213.270.2235 | M: 310.413.9390
dfreitag@daumcre.com
CA: #00855673

D/AQ Corp. #01129558. Maps Courtesy ©Google & ©Microsoft. Although all information is furnished regarding for sale, rental or financing is from sources deemed reliable, such information has not been verified and no express representation is made nor is any to be implied as to the accuracy thereof, and it is submitted subject to errors, omissions, changes of price, rental or other conditions, prior sale, lease or financing, or withdrawal without notice.

www.daumcommercial.com | www.the1aindustrial.com

DAUM
COMMERCIAL REAL ESTATE SERVICES

813 E. SLAUSON AVE. | LOS ANGELES | CA

FOR LEASE

LOS ANGELES WAREHOUSE

AVAILABLE SF

Brick SF: 4,885 SF
Metal SF: 1,422 SF

Total: 6,307 SF

RATE

\$1.05 PSF MG
CAM \$.08 PSF

OCCUPANCY

Immediate

PARKING

5 Parking Spaces

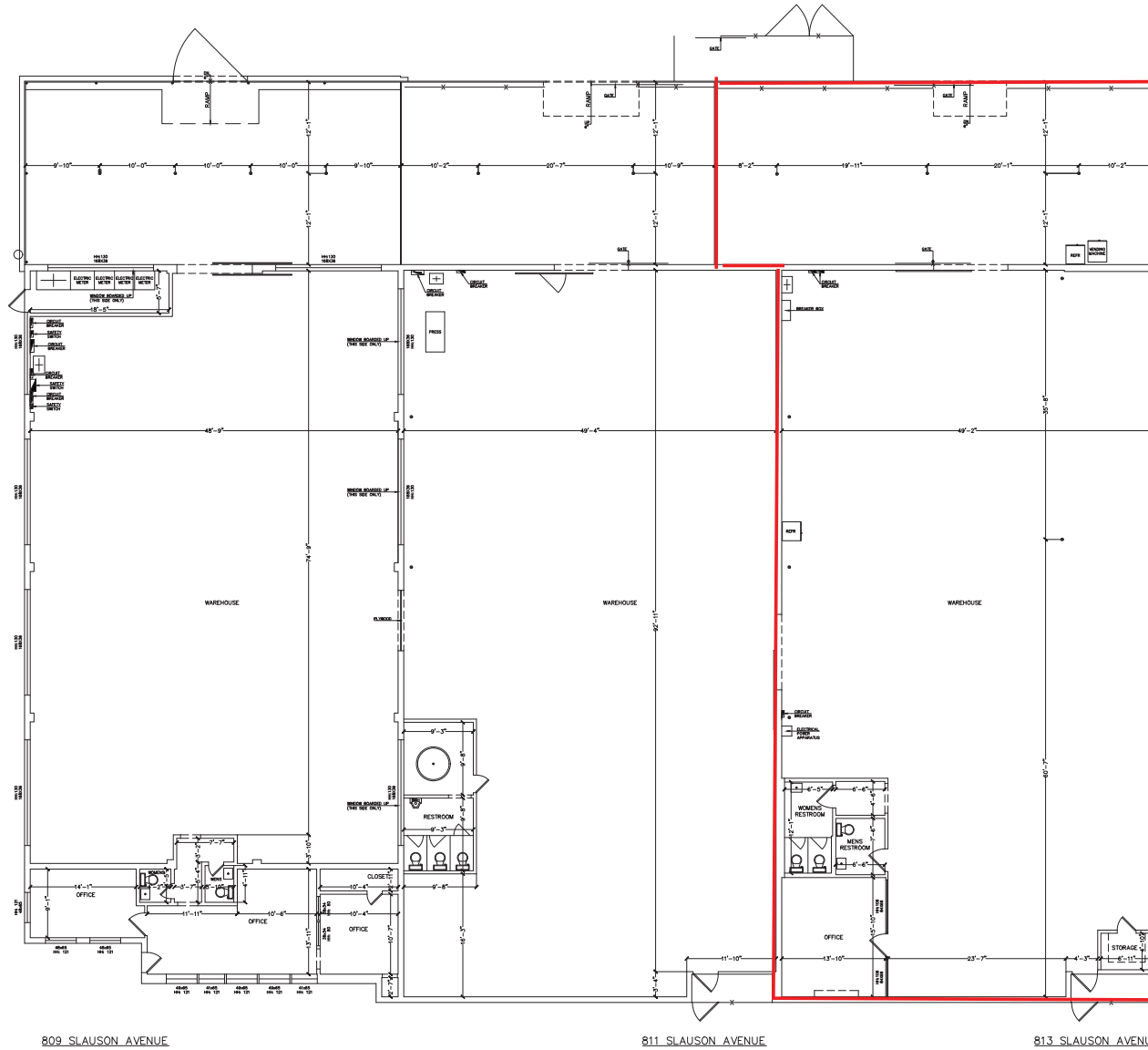
BUILDING HIGHLIGHTS

- Brick square footage: 4,885 SF
Metal square footage: 1,422 SF
Total square footage: 6,307 SF
- 12 ft Clear Height
- 5 Parking Spaces
- 1 Ground Level Door
- 400 amps/ 480 volts/ 3 phase, 4 wire



813 E. SLAUSON AVE. | LOS ANGELES | CA
FOR LEASE

LOS ANGELES WAREHOUSE



NOT TO SCALE*

D/AQ Corp. #01129558. Maps Courtesy ©Google & ©Microsoft. Although all information is furnished regarding for sale, rental or financing is from sources deemed reliable, such information has not been verified and no express representation is made nor is any to be implied as to the accuracy thereof, and it is submitted subject to errors, omissions, changes of price, rental or other conditions, prior sale, lease or financing, or withdrawal without notice.

LOS ANGELES WAREHOUSE

