

1501-1509

RIO VISTA AVE.

LOS ANGELES, 90023

LOS ANGELES COUNTY



For Lease

24,626 SF

RIO VISTA INDUSTRIAL CENTER

INSTITUTIONALLY MANAGED | FLEXIBILITY TO GROW IN A PORTFOLIO | DELIVERING UNPRECEDENTED CUSTOMER SERVICE

FOR INFORMATION CONTACT



JERRY SACKLER
213.270.2267
CA LIC# 01098039

BRYAN ABAYAN
310.883.8476
CA LIC# 02005294

Premier Industrial Business Park

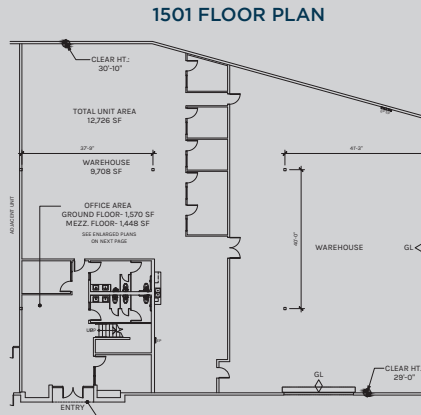
- 28' Clear Height
- Three (3) Ground Level Loading Doors
- ±5,995 Square Feet of Offices/Design Space
- Thirty-Seven (37) Fenced Secured Concrete Parking Spaces
- Sprinklered - K-25 ESFR
- Easy Access to 10, 5, 60, 110, 710 & 101 Freeways



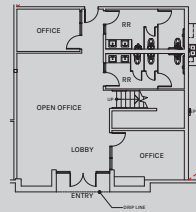
**Rexford
Industrial**

Premier Industrial Business Park

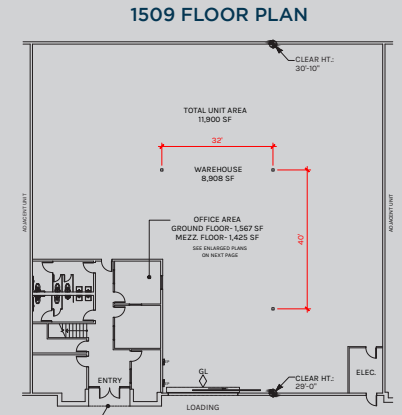
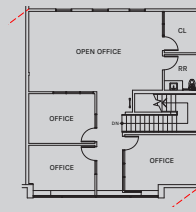
- M3 Zoning
- Lease Type: NNN
- Construction Type: CTU
- Great Office/Design Area
- Six (6) Restrooms - Two (2) Located on 2nd Floor Office
- Minutes from Downtown, Vernon, and Arts District



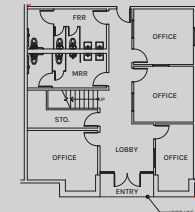
GROUND FLOOR OFFICE
1,570 SF



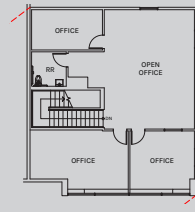
MEZZANINE FLOOR OFFICE
1,448 SF



GROUND FLOOR OFFICE
1,570 SF



MEZZANINE FLOOR OFFICE
1,448 SF

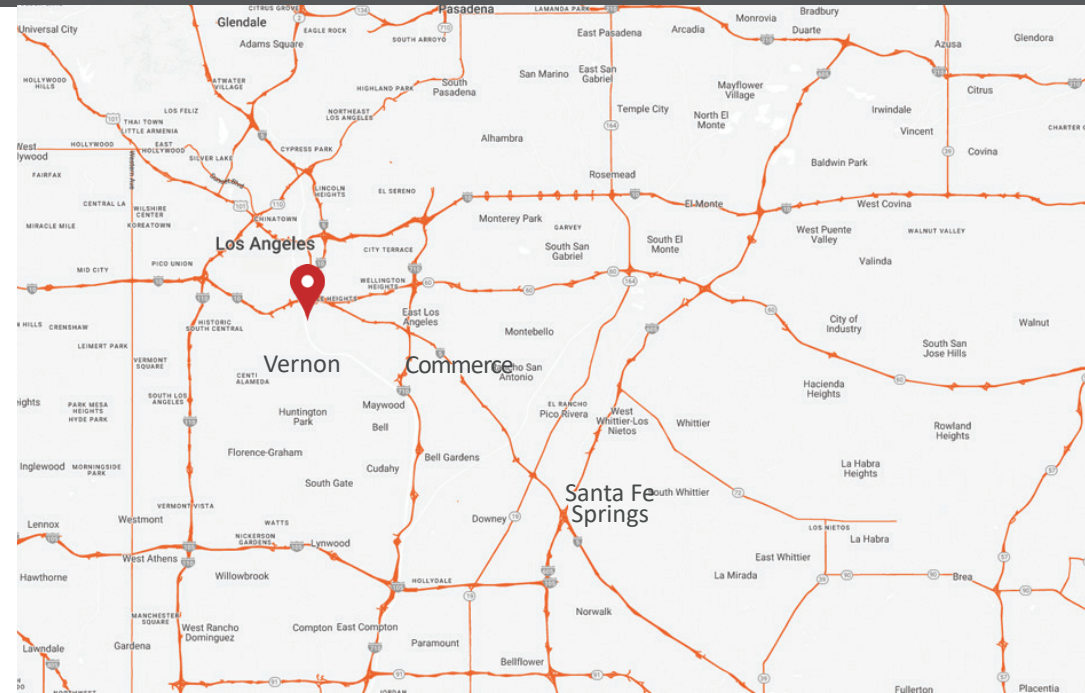
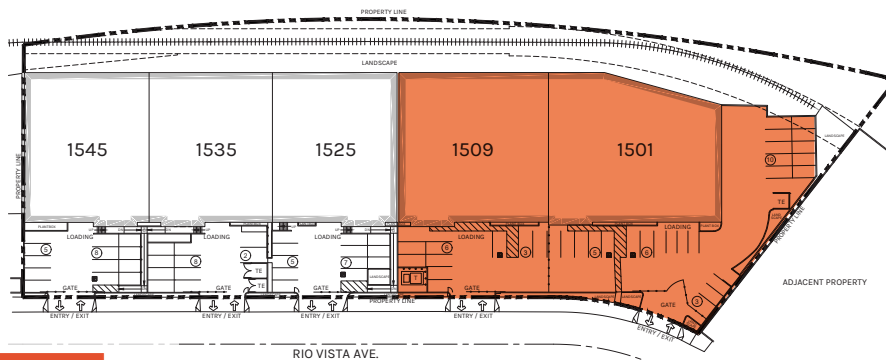


For Lease

1501-1509 RIO VISTA, LOS ANGELES, CALIFORNIA

24,626 SF

LOS ANGELES COUNTY



**Rexford
Industrial**

Photo Page

