

1501

RIO VISTA AVE.

LOS ANGELES, 90023

LOS ANGELES COUNTY

For Lease

12,726 SF

RIO VISTA INDUSTRIAL CENTER

INSTITUTIONALLY MANAGED | FLEXIBILITY TO GROW IN A PORTFOLIO | DELIVERING UNPRECEDENTED CUSTOMER SERVICE

FOR INFORMATION CONTACT



JERRY SACKLER
213.270.2267
CA LIC# 01098039

BRYAN ABAYAN
310.883.8476
CA LIC# 02005294

Premier Industrial Business Park

- 28' Clear Height
- Two (2) Ground Level Loading Doors
- ±3,003 Square Feet of Offices/Design Space
- Twenty-Seven (27) Fenced Secured Concrete Parking Spaces
- Sprinklered - K-25 ESFR
- Easy Access to 10, 5, 60, 110, 710 & 101 Freeways

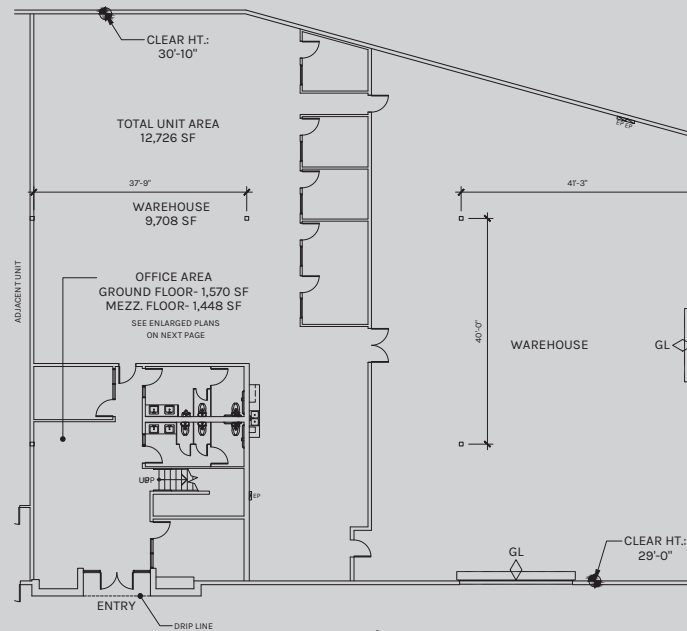


**Rexford
Industrial**

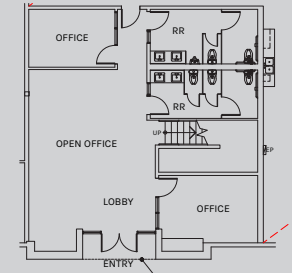
Premier Industrial Business Park

- M3 Zoning
- Lease Type: NNN
- Construction Type: CTU
- Great Office/Design Area
- Three (3) Restrooms - One (1) Located on 2nd Floor Office
- Minutes from Downtown, Vernon, and Arts District
- Can be combined with next-door unit
1509 Rio Vista -11,900 SF*

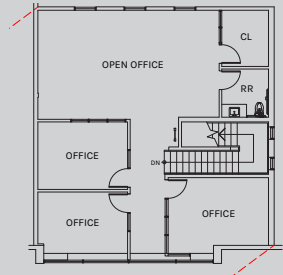
FLOOR PLAN



GROUND FLOOR OFFICE : 1,570 SF



MEZZANINE FLOOR OFFICE : 1,448 SF

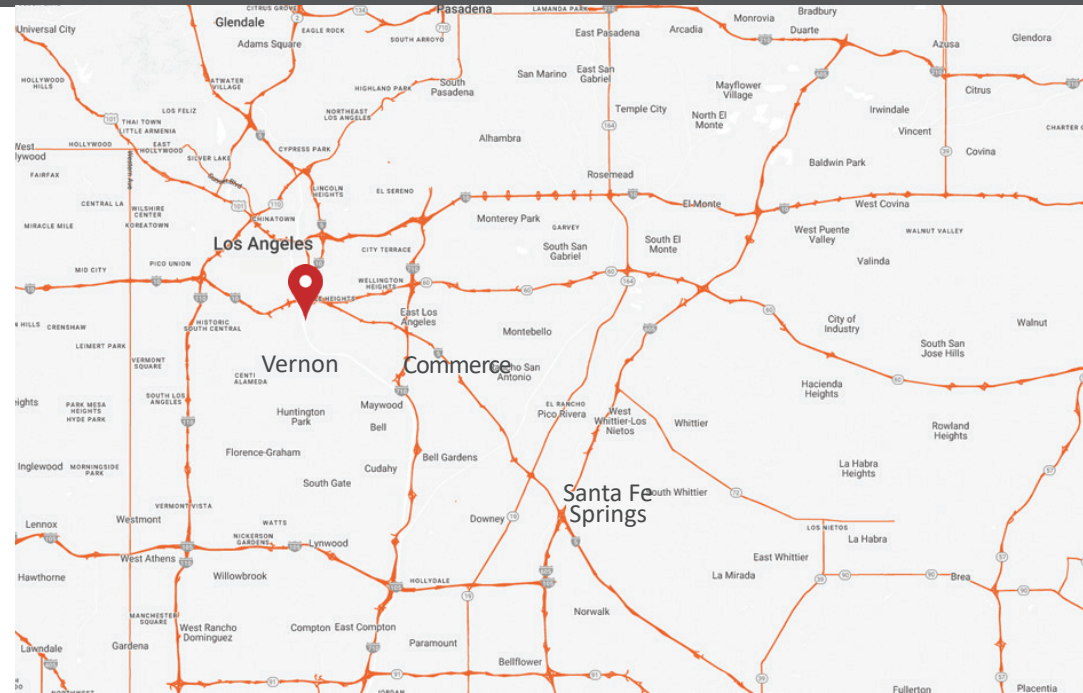
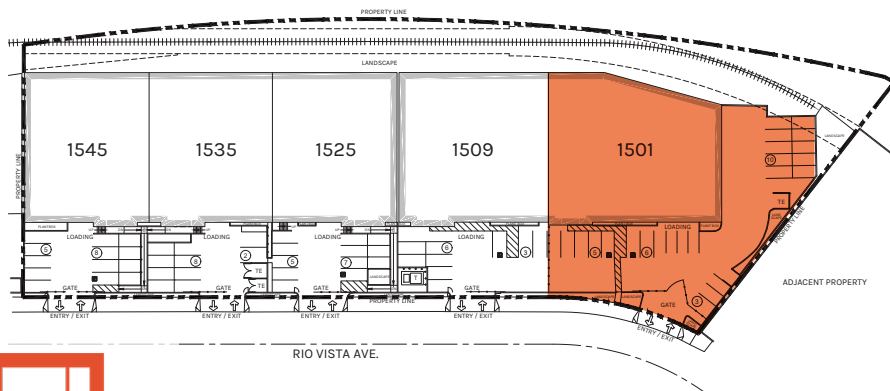


For Lease

1501 RIO VISTA, LOS ANGELES, CALIFORNIA

12,726 SF

LOS ANGELES COUNTY



**Rexford
Industrial**

Photo Page

