

FIRESTONE PL.

AVAILABLE

FIRESTONE BLVD.

RAYO AVE.

# 5116 FIRESTONE PLACE

SOUTH GATE | CA

## TWO (2) 1,000 SF BUILDINGS ON 30,000 SF OF LAND FOR LEASE



**FENCED AND  
SECURED  
PAVED YARD**



**HEAVY  
POWER**



**IMMEDIATE  
ACCESS TO 710,  
105, 110, 605, 5,  
91 FREEWAYS**



**18 MILES  
FROM  
PORTS**

FOR MORE INFORMATION, CONTACT:

**Zach Boebel**

Associate  
213.270.2213  
zboebel@daumcommercial.com  
CA License #02004825

**Michael Chase**

Vice President  
949.341.4513  
mchase@daumcommercial.com  
CA License #02071146

**Krishna Shegran**

Vice President  
949.341.4512  
kshegran@daumcommercial.com  
CA License #02038911

**Anthony Bergeman** 

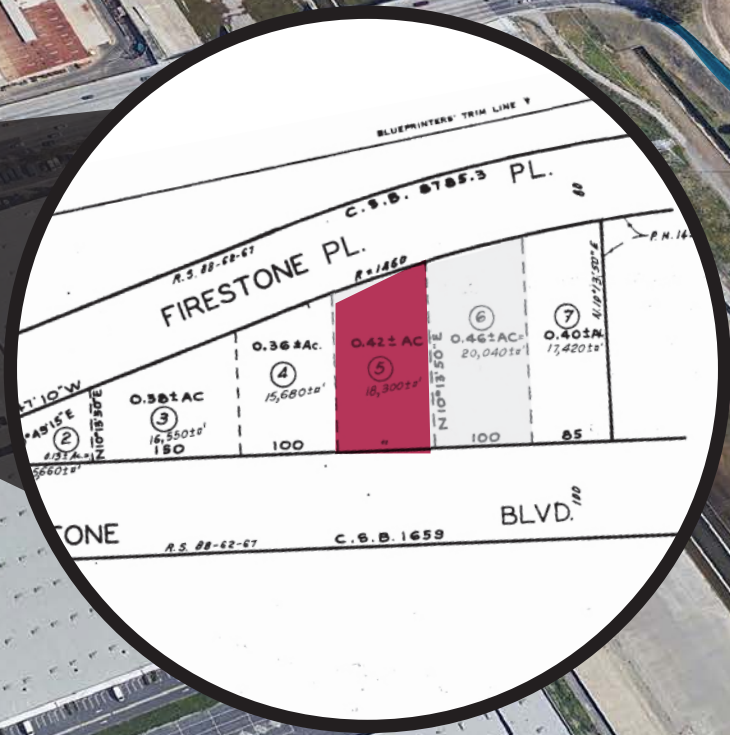
Executive Vice President  
949.341.4511  
abergeman@daumcommercial.com  
CA License #01841828

D/AQ Corp. #01129558. Maps Courtesy ©Google & ©Microsoft. Although all information is furnished regarding for sale, rental or financing is from sources deemed reliable, such information has not been verified and no express representation is made nor is any to be implied as to the accuracy thereof, and it is submitted subject to errors, omissions, changes of price, rental or other conditions, prior sale, lease or financing, or withdrawal without notice.

[www.daumcommercial.com](http://www.daumcommercial.com)



FIRESTONE PL.  
AVAILABLE  
FIRESTONE BLVD.  
RAYO AVE.



Google

**5116**  
**FIRESTONE PL.**  
SOUTH GATE | CA

**PROPERTY FEATURES**

- Immediate Access to 710, 105, 110, 605, 5, 91 Freeways
- 18 Miles to Ports of Long Beach and Los Angeles
- 17 Miles to LAX
- Fenced and Secured Paved Yard
- Heavy Power



# FOR LEASE

## TWO (2) 1,000 SF BUILDINGS ON 30,000 SF OF LAND



**5116**  
**FIRESTONE PL.**  
SOUTH GATE | CA

FOR MORE INFORMATION, CONTACT:

**Zach Boebel**

Associate

213.270.2213

[zboebel@daumcommercial.com](mailto:zboebel@daumcommercial.com)

CA License #02004825

**Michael Chase**

Vice President

949.341.4513

[mchase@daumcommercial.com](mailto:mchase@daumcommercial.com)

CA License #02071146

**Krishna Shegran**

Vice President

949.341.4512

[kshegran@daumcommercial.com](mailto:kshegran@daumcommercial.com)

CA License #02038911

**Anthony Bergeman** 

Executive Vice President

949.341.4511

[abergeman@daumcommercial.com](mailto:abergeman@daumcommercial.com)

CA License #01841828

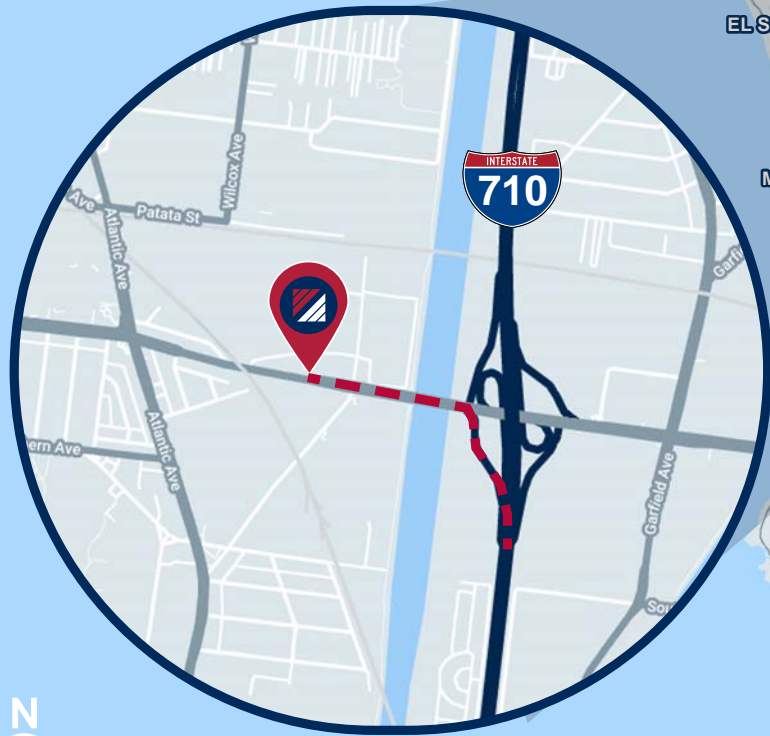
D/AQ Corp. #01129558. Maps Courtesy ©Google & ©Microsoft. Although all information is furnished regarding for sale, rental or financing is from sources deemed reliable, such information has not been verified and no express representation is made nor is any to be implied as to the accuracy thereof, and it is submitted subject to errors, omissions, changes of price, rental or other conditions, prior sale, lease or financing, or withdrawal without notice.

**DAUM**  
COMMERCIAL REAL ESTATE SERVICES



# FOR LEASE

TWO (2) 1,000 SF BUILDINGS  
ON 30,000 SF OF LAND



Google

LOCATION MAP

**5116**  
**FIRESTONE PL.**  
**SOUTH GATE | CA**

#### FOR MORE INFORMATION, CONTACT:

**Zach Boebel**

Associate

213.270.2213

[zboebel@daumcommercial.com](mailto:zboebel@daumcommercial.com)

CA License #02004825

**Michael Chase**

Vice President

949.341.4513

[mchase@daumcommercial.com](mailto:mchase@daumcommercial.com)

CA License #02071146

**Krishna Shegran**

Vice President

949.341.4512

[kshegran@daumcommercial.com](mailto:kshegran@daumcommercial.com)

CA License #02038911

**Anthony Bergeman**  **Sior**

Executive Vice President

949.341.4511

[abergeman@daumcommercial.com](mailto:abergeman@daumcommercial.com)

CA License #01841828

DAUM Corp. #01129558. Maps Courtesy ©Google & ©Microsoft. Although all information is furnished regarding for sale, rental or financing is from sources deemed reliable, such information has not been verified and no express representation is made nor is any to be implied as to the accuracy thereof, and it is submitted subject to errors, omissions, changes of price, rental or other conditions, prior sale, lease or financing, or withdrawal without notice.

**DAUM**  
COMMERCIAL REAL ESTATE SERVICES