

Industrial | For Lease

# 3221 E. 59TH STREET

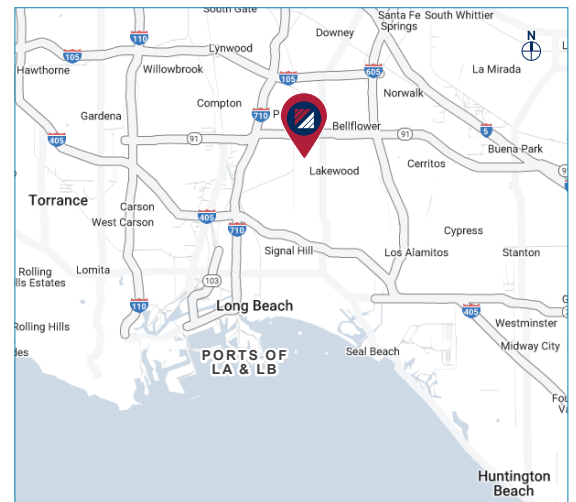
LONG BEACH | 90805

**38,233 SF BUILDING FOR LEASE**



## PROPERTY HIGHLIGHTS

- 38,233 SF Building on 65,340 SF of Land
- 10,400 SF Offices
- (3) Dock High Positions & (5) GL Doors
- 22' Minimum Clearance
- 800 Amps, 277/480 Volts, 3 Phase
- Zoning: Light Industrial
- 10,400 SF Warehouse Mezzanine
- Quick Access to (91), (405), (605), & (710) Freeways
- Close Proximity to L.A. & L.B. Ports
- Large Fenced Yard
- Asking Rate: \$1.51/SF NNN
- Opexs: \$0.32/SF



## CONTACT US

**DUSTIN HULLINGER**  
ASSOCIATE VICE PRESIDENT  
P: 949.341.4514  
DHULLINGER@DAUMCRE.COM  
CADRE #02078021

**CHUCK BRILL**  
EXECUTIVE VICE PRESIDENT  
P: 310.538.6710  
CBRILL@DAUMCRE.COM  
CADRE #00974881

**ALLEN DE LEON**  
SALES INTERN  
P: 310.538.6713  
ADELEON@DAUMCRE.COM  
CADRE #02130539

**DARION TAHMASEBI**  
SALES INTERN  
P: 310.538.6714  
DTAHMASEBI@DAUMCRE.COM  
CADRE #02141972

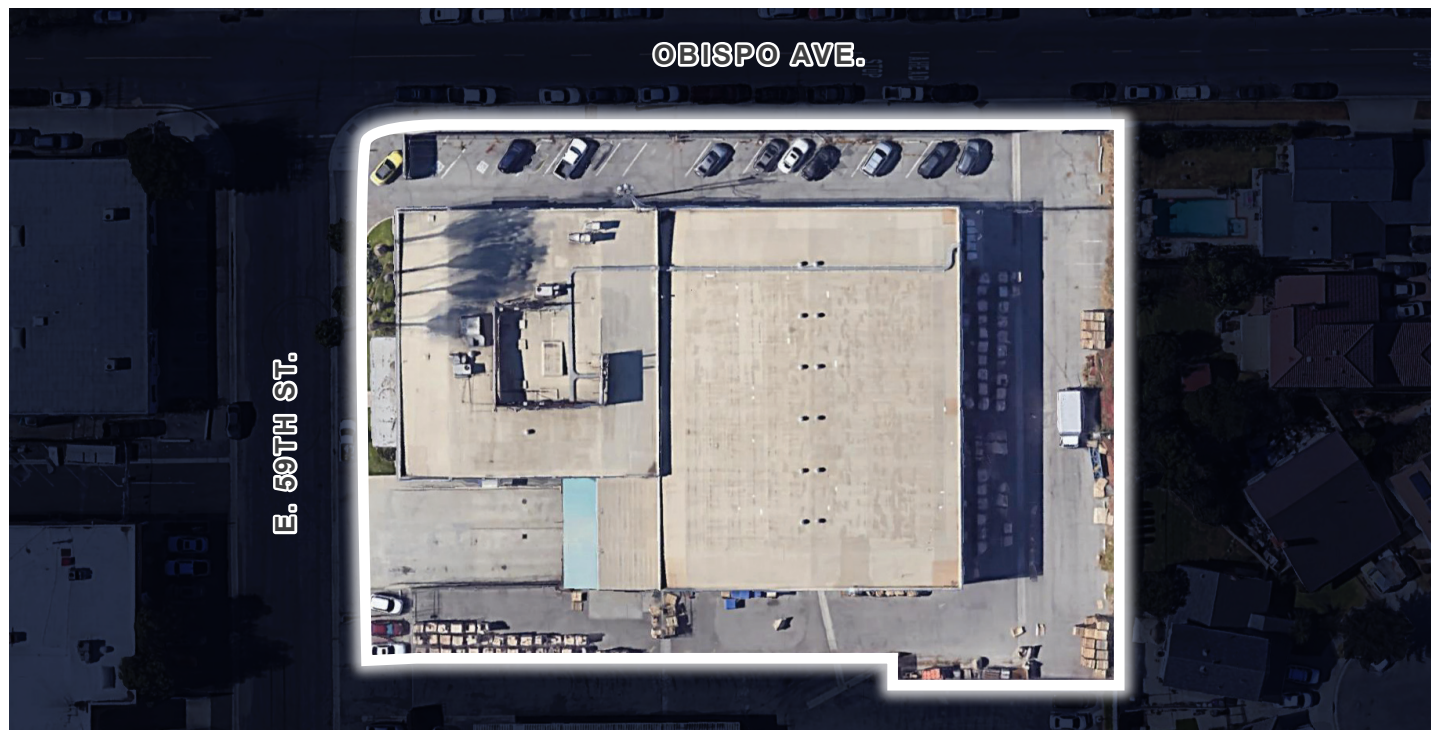
DI/AQ Corp. #01129558. Maps Courtesy ©Google & ©Microsoft. Although all information is furnished regarding for sale, rental or financing is from sources deemed reliable, such information has not been verified and no express representation is made nor is any to be implied as to the accuracy thereof, and it is submitted subject to errors, omissions, changes of price, rental or other conditions, prior sale, lease or financing, or withdrawal without notice.

Industrial | For Lease

Industrial | For Lease

# 3221 E. 59TH STREET

LONG BEACH | 90805



## CONTACT US

**DUSTIN HULLINGER**  
ASSOCIATE VICE PRESIDENT  
P: 949.341.4514  
DHULLINGER@DAUMCRE.COM  
CADRE #02078021

**CHUCK BRILL**  
EXECUTIVE VICE PRESIDENT  
P: 310.538.6710  
CBRILL@DAUMCRE.COM  
CADRE #00974881

**ALLEN DE LEON**  
SALES INTERN  
P: 310.538.6713  
ADELEON@DAUMCRE.COM  
CADRE #02130539

**DARION TAHMASEBI**  
SALES INTERN  
P: 310.538.6714  
DTAHMASEBI@DAUMCRE.COM  
CADRE #02141972

DI/AQ Corp. #01129558. Maps Courtesy ©Google & ©Microsoft. Although all information is furnished regarding for sale, rental or financing is from sources deemed reliable, such information has not been verified and no express representation is made nor is any to be implied as to the accuracy thereof, and it is submitted subject to errors, omissions, changes of price, rental or other conditions, prior sale, lease or financing, or withdrawal without notice.

Industrial | For Lease

