

6260 MANGO AVE. FONTANA | CA

DAUM
COMMERCIAL REAL ESTATE SERVICES



PROPERTY HIGHLIGHTS



113,930 SF
FREESTANDING CLASS A
DISTRIBUTION BUILDING



32'
CLEAR HEIGHT



19
DOCK DOORS



TBD AMPS – EXPANDABLE

CONTACTS

For More Information, Contact:

NOAH SAMARIN
EXECUTIVE VICE PRESIDENT
P: 909.912.0007
nsamarin@daumcre.com
CA License #01755814

DAVID GORES
VICE PRESIDENT
P: 909.652.9059
dgores@daumcre.com
CA License #01502471

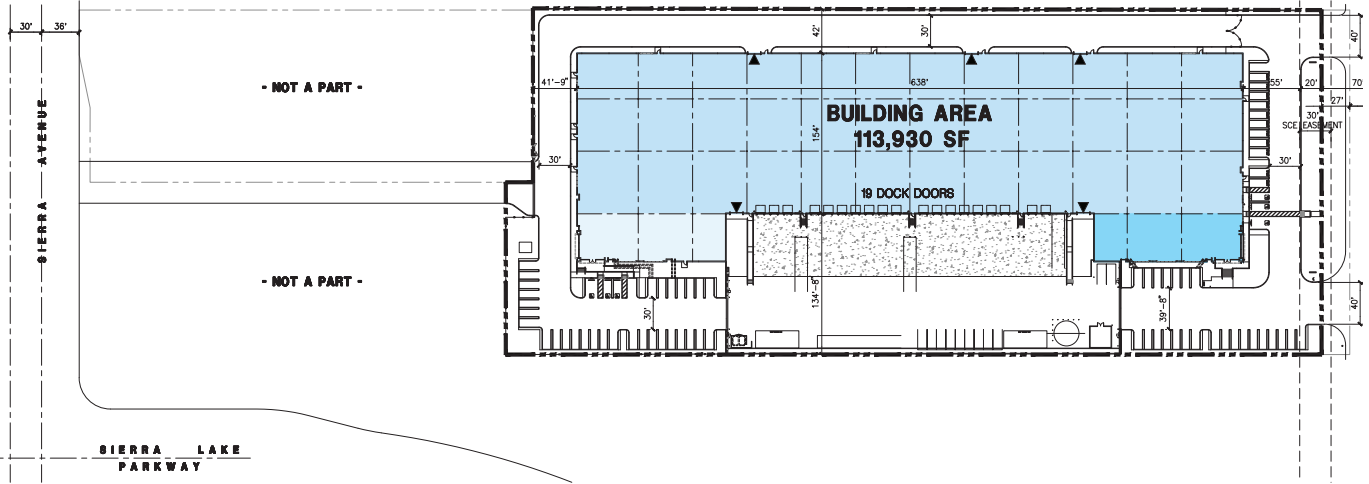
GARY WOMACK
VICE PRESIDENT
P: 909.652.9041
gwomack@daumcre.com
CA License #00795648

FOR LEASE

6260 MANGO AVE.

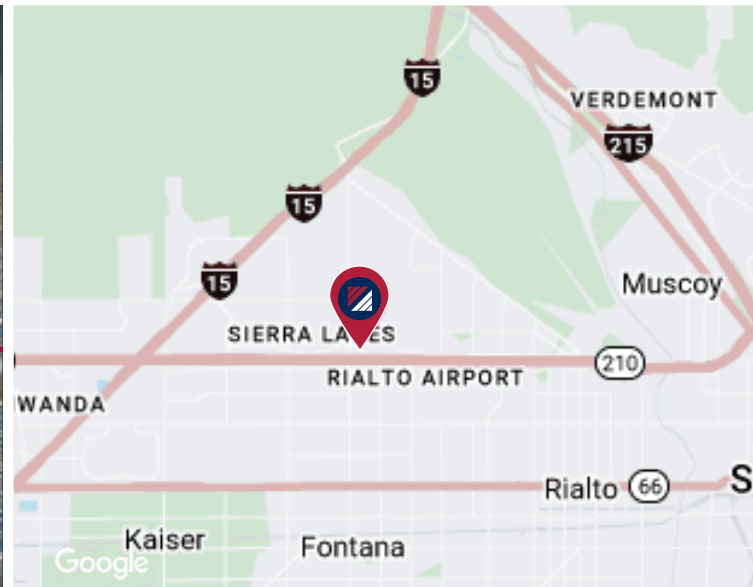
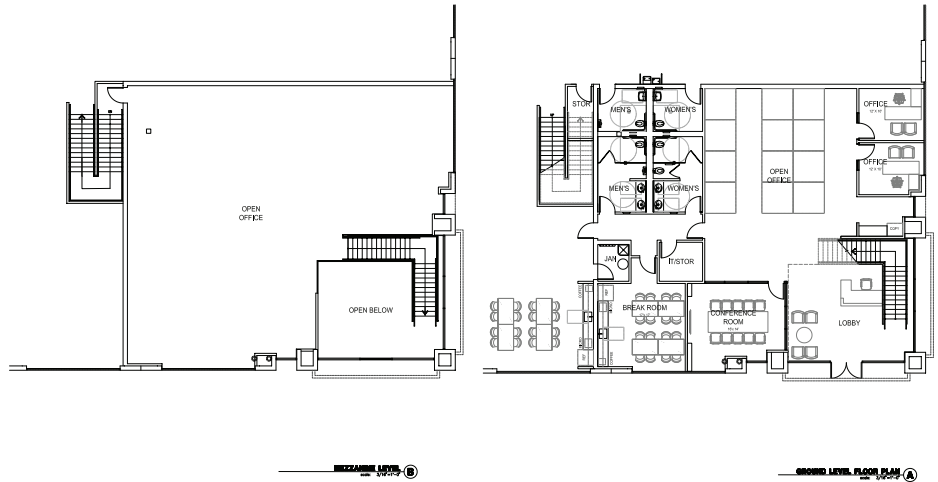
FONTANA | CA

FOR LEASE



CONCEPTUAL FLOOR PLAN
 GROUND LEVEL = 3,332 SF
 MEZZANINE = 2,830 SF

6,162 SF TOTAL



6260 MANGO AVE. FONTANA | CA

FOR LEASE

