



1957

EAST DEL AMO BLVD.

RANCHO DOMINGUEZ | CA

AVAILABLE | RARE LOW COVERAGE SITE



± 9,484 SF
FREESTANDING
BUILDING



± 60,104 SF
LOT SIZE

FOR MORE INFORMATION, CONTACT:

Brad Levin
Executive Vice President | Principal
310.538.6728
blevin@daumcommercial.com
CA License #01020885

Anthony Bergeman 
Executive Vice President | Principal
949.341.4511
abergeman@daumcommercial.com
CA License #01841828

Krishna Shegran
Associate
949.341.4512
kshegran@daumcommercial.com
CA License #0203891

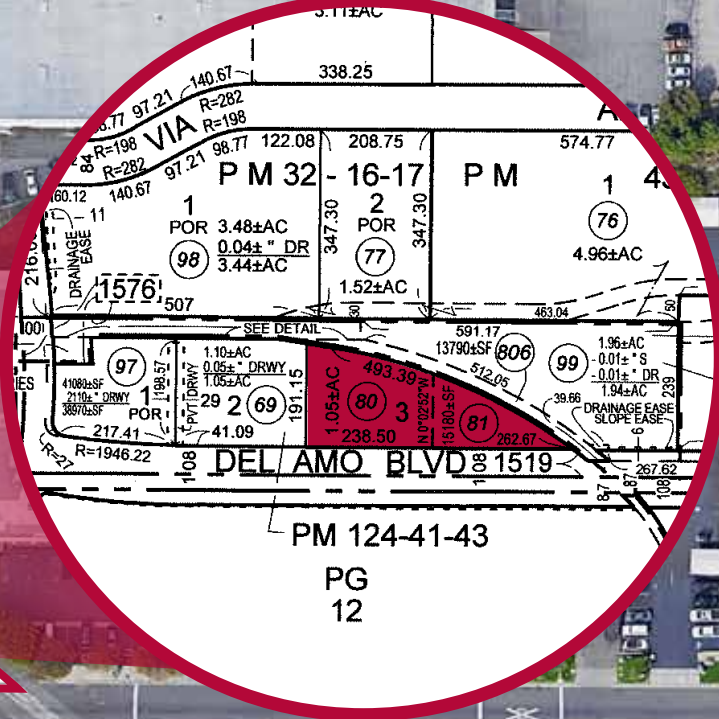
Michael Chase
Associate
949.341.4513
mchase@daumcommercial.com
CA License #0207114

D/AQ Corp. #01129558. Maps Courtesy ©Google & ©Microsoft. Although all information is furnished regarding for sale, rental or financing is from sources deemed reliable, such information has not been verified and no express representation is made nor is any to be implied as to the accuracy thereof, and it is submitted subject to errors, omissions, changes of price, rental or other conditions, prior sale, lease or financing, or withdrawal without notice.

1957

EAST DEL AMO BLVD.

RANCHO DOMINGUEZ | CA



E. DEL AMO BLVD.

AVAILABLE | RARE LOW COVERAGE SITE

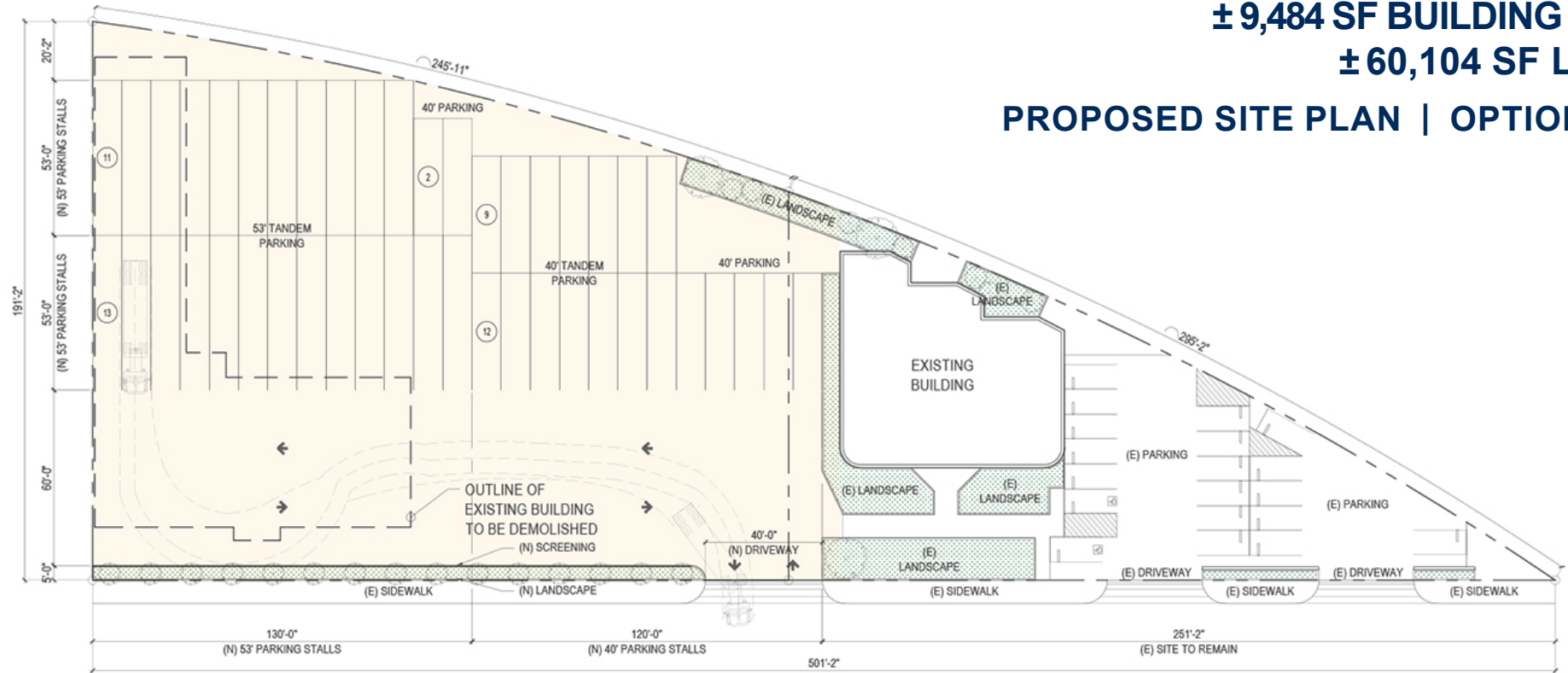
PROPERTY FEATURES

- ± 60,104 SF Lot Size
- Rare Low Coverage Site
- Prime Unincorporated Los Angeles County Location – M2 Zoning
- High Image Elevator Served Refurbished Building with Extra Land
- Del Amo Frontage/Signage
- Sprinklered Building
- 405, 710, 91 Freeways Proximity & Alameda Corridor Adjacent
- 8 Miles From Ports
- Secured Fenced Storage Yard w/ Lights
- Partial Concrete paved w/ asphalt

AVAILABLE

± 9,484 SF BUILDING ON
± 60,104 SF LOT

PROPOSED SITE PLAN | OPTION 1



TRUCK PARKING STALLS

53' CONTAINER PARKING SPACE	=	24 STALLS
40' CONTAINER PARKING SPACE	=	23 STALLS
TOTAL CONTAINER PARKING SPACE	=	47 STALLS

1957
EAST DEL AMO BLVD.
RANCHO DOMINGUEZ | CA

FOR MORE INFORMATION, CONTACT:

Brad Levin
Executive Vice President | Principal
310.538.6728
blevin@daumcommercial.com
CA License #01020885

Anthony Bergeman SIOR
Executive Vice President | Principal
949.341.4511
abergeman@daumcommercial.com
CA License #01841828

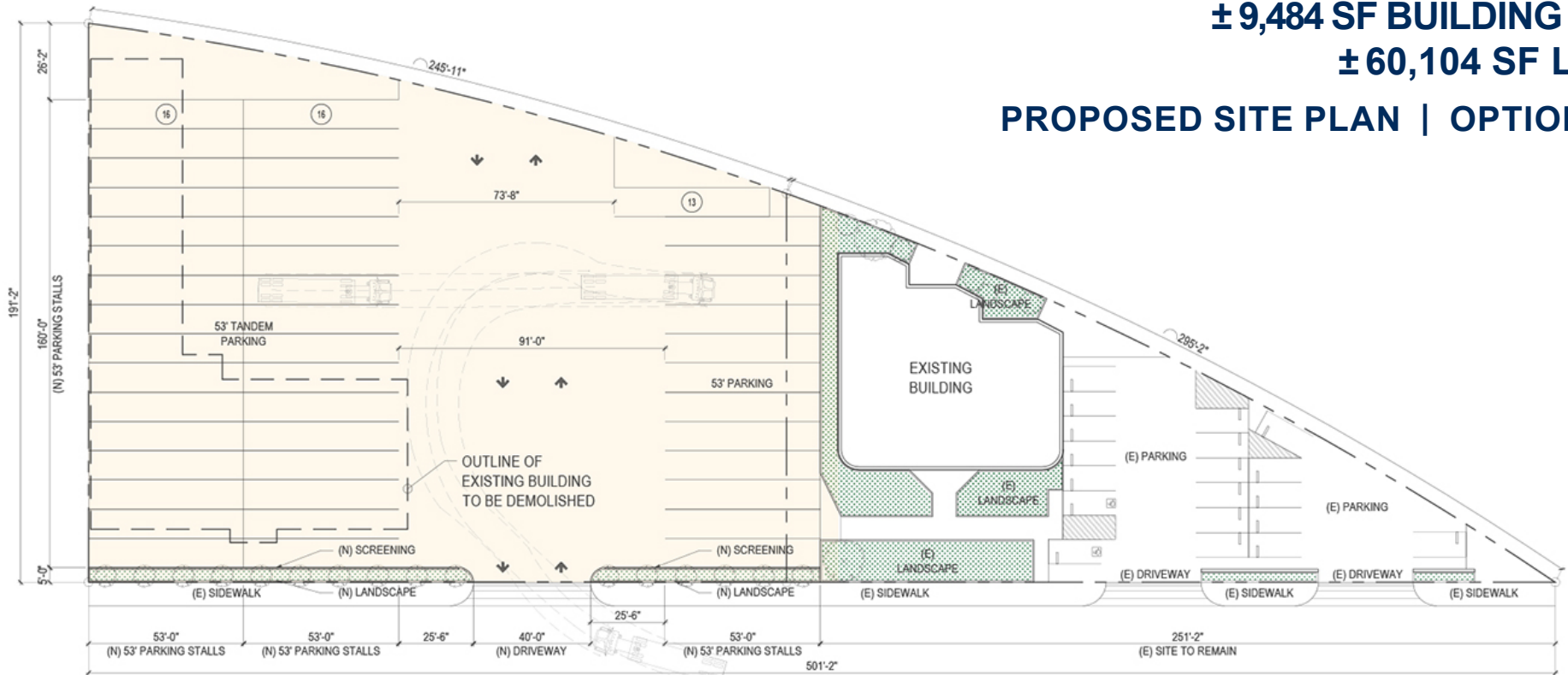
Krishna Shegran
Associate
949.341.4512
kshegran@daumcommercial.com
CA License #0203891

Michael Chase
Associate
949.341.4513
mchase@daumcommercial.com
CA License #0207114

AVAILABLE

± 9,484 SF BUILDING ON
± 60,104 SF LOT

PROPOSED SITE PLAN | OPTION 2



TRUCK PARKING STALLS
53' CONTAINER PARKING SPACE = 45 STALLS

1957
EAST DEL AMO BLVD.
RANCHO DOMINGUEZ | CA

FOR MORE INFORMATION, CONTACT:

Brad Levin
Executive Vice President | Principal
310.538.6728
blevin@daumcommercial.com
CA License #01020885

Anthony Bergeman SIOR
Executive Vice President | Principal
949.341.4511
abergeman@daumcommercial.com
CA License #01841828

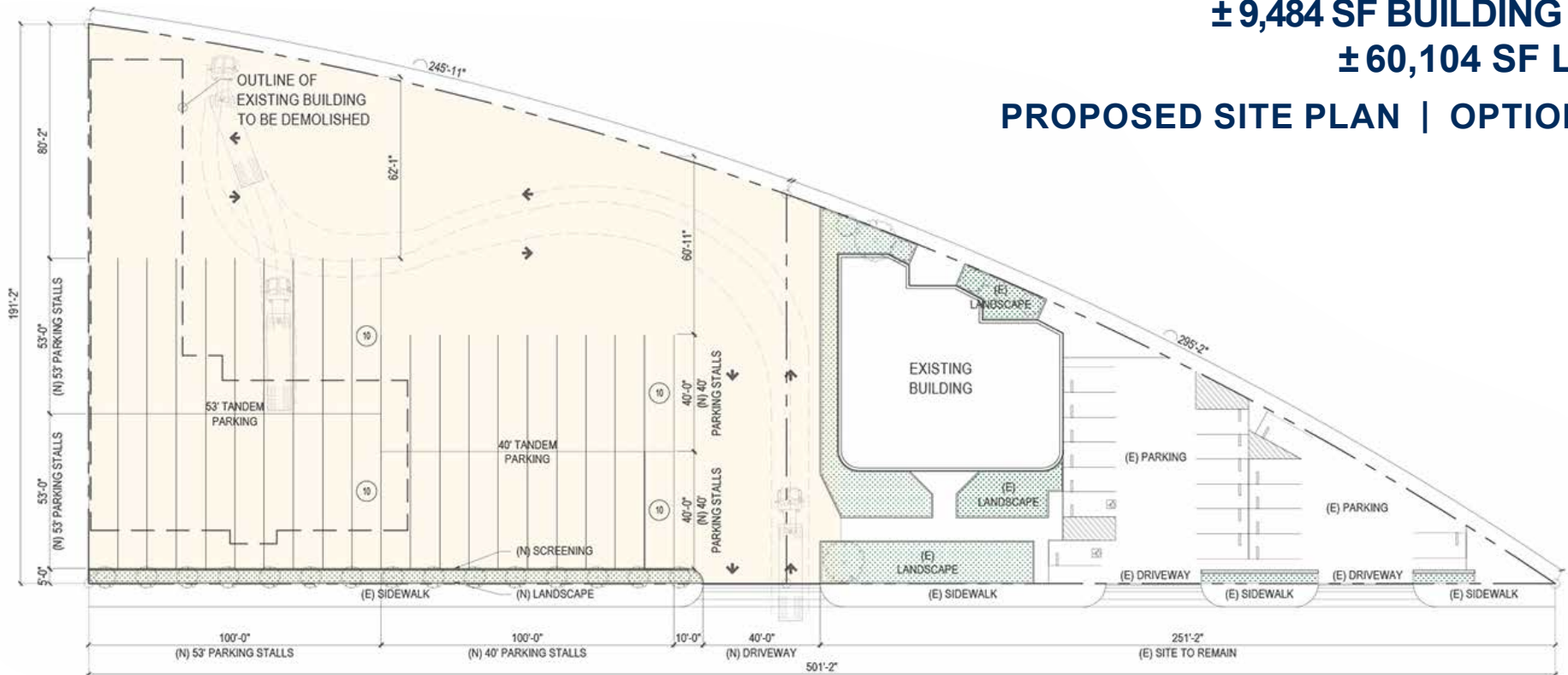
Krishna Shegran
Associate
949.341.4512
kshegran@daumcommercial.com
CA License #0203891

Michael Chase
Associate
949.341.4513
mchase@daumcommercial.com
CA License #0207114

AVAILABLE

± 9,484 SF BUILDING ON
± 60,104 SF LOT

PROPOSED SITE PLAN | OPTION 3



TRUCK PARKING STALLS

53' CONTAINER PARKING SPACE	=	20 STALLS
40' CONTAINER PARKING SPACE	=	20 STALLS
TOTAL CONTAINER PARKING SPACE	=	40 STALLS

1957
EAST DEL AMO BLVD.
RANCHO DOMINGUEZ | CA

FOR MORE INFORMATION, CONTACT:

Brad Levin
Executive Vice President | Principal
310.538.6728
blevin@daumcommercial.com
CA License #01020885

Anthony Bergeman SIOR
Executive Vice President | Principal
949.341.4511
abergeman@daumcommercial.com
CA License #01841828

Krishna Shegran
Associate
949.341.4512
kshegran@daumcommercial.com
CA License #0203891

Michael Chase
Associate
949.341.4513
mchase@daumcommercial.com
CA License #0207114

AVAILABLE

± 9,484 SF BUILDING ON

± 60,104 SF LOT

PROPERTY PHOTOS



1957
EAST DEL AMO BLVD.
RANCHO DOMINGUEZ | CA

FOR MORE INFORMATION, CONTACT:

Brad Levin
Executive Vice President | Principal
310.538.6728
blevin@daumcommercial.com
CA License #01020885

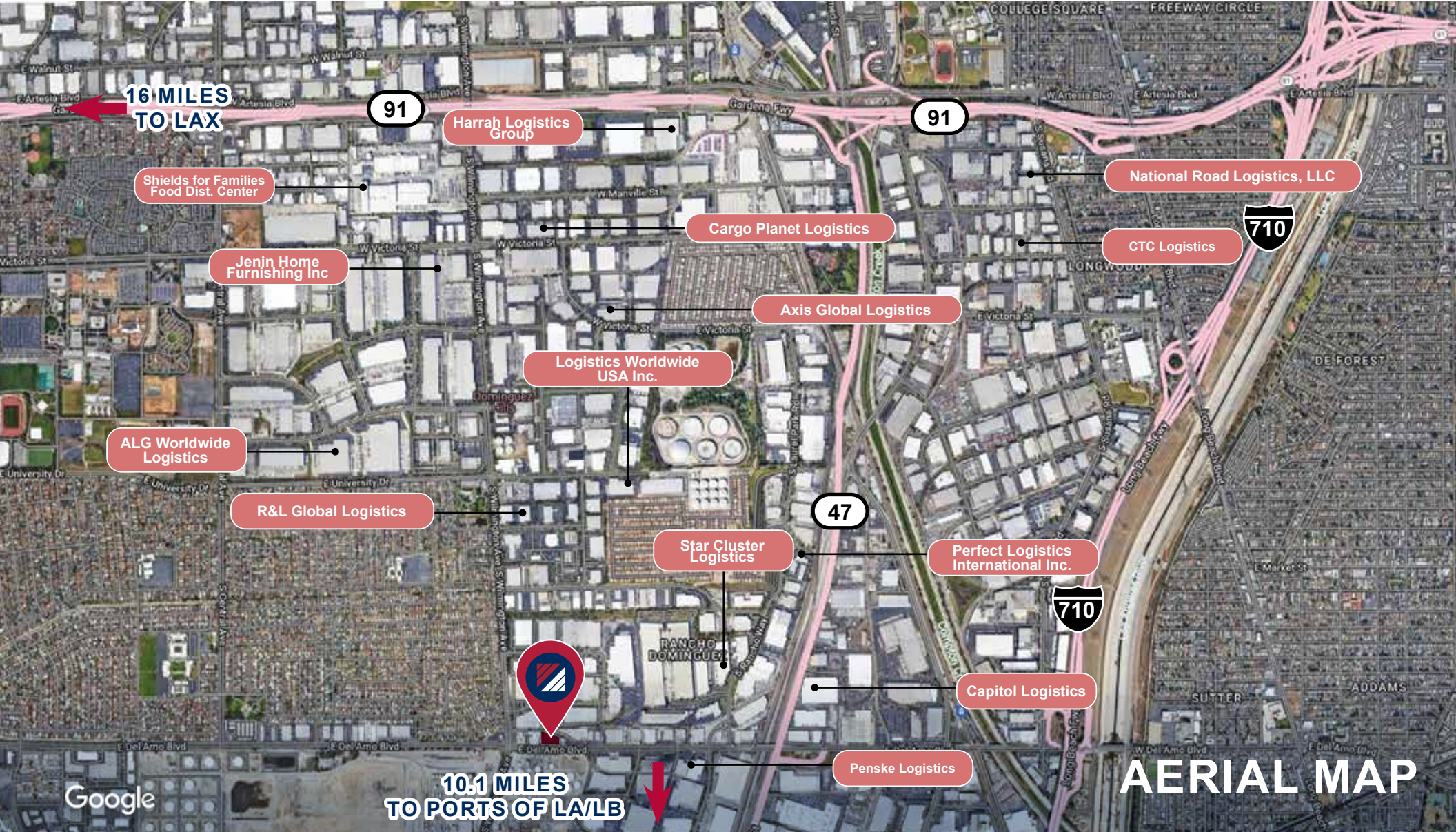
Anthony Bergeman SIOR
Executive Vice President | Principal
949.341.4511
abergeman@daumcommercial.com
CA License #01841828

Krishna Shegran
Associate
949.341.4512
kshegran@daumcommercial.com
CA License #0203891

Michael Chase
Associate
949.341.4513
mchase@daumcommercial.com
CA License #0207114

D/AQ Corp. #01129558. Maps Courtesy ©Google & ©Microsoft. Although all information is furnished regarding sale, rental or financing is from sources deemed reliable, such information has not been verified and no express representation is made nor is any to be implied as to the accuracy thereof, and it is submitted subject to errors, omissions, changes of price, rental or other conditions, prior sale, lease or financing, or withdrawal without notice.

DAUM
COMMERCIAL REAL ESTATE SERVICES



16 MILES
TO LAX

91

Harrah Logistics Group

Shields for Families Food Dist. Center

Jenin Home Furnishing Inc

ALG Worldwide Logistics

R&L Global Logistics

Logistics Worldwide USA Inc.

Star Cluster Logistics



10.1 MILES
TO PORTS OF LA/LB



91

Cargo Planet Logistics

Axis Global Logistics

47

Perfect Logistics International Inc.

Capitol Logistics

Penske Logistics

National Road Logistics, LLC

CTC Logistics

710

AERIAL MAP

1957
EAST DEL AMO BLVD.
RANCHO DOMINGUEZ | CA

FOR MORE INFORMATION, CONTACT:

Brad Levin
Executive Vice President | Principal
310.538.6728
blevin@daumcommercial.com
CA License #01020885

Anthony Bergeman 
Executive Vice President | Principal
949.341.4511
abergeman@daumcommercial.com
CA License #01841828

Krishna Shegran
Associate
949.341.4512
kshegran@daumcommercial.com
CA License #0203891

Michael Chase
Associate
949.341.4513
mchase@daumcommercial.com
CA License #0207114

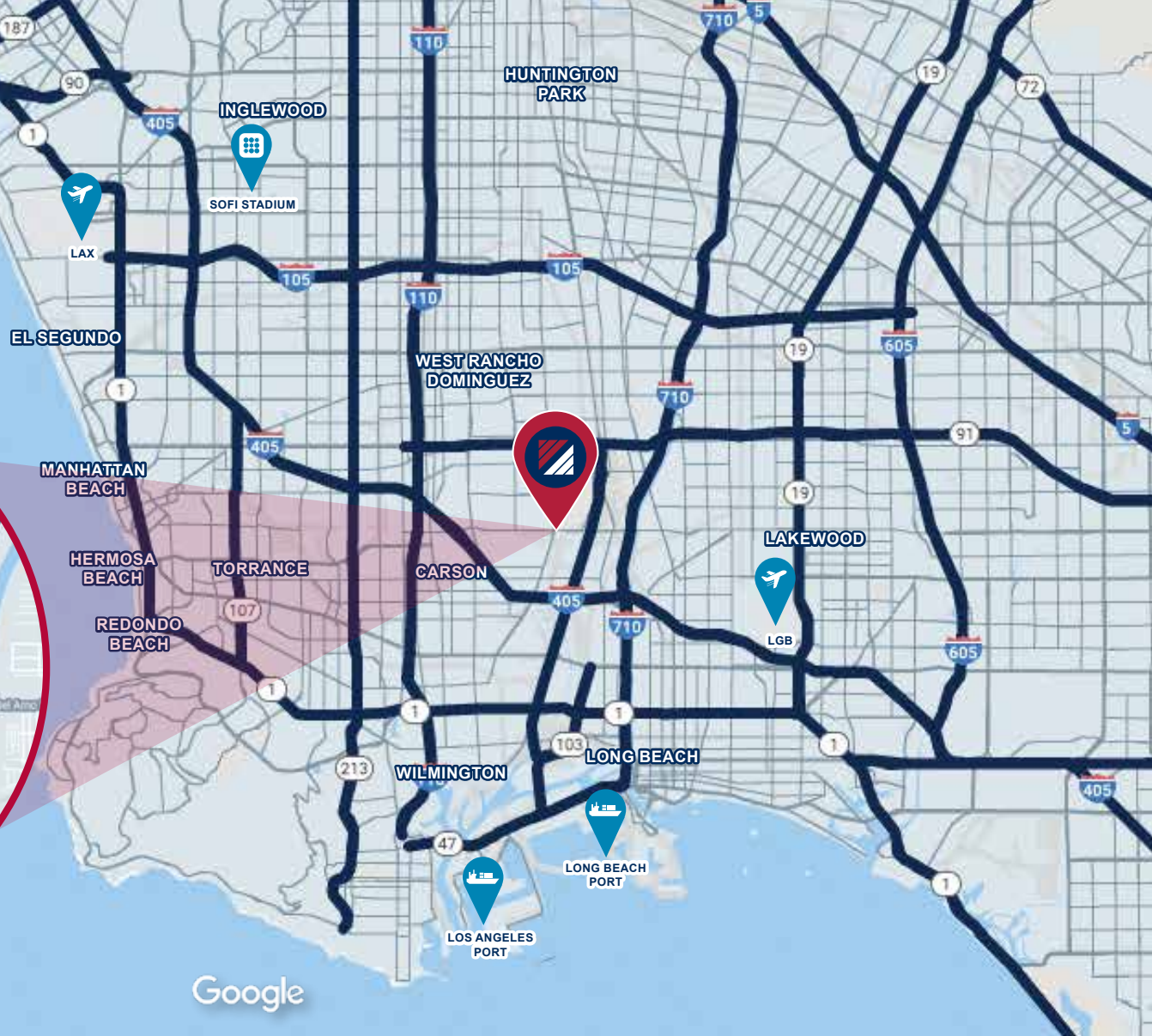


AVAILABLE

±9,484 SF BUILDING ON

± 60,104 SF LOT

LOCATION MAP



1957
EAST DEL AMO BLVD.
RANCHO DOMINGUEZ | CA

FOR MORE INFORMATION, CONTACT:

Brad Levin

Executive Vice President | Principal

310.538.6728

blevin@daumcommercial.com

CA License #01020885

Anthony Bergeman SIOR

Executive Vice President | Principal

949.341.4511

abergeman@daumcommercial.com

CA License #01841828

Krishna Shegran

Associate

949.341.4512

kshegran@daumcommercial.com

CA License #0203891

Michael Chase

Associate

949.341.4513

mchase@daumcommercial.com

CA License #0207114