

6260 MANGO AVE. FONTANA | CA

DAUM
COMMERCIAL REAL ESTATE SERVICES



FOR LEASE

113,930 SF FREESTANDING CLASS A DISTRIBUTION BUILDING

For More Information, Contact:

NOAH SAMARIN
EXECUTIVE VICE PRESIDENT
P: 909.912.0007
nsamarin@daumcre.com
CA License #01755814

GARY WOMACK
VICE PRESIDENT
P: 909.652.9041
gwomack@daumcre.com
CA License #00795648

DAVID GORES
VICE PRESIDENT
P: 909.652.9059
dgores@daumcre.com
CA License #01502471

FONTANA | CA

6260
MANGO AVE.
FONTANA | CA

PROPERTY HIGHLIGHTS

113,930 SF

FREESTANDING CLASS A
DISTRIBUTION BUILDING

32'
CLEAR HEIGHT

19
DOCK DOORS

TBD AMPS –
EXPANDABLE
POWER

D/AQ Corp. #01129558. Maps Courtesy ©Google & ©Microsoft. Although all information is furnished regarding for sale, rental or financing is from sources deemed reliable, such information has not been verified and no express representation is made nor is any to be implied as to the accuracy thereof, and it is submitted subject to errors, omissions, changes of price, rental or other conditions, prior sale, lease or financing, or withdrawal without notice.

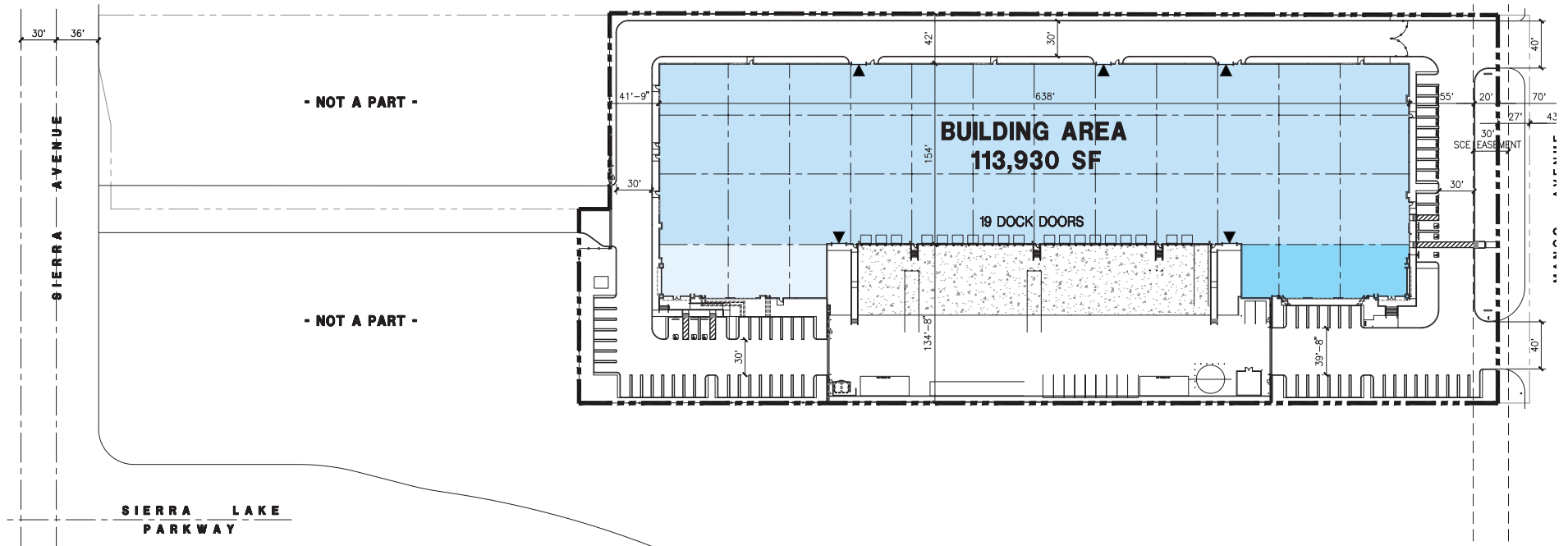
DAUM
COMMERCIAL REAL ESTATE SERVICES

FOR LEASE

113,930 SF FREESTANDING CLASS A
DISTRIBUTION BUILDING

6260 MANGO AVE. FONTANA | CA

SITE PLAN



For More Information, Contact:

NOAH SAMARIN
EXECUTIVE VICE PRESIDENT
P: 909.912.0007
nsamarin@daumcre.com
CA License #01755814

GARY WOMACK
VICE PRESIDENT
P: 909.652.9041
gwomack@daumcre.com
CA License #00795648

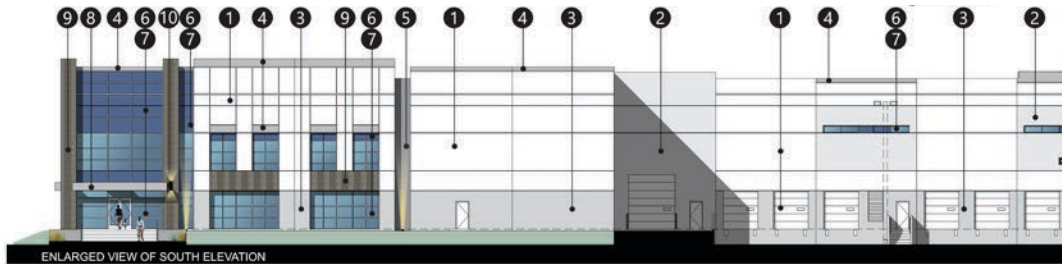
DAVID GORES
VICE PRESIDENT
P: 909.652.9059
dgores@daumcre.com
CA License #01502471



FONTANA | CA

6260
MANGO AVE.
FONTANA | CA

ELEVATIONS



- | | | | | |
|---|--|---|---|---|
| 1 | 2 | 3 | 4 | 5 |
| | | | | |
| Sherwin Williams
SW 7005
Pure White | Sherwin Williams
SW 7071
Gray Screen | Sherwin Williams
SW 7072
Online | Sherwin Williams
SW 7073
Network Gray | Sherwin Williams
SW 7074
Software |
| 6 | 7 | 8 | 9 | 10 |
| | | | | |
| Clear Anodized
MULLIONS | Blue Reflective
GLAZING | Sherwin Williams
Acrylic Latex Systems
High Gloss/High performance
In color: SW 7073 Network Gray
@Metal CANOPY | Exterior Facade Accent Tile
in Arizona Tile
LAGOS - Mud
24"x48"x16mm | Wall Pack
Light Fixture |



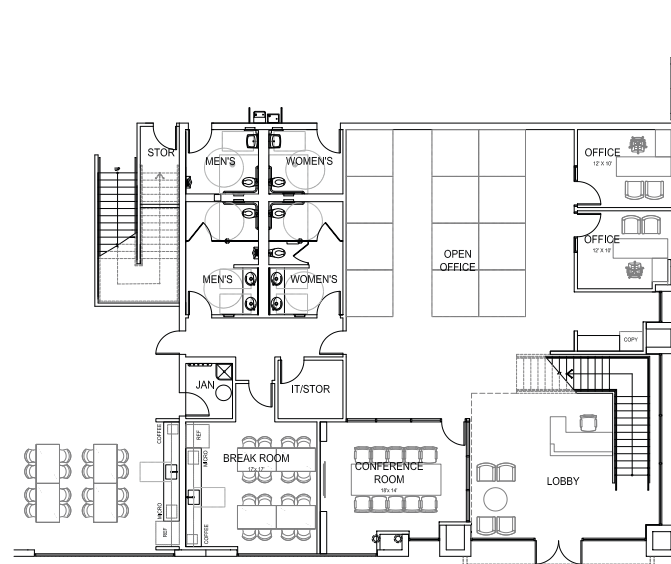
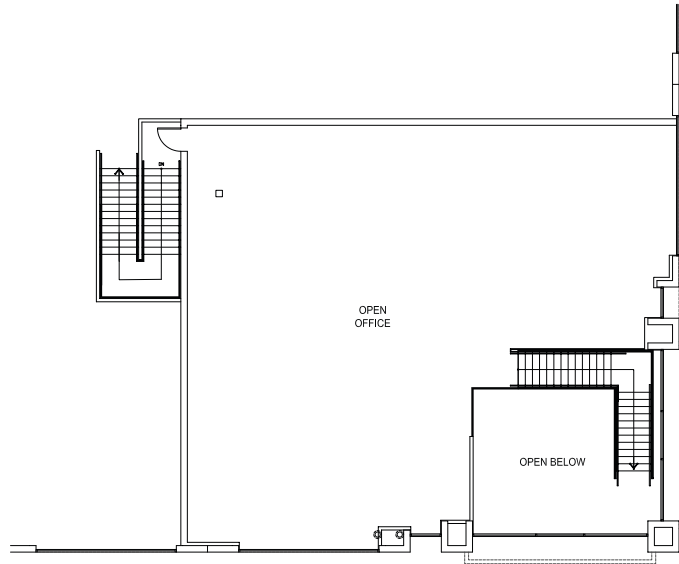
D/AQ Corp. #01129558. Maps Courtesy ©Google & ©Microsoft. Although all information is furnished regarding for sale, rental or financing is from sources deemed reliable, such information has not been verified and no express representation is made nor is any to be implied as to the accuracy thereof, and it is submitted subject to errors, omissions, changes of price, rental or other conditions, prior sale, lease or financing, or withdrawal without notice.

DAUM
COMMERCIAL REAL ESTATE SERVICES

FOR LEASE

113,930 SF FREESTANDING CLASS A
DISTRIBUTION BUILDING

6260 MANGO AVE. FONTANA | CA



CONCEPTUAL FLOOR PLAN

GROUND LEVEL = 3,332 SF
MEZZANINE = 2,830 SF

6,162 SF TOTAL

For More Information, Contact:

NOAH SAMARIN
EXECUTIVE VICE PRESIDENT
P: 909.912.0007
nsamarin@daumcre.com
CA License #01755814

GARY WOMACK
VICE PRESIDENT
P: 909.652.9041
gwomack@daumcre.com
CA License #00795648

DAVID GORES
VICE PRESIDENT
P: 909.652.9059
dgores@daumcre.com
CA License #01502471



CORPORATE NEIGHBORS / AMENITIES

6260 MANGO AVE.

FONTANA | CA



← W. TOWARDS LOS ANGELES

E. TOWARDS SAN BERNARDINO →

↓ S. TOWARDS RIVERSIDE

6260 MANGO AVE.
FONTANA | CA



W. BASELINE RD.

SIERRA AVE.

SIERRA AVE.

MANGO AVE.

SUMMIT AVE.

SUMMIT AVE.

W. CASA GRANDE AVE.

N. RIVERSIDE AVE.

N. RIVERSIDE AVE.

LINDEN AVE.

AVILA DR.

CASMALIA ST.

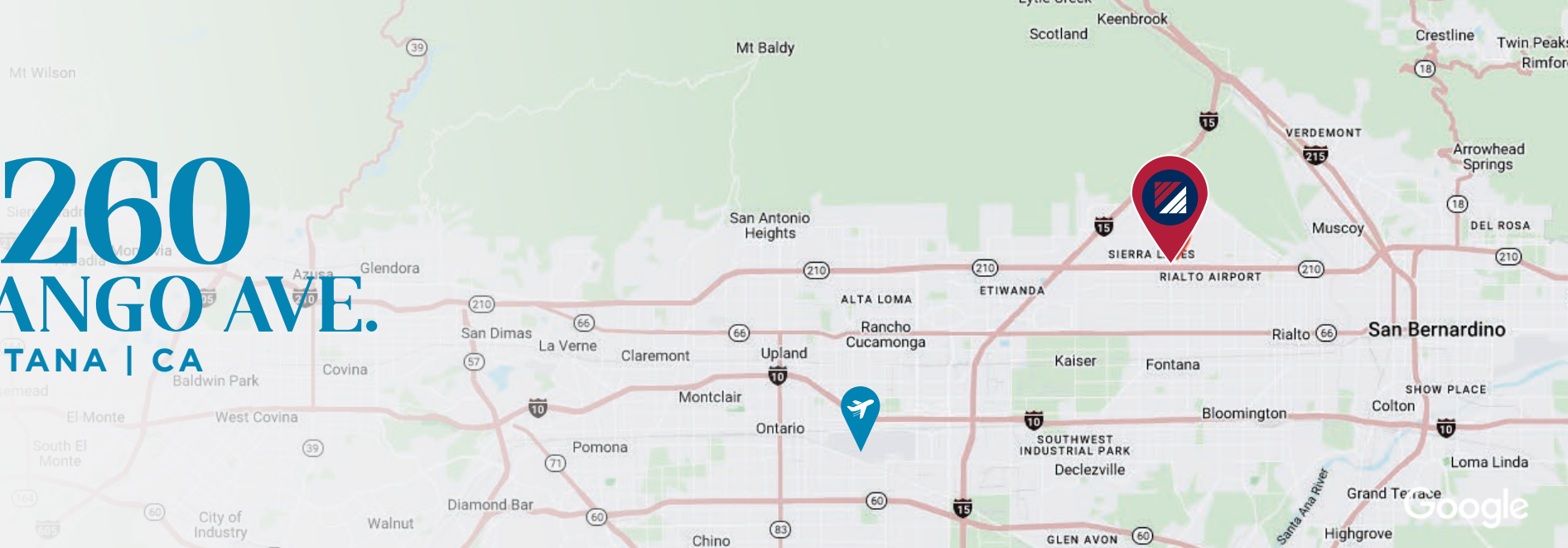
N. ALDER AVE.

N. LOCUST AVE.

N. LINDEN AVE.

N. CACTUS AVE.

6260 MANGO AVE. FONTANA | CA



LOCATION HIGHLIGHTS

COMMUTER RAIL DRIVE DISTANCE

Fontana Commuter Rail
(San Bernardino Line)

7 min | 3.5 mi

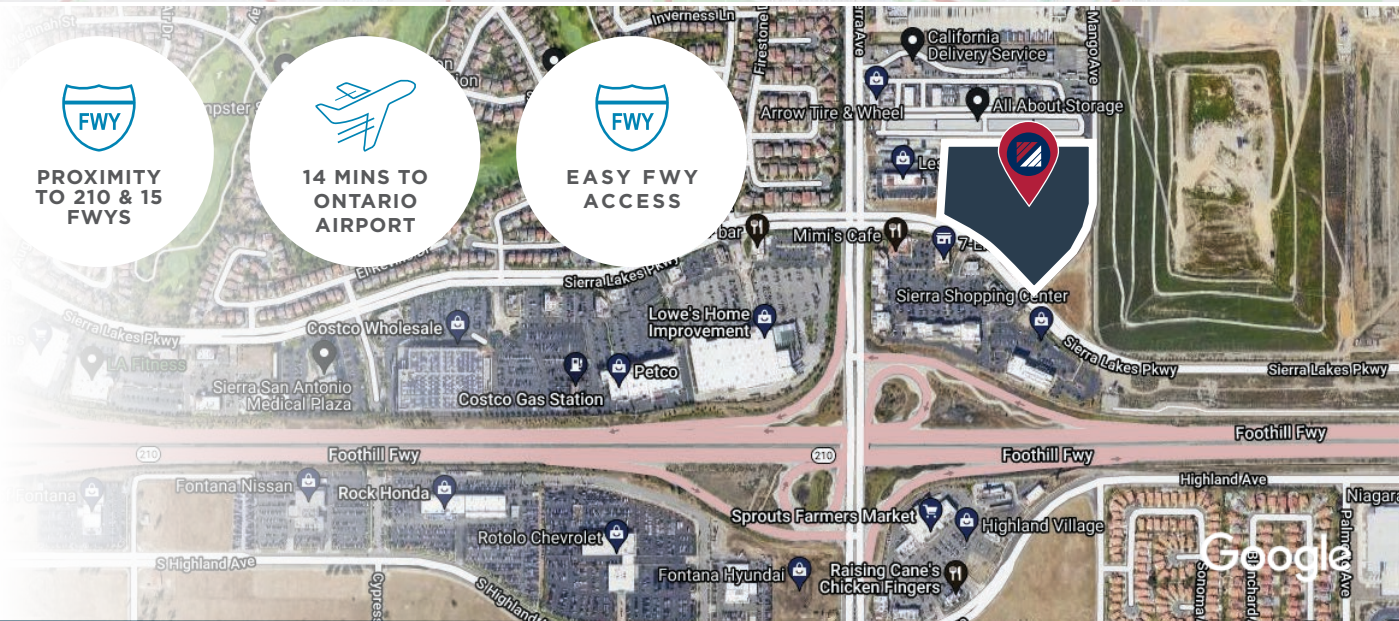
Rialto Commuter Rail
(San Bernardino Line)

12 min | 7.2 mi

AIRPORT DRIVE DISTANCE

Ontario International Airport

21 min | 13.6 mi



For More Information, Contact:

NOAH SAMARIN
EXECUTIVE VICE PRESIDENT
P: 909.912.0007
nsamarin@daumcre.com
CA License #01755814

GARY WOMACK
VICE PRESIDENT
P: 909.652.9041
gwomack@daumcre.com
CA License #00795648

DAVID GORES
VICE PRESIDENT
P: 909.652.9059
dgores@daumcre.com
CA License #01502471



FOR LEASE

**113,930 SF FREESTANDING CLASS A
DISTRIBUTION BUILDING**

FONTANA | CA

**6260
MANGO AVE.**

For More Information, Contact:

NOAH SAMARIN
EXECUTIVE VICE PRESIDENT
P: 909.912.0007
nsamarin@daumcre.com
CA License #01755814

GARY WOMACK
VICE PRESIDENT
P: 909.652.9041
gwomack@daumcre.com
CA License #00795648

DAVID GORES
VICE PRESIDENT
P: 909.652.9059
dgores@daumcre.com
CA License #01502471

 **DAUM**
COMMERCIAL REAL ESTATE SERVICES

Although all information is furnished regarding for sale, rental or financing is from sources deemed reliable, such information has not been verified and no express representation is made nor is any to be implied as to the accuracy thereof, and it is submitted subject to errors, omissions, changes of price, rental or other conditions, prior sale, lease or financing, or withdrawal without notice. D/AQ Corp. # 01129558