



AVAILABLE FOR SALE OR LEASE

MS MOUNTAIN VIEW BUSINESS PARK

BLDG.
SIX

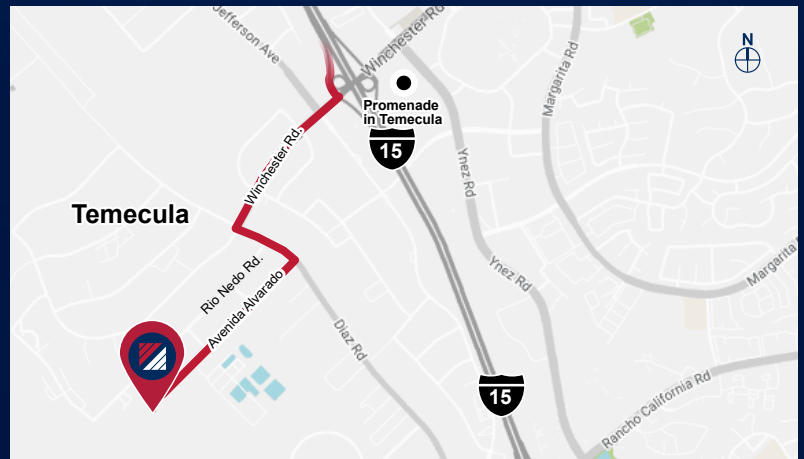


4 2 6 3 7 AVENIDA ALVARADO | TEMECULA | CA

PROPERTY HIGHLIGHTS

- ±19,769 SF Industrial Building For Sale or Lease
- Warehouse = ±17,769 SF
- Office = ±1,588 SF
- 25 Parking Spaces
- 277/480 volts, 800 AMPS
- 24' Clear Height
- ESFR K25/20-PSI Sprinklers
- 2 Dock High Door (9'x10')
- 1 Ground Level Door (12'x15')
- Zoned: Light Industrial Schedule of Permitted Uses
- Fee Simple Building
- Shared Secured Yard

ASKING NNN/MO: TBD



FOR MORE INFORMATION, CONTACT:

KEN ANDERSEN

P: 909.912.0002 | M: 949.350.3933
ken.andersen@daumcommercial.com
CADRE #00902084

CONNOR STRODE

P: 951.445.4529
cstrode@leetemecula.com
CADRE #01048055

MICHAEL W. STRODE

P: 951.445.4508
mstrode@leetemecula.com
CADRE #00798900

GORDON MIZE

P: 951.445.4504
gmize@leetemecula.com
CADRE #01275376

Although all information is furnished regarding for sale, rental or financing is from sources deemed reliable, such information has not been verified and no express representation is made nor is any to be implied as to the accuracy thereof, and it is submitted subject to errors, omissions, changes of price, rental or other conditions, prior sale, lease or financing, or withdrawal without notice. All Maps provided courtesy of Google Maps, Bing Maps, and Google Earth. D/AQ Corp. # 01129558



AVAILABLE FOR SALE OR LEASE

MS MOUNTAIN VIEW BUSINESS PARK

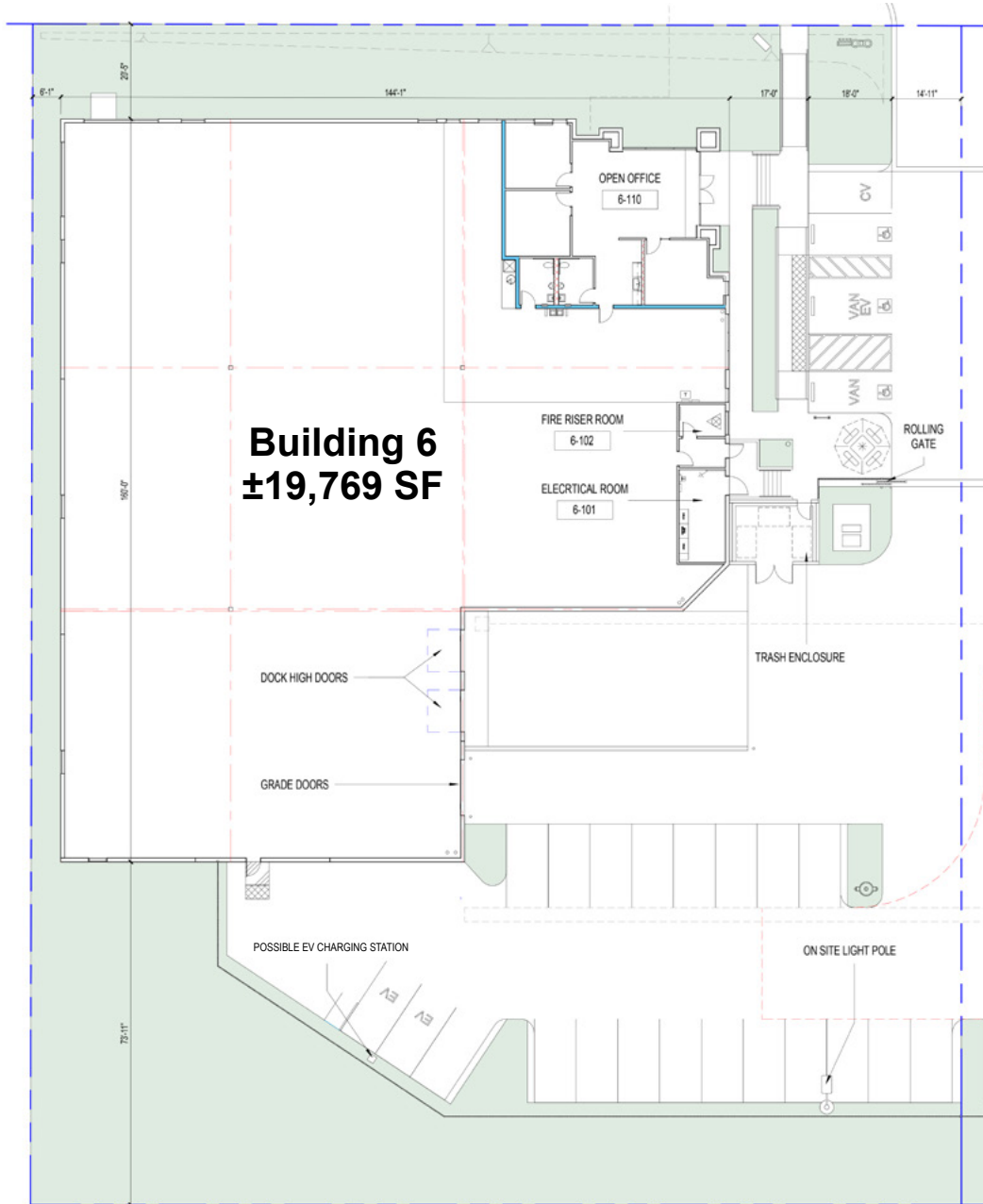
BLDG.

SIX

6

SITE & OFFICE PLAN

4 2 6 3 7 AVENIDA ALVARADO | TEMECULA | CA



FOR MORE INFORMATION, CONTACT:

KEN ANDERSEN

P: 909.912.0002 | M: 949.350.3933
ken.andersen@daumcommercial.com
CADRE #00902084

CONNOR STRODE

P: 951.445.4529
cstrode@leetemecula.com
CADRE #01048055

MICHAEL W. STRODE

P: 951.445.4508
mstrode@leetemecula.com
CADRE #00798900

GORDON MIZE

P: 951.445.4504
gmize@leetemecula.com
CADRE #01275376

Although all information is furnished regarding for sale, rental or financing is from sources deemed reliable, such information has not been verified and no express representation is made nor is any to be implied as to the accuracy thereof, and it is submitted subject to errors, omissions, changes of price, rental or other conditions, prior sale, lease or financing, or withdrawal without notice. All Maps provided courtesy of Google Maps, Bing Maps, and Google Earth. D/AQ Corp. # 01129558

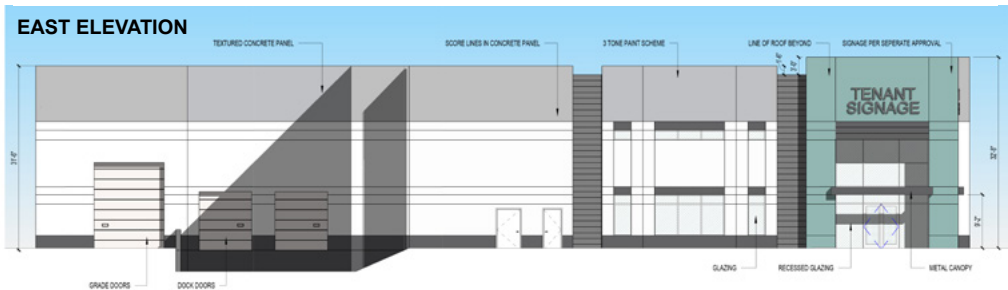
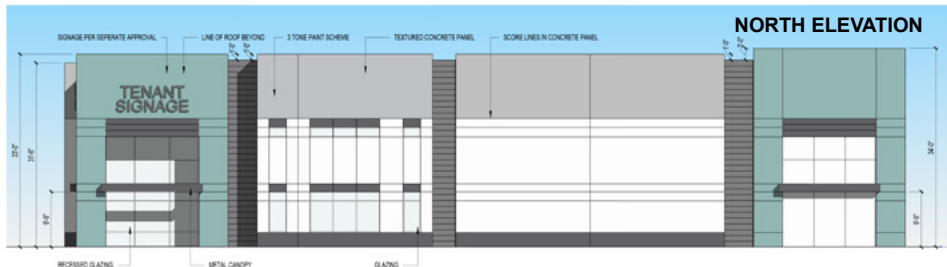


AVAILABLE FOR SALE OR LEASE

MS MOUNTAIN VIEW BUSINESS PARK

BLDG. SIX

4 2 6 3 7 AVENIDA ALVARADO | TEMECULA | CA



FOR MORE INFORMATION, CONTACT:

KEN ANDERSEN

P: 909.912.0002 | M: 949.350.3933
ken.andersen@daumcommercial.com
CADRE #00902084

CONNOR STRODE

P: 951.445.4529
cstrode@leetemecula.com
CADRE #01048055

MICHAEL W. STRODE

P: 951.445.4508
mstrode@leetemecula.com
CADRE #00798900

GORDON MIZE

P: 951.445.4504
gmize@leetemecula.com
CADRE #01275376

Although all information is furnished regarding for sale, rental or financing is from sources deemed reliable, such information has not been verified and no express representation is made nor is any to be implied as to the accuracy thereof, and it is submitted subject to errors, omissions, changes of price, rental or other conditions, prior sale, lease or financing, or withdrawal without notice. All Maps provided courtesy of Google Maps, Bing Maps, and Google Earth. D/AQ Corp. # 01129558



AVAILABLE FOR SALE OR LEASE

MS MOUNTAIN VIEW BUSINESS PARK

BLDG.
SIX

AMENITIES MAP

4 2 6 3 7 AVENIDA ALVARADO | TEMECULA | CA



FOR MORE INFORMATION, CONTACT:

KEN ANDERSEN

P: 909.912.0002 | M: 949.350.3933
ken.andersen@daumcommercial.com
CADRE #00902084

CONNOR STRODE

P: 951.445.4529
cstrode@leetemecula.com
CADRE #01048055

MICHAEL W. STRODE

P: 951.445.4508
mstrode@leetemecula.com
CADRE #00798900

GORDON MIZE

P: 951.445.4504
gmize@leetemecula.com
CADRE #01275376

Although all information is furnished regarding for sale, rental or financing is from sources deemed reliable, such information has not been verified and no express representation is made nor is any to be implied as to the accuracy thereof, and it is submitted subject to errors, omissions, changes of price, rental or other conditions, prior sale, lease or financing, or withdrawal without notice. All Maps provided courtesy of Google Maps, Bing Maps, and Google Earth. D/A/Q Corp. # 01129558

