

5236 FARADAY COURT CHINO | CA



FOR LEASE
± 27,075 SF
INDUSTRIAL BUILDING

FOR MORE INFORMATION, CONTACT:

STEVE HASTON
EXECUTIVE VICE PRESIDENT
P: 909.912.0013 | M: 909.234.1170
E: SHASTON@DAUMCOMMERCIAL.COM
CADRE #01358725



JOHN ESPINOSA
SENIOR VICE PRESIDENT/PRINCIPAL
D: 714.608.3610
E: JESPINOSA@LEE-ASSOCIATES.COM
CADRE #01255441



FOR LEASE ±27,075 SF

INDUSTRIAL BUILDING

5236 FARADAY COURT
CHINO | CA

PROPERTY FEATURES

- ±27,075 SF Industrial Building
- ±6,730 SF of Two-Story Office Space
- Three (3) Ground Level Doors (12'x14')
- 17'8" Clearance Height
- Fire Sprinklered
- Large, Paved & Secured Yard Area
- 600 Amps, 277/480 Volts (verify)
- Concrete Tilt Up Construction
- Monument Signage Available
- End of the Cul-de-Sac Building
- Excellent Chino Location



FOR MORE INFORMATION, CONTACT:

STEVE HASTON

EXECUTIVE VICE PRESIDENT

P: 909.912.0013 | M: 909.234.1170

E: SHASTON@DAUMCOMMERCIAL.COM

CADRE #01358725

JOHN ESPINOSA

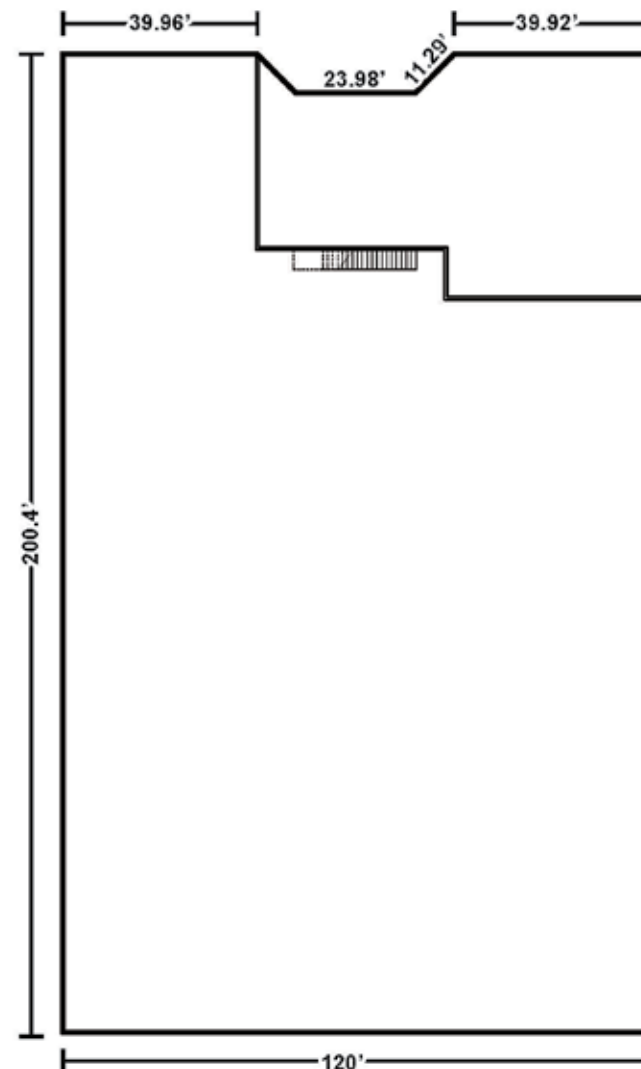
SENIOR VICE PRESIDENT/PRINCIPAL

D: 714.608.3610

E: JESPINOSA@LEE-ASSOCIATES.COM

CADRE #01255441

FLOOR PLAN



D/AQ Corp. #01129558. Maps Courtesy ©Google & ©Microsoft. Although all information is furnished regarding for sale, rental or financing is from sources deemed reliable, such information has not been verified and no express representation is made nor is any to be implied as to the accuracy thereof, and it is submitted subject to errors, omissions, changes of price, rental or other conditions, prior sale, lease or financing, or withdrawal without notice.

DAUM
COMMERCIAL REAL ESTATE SERVICES

LEE & ASSOCIATES
COMMERCIAL REAL ESTATE SERVICES



FOR LEASE ±27,075 SF

INDUSTRIAL BUILDING

5236 FARADAY COURT
CHINO | CA



D/AQ Corp. #01129558. Maps Courtesy ©Google & ©Microsoft. Although all information is furnished regarding for sale, rental or financing is from sources deemed reliable, such information has not been verified and no express representation is made nor is any to be implied as to the accuracy thereof, and it is submitted subject to errors, omissions, changes of price, rental or other conditions, prior sale, lease or financing, or withdrawal without notice.

FOR LEASE ±27,075 SF

INDUSTRIAL BUILDING

5236 FARADAY COURT
CHINO | CA



FOR MORE INFORMATION, CONTACT:

STEVE HASTON
EXECUTIVE VICE PRESIDENT
P: 909.912.0013 | M: 909.234.1170
E: SHASTON@DAUMCOMMERCIAL.COM
CADRE #01358725

JOHN ESPINOSA
SENIOR VICE PRESIDENT/PRINCIPAL
D: 714.608.3610
E: JESPINOSA@LEE-ASSOCIATES.COM
CADRE #01255441

DAUM
COMMERCIAL REAL ESTATE SERVICES

LEE & ASSOCIATES
COMMERCIAL REAL ESTATE SERVICES

Although all information is furnished regarding for sale, rental or financing is from sources deemed reliable, such information has not been verified and no express representation is made nor is any to be implied as to the accuracy thereof, and it is submitted subject to errors, omissions, changes of price, rental or other conditions, prior sale, lease or financing, or withdrawal without notice. D/AQ Corp. # 01129558



FOR LEASE ±27,075 SF

INDUSTRIAL BUILDING

5236 FARADAY COURT
CHINO | CA



D/AQ Corp. #01129558. Maps Courtesy ©Google & ©Microsoft. Although all information is furnished regarding for sale, rental or financing is from sources deemed reliable, such information has not been verified and no express representation is made nor is any to be implied as to the accuracy thereof, and it is submitted subject to errors, omissions, changes of price, rental or other conditions, prior sale, lease or financing, or withdrawal without notice.

FOR LEASE ±27,075 SF

INDUSTRIAL BUILDING

5236 FARADAY COURT
CHINO | CA

LOCATION HIGHLIGHTS

COMMUTER RAIL DRIVE DISTANCE

Downtown Pomona Commuter Rail

(Riverside Line)

13 min | 7.1 mi

Montclair Commuter Rail

(San Bernardino Line)

14 min | 7.3 mi

AIRPORT DRIVE DISTANCE

Ontario International Airport

18 min | 10 mi



PROXIMITY
TO 60
& 71 FWYS



18 MINS TO
ONTARIO
AIRPORT



EASY FWY
ACCESS

FOR MORE INFORMATION, CONTACT:

STEVE HASTON

EXECUTIVE VICE PRESIDENT

P: 909.912.0013 | M: 909.234.1170

E: SHASTON@DAUMCOMMERCIAL.COM

CADRE #01358725

JOHN ESPINOSA

SENIOR VICE PRESIDENT/PRINCIPAL

D: 714.608.3610

E: JESPINOSA@LEE-ASSOCIATES.COM

CADRE #01255441



Although all information is furnished regarding for sale, rental or financing is from sources deemed reliable, such information has not been verified and no express representation is made nor is any to be implied as to the accuracy thereof, and it is submitted subject to errors, omissions, changes of price, rental or other conditions, prior sale, lease or financing, or withdrawal without notice. D/AQ Corp. # 01129558

FOR LEASE ±27,075 SF

INDUSTRIAL BUILDING

5236 FARADAY COURT CHINO | CA

FOR MORE INFORMATION, CONTACT:

STEVE HASTON

EXECUTIVE VICE PRESIDENT

P: 909.912.0013 | M: 909.234.1170

E: SHASTON@DAUMCOMMERCIAL.COM

CADRE #01358725

JOHN ESPINOSA

SENIOR VICE PRESIDENT/PRINCIPAL

D: 714.608.3610

E: JESPINOSA@LEE-ASSOCIATES.COM

CADRE #01255441

DAUM
COMMERCIAL REAL ESTATE SERVICES

**LEE &
ASSOCIATES**
COMMERCIAL REAL ESTATE SERVICES

Although all information is furnished regarding for sale, rental or financing is from sources deemed reliable, such information has not been verified and no express representation is made nor is any to be implied as to the accuracy thereof, and it is submitted subject to errors, omissions, changes of price, rental or other conditions, prior sale, lease or financing, or withdrawal without notice. D/AQ Corp. # 01129558