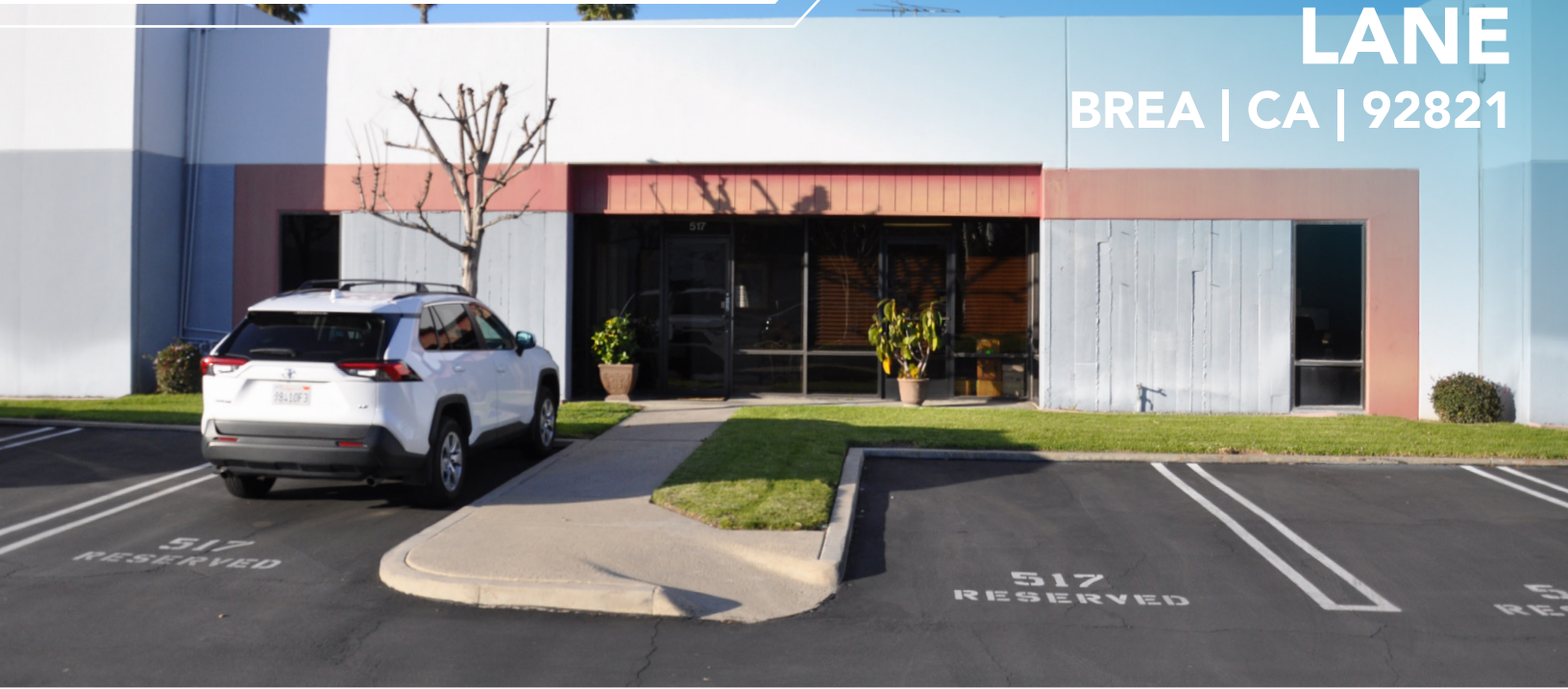


# FOR LEASE

## 517 MERCURY LANE

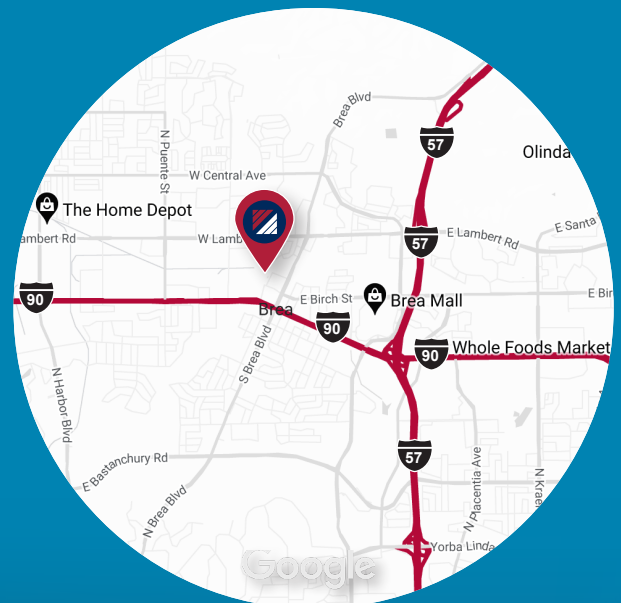
BREA | CA | 92821



### ±4,015 SF INDUSTRIAL CONDO

#### PROPERTY HIGHLIGHTS:

- ±4,015 Square Foot Free Standing Industrial Condo
- ±1,200 Square Feet Of Office
- Two (2) GL Doors (10'x12')
- Two (2) Restrooms
- 400 Amps Of Power (Verify)
- Drive Around Building
- Part Of Imperial West Business Center
- Convenient Access To The 57 Fwy & Imperial Hwy
- 513 Mercury Ln (5,965 SF Next Door) Also Available
- Warehouse Floor Drains/Sink



#### FOR MORE INFORMATION, CONTACT:

DENNIS HOLT | VICE PRESIDENT  
P: 949.242.1714  
DENNIS.HOLT@DAUMCRE.COM  
CADRE #01948978

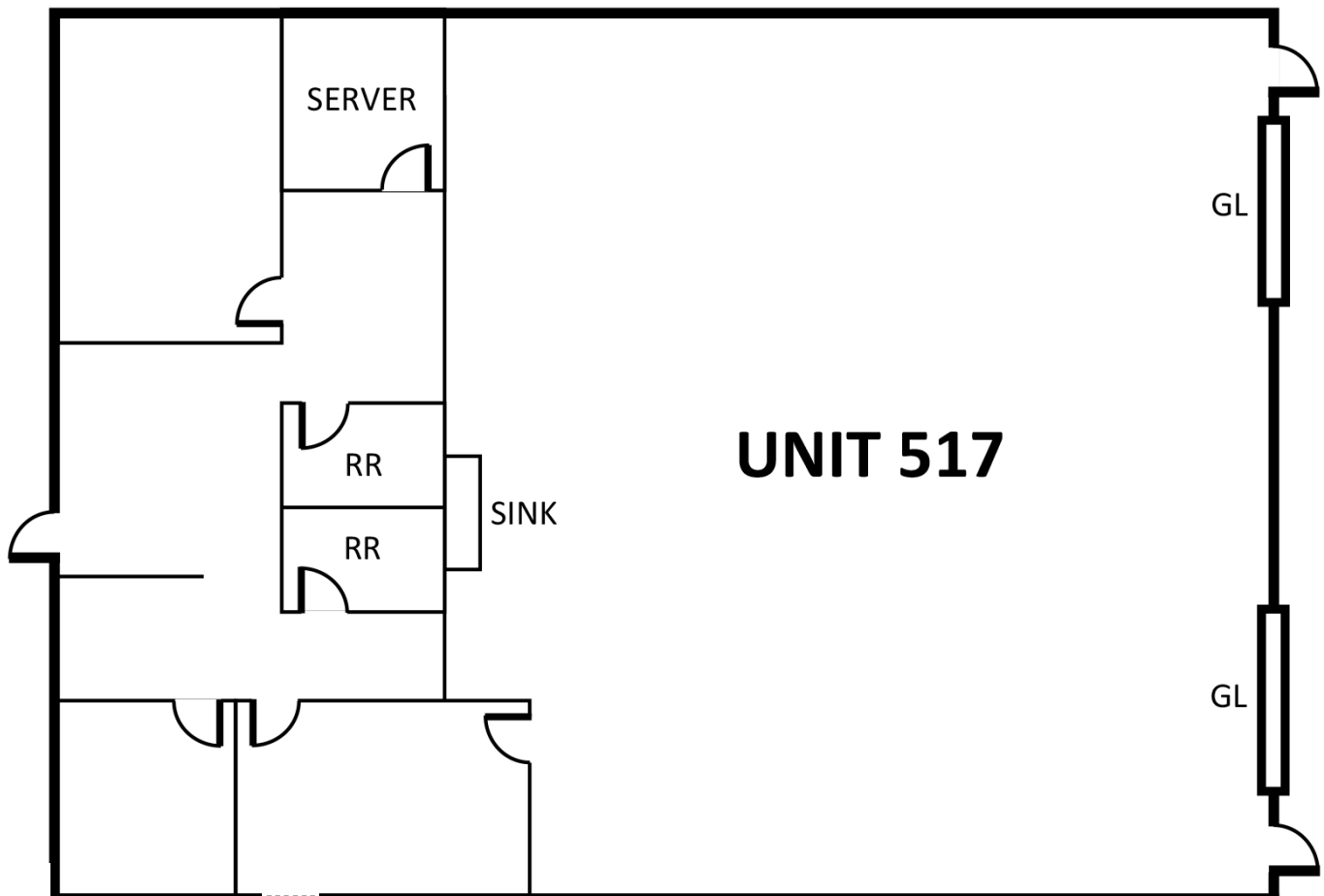
PAUL GINGRICH | EXEC. V.P.  
P: 714.941.5333  
PAUL.GINGRICH@DAUMCRE.COM  
CADRE #01299770

Although all information is furnished regarding for sale, rental or financing is from sources deemed reliable, such information has not been verified and no express representation is made nor is any to be implied as to the accuracy thereof, and it is submitted subject to errors, omissions, changes of price, rental or other conditions, prior sale, lease or financing, or withdrawal without notice. D/AQ Corp. # 01129558

# FOR LEASE

517 MERCURY LN | BREA | CA

## SITE PLAN



\*NOT TO SCALE

Although all information is furnished regarding for sale, rental or financing is from sources deemed reliable, such information has not been verified and no express representation is made nor is any to be implied as to the accuracy thereof, and it is submitted subject to errors, omissions, changes of price, rental or other conditions, prior sale, lease or financing, or withdrawal without notice. D/AQ Corp. # 01129558

DAUM COMMERCIAL REAL ESTATE SERVICES | [WWW.DAUMCOMMERCIAL.COM](http://WWW.DAUMCOMMERCIAL.COM)

**DAUM**  
COMMERCIAL REAL ESTATE SERVICES