

**K P INC.**

AVAILABLE  
**DAUM**  
COMMERCIAL REAL ESTATE SERVICES  
213.626.9101  
www.daumcommercial.com  
CARLOS CASTILLO  
DAVID MUIR

**MIRYA**  
PRODUCE  
(323) 496 7

2915 Manitou A  
Los Angeles, CA 9



**FOR LEASE 13,313 SF - 18,500 SF**

**STAND-ALONE BUILDING**

**130 W. ELMYRA STREET**  
**LOS ANGELES | CA**

For More Information, Contact:

**CARLOS CASTILLO**  
ASSOCIATE  
P: 213.270.2263 | F: 213.621.0903  
ccastillo@daumcommercial.com  
CA License #01451618

**DAVID MUIR**  
EXECUTIVE VP  
P: 213.270.2244  
dmuir@daumcommercial.com  
CA License #01210653



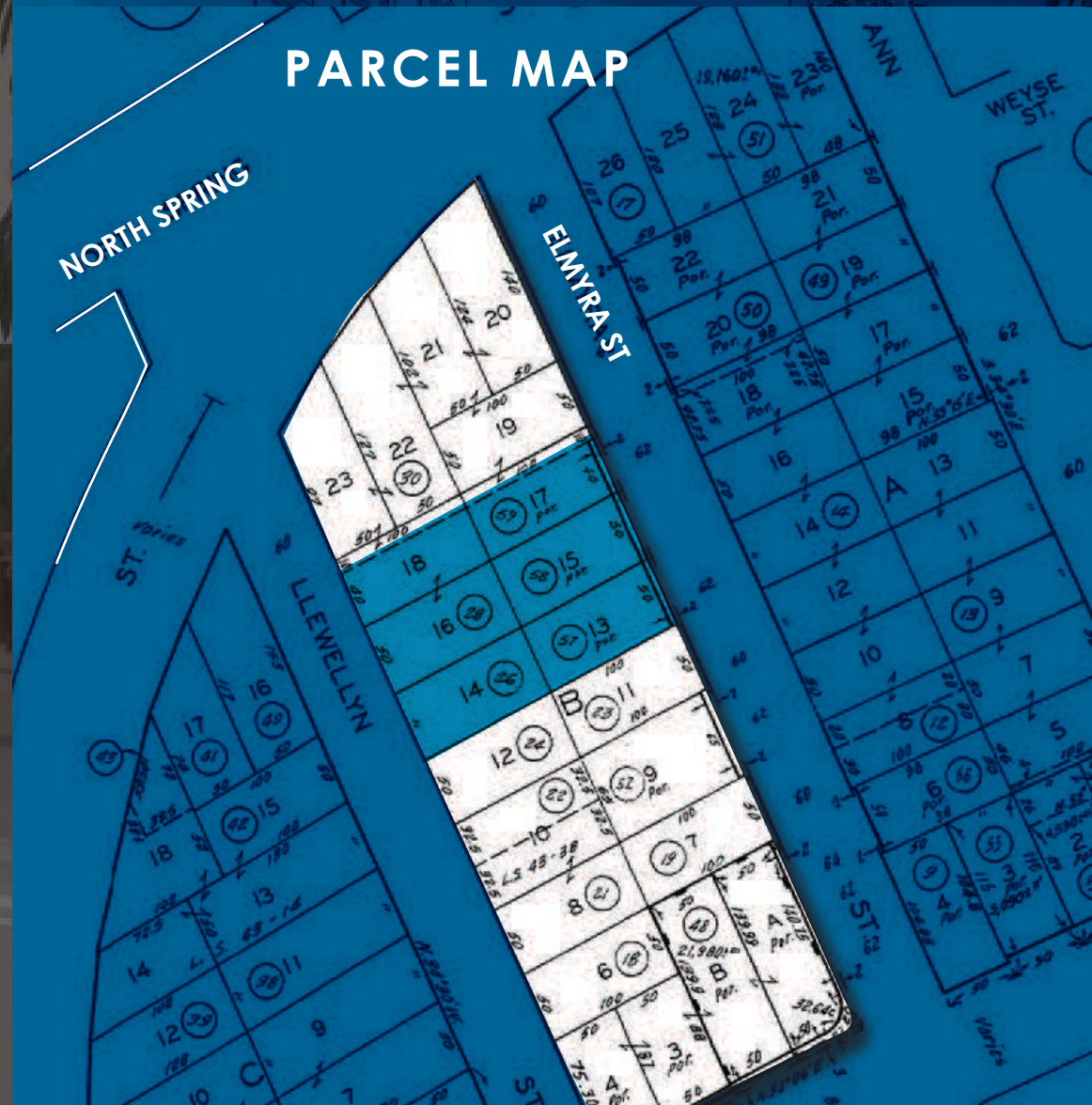
## PROPERTY HIGHLIGHTS

- 13,313 SF – 18,500 SF Available
- North China Town Location
- Across The Street From New 318 Apartment Development
- Walking Distance to Brewery and Park
- Year Built: 1995
- Zoning: UI
- APN: 5409-006-026, 028, 057, 058, 059
- Lease Rate: 13,313 SF Available at \$2.25 PSF - Gross
- Lease Rate: 18,500 SF Available at \$1.99 PSF

Although all information is furnished regarding for sale, rental or financing is from sources deemed reliable, such information has not been verified and no express representation is made nor is any to be implied as to the accuracy thereof, and it is submitted subject to errors, omissions, changes of price, rental or other conditions, prior sale, lease or financing, or withdrawal without notice. D/AQ Corp. # 01129558

# 130 W. ELMYRA STREET LOS ANGELES | CA

## PARCEL MAP





# 130 W. ELMYRA STREET

LOS ANGELES | CA

BLOSSOM PLAZA

COLLEGE STATION

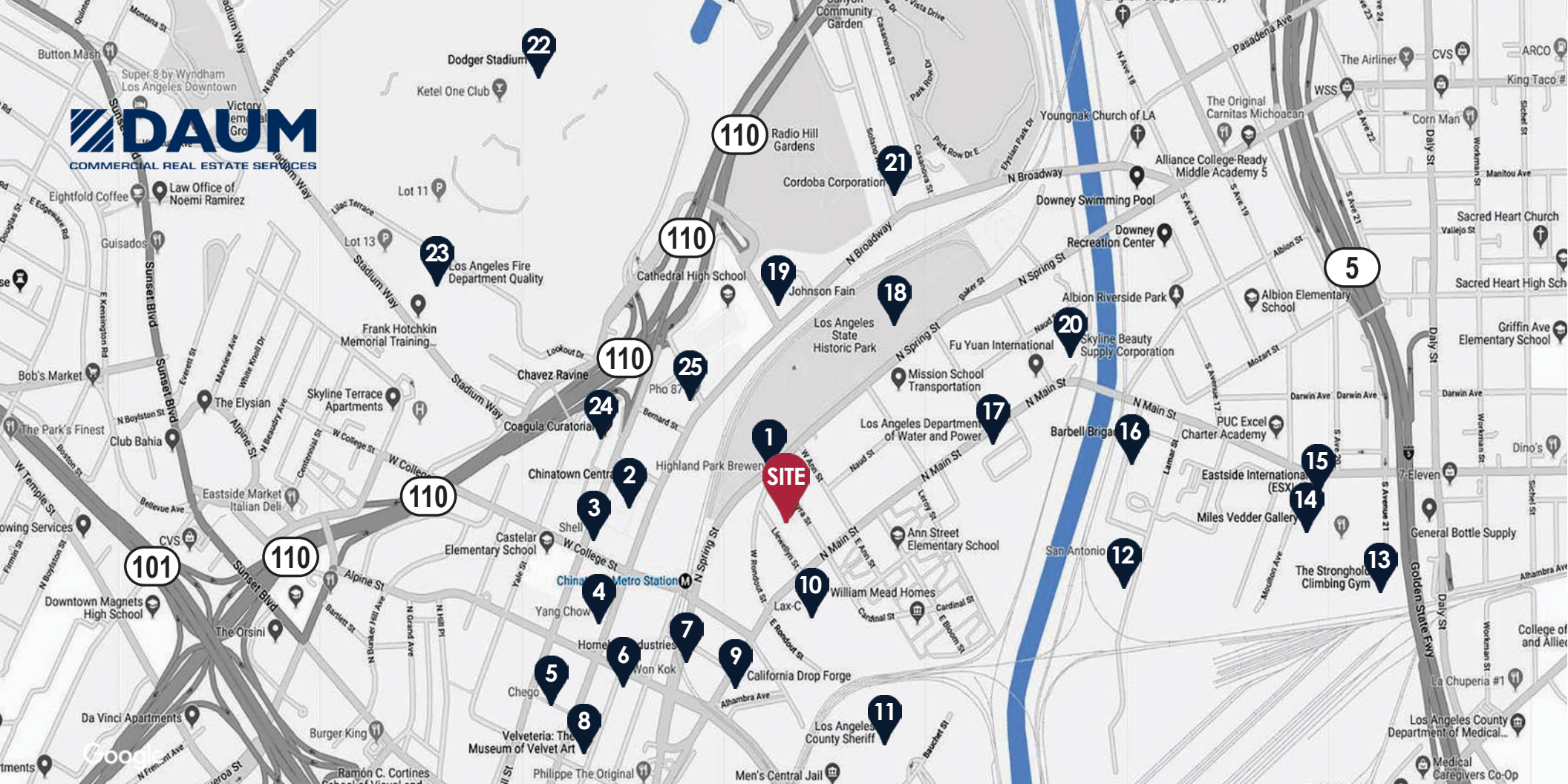
DOWNTOWN LOS ANGELES

LA HISTORIC PARK

HIGHLAND PARK BREWING

Elmyra St





AMENITIES:

- |   |                                      |                                       |
|---|--------------------------------------|---------------------------------------|
| 1. Highland Park Brewery                | 10. Lax-C                            | 18. LA State Park                     |
| 2. Chinatown Central                    | 11. Los Angeles County Sheriff       | 19. Johnson Fain                      |
| 3. Shell                                | 12. San Antonio Winery               | 20. Skyline Beauty Supply Corporation |
| 4. Yang Chow                            | 13. The Stronghold Climbing Gym      | 21. Cordoba Corporation               |
| 5. Chego                                | 14. Miles Vedder Gallery             | 22. Dodger Stadium                    |
| 6. Won Kok                              | 15. Eastside International           | 23. LA Fire Department Quality        |
| 7. Homeboy Industries                   | 16. Barbell Brigade Gym              | 24. Coagula Curatorial                |
| 8. Velveteria: The Museum of Velvet Art | 17. LA Department of Water and Power | 25. Pho 87                            |
| 9. California Drop Forge                |                                      |                                       |

**130 W. ELMYRA STREET**  
LOS ANGELES | CA