

S. PACIFIC AVE.

W. 16TH ST.



# 483

W. 16TH ST.  
SAN PEDRO | CA

## FOR LEASE

COMMERCIAL LAND WITH SHOP/GARAGE



4,000 SF  
METAL GARAGE



15,000 SF  
LOT SIZE



LAC2, LAR2  
ZONING



LARGE YARD  
PARKING



### PROPERTY HIGHLIGHTS

- Commercial Land For Lease.
- Commercial Zoning on Garage Portion of Property.
- 4,000 Square Foot metal Garage on Approximately 15,000 SF of Land.
- APN 7456-023-029 Zoned as LAC2.
- Ideal Location for a Boat Yard, Auto Repair Shop, or Auto Collision Repair Shop.
- APN 7456-023-003 and -004 Zoned as LAR2.
- \$7500 (\$0.50/SF) for Months One Through Six, Then \$9500 Thereafter

FOR MORE INFORMATION PLEASE CONTACT:

**CHUCK BRILL**

EXECUTIVE VICE PRESIDENT | PRINCIPAL

P: 310.538.6710 | M: 310.710.3127

chuck.brill@daumcommercial.com

CADRE #00974881

Although all information is furnished regarding for sale, rental or financing is from sources deemed reliable, such information has not been verified and no express representation is made nor is any to be implied as to the accuracy thereof, and it is submitted subject to errors, omissions, changes of price, rental or other conditions, prior sale, lease or financing, or withdrawal without notice.

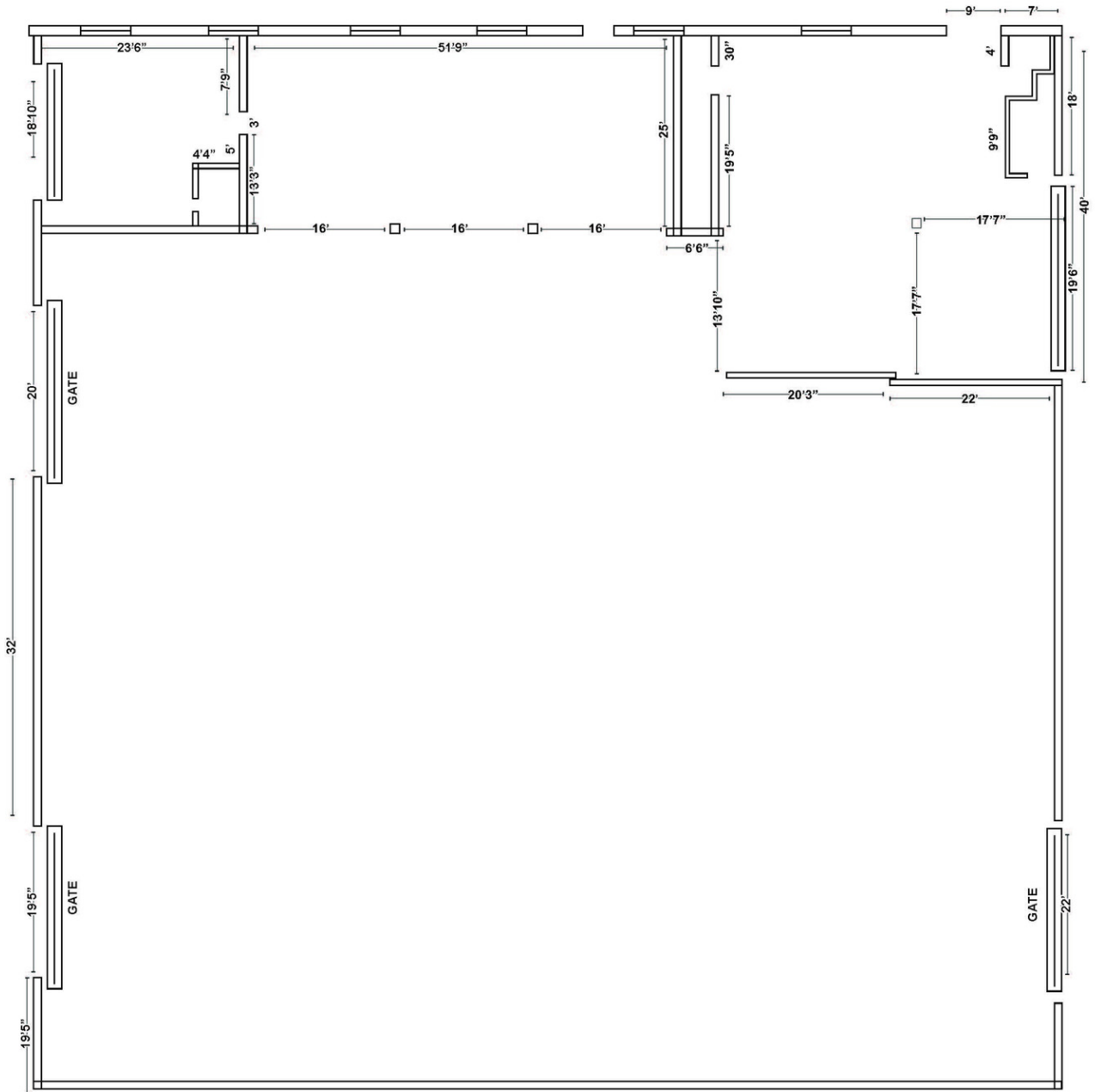


# 483

W. 16TH ST.  
SAN PEDRO | CA

# FOR LEASE

COMMERCIAL LAND WITH SHOP/GARAGE



NOT TO SCALE



Although all information is furnished regarding for sale, rental or financing is from sources deemed reliable, such information has not been verified and no express representation is made nor is any to be implied as to the accuracy thereof, and it is submitted subject to errors, omissions, changes of price, rental or other conditions, prior sale, lease or financing, or withdrawal without notice.

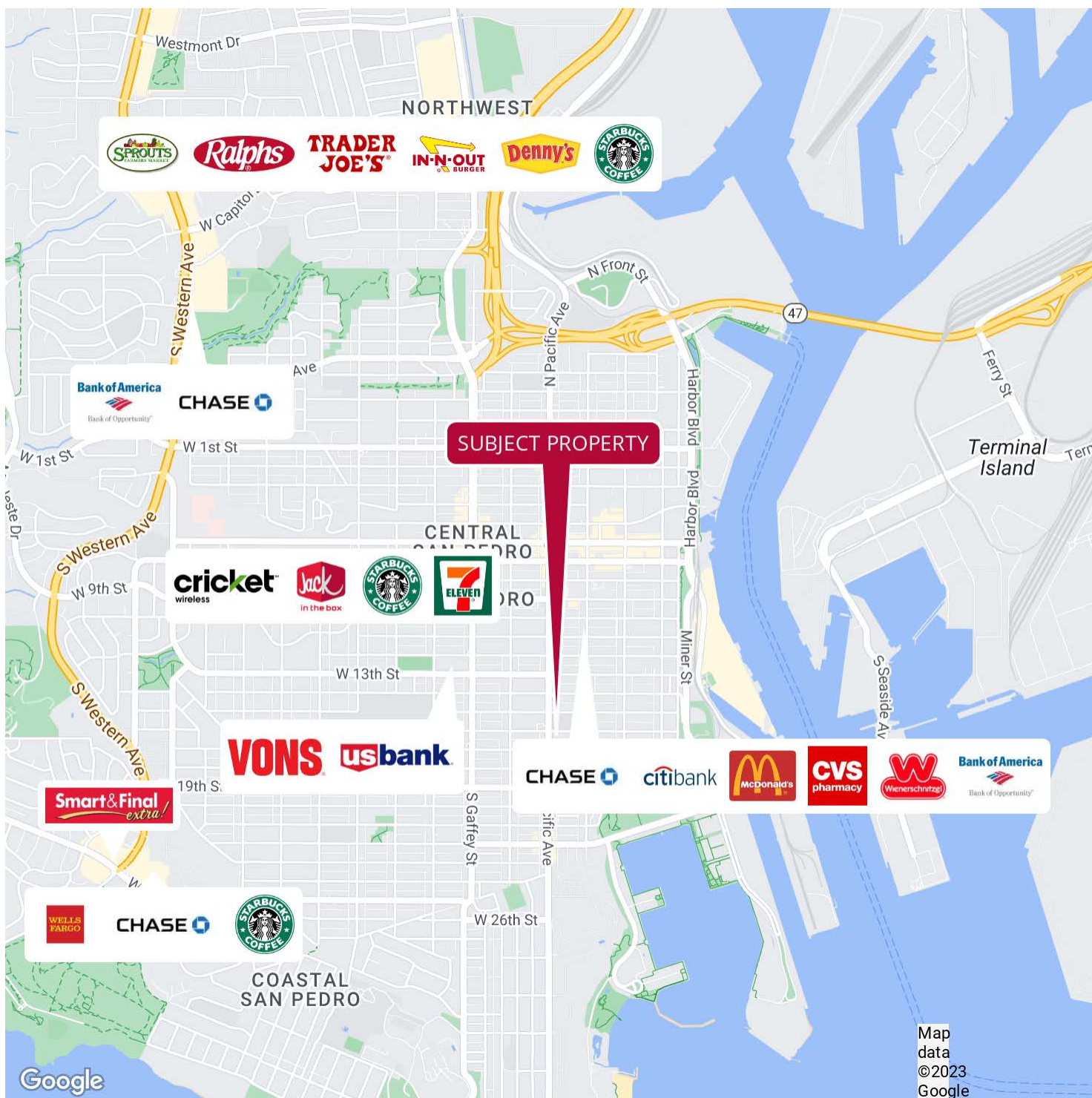
**DAUM**  
COMMERCIAL REAL ESTATE SERVICES

# 483

W. 16TH ST.  
SAN PEDRO | CA

# FOR LEASE

COMMERCIAL LAND WITH SHOP/GARAGE



Although all information is furnished regarding for sale, rental or financing is from sources deemed reliable, such information has not been verified and no express representation is made nor is any to be implied as to the accuracy thereof, and it is submitted subject to errors, omissions, changes of price, rental or other conditions, prior sale, lease or financing, or withdrawal without notice.

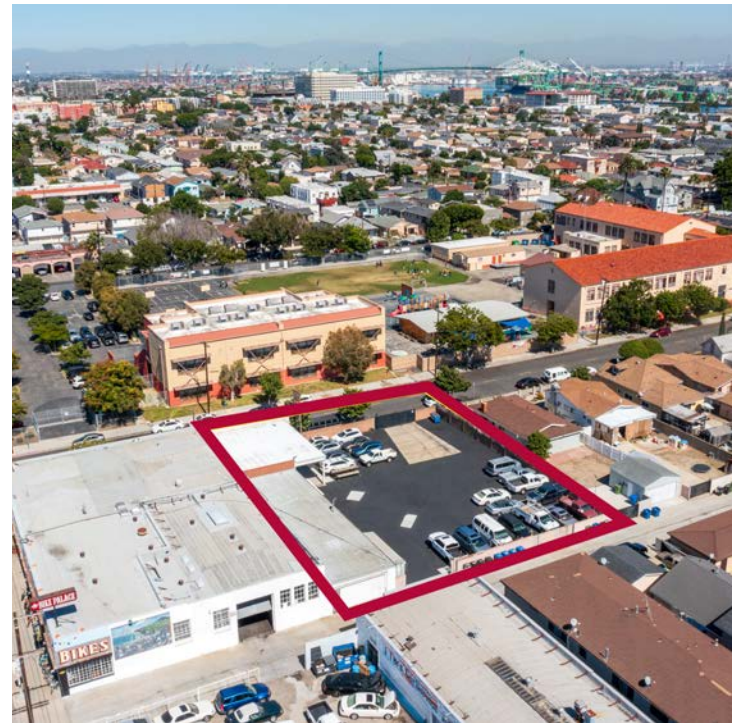
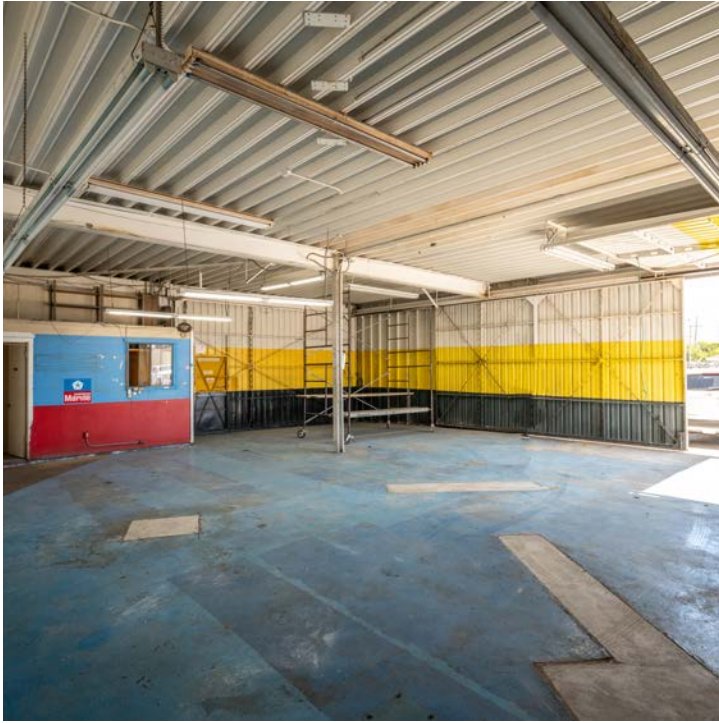
**DAUM**  
COMMERCIAL REAL ESTATE SERVICES

# 483

W. 16TH ST, SAN PEDRO  
SAN PEDRO | CA

# FOR LEASE

LAND



Although all information is furnished regarding for sale, rental or financing is from sources deemed reliable, such information has not been verified and no express representation is made nor is any to be implied as to the accuracy thereof, and it is submitted subject to errors, omissions, changes of price, rental or other conditions, prior sale, lease or financing, or withdrawal without notice.

**DAUM**  
COMMERCIAL REAL ESTATE SERVICES