



2640

E. 26TH STREET

VERNON | CA 90058

FOR LEASE OR SALE

±40,129 SF AVAILABLE



± 40,129 SF
BUILDING AREA



21
LOADING POSITIONS



17' - 20'
CLEAR HEIGHT



1.89 AC
LOT SIZE



51
PARKING SPACES



600A/277-480V 3P
POWER
Tenant/Buyer to
Verify Independently

FOR MORE INFORMATION, CONTACT:

ANTHONY BERGEMAN, SIOR
EXECUTIVE | V. P.
P: 949.341.4511
ABERGEMAN@DAUMCRE.COM
CADRE #01841828

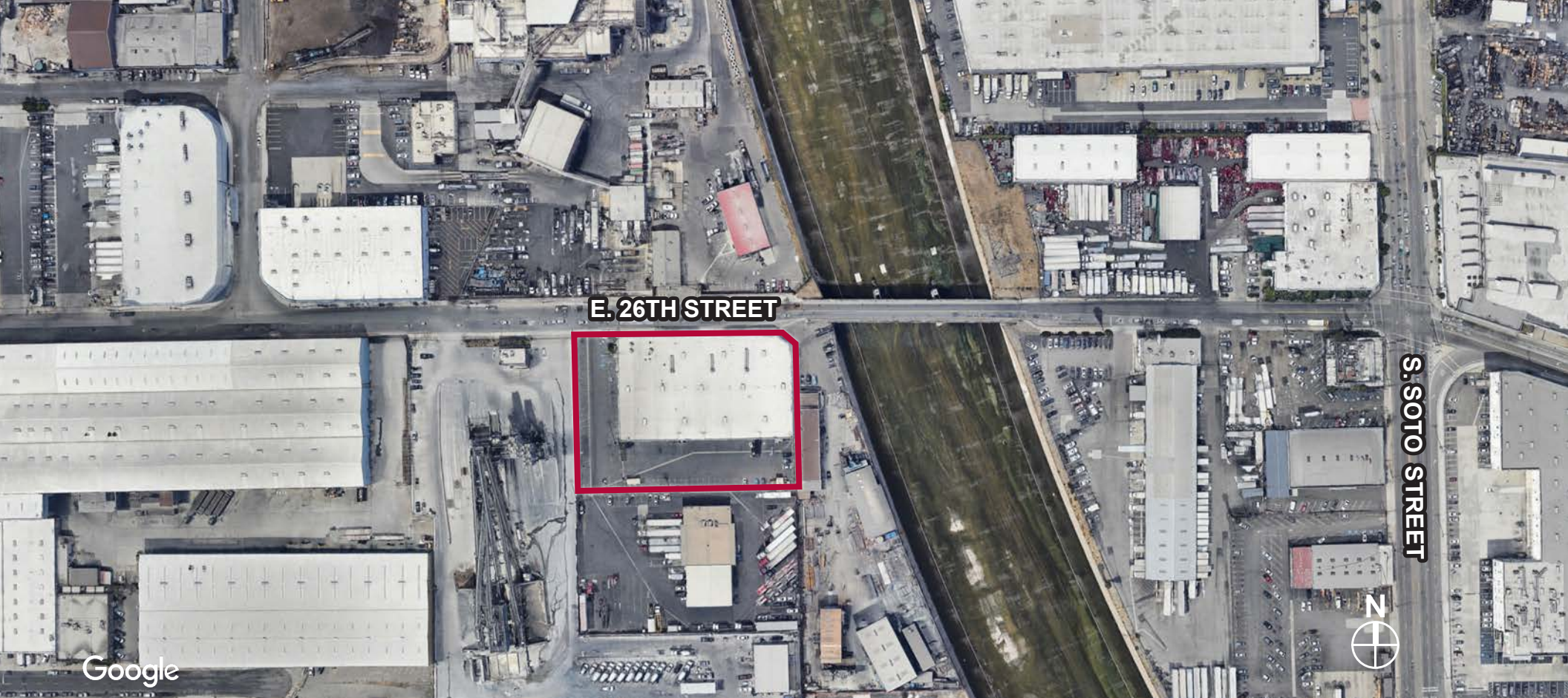
MICHAEL CHASE
VICE PRESIDENT
P: 949.341.4513
MCHASE@DAUMCRE.COM
CADRE #02071146

MOON LIM
EXECUTIVE | V.P.
P: 213.270.2256
MLIM@DAUMCRE.COM
CADRE #01903050

RYAN JUDD
ASSOCIATE
P: 213.270.2220
RJUDD@DAUMCRE.COM
CADRE #01992275


COMMERCIAL REAL ESTATE SERVICES

D/AQ Corp. #01129558. Maps Courtesy ©Google & ©Microsoft. Although all information is furnished regarding for sale, rental or financing from sources deemed reliable, such information has not been verified and no express representation is made nor is any to be implied as to the accuracy thereof, and it is submitted subject to errors, omissions, changes of price, rental or other conditions, prior sale, lease or financing, or withdrawal without notice.



FOR LEASE OR SALE | $\pm 40,129$ SF AVAILABLE

PROPERTY HIGHLIGHTS

- $\pm 40,129$ SF Available
- Both Unit A ($\pm 26,474$ SF) and B ($\pm 13,655$ SF) Available Together or Separately
- Thirteen (13) Dock High Loading Positions and Eight (8) Box/Delivery Truck Positions for the Entire Building

- 1.89 Acres Lot Size
- $\pm 8,741$ SF Office Space
- 17'-20' Clear Height
- 600A/277-480 Volts, 3 Phase Power
Tenant/Buyer to Verify Independently

UNIT HIGHLIGHTS

- Unit A has Ten (10) Dock High Loading Positions and Eight (8) Box/Delivery Truck Positions
- Unit B has Three (3) Dock High Loading Positions

D/AQ Corp. #01129558. Maps Courtesy @Google & @Microsoft. Although all information is furnished regarding for sale, rental or financing from sources deemed reliable, such information has not been verified and no express representation is made nor is any to be implied as to the accuracy thereof, and it is submitted subject to errors, omissions, changes of price, rental or other conditions, prior sale, lease or financing, or withdrawal without notice.

FOR LEASE OR SALE
40,129 SF AVAILABLE

PHOTOS



2640
E. 26TH STREET
VERNON | CA 90058

FOR MORE INFORMATION, CONTACT:

ANTHONY BERGEMAN, SIOR
EXECUTIVE | V. P.
P: 949.341.4511
ABERGEMAN@DAUMCRE.COM
CADRE #01841828

MICHAEL CHASE
VICE PRESIDENT
P: 949.341.4513
MCHASE@DAUMCRE.COM
CADRE #02071146

MOON LIM
EXECUTIVE | V.P.
P: 213.270.2256
MLIM@DAUMCRE.COM
CADRE #01903050

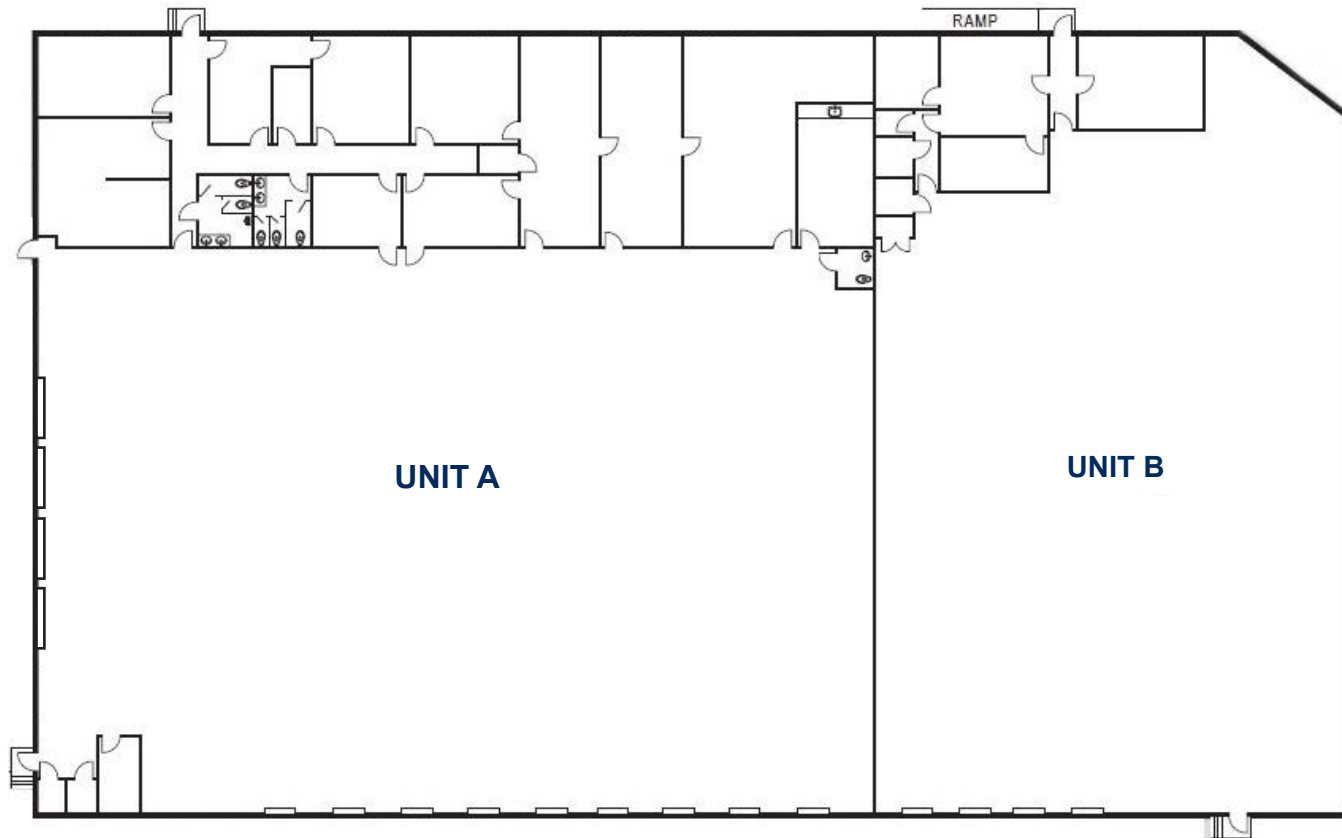
RYAN JUDD
ASSOCIATE
P: 213.270.2220
RJUDD@DAUMCRE.COM
CADRE #01992275

DAUM
COMMERCIAL REAL ESTATE SERVICES

D/AQ Corp. #01129558. Maps Courtesy ©Google & ©Microsoft. Although all information is furnished regarding for sale, rental or financing from sources deemed reliable, such information has not been verified and no express representation is made nor is any to be implied as to the accuracy thereof, and it is submitted subject to errors, omissions, changes of price, rental or other conditions, prior sale, lease or financing, or withdrawal without notice.

FOR LEASE OR SALE 40,129 SF AVAILABLE

FLOOR PLAN



2640
E. 26TH STREET
VERNON | CA 90058

FOR MORE INFORMATION, CONTACT:

ANTHONY BERGEMAN, SIOR
EXECUTIVE | V. P.
P: 949.341.4511
ABERGEMAN@DAUMCRE.COM
CADRE #01841828

MICHAEL CHASE
VICE PRESIDENT
P: 949.341.4513
MCHASE@DAUMCRE.COM
CADRE #02071146

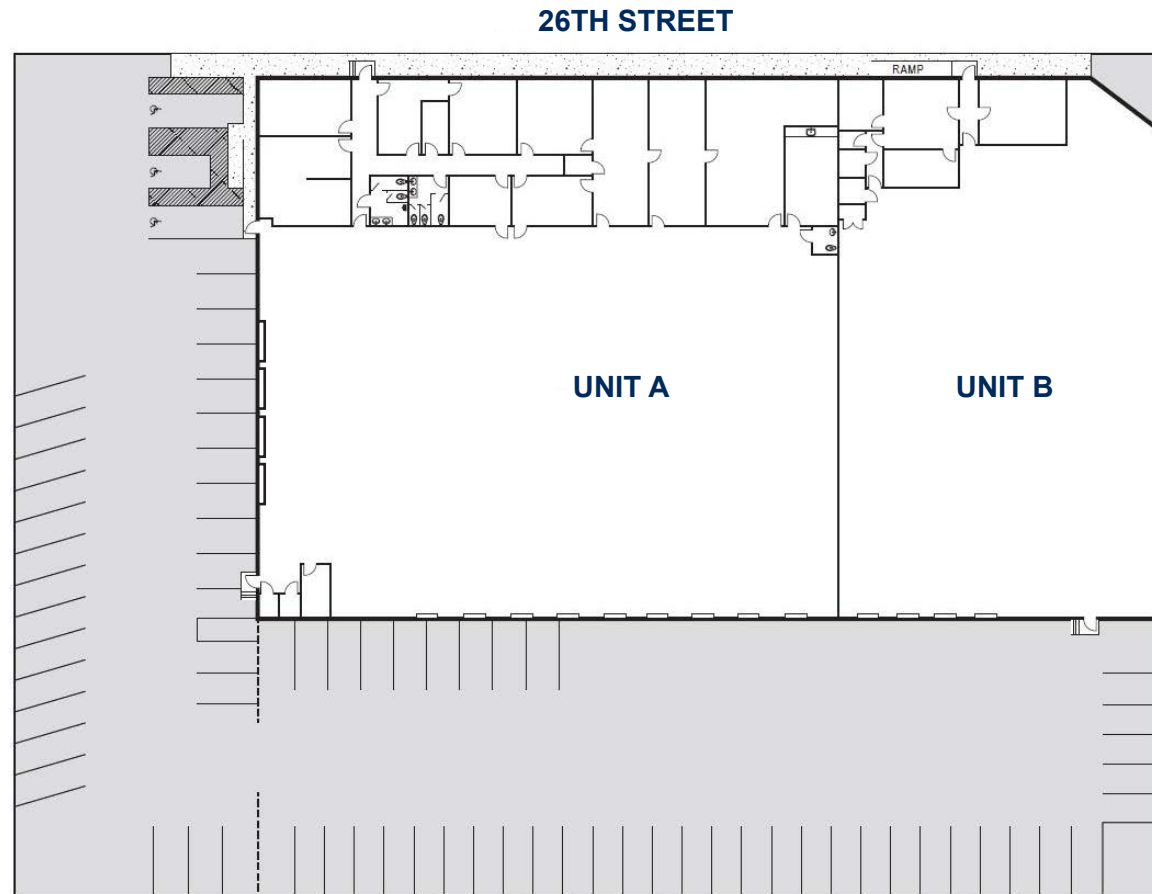
MOON LIM
EXECUTIVE | V.P.
P: 213.270.2256
MLIM@DAUMCRE.COM
CADRE #01903050

RYAN JUDD
ASSOCIATE
P: 213.270.2220
RJUDD@DAUMCRE.COM
CADRE #01992275



FOR LEASE OR SALE 40,129 SF AVAILABLE

SITE PLAN



*NOT TO SCALE

2640
E. 26TH STREET
VERNON | CA 90058

FOR MORE INFORMATION, CONTACT:

ANTHONY BERGEMAN, SIOR
EXECUTIVE | V. P.
P: 949.341.4511
ABERGEMAN@DAUMCRE.COM
CADRE #01841828

MICHAEL CHASE
VICE PRESIDENT
P: 949.341.4513
MCHASE@DAUMCRE.COM
CADRE #02071146

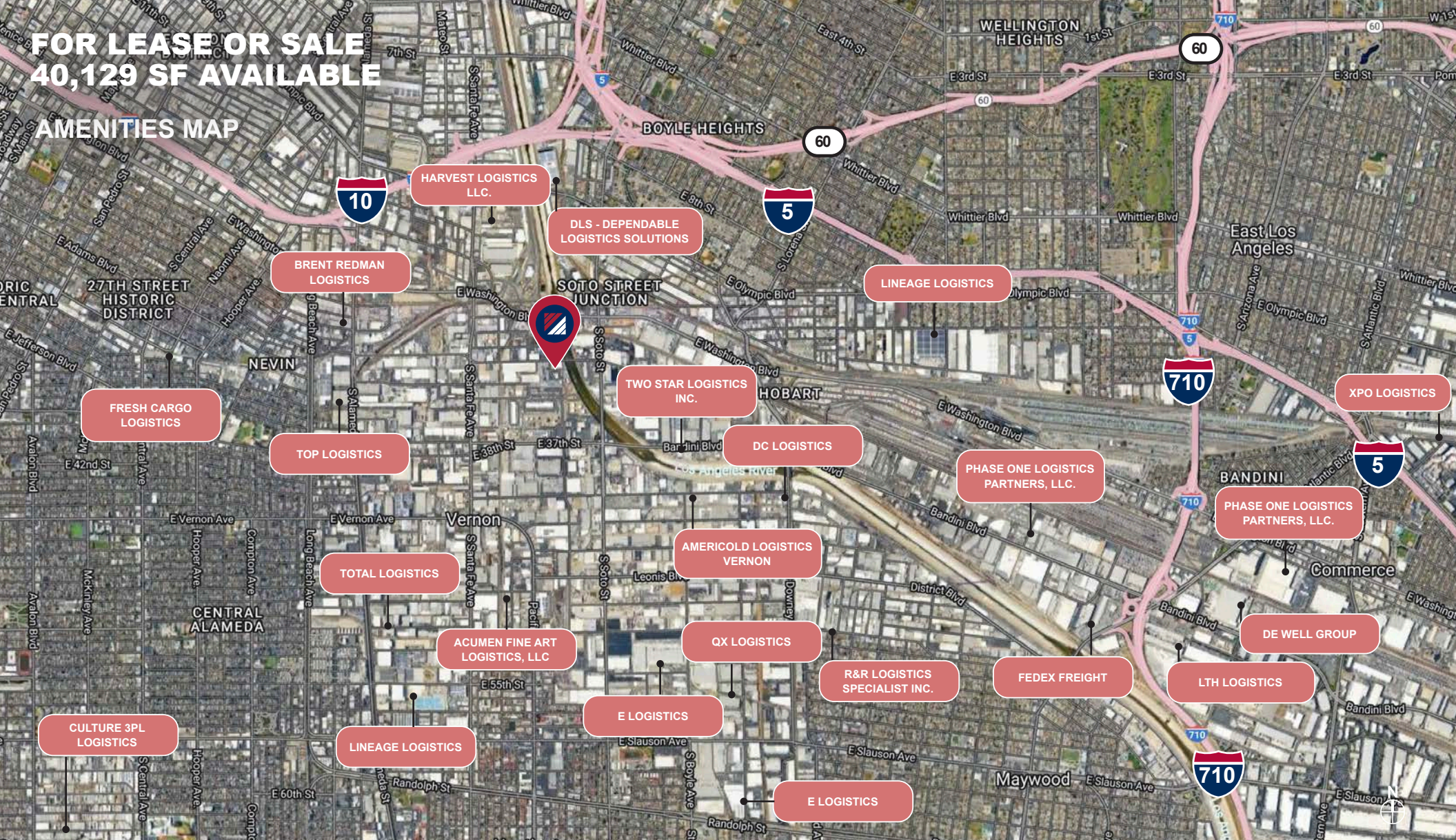
MOON LIM
EXECUTIVE | V.P.
P: 213.270.2256
MLIM@DAUMCRE.COM
CADRE #01903050

RYAN JUDD
ASSOCIATE
P: 213.270.2220
RJUDD@DAUMCRE.COM
CADRE #01992275

DAUM
COMMERCIAL REAL ESTATE SERVICES

FOR LEASE OR SALE
40,129 SF AVAILABLE

AMENITIES MAP



2640
E. 26TH STREET
VERNON | CA 90058

FOR MORE INFORMATION, CONTACT:

ANTHONY BERGEMAN, SIOR
EXECUTIVE | V. P.
P: 949.341.4511
ABERGEMAN@DAUMCRE.COM
CADRE #01841828

MICHAEL CHASE
VICE PRESIDENT
P: 949.341.4513
MCHASE@DAUMCRE.COM
CADRE #02071146

MOON LIM
EXECUTIVE | V.P.
P: 213.270.2256
MLIM@DAUMCRE.COM
CADRE #01903050

RYAN JUDD
ASSOCIATE
P: 213.270.2220
RJUDD@DAUMCRE.COM
CADRE #01992275

DAUM
COMMERCIAL REAL ESTATE SERVICES

FOR LEASE OR SALE 40,129 SF AVAILABLE

LOCATION MAP



 CA-10
1.7 miles

 CA-710
3.4 miles

 CA-110
3.6 miles



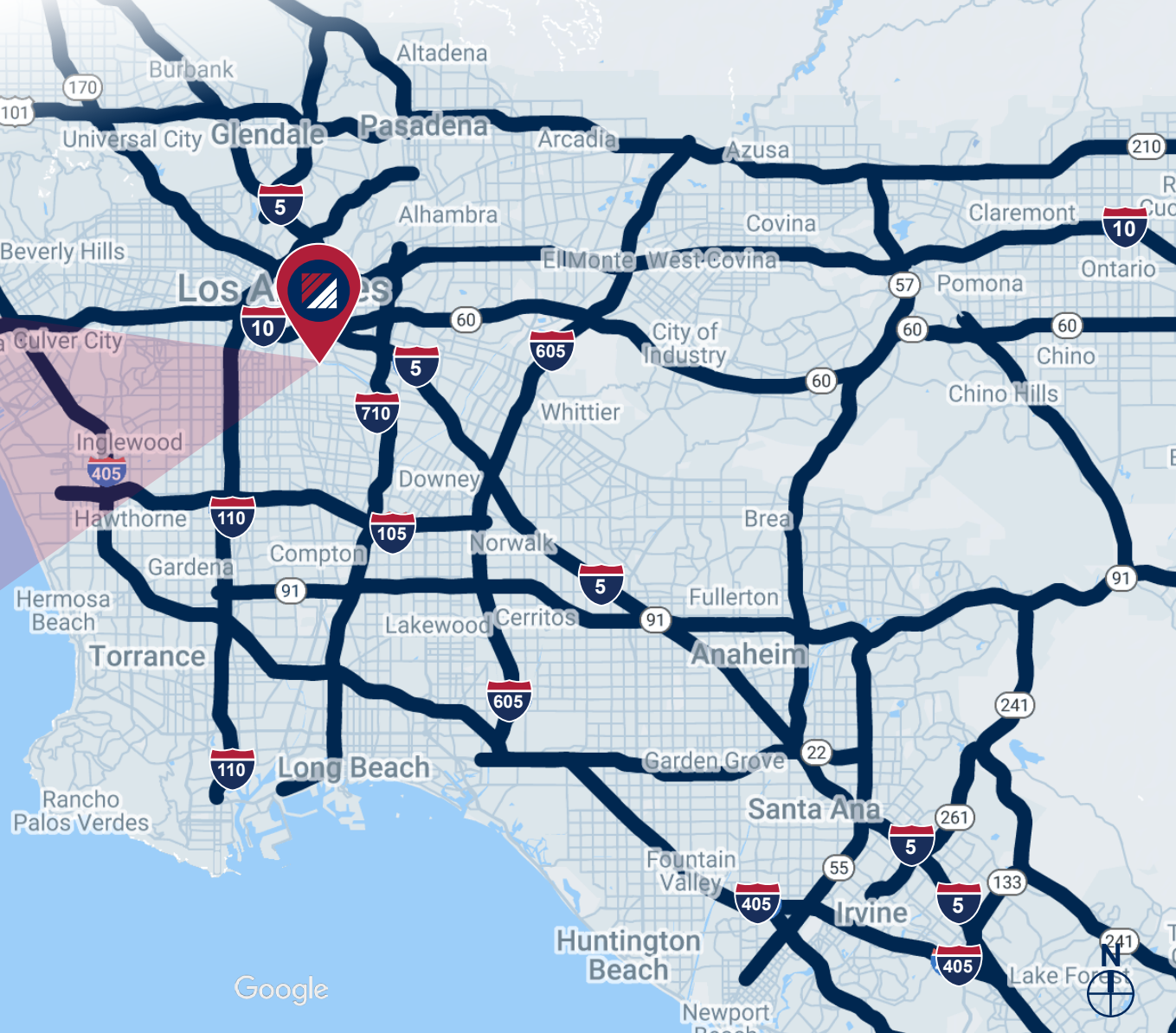
Port of Long Beach
22.4 miles



Port of Los Angeles
24.7 miles



LAX Airport
18 miles



Google

2640
E. 26TH STREET
VERNON | CA 90058

FOR MORE INFORMATION, CONTACT:

ANTHONY BERGEMAN, SIOR
EXECUTIVE | V. P.
P: 949.341.4511
ABERGEMAN@DAUMCRE.COM
CADRE #01841828

MICHAEL CHASE
VICE PRESIDENT
P: 949.341.4513
MCHASE@DAUMCRE.COM
CADRE #02071146

MOON LIM
EXECUTIVE | V.P.
P: 213.270.2256
MLIM@DAUMCRE.COM
CADRE #01903050

RYAN JUDD
ASSOCIATE
P: 213.270.2220
RJUDD@DAUMCRE.COM
CADRE #01992275


COMMERCIAL REAL ESTATE SERVICES