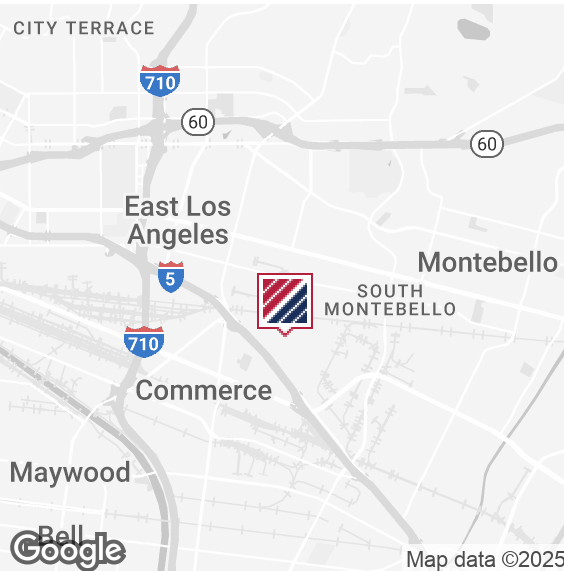




5780

SMITHWAY ST
COMMERCE | CA



FOR LEASE

OVERFLOW WAREHOUSE SPACE



12,500 SF
AVAILABLE



FLEXIBLE
LEASE TERMS



24 ft
CLEAR HEIGHT



2
DOCK HIGH DOORS

PROPERTY HIGHLIGHTS

- Approximately 12,500 SF
- 2 Dock High Doors
- Adjacent to Citadel Outlets
- \$1.16 PSF Gross
- Immediate 5 Freeway Access
- Racking Included
- Excellent Overflow/ Shared Warehouse Space
- Flexible Lease Term
- Sprinklered

FOR MORE INFORMATION PLEASE CONTACT:

ZACH BOEBEL

ASSOCIATE VICE PRESIDENT

P: 213.270.2213 | M: 661.904.8057

zboebel@daumcommercial.com

CADRE #02004825

IAN GROSSMAN

ASSOCIATE VICE PRESIDENT

P: 213.270.2219 | M: 914.610.5398

igrossman@daumcommercial.com

CADRE #02179242

Although all information is furnished regarding for sale, rental or financing is from sources deemed reliable, such information has not been verified and no express representation is made nor is any to be implied as to the accuracy thereof, and it is submitted subject to errors, omissions, changes of price, rental or other conditions, prior sale, lease or financing, or withdrawal without notice.

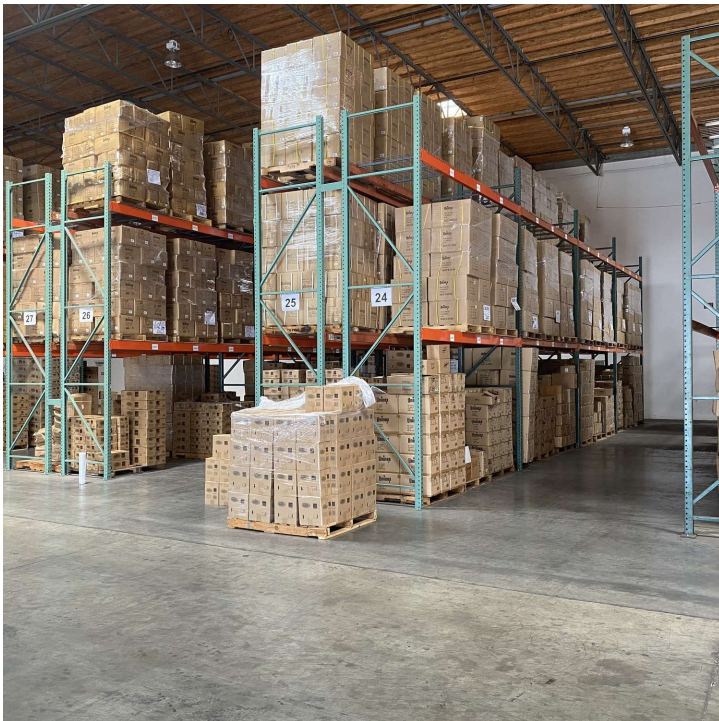
DAUM
COMMERCIAL REAL ESTATE SERVICES

5780

SMITHWAY ST
COMMERCE | CA

FOR LEASE

INDUSTRIAL PROPERTY



Although all information is furnished regarding for sale, rental or financing is from sources deemed reliable, such information has not been verified and no express representation is made nor is any to be implied as to the accuracy thereof, and it is submitted subject to errors, omissions, changes of price, rental or other conditions, prior sale, lease or financing, or withdrawal without notice.

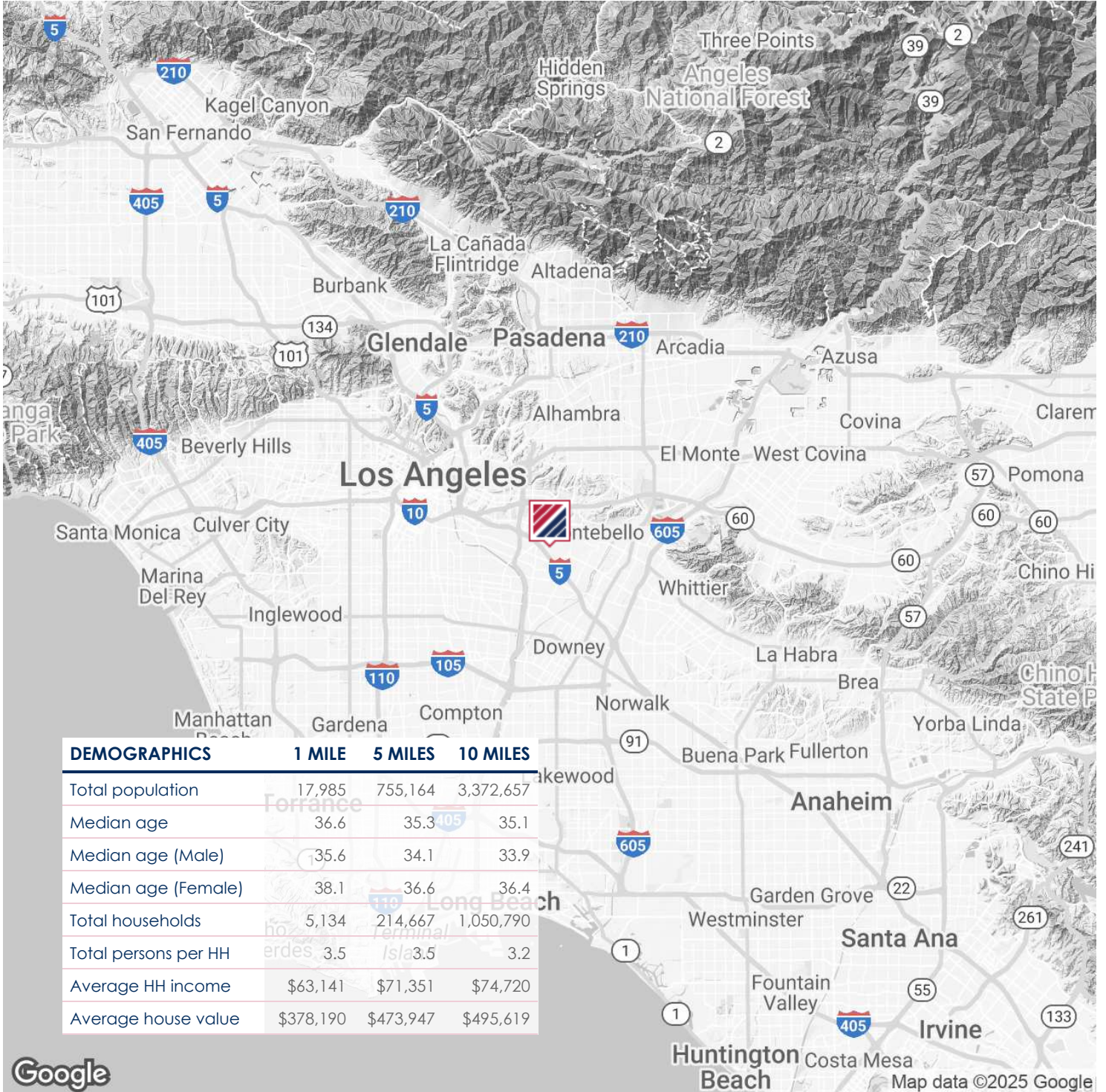


5780

SMITHWAY STREET
COMMERCE | CA

FOR LEASE

STORAGE PROPERTY



Although all information is furnished regarding for sale, rental or financing is from sources deemed reliable, such information has not been verified and no express representation is made nor is any to be implied as to the accuracy thereof, and it is submitted subject to errors, omissions, changes of price, rental or other conditions, prior sale, lease or financing, or withdrawal without notice.

