

LIGHT INDUSTRIAL ZONING

776
S. LUGO AVE.
SAN BERNARDINO | CA

FOR SALE



± 1 ACRE



FOR MORE INFORMATION
PLEASE CONTACT:

JUAN COVARRUBIAS
EXECUTIVE VICE PRESIDENT
P: 909.652.2055 | M: 909.652.9055
JUAN.COVARRUBIAS@DAUMCOMMERCIAL.COM
CADRE #01945028

GUS ANDROS, SIOR
EXECUTIVE VICE PRESIDENT
P: 909.912.0003 | M: 949.533.3829
GUS.ANDROS@DAUMCOMMERCIAL.COM
CADRE #01010235

DAUM
COMMERCIAL REAL ESTATE SERVICES

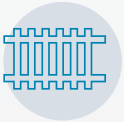
Although all information is furnished regarding for sale, rental or financing is from sources deemed reliable, such information has not been verified and no express representation is made nor is any to be implied as to the accuracy thereof, and it is submitted subject to errors, omissions, changes of price, rental or other conditions, prior sale, lease or financing, or withdrawal without notice. D/AQ Corp. # 01129558

PROPERTY HIGHLIGHTS

PARCEL MAP



Zoning IL (Light Industrial)



Fenced and secured yard

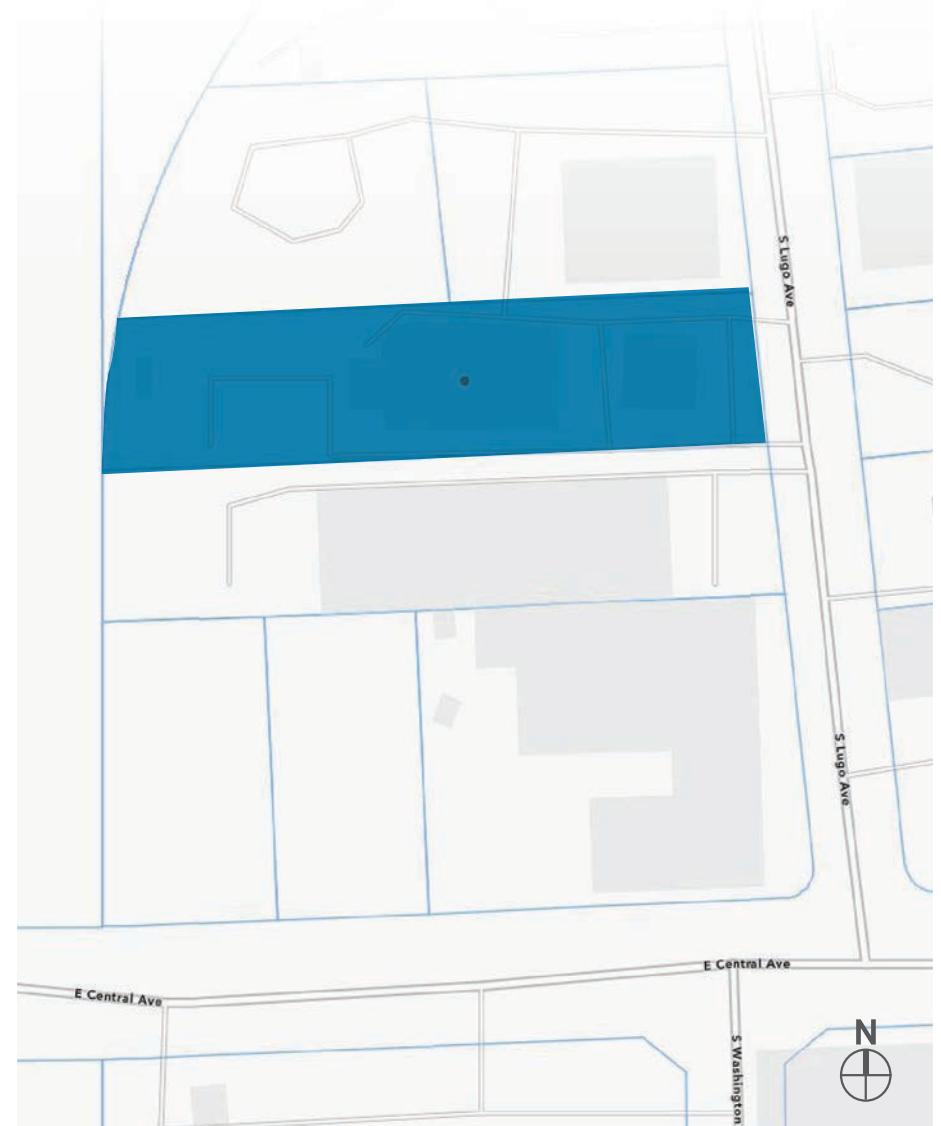


Immediate Access to 1-10 & 215 Freeways

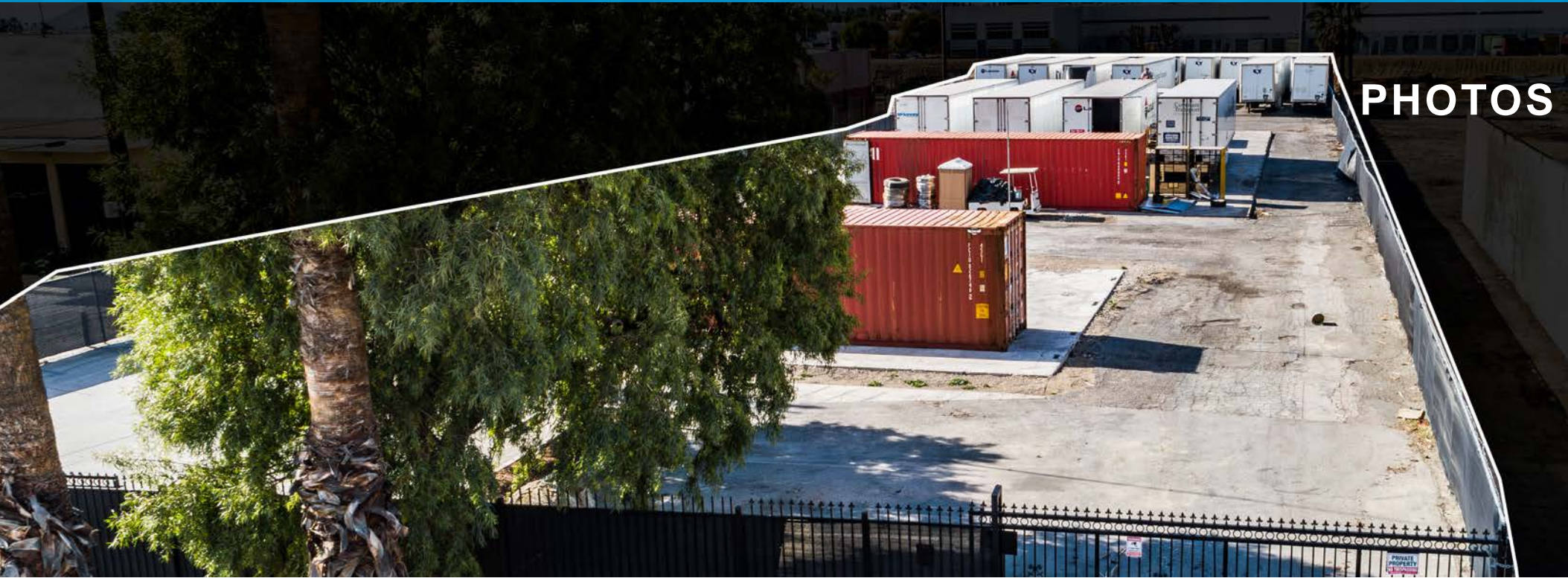


Uses with Administrative or Development Permit include:

- Contractors Storage, Lumber, and Rental Yards
- Storage for Building Supplies
- Self-Storage Mini Storage
- Towing Services
- Parking Lots
- Transportation and Distribution
- Please Confirm Use with the City of San Bernardino



PHOTOS

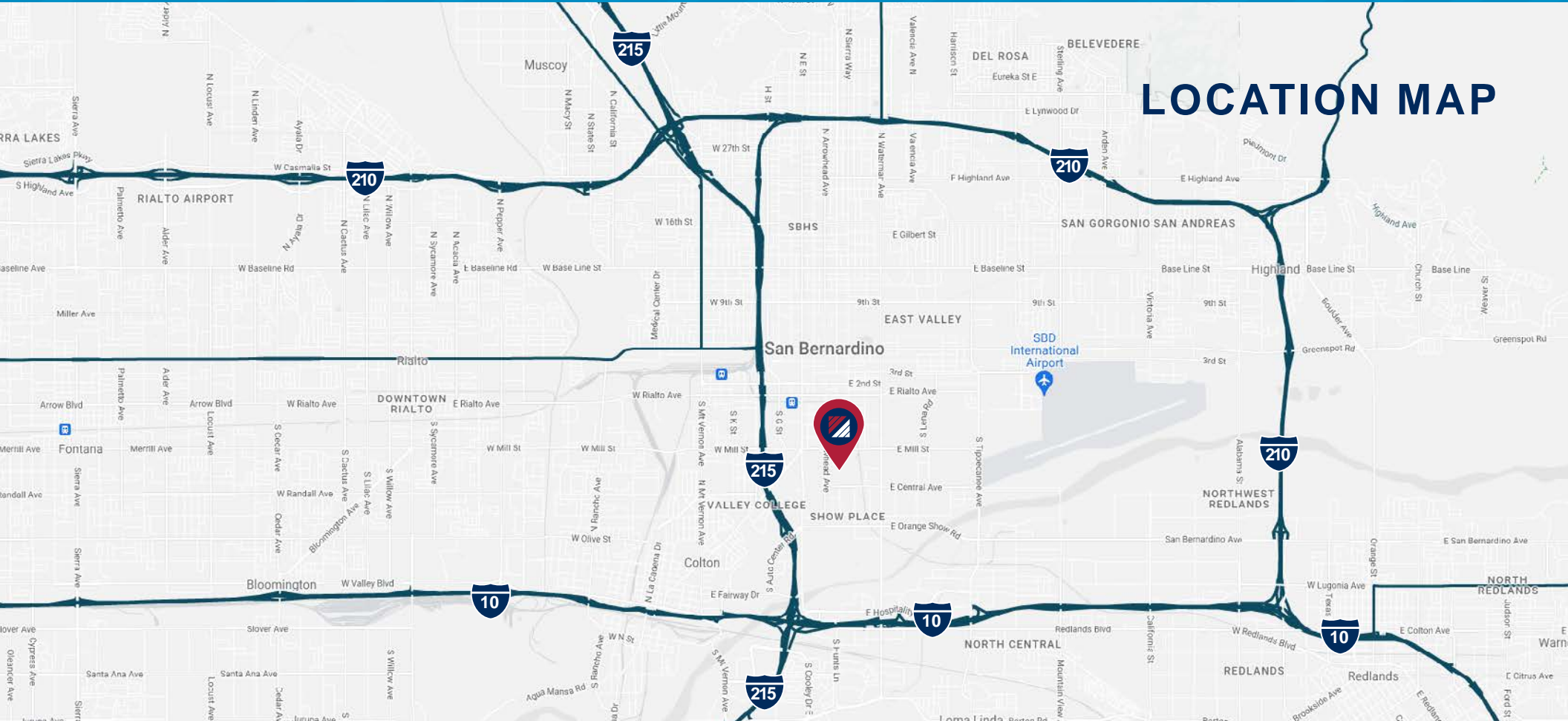


3

FOR SALE 776 S LUGO AVE. | SAN BERNARDINO | CA 92408

DAUM
COMMERCIAL REAL ESTATE SERVICES

LOCATION MAP



DESTINATIONS	DISTANCE
Ontario	22 Mi.
City of Industry	44 Mi.
Downtown Los Angeles	60 Mi.
SBD International Airport	3.2 Mi.
Los Angeles Intl. Airport	76 Mi.
Port of Los Angeles	75 Mi.
Port of Long Beach	74 Mi.

DEMOGRAPHICS	3 MI.	5 MI.	10 MI.
2010 Population	117,513	314,074	836,878
2023 Population	126,293	338,488	900,776
2028 Population Projection	127,660	342,330	908,967
Avg Household Income	\$59,399	\$67,726	\$82,008
Median Household Income	\$43,766	\$52,738	\$64,860
Total Specified Consumer Spending (\$)	\$959.5M	\$2.9B	\$8.6B

AMENITIES MAP

