

1.05 ACRE YARD WITH APPROX. 5,068 SQ.FT OF BUILDING

FOR LEASE

1.05 AC (45,738 SF)

14815 S. AVALON BLVD.
GARDENA | CA
UNINCORPORATED LA. COUNTY

PROPERTY HIGHLIGHTS



45,738 SF
lot size



1.05 AC
lot size



3,684 SF
warehouse space



1,384 SF
office space



Fenced
secured yard



Paved
with perimeter lights



FOR MORE INFORMATION, CONTACT:

BRAD LEVIN
E.V.P. / PRINCIPAL
P: 310.538.6728
blevin@daumcre.com
CADRE #01020885

NOAH TSAI
ASSOCIATE
P: 310.538.6715
ntsai@daumcre.com
CA DRE #02193361

JACK STONE
ASSOCIATE
P: 310.538.6722
jstone@daumcre.com
CA DRE #02070402


COMMERCIAL REAL ESTATE SERVICES

FOR LEASE

1.05 AC (45,738 SF)

14815 S. AVALON BLVD.
GARDENA | CA
UNINCORPORATED LA. COUNTY

AVAILABLE SF

45,738 SF lot

ACRES

1.05 AC

ZONE

LCM2

USAGE

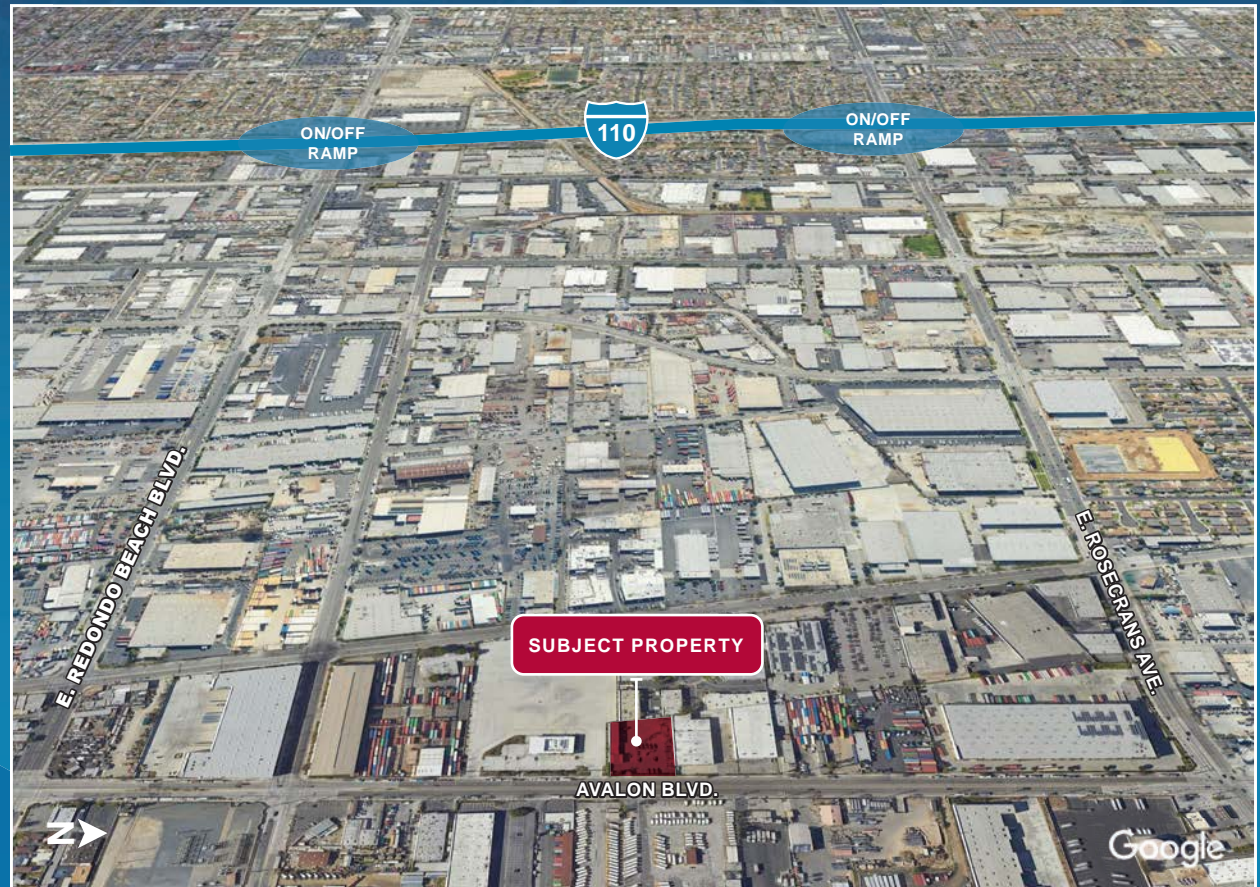
Industrial

APN

6137-002-016

PROPERTY SPECIFICATIONS

- 1.05 AC
- 1,384 SF Office Space
- 3,684 SF Warehouse
- Great Truck/Container/Fleet Yard/
Equipment Rental Yard
- Unincorporated LA County Zoning
- Fenced Secure Yard - Paved with
Perimeter Lights
- LCM2 Zoning
- 2 Fuel Pumps Serviced by 8,000 Gallon
Underground Fuel Tank
- Lease Rate: \$.89 Gross
- Not in Green Zone



FOR LEASE

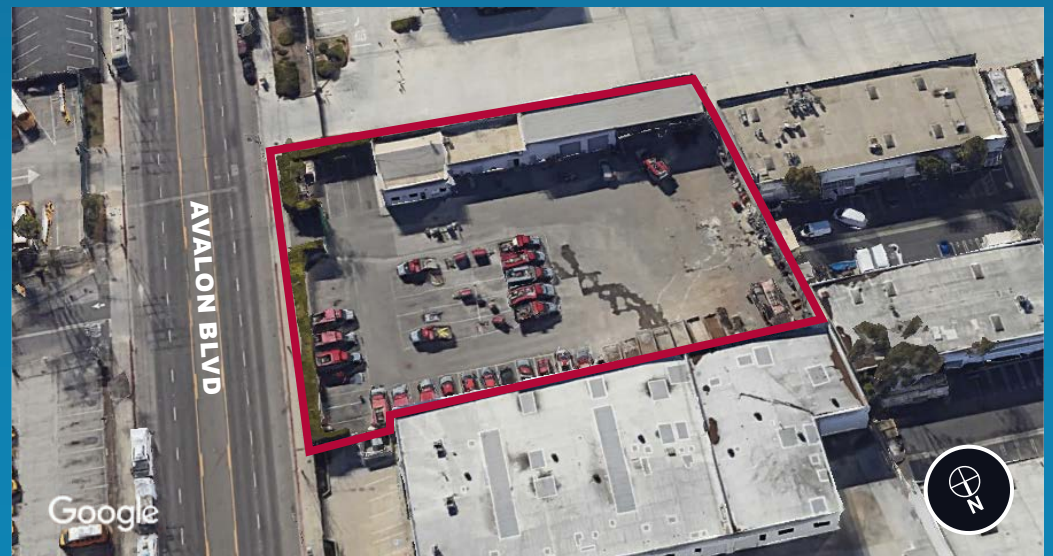
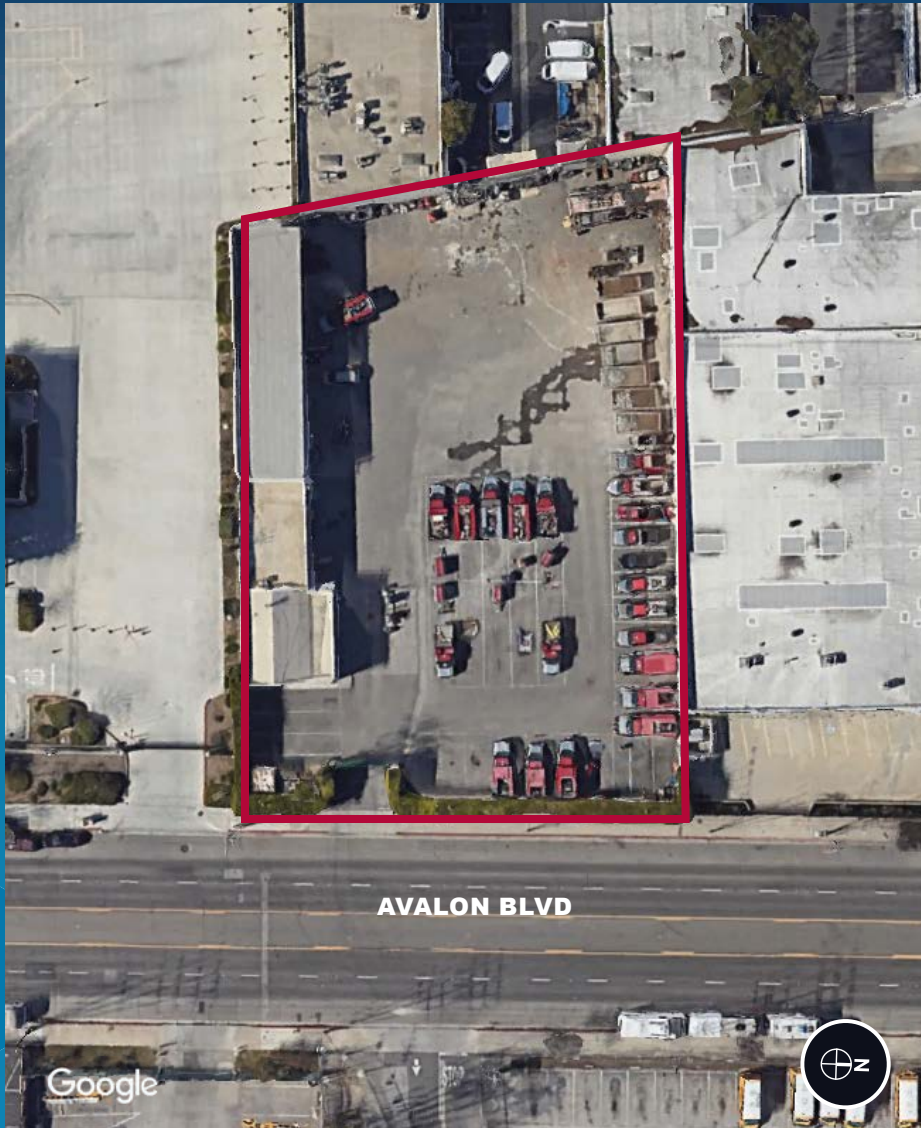
1.05 AC (45,738 SF)

14815 S. AVALON BLVD.

GARDENA | CA

UNINCORPORATED LA. COUNTY

AERIALS



FOR LEASE

1.05 AC (45,738 SF)

14815 S. AVALON BLVD.
GARDENA | CA
UNINCORPORATED LA. COUNTY

AMENITIES MAP

