



2211

MICHELSON
IRVINE | CA



"PLUG & PLAY"

SUBLEASE OPPORTUNITY - SUITE 750: 4,673 RSF

PROPERTY HIGHLIGHTS

- Plug & Play Space
- Fully Furnished
- Wired with CAT 6
- Elevator Lobby Identity
- Newly Completed
- Flexible Lease Term
- Walking Distance to Restaurants, Hotels, & John Wayne Airport
- Structured Parking

FOR MORE INFORMATION PLEASE CONTACT:

BRIAN DONER
EXECUTIVE VICE PRESIDENT

P: 714.941.5324

brian.doner@daumcommercial.com

CABRE #00879662

Although all information is furnished regarding for sale, rental or financing is from sources deemed reliable, such information has not been verified and no express representation is made nor is any to be implied as to the accuracy thereof, and it is submitted subject to errors, omissions, changes of price, rental or other conditions, prior sale, lease or financing, or withdrawal without notice.

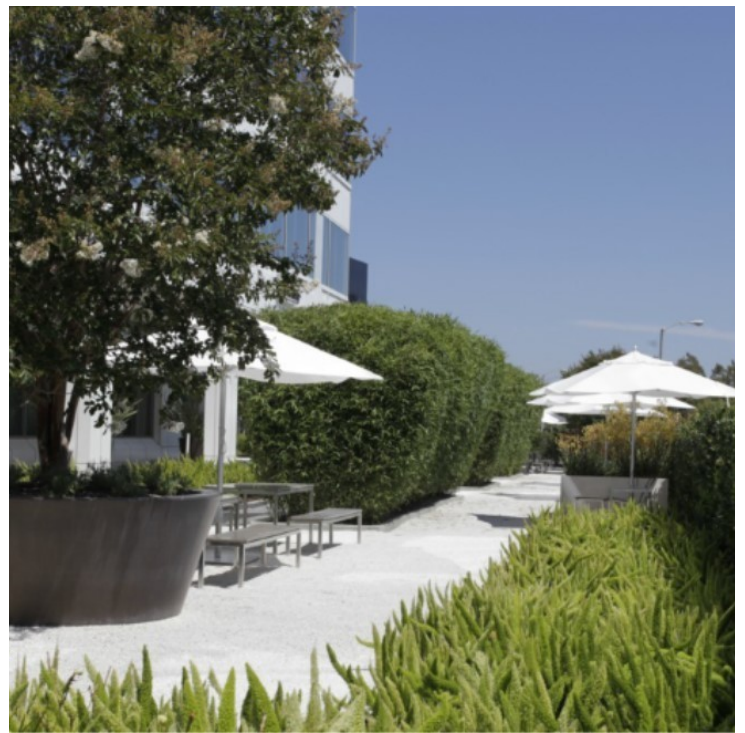
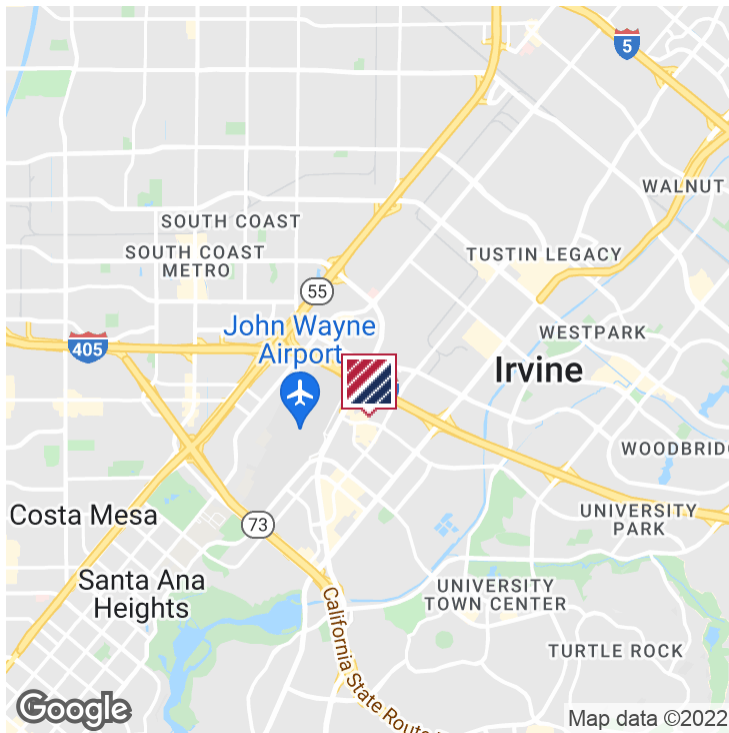
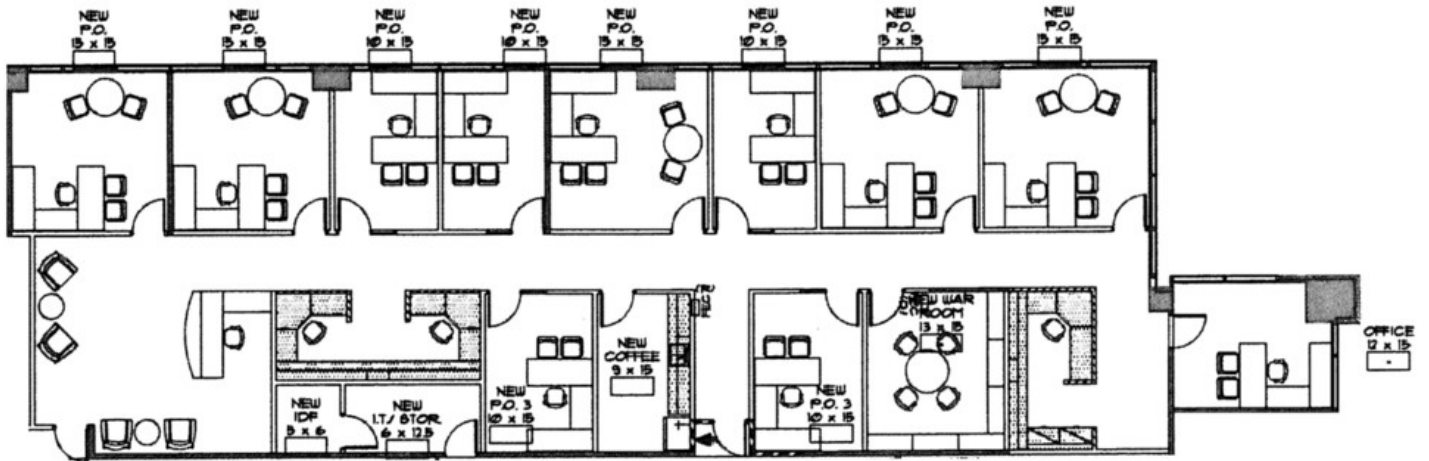
DAUM
COMMERCIAL REAL ESTATE SERVICES

2211

MICHELSON
IRVINE | CA

FOR SUBLEASE

SUITE 750 - 4,673 SF



Although all information is furnished regarding for sale, rental or financing is from sources deemed reliable, such information has not been verified and no express representation is made nor is any to be implied as to the accuracy thereof, and it is submitted subject to errors, omissions, changes of price, rental or other conditions, prior sale, lease or financing, or withdrawal without notice.

