

LEASE RATE: \$1.35 PSF GROSS

±3,382 SF & ±6,250 SF HIGH IMAGE CREATIVE OFFICE

FOR LEASE 15412 ELECTRONIC LANE, SUITE 201 & 205 HUNTINGTON BEACH | CA



SUITE 205 3,382 SF
SUITE 201 6,250 SF



4:1,000
PARKING RATIO



RETAIL
AMENITIES
NEARBY



405 FWY
ACCESS

FOR MORE INFORMATION, CONTACT US:



MIKE BARREIRO
E.V.P. | PRINCIPAL
P: 949.355.8500
mbarreiro@daumcre.com
CA DRE License #01712620



DEVIN RAY
VICE PRESIDENT
M: 714.322.1252
dray@daumcre.com
CA DRE License #02018130



DOUGLAS A. CLAMAN
FOUNDER & MANAGING PRINCIPAL
P: 424.288.7072
daclam@jaadpartners.com
CA DRE License #01871655



COMMERCIAL REAL ESTATE SERVICES

±3,382 SF & ±6,250 SF HIGH IMAGE CREATIVE OFFICE

±9,632 SF
FREESTANDING
HIGH IMAGE

15412 ELECTRONIC LANE
HUNTINGTON BEACH | CA

FOR LEASE

ABOUT
THE
PROPERTY

PROPERTY HIGHLIGHTS

- Part of a Larger 45,000 SF High Image Flex Facility
- ±9,632 SF of 2nd Story Office
 - * Suite 201 - 6,250 SF
 - * Suite 205 - 3,382 SF
- Free Surface Parking
- 4 / 1,000 SF Parking Ratio
- Creative Improvements Available
- Double Door Entries
- Retail Amenities Nearby
- Convenient 405 Freeway Access

Suite 201 - 6,250 SF

- Reception Area
- Large Bullpen
- Lunch Room
- Eleven (11) Perimeter Offices
- Storage/IT Room

Suite 205 - 3,382 SF

- Shell Condition
- TI's to Suit

DAUM
COMMERCIAL REAL ESTATE SERVICES

Electronic Ln

ELECTRONIC LANE



Google



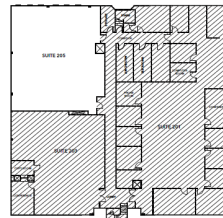
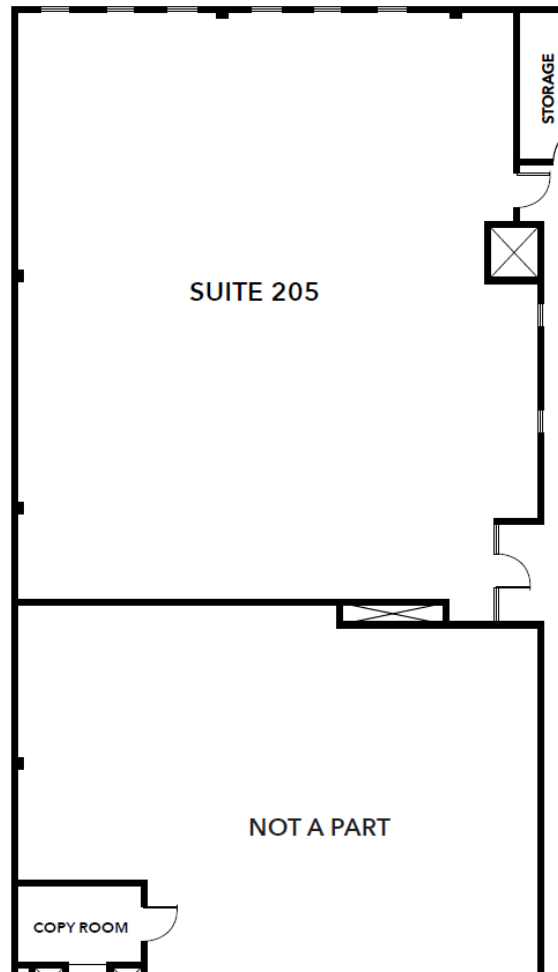
±9,632 SF
FREESTANDING
HIGH IMAGE

15412 ELECTRONIC LANE
HUNTINGTON BEACH | CA

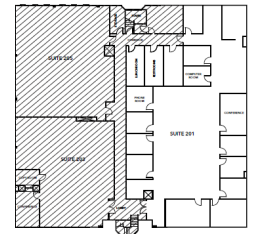
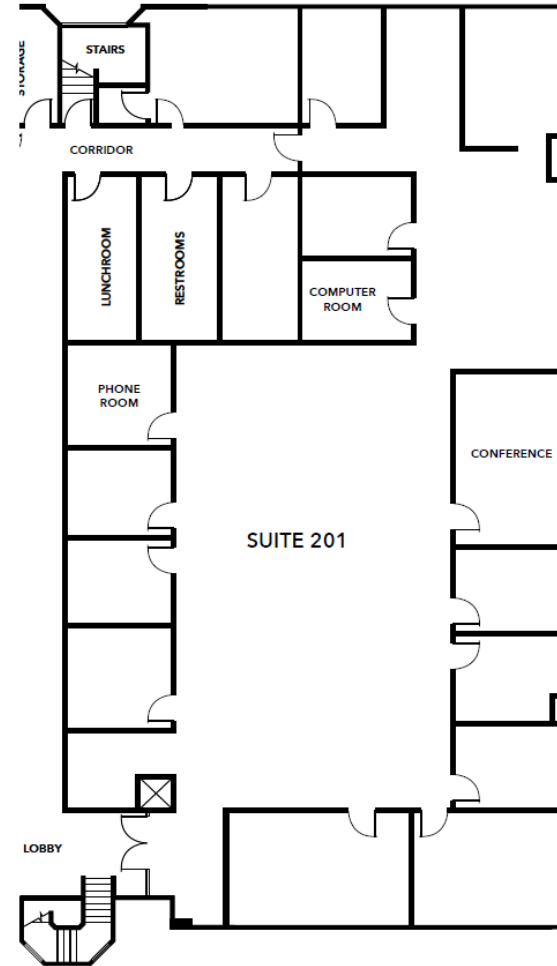
FOR LEASE

FLOOR PLANS

SUITE 205: 3,382 SF



SUITE 201: 6,250 SF



FOR MORE
INFORMATION,
CONTACT US:



MIKE BARREIRO
E.V.P. | PRINCIPAL
P: 949.355.8500
mbarreiro@daumcre.com
CA DRE License #01712620



DEVIN RAY
VICE PRESIDENT
M: 714.322.1252
dray@daumcre.com
CA DRE License #02018130



DOUGLAS A. CLAMAN
FOUNDER & MANAGING PRINCIPAL
P: 424.288.7072
daclaman@jaadpartners.com
CA DRE License #01871655



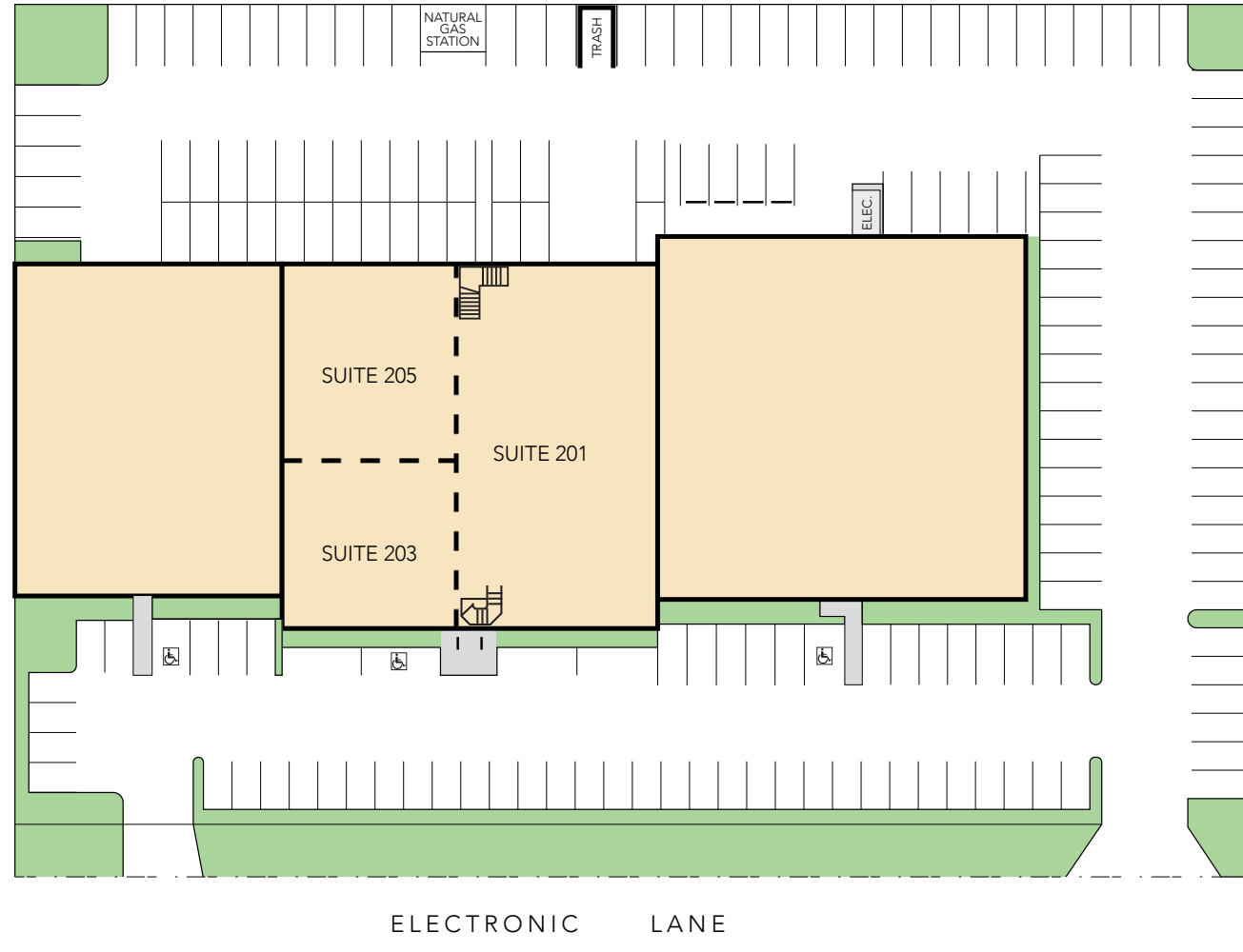
DAUM
COMMERCIAL REAL ESTATE SERVICES

±9,632 SF
FREESTANDING
HIGH IMAGE

SITE PLAN

15412 ELECTRONIC LANE
HUNTINGTON BEACH | CA

FOR LEASE



FOR MORE
INFORMATION,
CONTACT US:



MIKE BARREIRO
E.V.P. | PRINCIPAL
P: 949.355.8500
mbarreiro@daumcre.com
CA DRE License #01712620



DEVIN RAY
VICE PRESIDENT
M: 714.322.1252
dray@daumcre.com
CA DRE License #02018130



DOUGLAS A. CLAMAN
FOUNDER & MANAGING PRINCIPAL
P: 424.288.7072
daclaman@jaadpartners.com
CA DRE License #01871655



DAUM
COMMERCIAL REAL ESTATE SERVICES

±9,632 SF
FREESTANDING
HIGH IMAGE

15412 ELECTRONIC LANE
HUNTINGTON BEACH | CA

FOR LEASE



FOR MORE
INFORMATION,
CONTACT US:



MIKE BARREIRO
E.V.P. | PRINCIPAL
P: 949.355.8500
mbarreiro@daumcre.com
CA DRE License #01712620



DEVIN RAY
VICE PRESIDENT
M: 714.322.1252
dray@daumcre.com
CA DRE License #02018130



DOUGLAS A. CLAMAN
FOUNDER & MANAGING PRINCIPAL
P: 424.288.7072
daclaman@jaadpartners.com
CA DRE License #01871655



 **DAUM**
COMMERCIAL REAL ESTATE SERVICES

±9,632 SF
FREESTANDING
HIGH IMAGE

15412 ELECTRONIC LANE
HUNTINGTON BEACH | CA

FOR LEASE



Google



MIKE BARREIRO
E.V.P. | PRINCIPAL
P: 949.355.8500
mbarreiro@daumcre.com
CA DRE License #01712620



DEVIN RAY
VICE PRESIDENT
M: 714.322.1252
dray@daumcre.com
CA DRE License #02018130



DOUGLAS A. CLAMAN
FOUNDER & MANAGING PRINCIPAL
P: 424.288.7072
daclaman@jaadpartners.com
CA DRE License #01871655



DAUM
COMMERCIAL REAL ESTATE SERVICES