

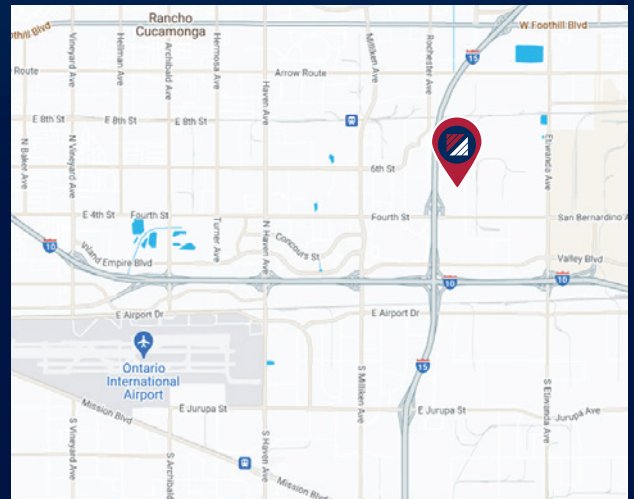


FOR LEASE ±13,000 SF

9160 HYSSOP DRIVE | RANCHO CUCAMONGA, CA

PROPERTY HIGHLIGHTS

- ±13,000 SF Available
- Industrial Flex Space
- I-15 Freeway Visibility
- ±763 SF of Two-Story Office
- 2 Dock Doors
- 1 Ground Level Door
- Dock Platform with 4 Trailer Positions
- Fenced Yard
- 400A / 277- 480V
- Easy Access to I-10, I-15 and 210 Freeways



FOR MORE INFORMATION, PLEASE CONTACT:

NOAH SAMARIN
EVP | PRINCIPAL
P: 909.912.0007 | M: 714.812.1289
noah.samarin@daumcommercial.com
CADRE #01755814

NICK CANTU
ASSOC.VICE PRESIDENT
P: 909.652.9054 | M: 714.787.9454
ncantu@daumcommercial.com
CADRE #02016719



FOR LEASE ±13,000 SF

PROPERTY PHOTOS

9160 HYSSOP DRIVE | RANCHO CUCAMONGA, CA



FOR MORE INFORMATION, PLEASE CONTACT:

NOAH SAMARIN

EVP | PRINCIPAL

P: 909.912.0007 | M: 714.812.1289

noah.samarin@daumcommercial.com

CADRE #01755814

NICK CANTU

ASSOC. VICE PRESIDENT

P: 909.652.9054 | M: 714.787.9454

ncantu@daumcommercial.com

CADRE #02016719

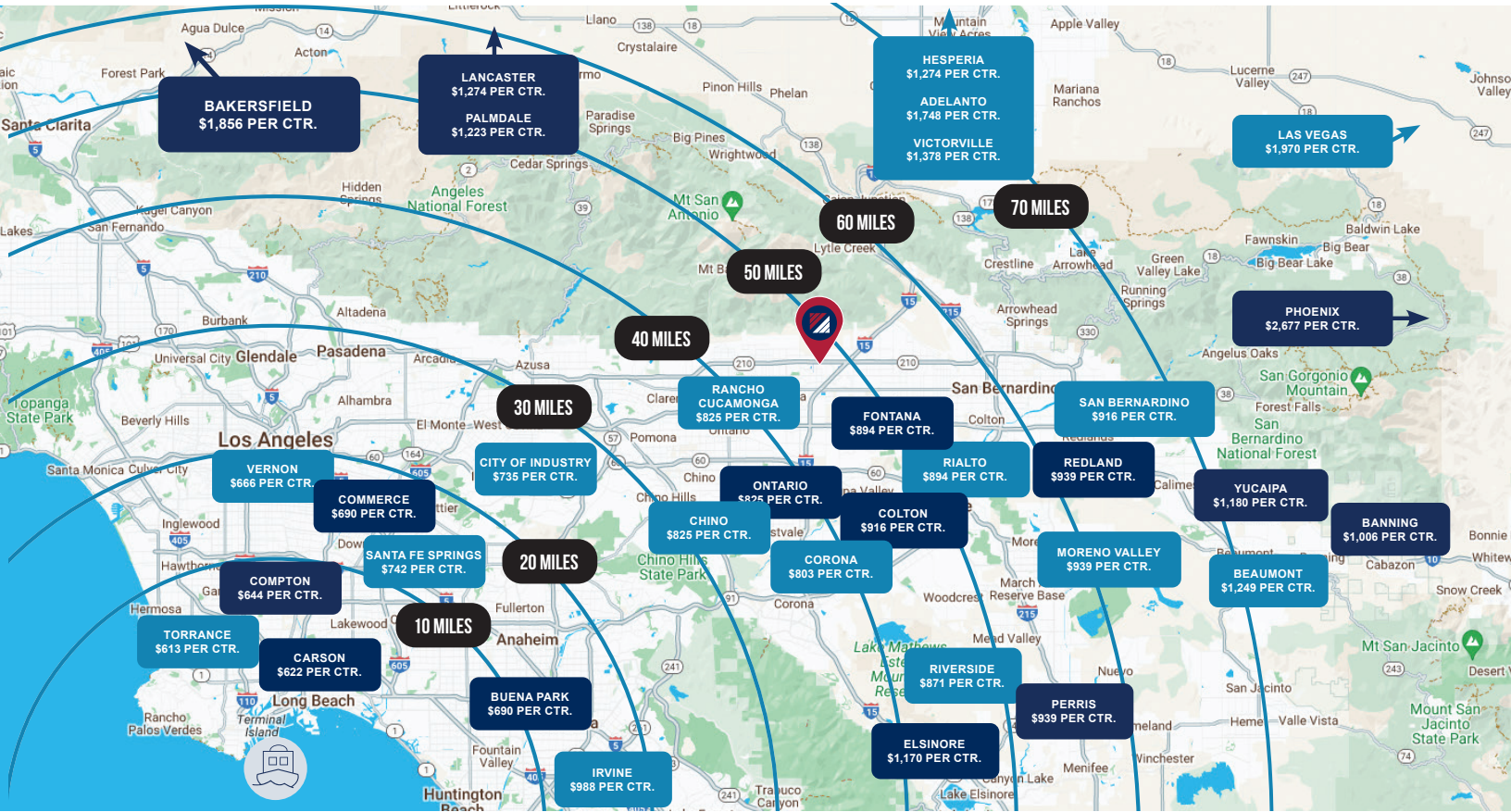


Although all information is furnished regarding for sale, rental or financing from sources deemed reliable, such information has not been verified and no express representation is made nor is any to be implied as to the accuracy thereof, and it is submitted subject to errors, omissions, changes of price, rental or other conditions, prior sale, lease or financing, or withdrawal without notice. All Maps provided courtesy of Google Maps, Bing Maps, and Google Earth. D/AQ Corp. # 01129558

FOR LEASE ±13,000 SF

DRAYAGE & AERIAL MAP

9160 HYSSOP DRIVE | RANCHO CUCAMONGA, CA



FOR MORE INFORMATION, PLEASE CONTACT:

NOAH SAMARIN
EVP | PRINCIPAL
P: 909.912.0007 | M: 714.812.1289
noah.samarin@daumcommercial.com
CADRE #01755814

NICK CANTU
ASSOC. VICE PRESIDENT
P: 909.652.9054 | M: 714.787.9454
ncantu@daumcommercial.com
CADRE #02016719



Although all information is furnished regarding for sale, rental or financing from sources deemed reliable, such information has not been verified and no express representation is made nor is any to be implied as to the accuracy thereof, and it is submitted subject to errors, omissions, changes of price, rental or other conditions, prior sale, lease or financing, or withdrawal without notice. All Maps provided courtesy of Google Maps, Bing Maps, and Google Earth. D/AQ Corp. # 01129558