

AVAILABLE FOR SALE

± 51,151 SF
± 1.17 AC

15444 SLOVER AVE &
10459-10477 SULTANA AVE

FONTANA | CA | 92337

PROPERTY HIGHLIGHTS

- 9,432 SF OF BUILDING IMPROVEMENTS
- CONCRETE/FENCED YARD

FOR MORE INFORMATION, CONTACT:

CHUCK BRILL

Executive Vice President | Principal
P: 310.538.6710 | M: 310.710.3127
chuck.brill@daumcommercial.com
CA DRE License # 00974481

MARK SCHAFER

Executive Vice President
P: 909.652.9052 | M: 949.923.9890
mschafer@daumcommercial.com
CA DRE License # #01902664

Although all information is furnished regarding for sale, rental or financing is from sources deemed reliable, such information has not been verified and no express representation is made nor is any to be implied as to the accuracy thereof, and it is submitted subject to errors, omissions, changes of price, rental or other conditions, prior sale, lease or financing, or withdrawal without notice. All maps courtesy of Google Maps, Bing, and Google Earth. D/AQ Corp. # 01129558

DAUM
COMMERCIAL REAL ESTATE SERVICES

15444 SLOVER AVE & 10459-10477 SULTANA AVE

FONTANA | CA | 92337

AVAILABLE FOR SALE
± 51,151 SF / ± 1.17 AC

PROPERTY HIGHLIGHTS



OVERVIEW

For Sale \$4.156 M – 1.17 Acres

- Includes a ± 5,400 SF Metal Building, 3,060 SF Garage/Office, and a 972 SF Metal Shed
- 9,432 SF Total Improvements and Concrete Fenced Yard



ZONING

Southwest Industrial Park Specific Plan
Freeway Industrial/Commercial District



SPECIFICATIONS

	10544 Slover	10459 Sultana	10477 Sultana	Totals
APNS:	0237-041-10	0237-234-04	0237-243-02	
Building SF	± 9,432			± 9,432
Land Area	± 33,687 SF ± 0.77 AC	± 8,732 SF ± 0.20 AC	± 8,732 SF ± 0.20 AC	± 51,151 SF ± 1.17 AC

FOR MORE INFORMATION, CONTACT:

CHUCK BRILL

Executive Vice President | Principal
P: 310.538.6710 | M: 310.710.3127
chuck.brill@daumcommercial.com
CA DRE License # 00974481

MARK SCHAFER

Executive Vice President
P: 909.652.9052 | M: 949.923.9890
mschafer@daumcommercial.com
CA DRE License # #01902664



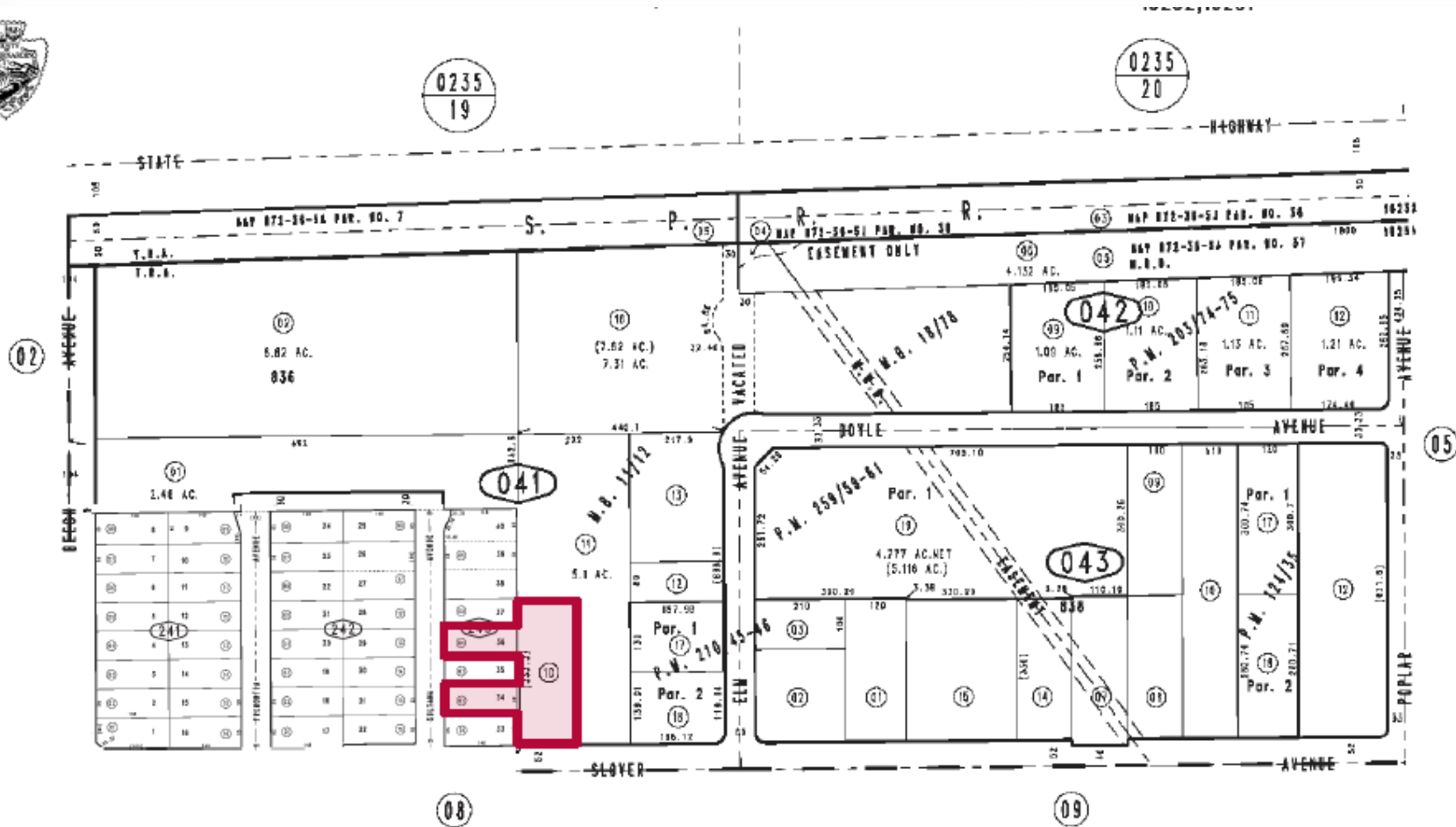
Although all information is furnished regarding for sale, rental or financing is from sources deemed reliable, such information has not been verified and no express representation is made nor is any to be implied as to the accuracy thereof, and it is submitted subject to errors, omissions, changes of price, rental or other conditions, prior sale, lease or financing, or withdrawal without notice. All maps courtesy of Google Maps, Bing, and Google Earth. D/AQ Corp. # 01129558

15444 SLOVER AVE & 10459-10477 SULTANA AVE

FONTANA | CA | 92337

AVAILABLE FOR SALE
± 51,151 SF / ± 1.17 AC

PARCEL MAP



Although all information is furnished regarding sale, rental or financing is from sources deemed reliable, such information has not been verified and no express representation is made nor is any to be implied as to the accuracy thereof, and it is submitted subject to errors, omissions, changes of price, rental or other conditions, prior sale, lease or financing, or withdrawal without notice. All maps courtesy of Google Maps, Bing, and Google Earth. D/AQ Corp. # 01129558

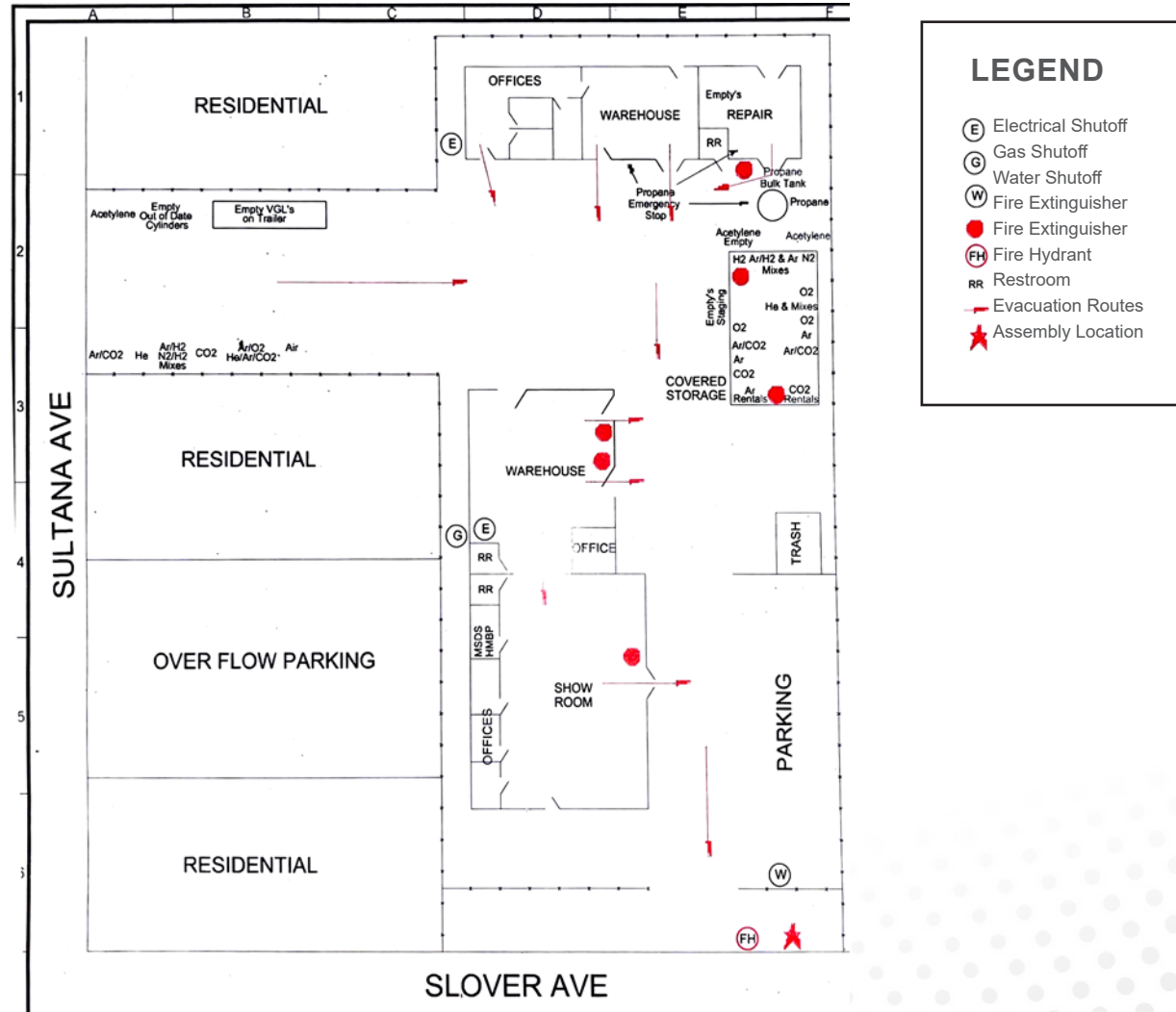


15444 SLOVER AVE & 10459-10477 SULTANA AVE

FONTANA | CA | 92337

AVAILABLE FOR SALE
± 51,151 SF / ± 1.17 AC

SITE PLAN



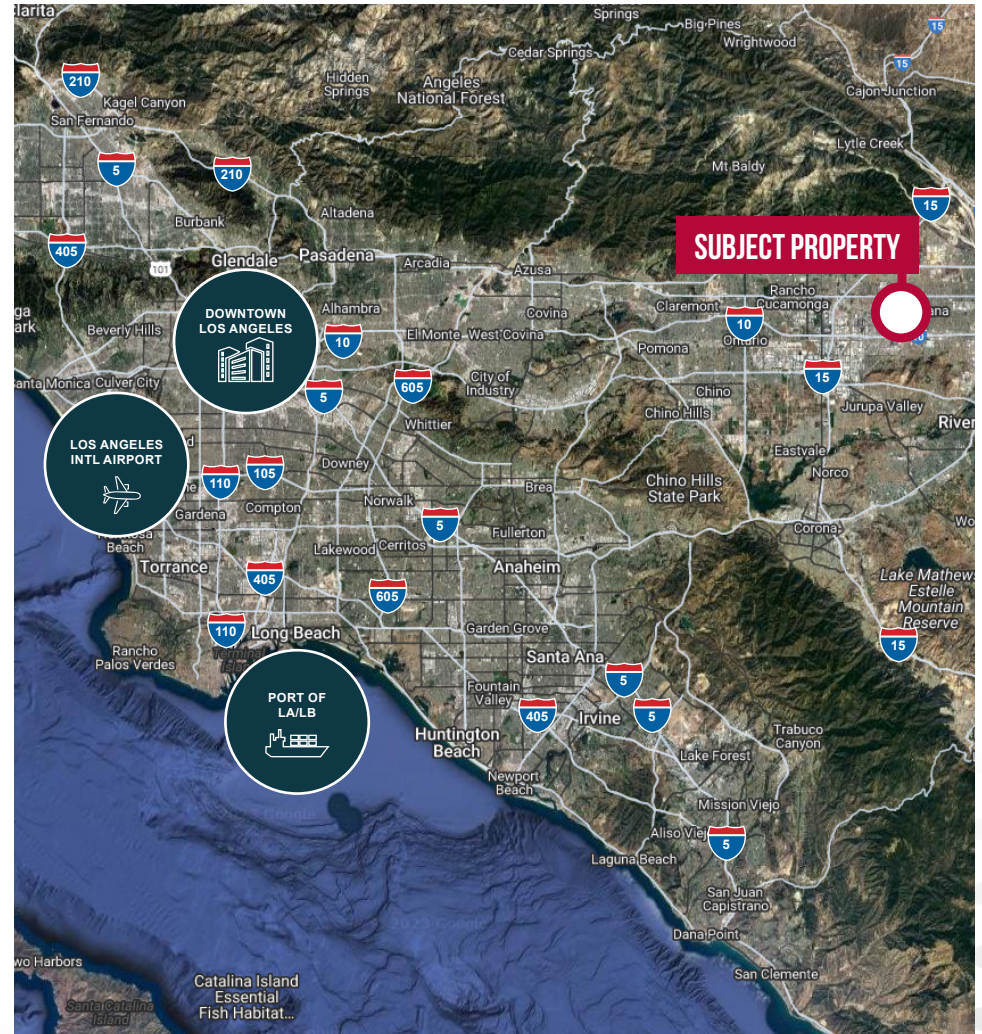
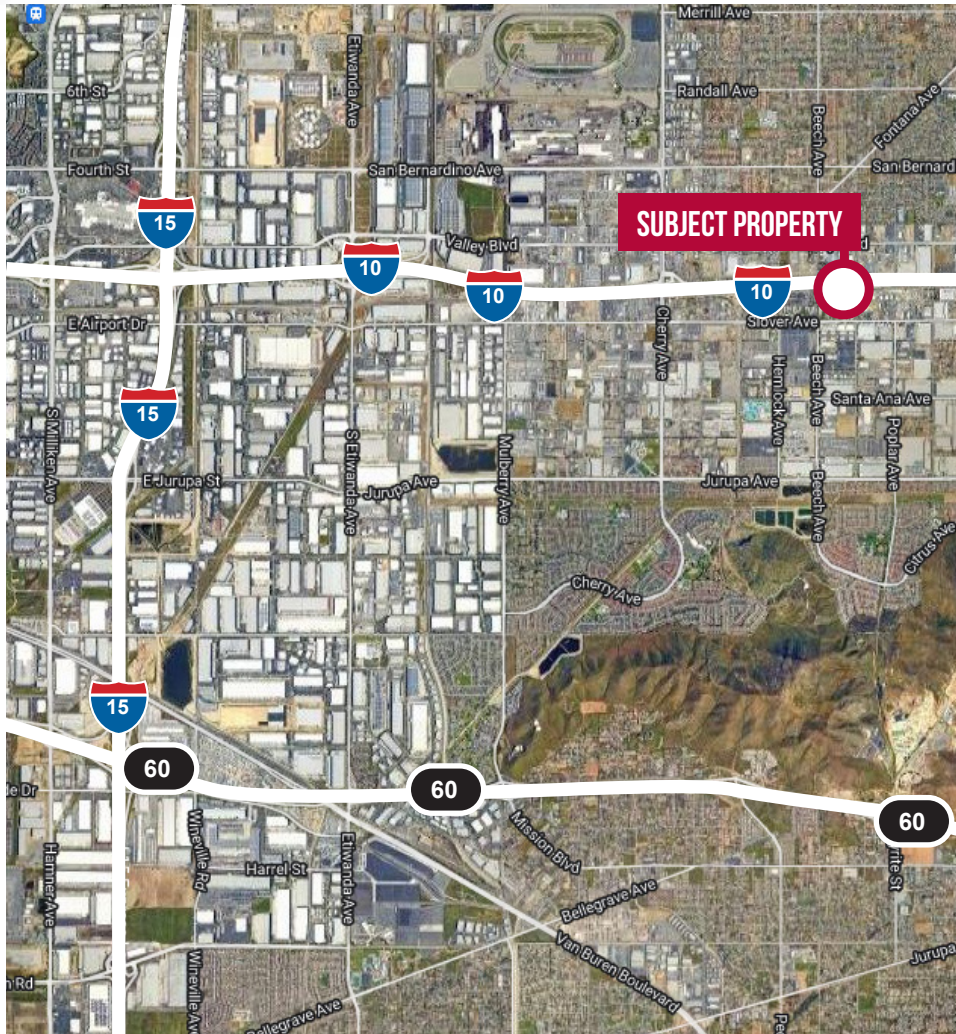
Although all information is furnished regarding for sale, rental or financing is from sources deemed reliable, such information has not been verified and no express representation is made nor is any to be implied as to the accuracy thereof, and it is submitted subject to errors, omissions, changes of price, rental or other conditions, prior sale, lease or financing, or withdrawal without notice. All maps courtesy of Google Maps, Bing, and Google Earth. D/AQ Corp. # 01129558

15444 SLOVER AVE & 10459-10477 SULTANA AVE

FONTANA | CA | 92337

AVAILABLE FOR SALE
± 51,151 SF / ± 1.17 AC

LOCATION MAP



Although all information is furnished regarding for sale, rental or financing is from sources deemed reliable, such information has not been verified and no express representation is made nor is any to be implied as to the accuracy thereof, and it is submitted subject to errors, omissions, changes of price, rental or other conditions, prior sale, lease or financing, or withdrawal without notice. All maps courtesy of Google Maps, Bing, and Google Earth. D/AQ Corp. # 01129558