

±30,360 SF STRUCTURES ON ±3.09 ACRES

FOR LEASE 15567 ARROW ROUTE
FONTANA | CA

DAUM
COMMERCIAL REAL ESTATE SERVICES



FOR MORE INFORMATION, CONTACT:

ERIC BURNEY | SIOR | EXECUTIVE V.P.
P: 909.560.4856
E: eburney@daumcommercial.com
CA DRE # 00697556

JOSH BURNEY | ASSOCIATE
D: 909.912.0015
E: jburney@daumcommercial.com
CA DRE # 02193758

Although all information is furnished regarding for sale, rental or financing is from sources deemed reliable, such information has not been verified and no express representation is made nor is any to be implied as to the accuracy thereof, and it is submitted subject to errors, omissions, changes of price, rental or other conditions, prior sale, lease or financing, or withdrawal without notice. D/AQ Corp. # 01129558

ONCORINTERNATIONAL | www.daumcommercial.com

±30,360 SF STRUCTURES ON ±3.09 ACRES
FOR LEASE 15567 ARROW ROUTE
FONTANA | CA



±20'-22'
Clear Height



Heavy-IR Zoning
County SB
Allows Most Heavy
Uses (Verify)



Power
2,000 AMP 270/480V 3 PHASE Power
(Well distributed)



Secured Entrance
Secured Perimeter Fencing
with Powered Front Entry Gate

STRUCTURES:

- ±18,600 SF Building Footprint
- ±9,300 SF Covered Storage, Air, and Power
- ±2,460 SF of Office Space
- ±30,360 Total SF
- Built by Lord Constructors (Upland, CA)

PROPERTY HIGHLIGHTS

- ± 2,460 SF of Unfinished Mezzanine
- Land area: ±3.09 Acres Gross
- Drive around capability

FOR MORE INFORMATION, CONTACT:

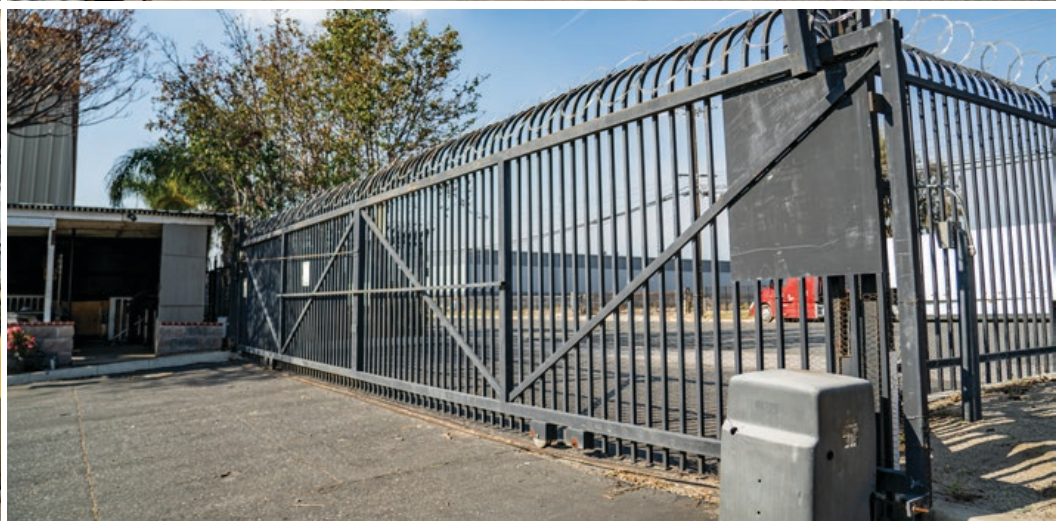
ERIC BURNEY | SIOR | EXECUTIVE V.P.
P: 909.560.4856
E: eburney@daumcommercial.com
CA DRE # 00697556

JOSH BURNEY | ASSOCIATE
D: 909.912.0015
E: jburney@daumcommercial.com
CA DRE # 02193758

Although all information is furnished regarding for sale, rental or financing is from sources deemed reliable, such information has not been verified and no express representation is made nor is any to be implied as to the accuracy thereof, and it is submitted subject to errors, omissions, changes of price, rental or other conditions, prior sale, lease or financing, or withdrawal without notice. D/AQ Corp. # 01129558

±30,360 SF STRUCTURES ON ±3.09 ACRES

FOR LEASE 15567 ARROW ROUTE
FONTANA | CA



FOR MORE INFORMATION, CONTACT:

ERIC BURNEY | SIOR | EXECUTIVE V.P.
P: 909.560.4856
E: eburney@daumcommercial.com
CA DRE # 00697556

JOSH BURNEY | ASSOCIATE
D: 909.912.0015
E: jburney@daumcommercial.com
CA DRE # 02193758

Although all information is furnished regarding for sale, rental or financing is from sources deemed reliable, such information has not been verified and no express representation is made nor is any to be implied as to the accuracy thereof, and it is submitted subject to errors, omissions, changes of price, rental or other conditions, prior sale, lease or financing, or withdrawal without notice. D/AQ Corp. # 01129558

ONCORINTERNATIONAL | www.daumcommercial.com

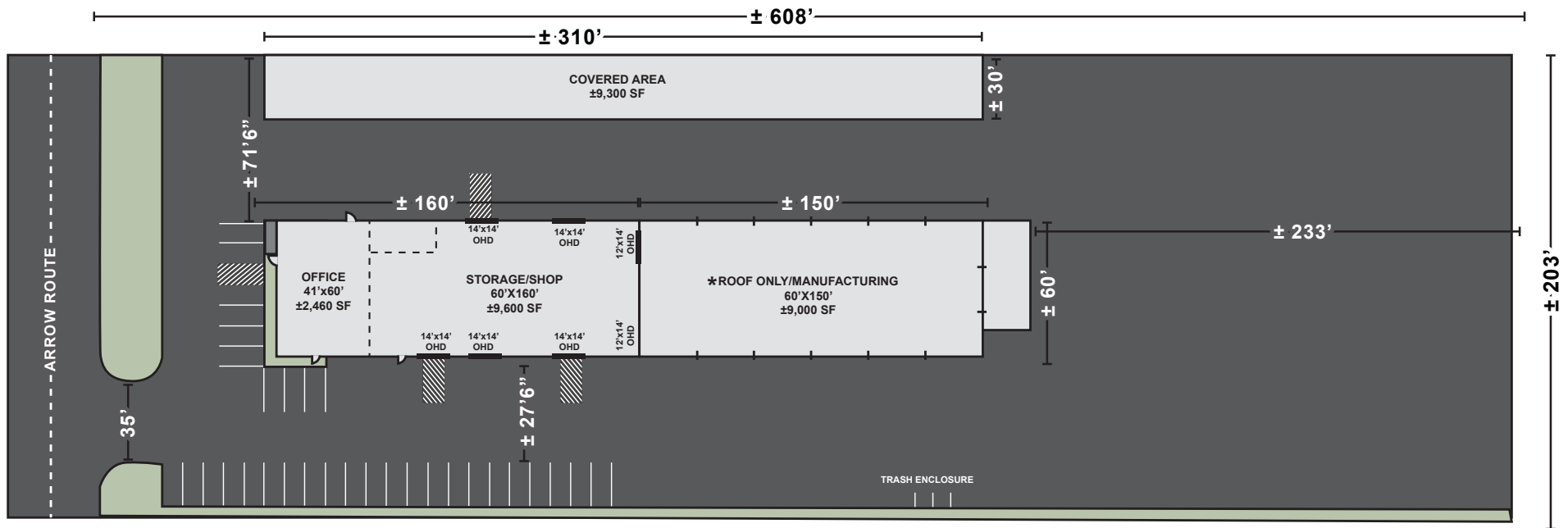
±30,360 SF STRUCTURES ON ±3.09 ACRES

FOR LEASE 15567 ARROW ROUTE

FONTANA | CA



SITE MAP



***POTENTIAL TO FULLY ENCLOSE**

APPROXIMATE / NOT TO SCALE

FOR MORE INFORMATION, CONTACT:

ERIC BURNEY | SIOR | EXECUTIVE V.P.
P: 909.560.4856
E: eburney@daumcommercial.com
CA DRE # 00697556

JOSH BURNEY | ASSOCIATE
D: 909.912.0015
E: jburney@daumcommercial.com
CA DRE # 02193758

Although all information is furnished regarding for sale, rental or financing is from sources deemed reliable, such information has not been verified and no express representation is made nor is any to be implied as to the accuracy thereof, and it is submitted subject to errors, omissions, changes of price, rental or other conditions, prior sale, lease or financing, or withdrawal without notice. D/AQ Corp. # 01129558

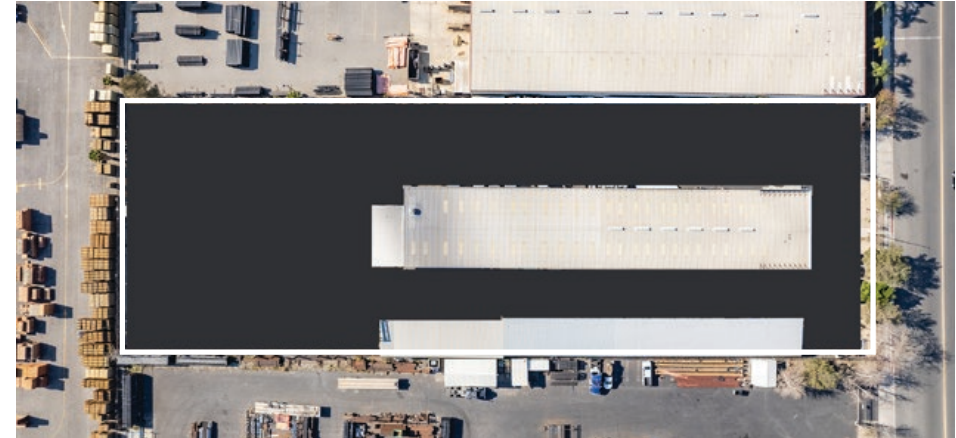
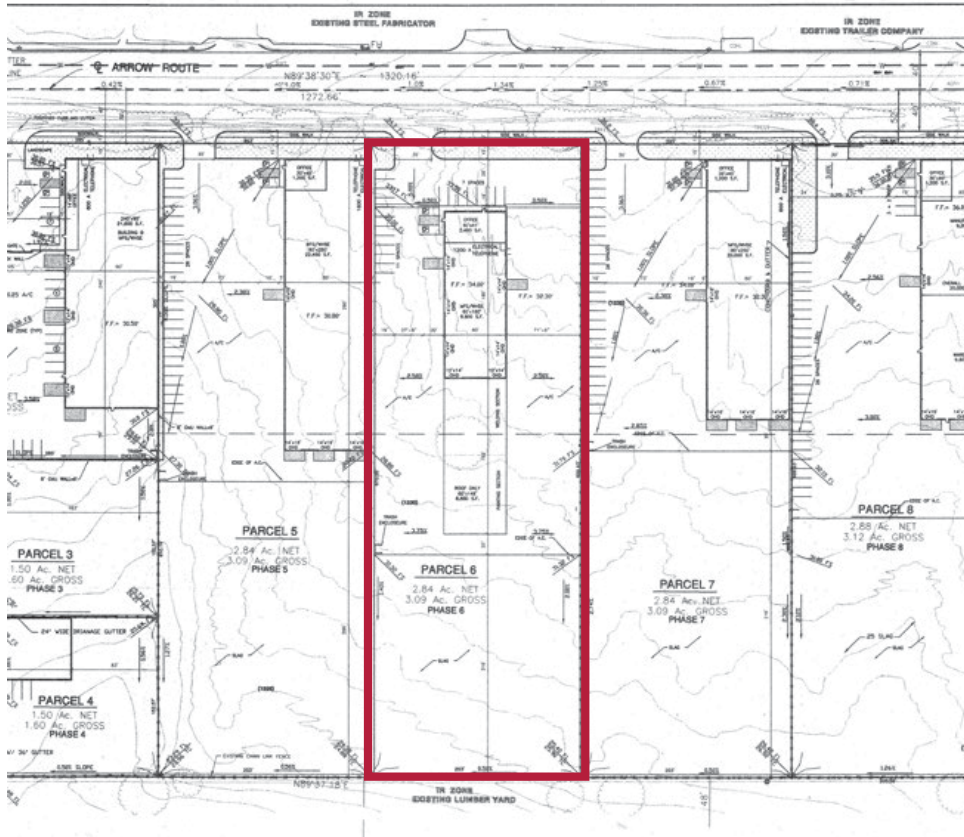
±30,360 SF STRUCTURES ON ±3.09 ACRES

FOR LEASE 15567 ARROW ROUTE

FONTANA | CA



PARCEL MAP



FOR MORE INFORMATION, CONTACT:

ERIC BURNEY | SIOR | EXECUTIVE V.P.
P: 909.560.4856
E: eburney@daumcommercial.com
CA DRE # 00697556

JOSH BURNEY | ASSOCIATE
D: 909.912.0015
E: jburney@daumcommercial.com
CA DRE # 02102750

Although all information is furnished regarding for sale, rental or financing is from sources deemed reliable, such information has not been verified and no express representation is made nor is any to be implied as to the accuracy thereof, and it is submitted subject to errors, omissions, changes of price, rental or other conditions, prior sale, lease or financing, or withdrawal without notice. D/AQ Corp. # 01129558

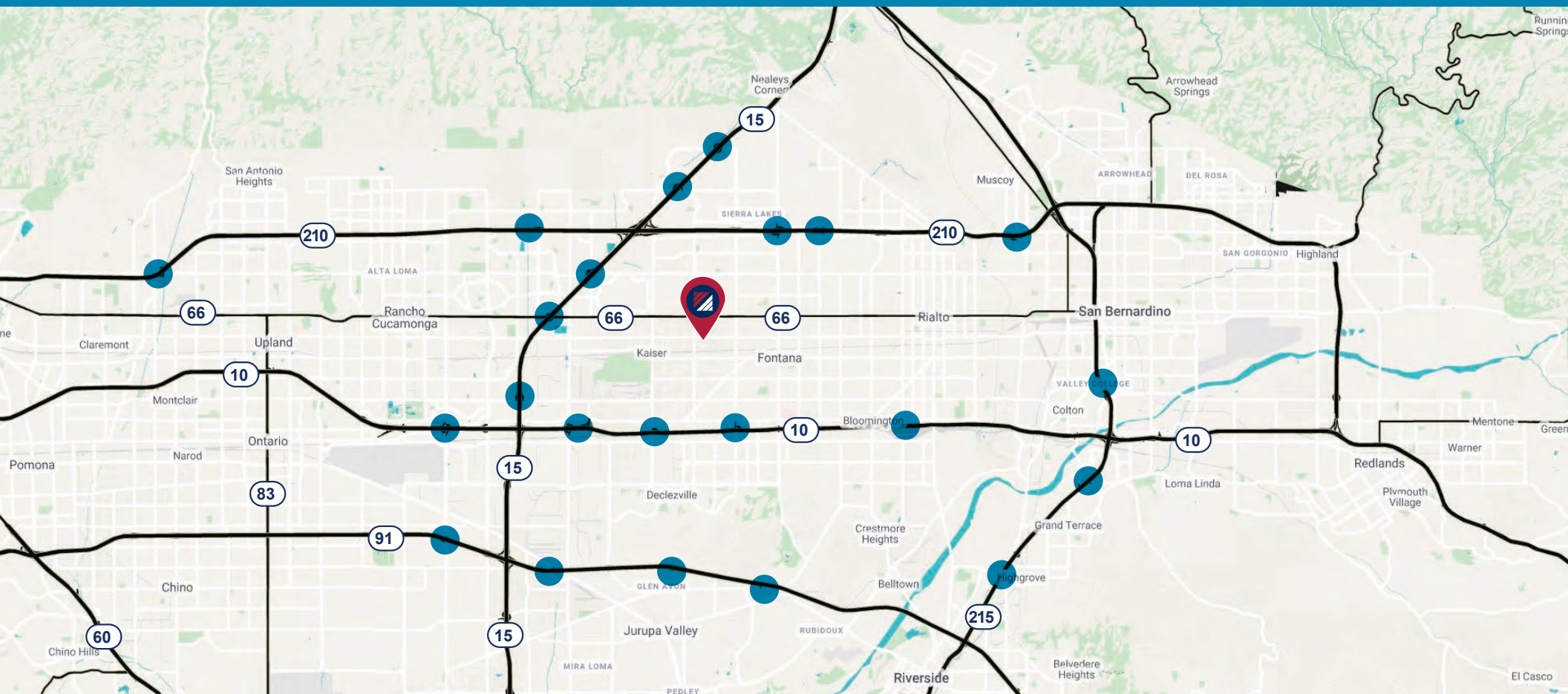
±30,360 SF STRUCTURES ON ±3.09 ACRES

FOR LEASE 15567 ARROW ROUTE

FONTANA | CA



LOCATION



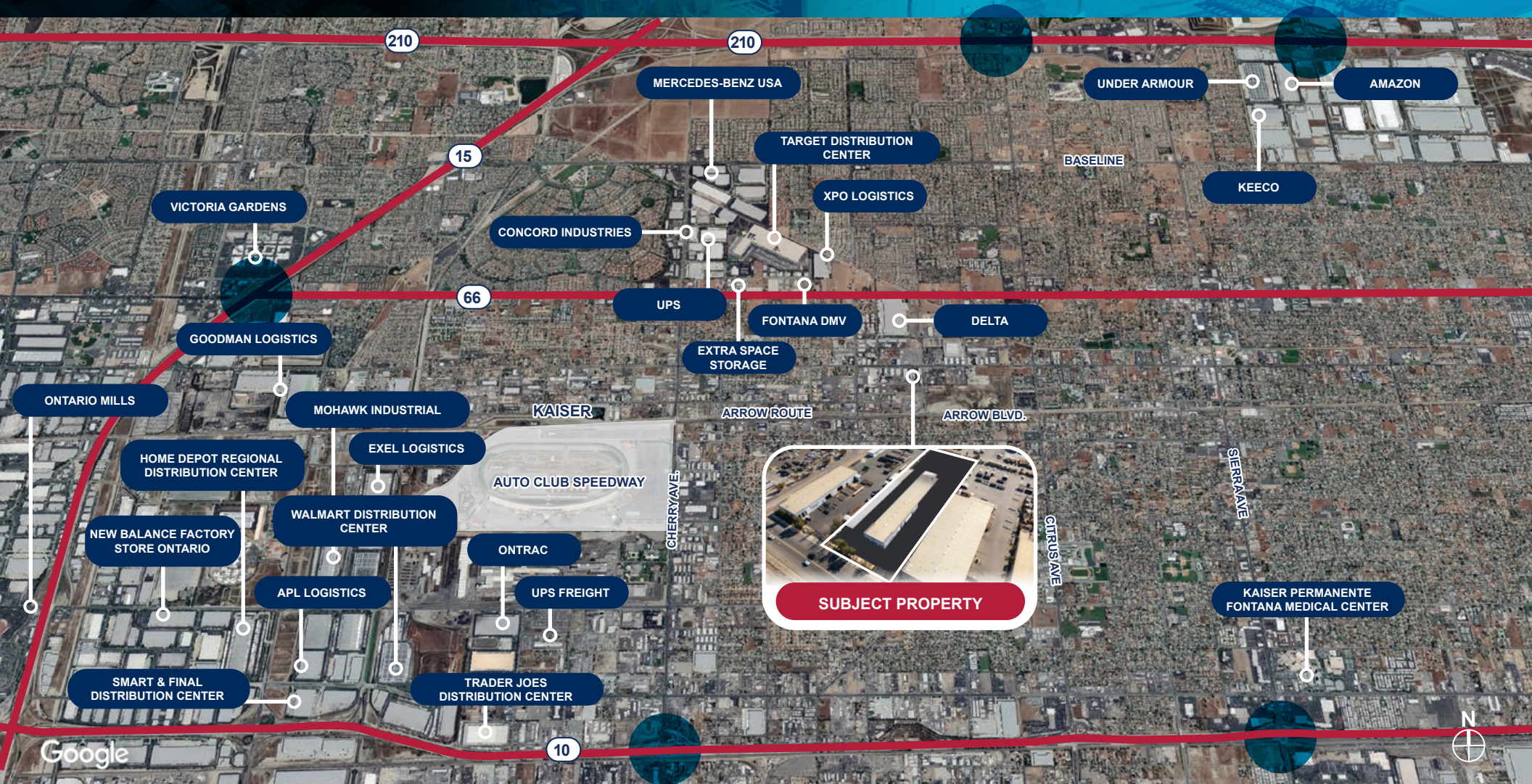
FOR MORE INFORMATION, CONTACT:

ERIC BURNEY | SIOR | EXECUTIVE V.P.
P: 909.560.4856
E: eburney@daumcommercial.com
CA DRE # 00697556

JOSH BURNEY | ASSOCIATE
D: 909.912.0015
E: jburney@daumcommercial.com
CA DRE # 02193758

Although all information is furnished regarding for sale, rental or financing is from sources deemed reliable, such information has not been verified and no express representation is made nor is any to be implied as to the accuracy thereof, and it is submitted subject to errors, omissions, changes of price, rental or other conditions, prior sale, lease or financing, or withdrawal without notice. D/AQ Corp. # 01129558

±30,360 SF STRUCTURES ON ±3.09 ACRES
FOR LEASE 15567 ARROW ROUTE
 FONTANA | CA



FOR MORE INFORMATION, CONTACT:

ERIC BURNEY | SIOR | EXECUTIVE V.P.
 P: 909.560.4856
 E: eburney@daumcommercial.com
 CA DRE # 00697556

JOSH BURNEY | ASSOCIATE
 D: 909.912.0015
 E: jburney@daumcommercial.com
 CA DRE # 02193758

Although all information is furnished regarding for sale, rental or financing is from sources deemed reliable, such information has not been verified and no express representation is made nor is any to be implied as to the accuracy thereof, and it is submitted subject to errors, omissions, changes of price, rental or other conditions, prior sale, lease or financing, or withdrawal without notice. D/AQ Corp. # 01129558