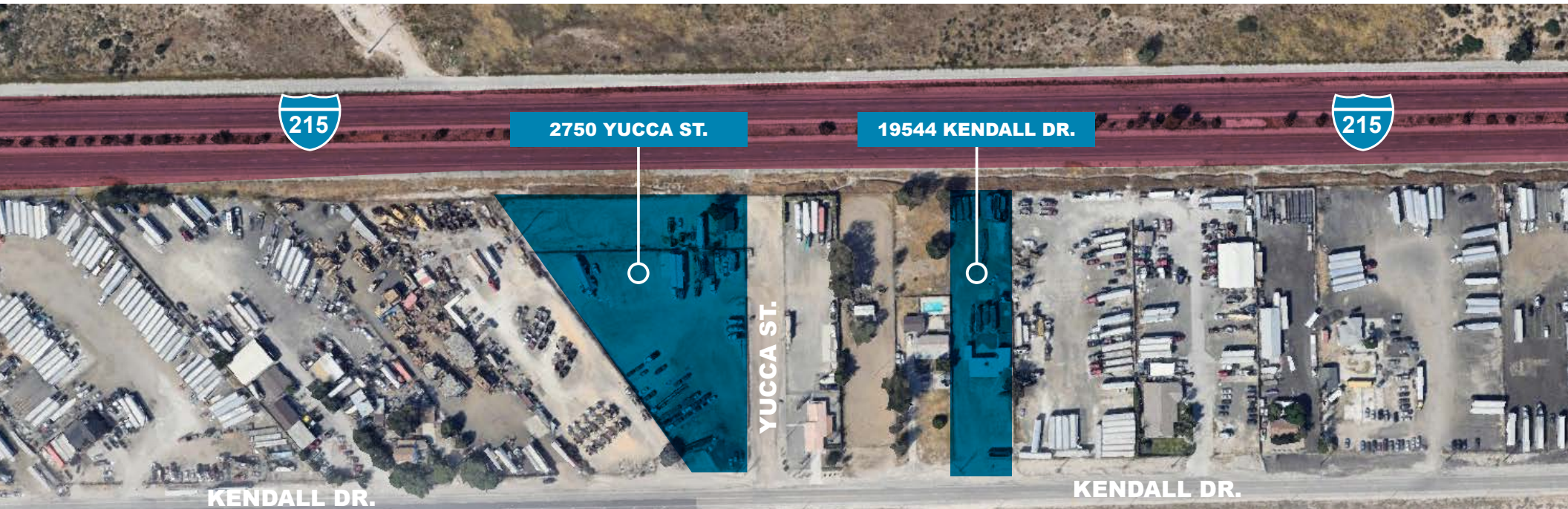


±3.53 ACRES INDUSTRIAL LAND FOR LEASE



FOR LEASE

±3.53 AC OF
INDUSTRIAL LAND

**19544 KENDALL DR.
2750 YUCCA ST.**

SAN BERNARDINO | CA | 92407

PROPERTY HIGHLIGHTS



Located in
San Bernardino



Two Buildings
Totaling 2,438 SF



Great Access to
215 Freeway

FOR MORE INFORMATION, CONTACT:

CONNOR IM
ASSOCIATE
P: 909.912.0020 | C: 253.592.4258
cim@daumcommercial.com
DRE License: #02078699

CODY WOLF
EXECUTIVE VICE PRESIDENT
P: 909.912.0018 | C: 909.996.5760
cwolf@daumcommercial.com
DRE License: #01997598

MARK SCHAFER
EXECUTIVE VICE PRESIDENT
P: 909.652.9052 | C: 949.923.9890
mark.schafer@daumcommercial.com
DRE License: #01902664

Although all information is furnished regarding for sale, rental or financing from sources deemed reliable, such information has not been verified and no express representation is made nor is any to be implied as to the accuracy thereof, and it is submitted subject to errors, omissions, changes of price, rental or other conditions, prior sale, lease or financing, or withdrawal without notice. D/AQ Corp. # 01129558

DAUM
COMMERCIAL REAL ESTATE SERVICES

FOR LEASE

±3.53 AC OF INDUSTRIAL LAND

**19544 KENDALL DR.
2750 YUCCA ST.**

SAN BERNARDINO | CA | 92407

AERIAL

PROPERTY HIGHLIGHTS



19544 Kendall:
±1 Acre w/ ±1,718 SF
Office Space



Built in 1957 & 1954

2750 Yucca St:
±2.53 Acres w/
±720 SF Office Space



Zoned GHSP-CI



**±2,438 SF
Available**



**APNs: 0236-161-06,
26, & 27**



**±3.53 AC
of Land**



**Great Access to
215 Freeway and
Close Proximity to 15
& 210 Freeways**



**Two Yards Can Be
Leased Separately or
Together**



Although all information is furnished regarding for sale, rental or financing from sources deemed reliable, such information has not been verified and no express representation is made nor is any to be implied as to the accuracy thereof, and it is submitted subject to errors, omissions, changes of price, rental or other conditions, prior sale, lease or financing, or withdrawal without notice. D/AQ Corp. # 01129558

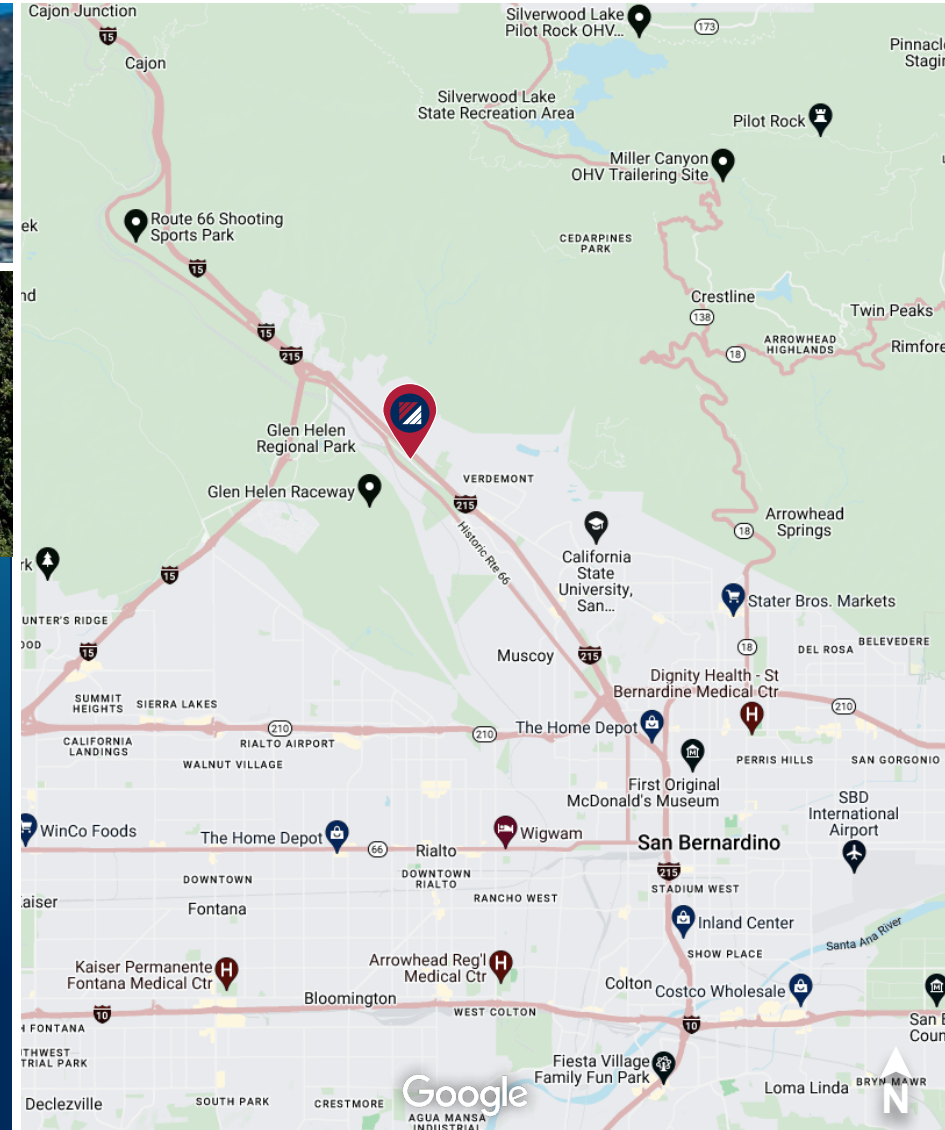
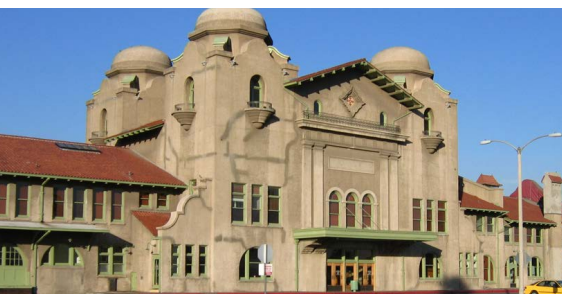
FOR LEASE

±3.53 AC OF INDUSTRIAL LAND

**19544 KENDALL DR.
2750 YUCCA ST.**

SAN BERNARDINO | CA | 92407

LOCATION MAP



ABOUT SAN BERNARDINO

The City of San Bernardino is a community rich in history and cultural diversity. Influences of Native Americans, Mexican settlers, Spanish missionaries and Mormon emigrants can still be seen throughout the City today. From the day in 1810 when Franciscan missionary Father Dumetz named the area San Bernardino to the present, San Bernardino - nestled south of the San Bernardino Mountains and west of the lower desert - has been recognized for its scenic beauty and strategic location. Today, the City of San Bernardino serves as the county seat and is the largest city in the County of San Bernardino with a population of over 213,000.

Although all information is furnished regarding for sale, rental or financing from sources deemed reliable, such information has not been verified and no express representation is made nor is any to be implied as to the accuracy thereof, and it is submitted subject to errors, omissions, changes of price, rental or other conditions, prior sale, lease or financing, or withdrawal without notice. D/AQ Corp. # 01129558

