



**MAJOR PRICE REDUCTION
4% TO CO-OP BROKER
FLEXIBLE LEASE TERMS**



30,151 SF AVAILABLE FOR LEASE

INSTITUTIONALLY MANAGED | FLEXIBILITY TO GROW IN A PORTFOLIO | DELIVERING UNPRECEDENTED CUSTOMER SERVICE

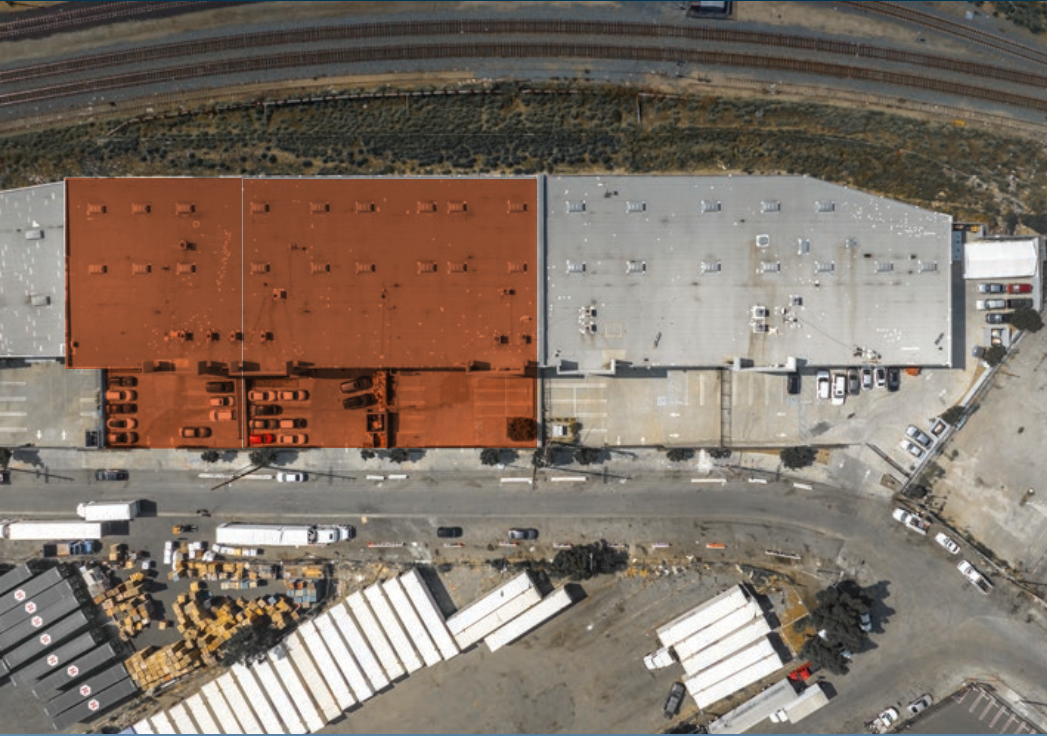
1525-1545 Rio Vista Avenue | Los Angeles, CA 90023





PROPERTY HIGHLIGHTS

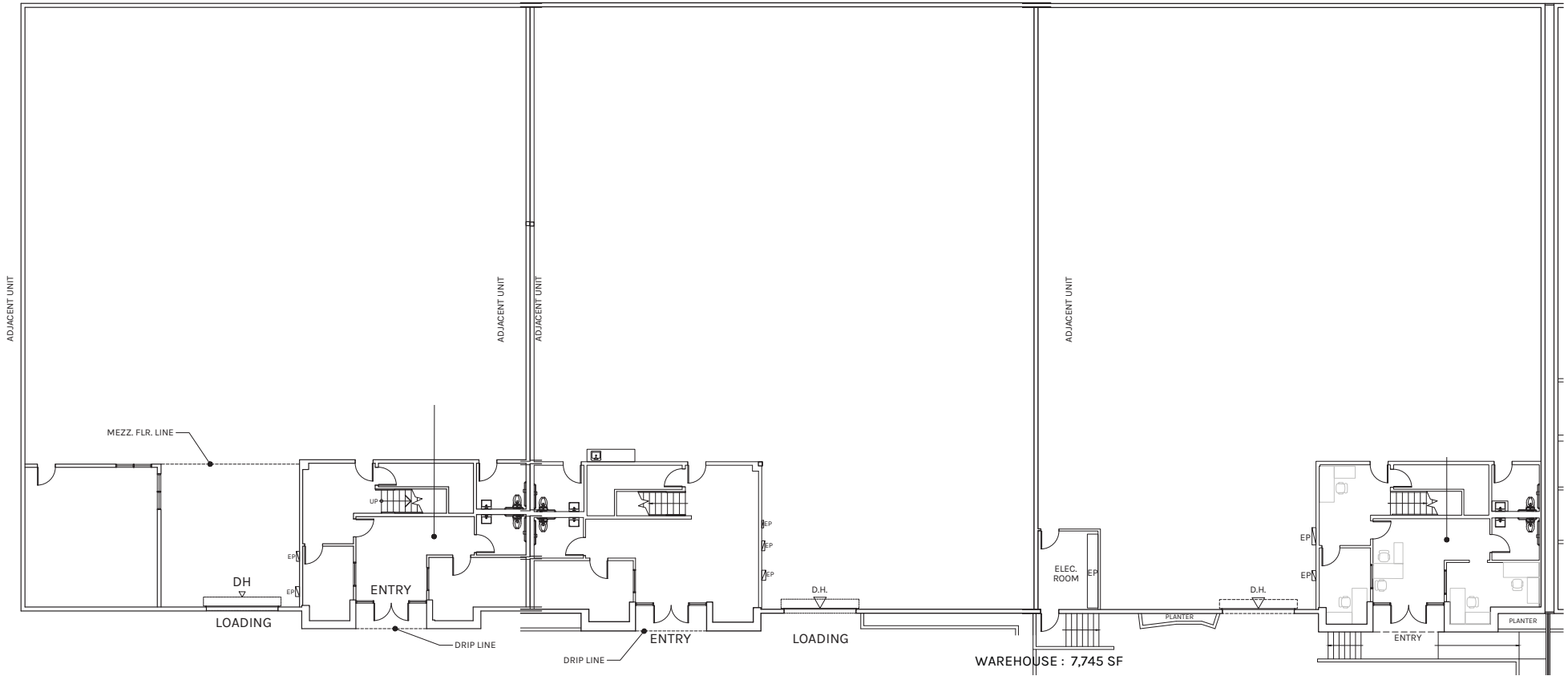
- Premier Industrial Park - Low CAM
- 28' Clear Height
- Three (3) Dock High Loading Doors
- 7,297 SF Office Space
- 30 Fenced, Secure, Concrete Parking
- K-25 ESRF Sprinklers
- Easy Access to 10, 5, 60, 110, 710 & 101 Fwys
- Minutes from Downtown, Vernon, and Arts District
- 4% to Co-Op Brokers if Lease Signed Before March 31, 2024
- Flex Lease Terms
- Lease Rate \$1.70/SF/Month, MG, plus an estimated \$0.13 CAM/SF/Month
- Ideal Distribution Facility







OVERALL FLOOR PLAN 30,151 SF



**GROUND FLOOR
OFFICE PLAN
1,531 SF**

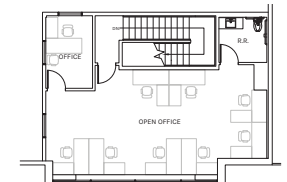
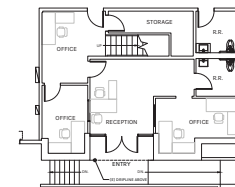
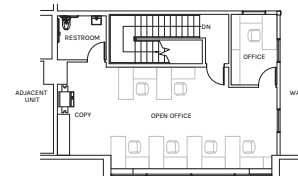
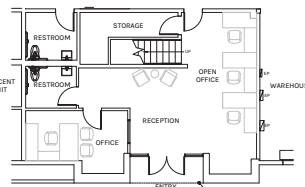
**MEZZANINE
FLOOR OFFICE
2,056 SF**

**FIRST FLOOR
OFFICE PLAN
963 SF**

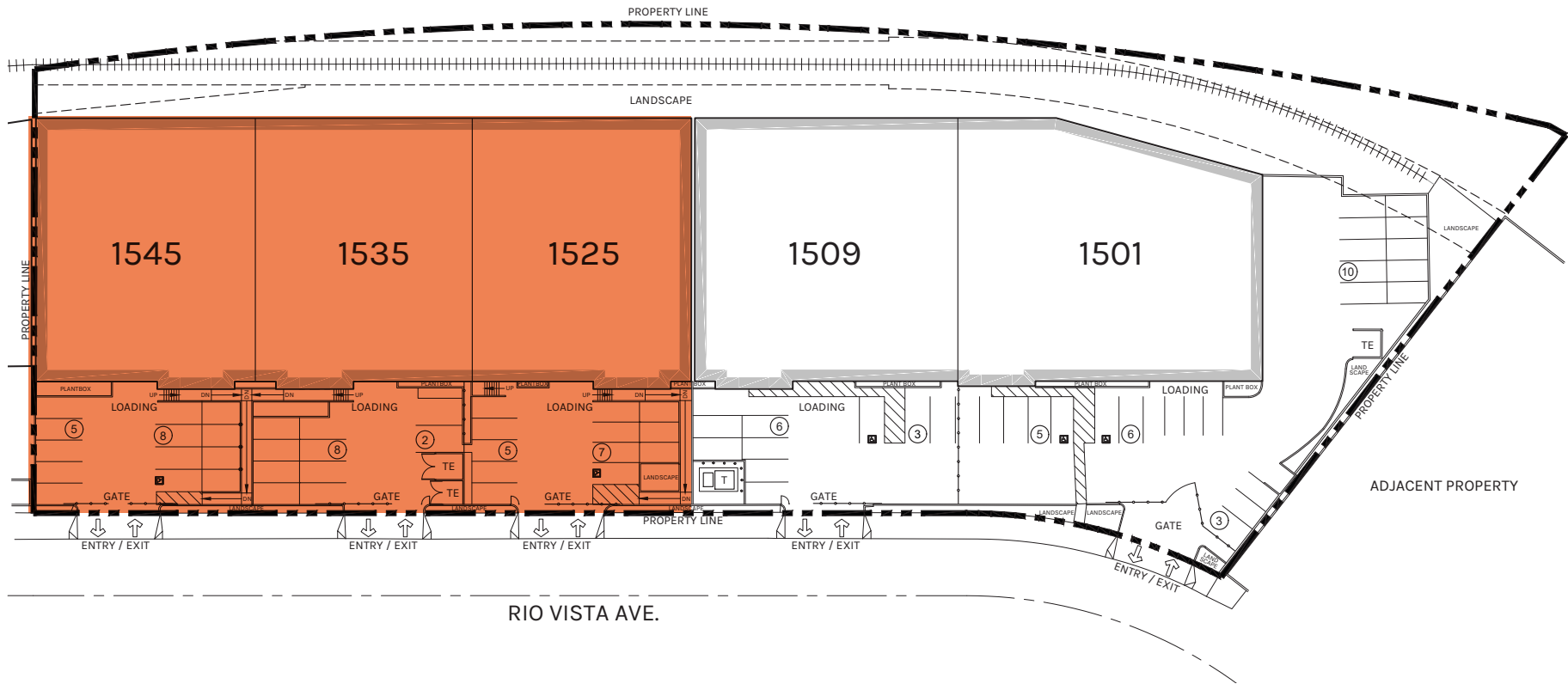
**MEZZANINE
OFFICE PLAN
899 SF**

**FIRST FLOOR
OFFICE PLAN
915 SF**

**SECOND FLOOR
OFFICE PLAN
933 SF**



PLAN LAYOUT SUBJECT TO FIELD CONDITIONS AND MAY DIFFER FROM PLAN AS SHOWN. ALL INFORMATION PRESENTED ON THIS DRAWING IS PRESUMED TO BE ACCURATE, HOWEVER TENANT SHOULD VERIFY PERTINENT INFORMATION PRIOR TO COMMITTING TO A LEASE. ANY FURNITURE OR APPLIANCES SHOWN ON PLAN ARE FOR CONCEPT ONLY AND WILL BE TENANT PROVIDED.



TOTAL
30,151 SF

PLAN LAYOUT SUBJECT TO FIELD CONDITIONS AND MAY DIFFER FROM PLAN AS SHOWN. ALL INFORMATION PRESENTED ON THIS DRAWING IS PRESUMED TO BE ACCURATE, HOWEVER TENANT SHOULD VERIFY PERTINENT INFORMATION PRIOR TO COMMITTING TO A LEASE. ANY FURNITURE OR APPLIANCES SHOWN ON PLAN ARE FOR CONCEPT ONLY AND WILL BE TENANT PROVIDED.



**Rexford
Industrial**

Leasing Contacts

JERRY SACKLER
213.270.2267
jsackler@daumcre.com
CA LIC# 01098039

BRYAN ABAYAN
310.883.8476
babayan@daumcre.com
CA LIC# 02005294

