

OWNER USER OR INVESTMENT PROPERTY



FOR SALE
± 8,222 SF

1247 S GENE AUTRY TRL
Palm Springs, CA 92264

FOR MORE INFORMATION, CONTACT:

Jeff Demorest
Vice President
P: 760.253.8539 | M: 949.835.2227
jdemorest@daumcommercial.com
CADRE #00712944

Kenneth Hulbert
Executive Vice President
P: 760.253.8539 | M: 949.525.2547
ken.hulbert@daumcommercial.com
CADRE #00664146

Although all information is furnished regarding for sale, rental or financing is from sources deemed reliable, such information has not been verified and no express representation is made nor is any to be implied as to the accuracy thereof, and it is submitted subject to errors, omissions, changes of price, rental or other conditions, prior sale, lease or financing, or withdrawal without notice.



PROPERTY INFO 1247 S GENE AUTRY TRL

Industrial Property | ± 8,222 SF

Property Description

Free-standing industrial building on large lot with plenty of parking. Part of multi-unit business park

Palm Springs M1 zoning with Retail and commercial activities. (See Palm Springs M1 Zoning uses 92.17)

For example: Automotive or motorcycle sales showroom, private club, manufacture and retail in one facility, artisan production and gallery or split the building up into 3 or 4 individual units and rent them out.



Asking Price

\$2,800,000.00

Features

- Lot size – 33,541 per Assessor
- 1,600 amps
- 25 regular Parking Spaces and 4 Handicapped Parking Spaces
- Parking in front, back and north side of building
- Two parking spaces (included in the above numbers) have electric vehicle chargers
- APN: 680-570-011
- Three grade level roll-up doors in back (12'x14')
- Palm Springs International Airport 5 minutes away. Gene Autry Trail has direct access to I-10 and HWY 111
- Fenced Lot
- Skylights
- Frontage on Gene Autry

FOR MORE INFORMATION, CONTACT:

Jeff Demorest
Vice President
P: 760.253.8539 | M: 949.835.2227
jdemorest@daumcommercial.com
CADRE #00712944

Kenneth Hulbert
Executive Vice President
P: 760.253.8539 | M: 949.525.2547
ken.hulbert@daumcommercial.com
CADRE #00664146

Although all information is furnished regarding for sale, rental or financing is from sources deemed reliable, such information has not been verified and no express representation is made nor is any to be implied as to the accuracy thereof, and it is submitted subject to errors, omissions, changes of price, rental or other conditions, prior sale, lease or financing, or withdrawal without notice.

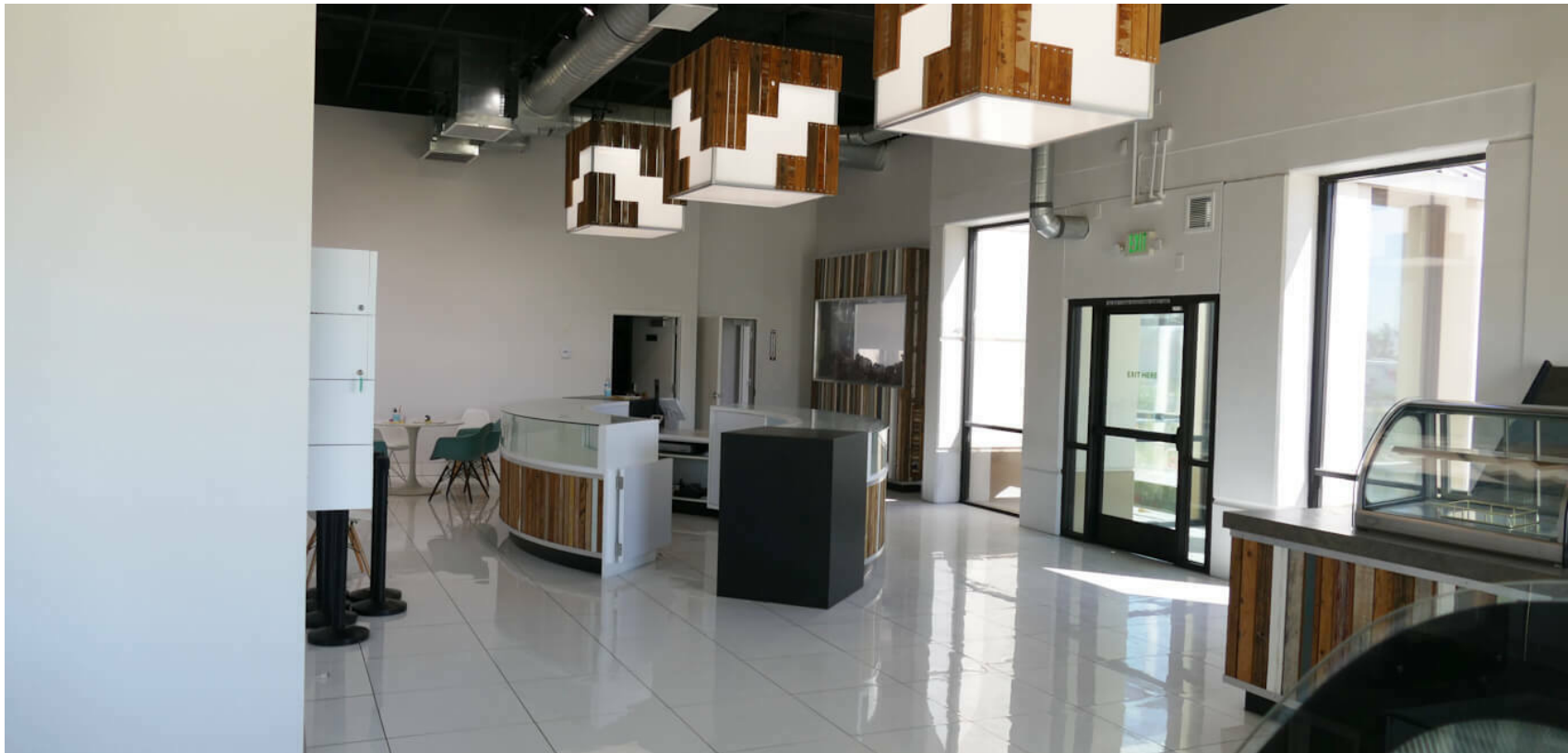


1247 S GENE AUTRY TRL

Industrial Property | ± 8,222 SF

Although all information is furnished regarding for sale, rental or financing is from sources deemed reliable, such information has not been verified and no express representation is made nor is any to be implied as to the accuracy thereof, and it is submitted subject to errors, omissions, changes of price, rental or other conditions, prior sale, lease or financing, or withdrawal without notice.

DAUM
COMMERCIAL REAL ESTATE SERVICES



1247 S GENE AUTRY TRL

Industrial Property | ± 8,222 SF

