

FOR LEASE

17631 METZLER LANE
HUNTINGTON BEACH | CA
92647



6,000 SF
SQUARE FEET



1,980
OFFICE SF



20'
CLEAR HEIGHT



Two (2)
GL DOORS

FOR MORE INFORMATION PLEASE CONTACT:

MIKE BARREIRO, SIOR
EXECUTIVE VICE PRESIDENT

P: 949.355.8500

mbarreiro@daumcre.com

CADRE #01712620



DEVIN RAY
VICE PRESIDENT

P: 949.242.1065

dray@daumcre.com

CADRE #02018130



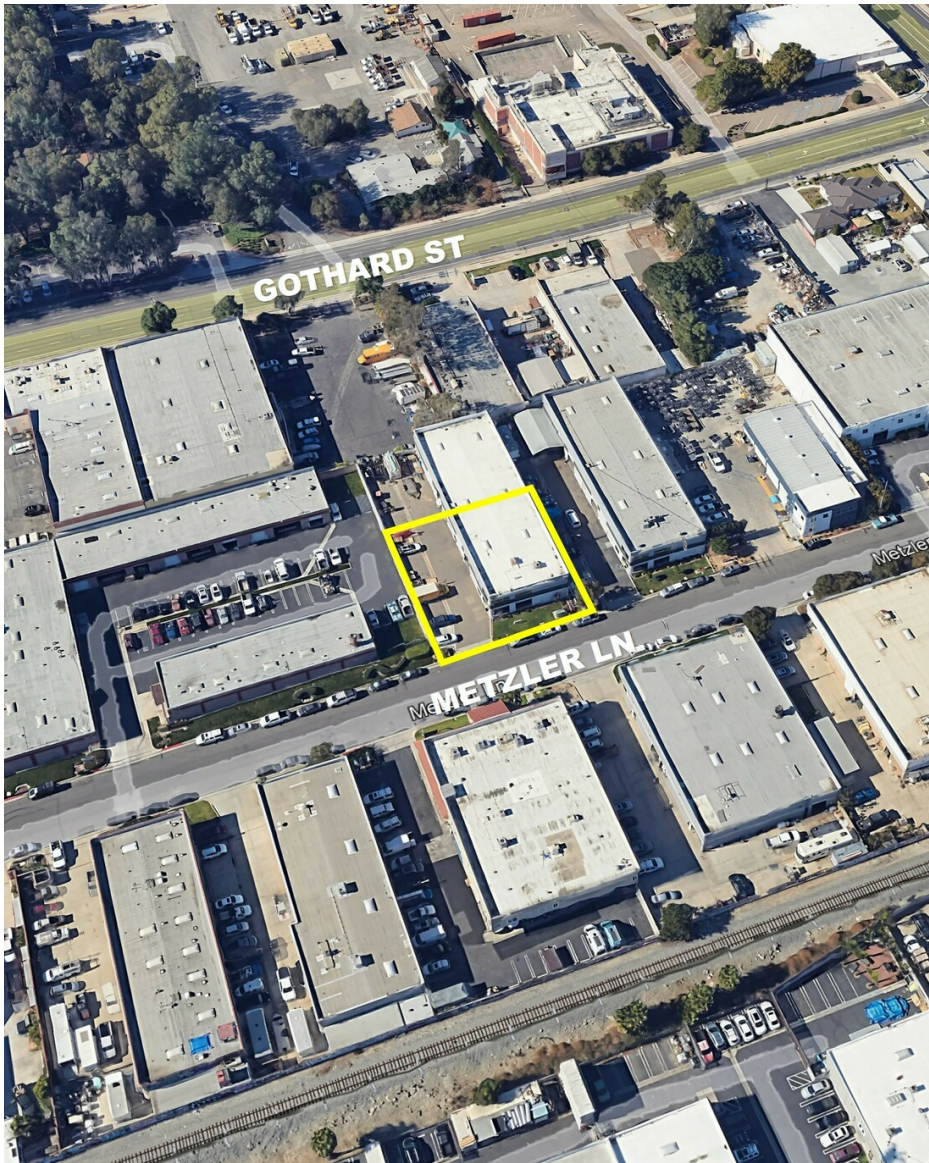
Although all information is furnished regarding for sale, rental or financing is from sources deemed reliable, such information has not been verified and no express representation is made nor is any to be implied as to the accuracy thereof, and it is submitted subject to errors, omissions, changes of price, rental or other conditions, prior sale, lease or financing, or withdrawal without notice.



6,000 SF INDUSTRIAL
WAREHOUSE W/FENCED YARD

6,000 SF
IND UNIT

FOR LEASE
17631 METZLER LANE
HUNTINGTON BEACH | CA



PROPERTY FEATURES:

- ±6,000 SF Industrial Unit
- ±1,980 SF Office
- Two (2) Oversized GL Doors (12' x 14')
- Exclusive Building Signage
- 20' Clear Height
- Oversized Secured Yard
- Parking 2:1,000
- Sprinklered
- Two (2) Restrooms
- Skylights

FOR MORE INFORMATION PLEASE CONTACT:

MIKE BARREIRO, SIOR
EXECUTIVE VICE PRESIDENT



P: 949.355.8500
mbarreiro@daumcre.com
CADRE #01712620

DEVIN RAY
VICE PRESIDENT

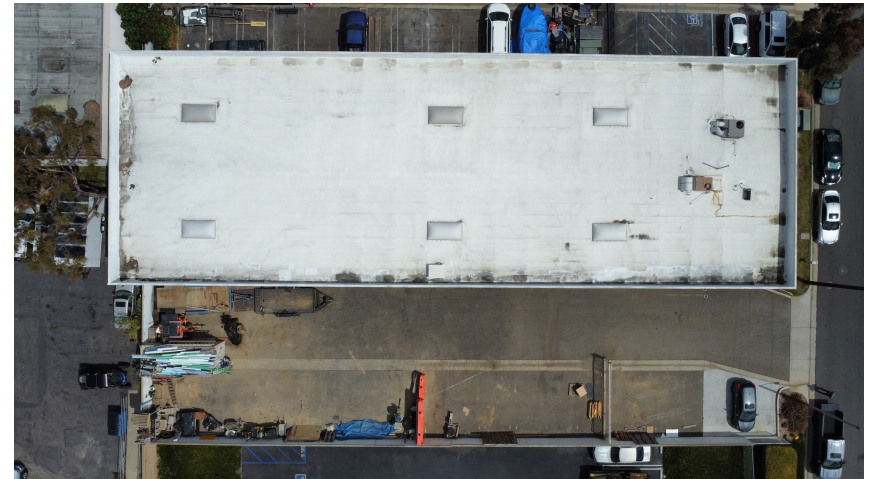


P: 949.242.1065
dray@daumcre.com
CADRE #02018130

Although all information is furnished regarding for sale, rental or financing is from sources deemed reliable, such information has not been verified and no express representation is made nor is any to be implied as to the accuracy thereof, and it is submitted subject to errors, omissions, changes of price, rental or other conditions, prior sale, lease or financing, or withdrawal without notice.

6,000 SF
IND UNIT

FOR LEASE
17631 METZLER LANE
HUNTINGTON BEACH | CA



FOR MORE INFORMATION PLEASE CONTACT:

MIKE BARREIRO, SIOR
EXECUTIVE VICE PRESIDENT



P: 949.355.8500
mbarreiro@daumcre.com
CADRE #01712620

DEVIN RAY
VICE PRESIDENT



P: 949.242.1065
dray@daumcre.com
CADRE #02018130

Although all information is furnished regarding for sale, rental or financing is from sources deemed reliable, such information has not been verified and no express representation is made nor is any to be implied as to the accuracy thereof, and it is submitted subject to errors, omissions, changes of price, rental or other conditions, prior sale, lease or financing, or withdrawal without notice.



6,000 SF
IND UNIT

FOR LEASE
17631 METZLER LANE
HUNTINGTON BEACH | CA



FOR MORE INFORMATION PLEASE CONTACT:

MIKE BARREIRO, SIOR
EXECUTIVE VICE PRESIDENT



P: 949.355.8500
mbarreiro@daumcre.com
CADRE #01712620

DEVIN RAY
VICE PRESIDENT



P: 949.242.1065
dray@daumcre.com
CADRE #02018130

Although all information is furnished regarding for sale, rental or financing is from sources deemed reliable, such information has not been verified and no express representation is made nor is any to be implied as to the accuracy thereof, and it is submitted subject to errors, omissions, changes of price, rental or other conditions, prior sale, lease or financing, or withdrawal without notice.