

8509-8511

Steller Drive

CULVER CITY | CALIFORNIA



± 13,500 SF FREE-STANDING BUILDING FOR LEASE

DAVID FREITAG
P: 213.270.2235 | M: 310.413.9390
E: dfreitag@daumcre.com
CA License #00855673

MARIANNA LINK
P: 213.270.2228
E:mlink@daumcre.com
CA License #01943085

WWW.THELAININDUSTRIAL.COM

DAUM
COMMERCIAL REAL ESTATE SERVICES

8509-8511

Steller Drive

CULVER CITY | CALIFORNIA

ABOUT THE PROPERTY



Culver City Hayden Tract



Free Standing Building



**Outstanding Office/
Warehouse Facility**



100% Air Conditioned



Polished Concrete Floors



Bow-Truss Ceiling



**Skylights & Natural
Light Throughout**

PROPERTY HIGHLIGHTS



±13,500 Available SF



±21,344 Land SF



±10,000 Office SF



1946 Year Built



600A; 240-240; 3P; 4W – Verify



Sprinklered



1 – 10'x12' GL Door



12' Clear Height



15 Parking Spaces



APN 4205-021-014

LEASE

Asking Lease Rate: TBD

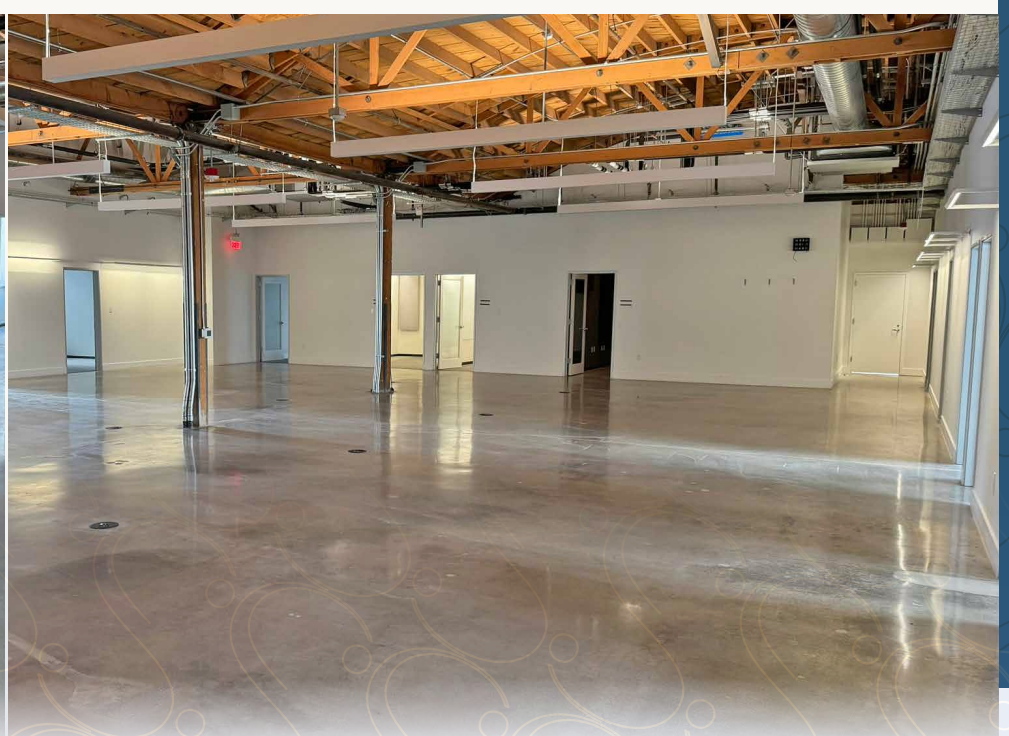
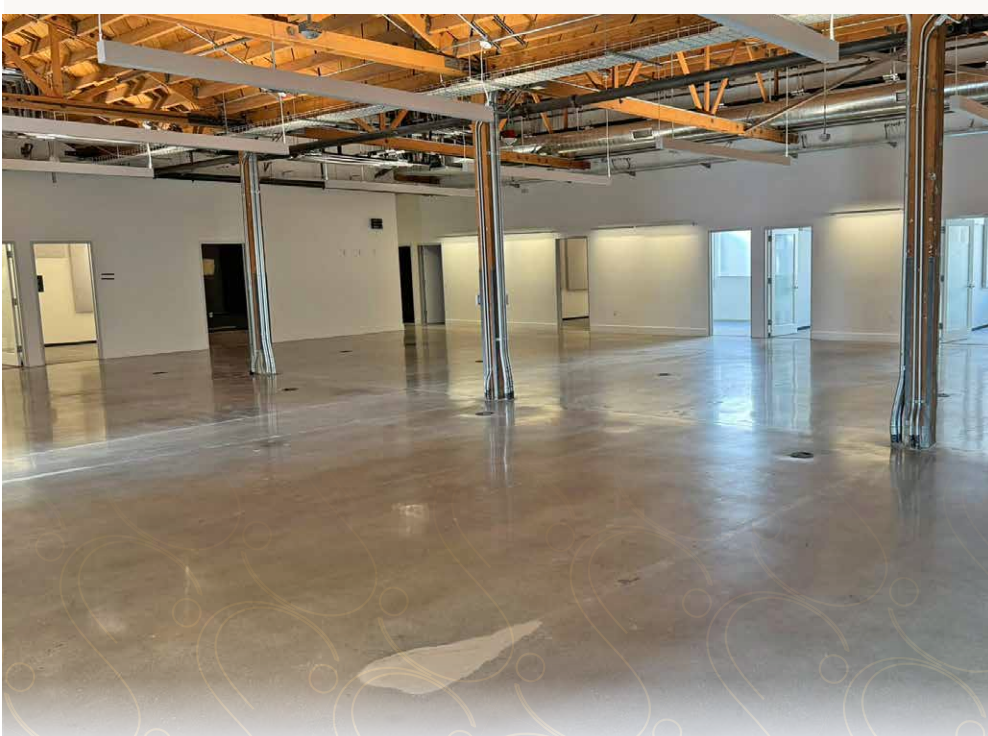
\$0.31/SF/Month NNN's

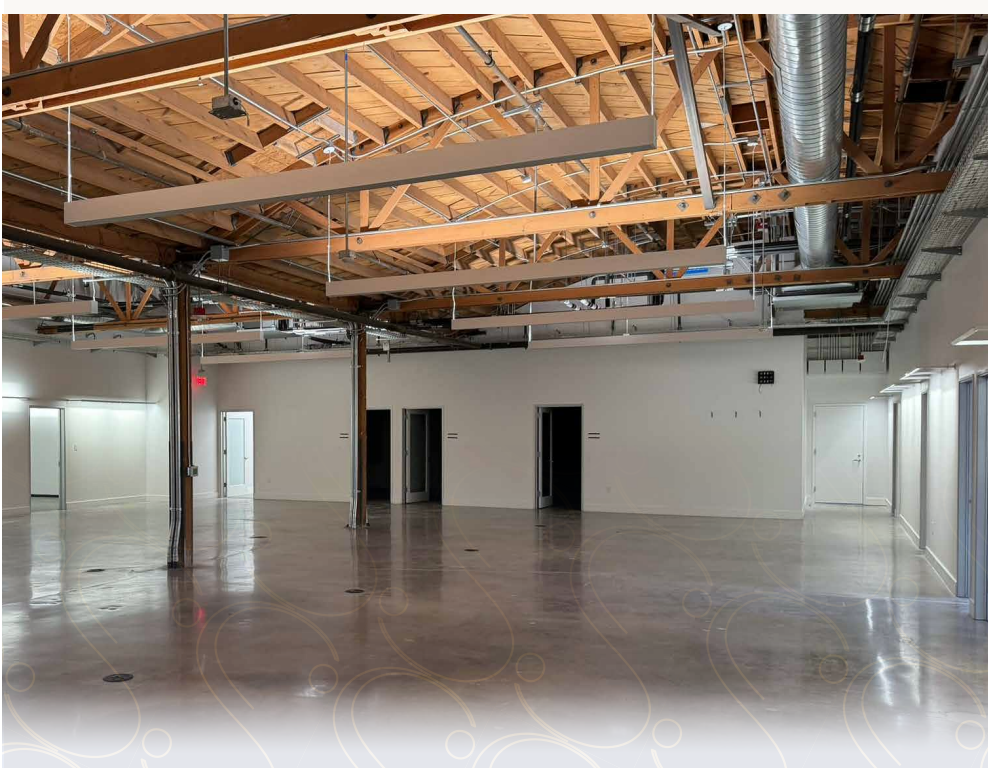
Submit Term

Available Now



8509-8511
Steller
Drive





8509-8511

Steller Drive



LOCATION



**ADJACENT
TO THE 10
FWY**



**20 MINUTES
FROM DTLA**



LOS ANGELES
INTERNATIONAL AIRPORT
15 MIN | 7.7 MI

BOB HOPE AIRPORT
31 MIN | 15.3 MI

LONG BEACH-DAUGHERTY
FIELD AIRPORT
33 MIN | 24.2 MI



LA CIENEGA/JEFFERSON (EXPO LINE -
LOS ANGELES METRO)
1 MIN DRIVE
12 MIN WALK

CULVER CITY (EXPO LINE - LOS
ANGELES COUNTY METRO)
2 MIN DRIVE
13 MIN WALK



LOCATION:

Situated in the Los Angeles metropolitan area, it is bordered by the city of Los Angeles, including neighborhoods like Mar Vista, Palms, Westchester, and Baldwin Hills.

HISTORY:

Culver City was founded by Harry Culver in 1917. It has a longstanding association with the entertainment industry, home to several historic film studios. The city is often referred to as "The Heart of Screenland."

ECONOMY AND INFRASTRUCTURE:

Entertainment Industry: Major studios such as Sony Pictures Entertainment, formerly MGM Studios, are based in Culver City.

Business and Tech: In recent years, the city has seen growth in the tech and startup sectors, attracting businesses related to media, technology, and innovation.

CULTURE AND LIFESTYLE:

Arts and Culture: The city boasts a vibrant arts scene with numerous galleries, theaters, and live performance

venues. The Kirk Douglas Theatre and the Actors' Gang Theatre are notable cultural institutions.

Parks and Recreation: There are numerous parks and recreational facilities, including the Baldwin Hills Scenic Overlook and Culver City Park.

Dining and Shopping: Culver City offers a diverse range of dining options, from trendy cafes to high-end restaurants, and several shopping districts, including the Platform and the Culver City Arts District.





Culver City, soaked in moviemaking history,



features a buzzing dining and nightlife scene, which includes globally inspired eateries, gastropubs and cozy cocktail bars. Occupying the MGM lot, which dates back to 1924, Sony Pictures Studios offers behind-the-scenes tours of its legendary soundstages. Other cultural highlights include spare but sophisticated art galleries, playhouses and the storied Culver Hotel.

TOP COMPANIES



AMAZON STUDIOS



ZAMBEZI



sweetgreen



KAISER PERMANENTE



Los Angeles, CA

Los Angeles, often abbreviated as L.A., is the largest city in California and the second-largest city in the United States. It is renowned for its cultural diversity, economic influence, and pivotal role in the entertainment industry. Situated in Southern California, Los Angeles spans a large area with diverse landscapes, including beaches, mountains, and urban environments.

Entertainment Industry: Known as the “Entertainment Capital of the World,” Los Angeles is home to major film studios, television networks, and music recording companies. Hollywood, a district in L.A., is synonymous with the movie industry.

Technology and Innovation: The city has a growing tech sector, often referred to as “Silicon Beach,” with numerous startups and established tech companies.

Trade and Manufacturing: The Port of Los Angeles is one of the busiest in the world, making the city a major hub for international trade. Aerospace, fashion, and apparel manufacturing are also significant contributors to the local economy.

DEMOGRAPHICS

8509-8511

Steller Drive

DEMOGRAPHICS	2 MILES	5 MILES	10 MILES
2010 POPULATION	130,030	890,640	2,777,900
2022 POPULATION	133,077	924,141	2,875,026
2027 POPULATION PROJECTION	131,612	916,304	2,849,339
2010 HOUSEHOLDS	52,219	368,508	1,039,984
2022 HOUSEHOLDS	52,852	379,458	1,076,266
2027 HOUSEHOLD PROJECTION	52,150	375,651	1,066,467
TOTAL SPECIFIED CONSUMER SPENDING (\$)	\$1.7B	\$12.7B	\$34.4B



FORMIDABLE COMPANIES IN CULVER CITY

CULVER CITY'S HISTORY IS RICH AND CLOSELY TIED TO THE DEVELOPMENT OF THE ENTERTAINMENT INDUSTRY IN SOUTHERN CALIFORNIA.





Future Developments

Crenshaw/ LAX Line

The upcoming Crenshaw/LAX Line, currently under construction, will connect the Metro E Line in Culver City to the Metro Green Line and Los Angeles International Airport (LAX). This new line is expected to enhance connectivity and provide additional transportation options for Culver City residents and visitors.



8509-8511

Steller Drive.

CULVER CITY | CALIFORNIA

David Freitag
P: 213.270.2235 | M: 310.413.9390
E: dfreitag@daumcre.com
CA License #00855673

Marianna link
P: 213.270.2228
E:mlink@daumcre.com
CA License #01943085

 **DAUM**
COMMERCIAL REAL ESTATE SERVICES

D/AQ Corp. #01129558. Maps Courtesy ©Google & ©Microsoft. Although all information is furnished regarding for sale, rental or financing is from sources deemed reliable, such information has not been verified and no express representation is made nor is any to be implied as to the accuracy thereof, and it is submitted subject to errors, omissions, changes of price, rental or other conditions, prior sale, lease or financing, or withdrawal without notice.

www.daumcommercial.com | www.thelaindustrial.com