



1341 & 1367

FLOWER ST
LOS ANGELES | CA



FOR LEASE

GREAT CREATIVE MULTI-PURPOSE INDUSTRIAL BUILDING

18,500 SF
SQUARE FEET

3,360
OFFICE SF

BOW TRUSS ROOF
HIGH CLEARANCE

3
GL DOORS

PROPERTY HIGHLIGHTS

- Free Standing Building
- Great Natural Light With Bow Truss Roof
- Three (3) Ground Level Loading Doors
- Fenced Secure Parking
- 35 Secure Parking Spaces
- Adjacent To Crypto Arena & Convention Center
- Walking Distance To Blue Line Light Rail Station
- \$0.95 / SF / Month Gross

FOR MORE INFORMATION PLEASE CONTACT:

DAVID MUIR
EXECUTIVE VICE PRESIDENT
P: 213.270.2244
david.muir@daumcommercial.com
CADRE #01210653

JERRY SACKLER
EXECUTIVE VICE PRESIDENT
P: 213.270.2267 | M: 310.721.5000
jerry.sackler@daumcommercial.com
CADRE #01098039

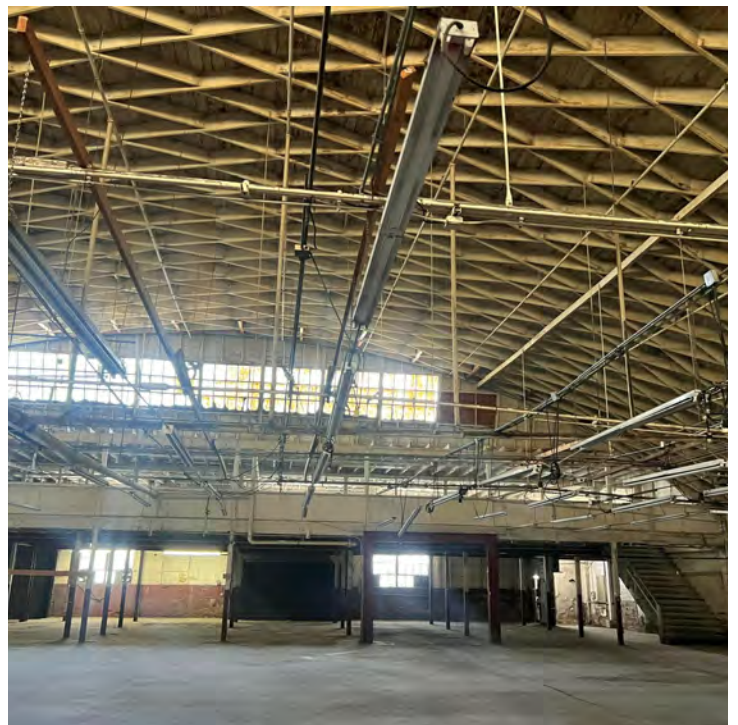
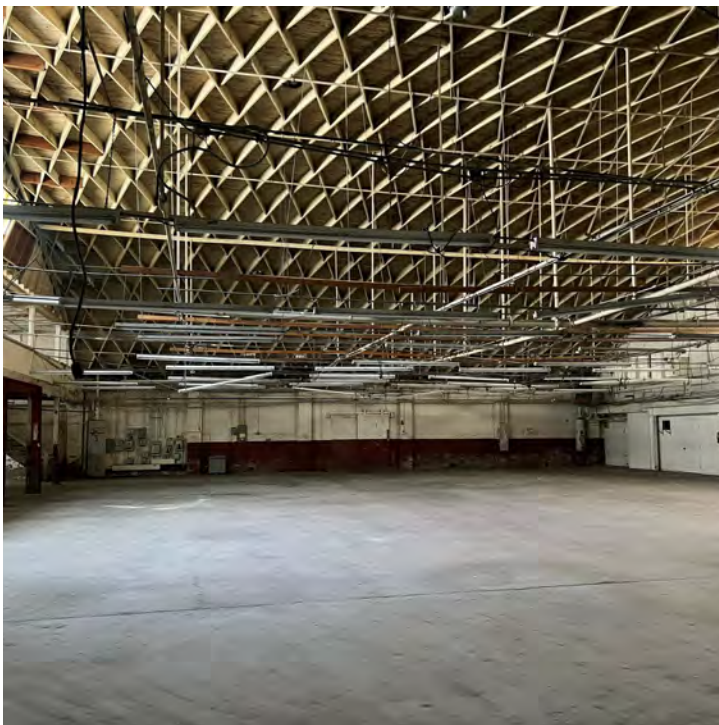
Although all information is furnished regarding for sale, rental or financing is from sources deemed reliable, such information has not been verified and no express representation is made nor is any to be implied as to the accuracy thereof, and it is submitted subject to errors, omissions, changes of price, rental or other conditions, prior sale, lease or financing, or withdrawal without notice.



1341 & 1367 FLOWER ST LOS ANGELES | CA

FOR LEASE

CREATIVE BUILDING



Although all information is furnished regarding for sale, rental or financing is from sources deemed reliable, such information has not been verified and no express representation is made nor is any to be implied as to the accuracy thereof, and it is submitted subject to errors, omissions, changes of price, rental or other conditions, prior sale, lease or financing, or withdrawal without notice.

DAUM
COMMERCIAL REAL ESTATE SERVICES