




2000


E. 67TH ST.
HUNTINGTON PARK | CA

FOR SALE

INDUSTRIAL PROPERTY



17,639 SF
AVAILABLE



3,796 SF
OFFICE SPACE



19 ft
CLEAR HEIGHT



2
DOCK HIGH DOORS



PROPERTY HIGHLIGHTS

- Great central location with good access to DTLA, Alameda corridor, 710 and 105 Fwys
- Dock high and Ground level loading
- Fenced and secure parking area
- 19' high minimum clearance
- Power 400 amps, 277/480 V 3 phase (buyer to verify)
- Built in 1980

FOR MORE INFORMATION PLEASE CONTACT:

ZACH BOEBEL

ASSOCIATE

P: 213.270.2213 | M: 661.904.8057

zboebel@daumcommercial.com

CADRE #02004825

CASEY MUNGO

EXECUTIVE VICE PRESIDENT | PRINCIPAL

P: 562.207.3307

casey.mungo@daumcommercial.com

CADRE #01490279

Although all information is furnished regarding for sale, rental or financing is from sources deemed reliable, such information has not been verified and no express representation is made nor is any to be implied as to the accuracy thereof, and it is submitted subject to errors, omissions, changes of price, rental or other conditions, prior sale, lease or financing, or withdrawal without notice.



2000

E. 67TH ST.
HUNTINGTON PARK | CA

FOR SALE

INDUSTRIAL PROPERTY



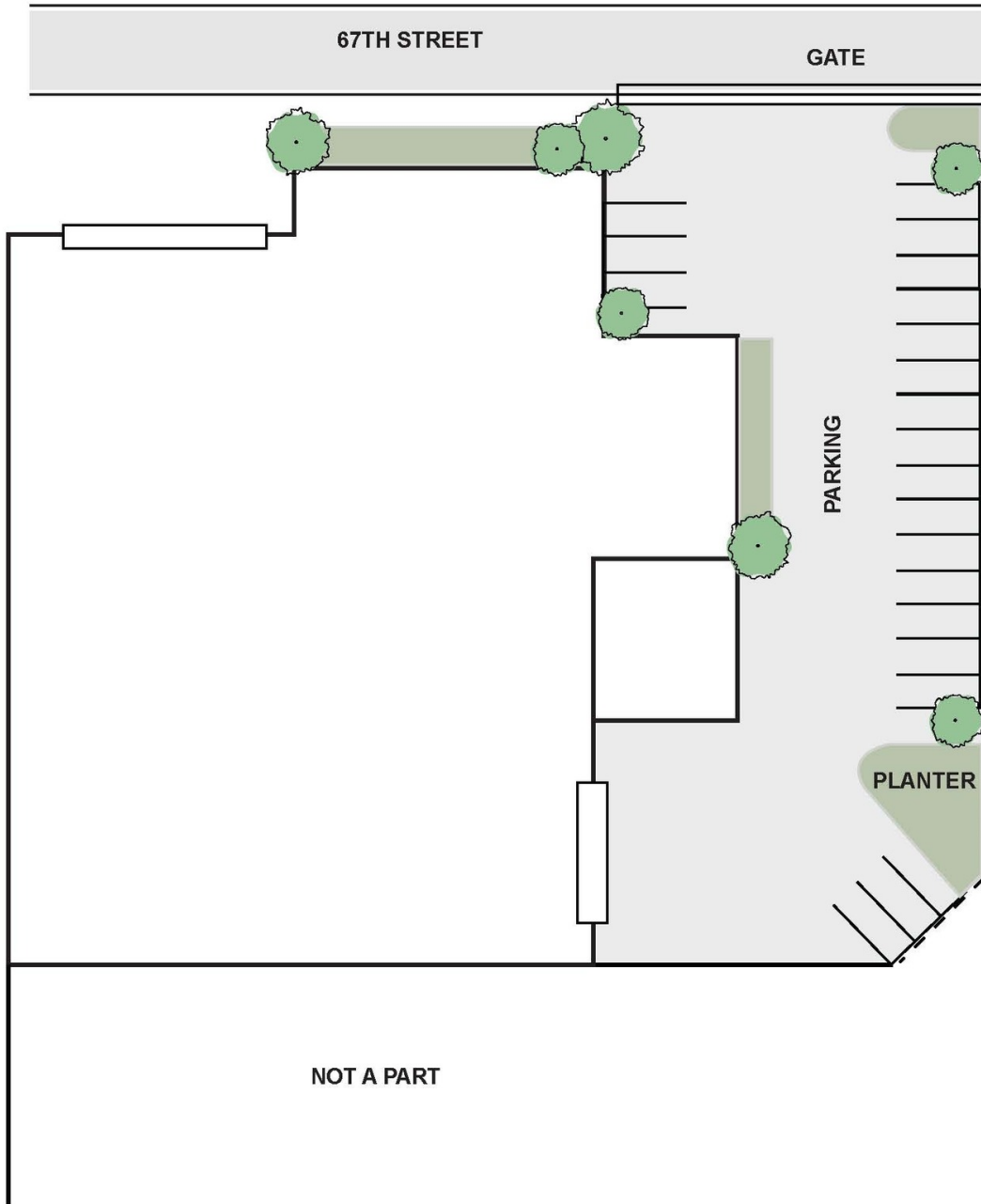
Although all information is furnished regarding for sale, rental or financing is from sources deemed reliable, such information has not been verified and no express representation is made nor is any to be implied as to the accuracy thereof, and it is submitted subject to errors, omissions, changes of price, rental or other conditions, prior sale, lease or financing, or withdrawal without notice.

 **DAUM**
COMMERCIAL REAL ESTATE SERVICES

2000

E. 67TH ST.
HUNTINGTON PARK | CA

FOR SALE
INDUSTRIAL PROPERTY



*NOT TO SCALE

Although all information is furnished regarding for sale, rental or financing is from sources deemed reliable, such information has not been verified and no express representation is made nor is any to be implied as to the accuracy thereof, and it is submitted subject to errors, omissions, changes of price, rental or other conditions, prior sale, lease or financing, or withdrawal without notice.

DAUM
COMMERCIAL REAL ESTATE SERVICES

2000

E. 67TH ST. HUNTINGTON PARK | CA

FOR SALE

INDUSTRIAL PROPERTY



DEMOGRAPHICS

HOUSEHOLDS & INCOME	3 MILES	5 MILES	10 MILES
Total households	42,231	279,769	1,092,583
# of persons per HH	4	3.6	3
Average HH income	\$61,633	\$66,710	\$83,285
Average house value	\$453,964	\$472,068	\$636,835

* Demographic data derived from 2020 ACS - US Census

TRAFFIC COUNT

COLLECTION STREET	CROSS STREET	TRAFFIC VOLUME	LAST MEASURED	DISTANCE
S Alameda St	E 67th St S	22,500	2022	0.10 mi
Wilmington Ave	E 68th St S	2,439	2022	0.11 mi
Alameda St	Zoe Ave N	2,603	2022	0.13 mi

* Traffic Count data derived from CoStar

Although all information is furnished regarding for sale, rental or financing is from sources deemed reliable, such information has not been verified and no express representation is made nor is any to be implied as to the accuracy thereof, and it is submitted subject to errors, omissions, changes of price, rental or other conditions, prior sale, lease or financing, or withdrawal without notice.

