

AVAILABLE FOR SUBLEASE

5,000-20,000 SF

2945 E. MARIA ST. RANCHO DOMINGUEZ

UNINCORPORATED LOS ANGELES COUNTY | CA



FOR MORE
INFORMATION,
CONTACT:

CHUCK BRILL

Executive Vice President | Principal
P: 310.538.6710 | M: 310.710.3127
chuck.brill@daumcommercial.com
CA DRE License # 00974481

JAMES REYNOLDS

Associate
P: 310.538.6716 | M: 310.406.6581
jreynolds@daumcommercial.com
CA DRE License # 02179891



Although all information is furnished regarding for sale, rental or financing is from sources deemed reliable, such information has not been verified and no express representation is made nor is any to be implied as to the accuracy thereof, and it is submitted subject to errors, omissions, changes of price, rental or other conditions, prior sale, lease or financing, or withdrawal without notice. All maps courtesy of Google Maps, Bing, and Google Earth. D/AQ Corp. # 01129558

2945 E. MARIA ST.

RANCHO DOMINGUEZ

UNINCORPORATED LOS ANGELES COUNTY | CA

PROPERTY HIGHLIGHTS

- 5,000-20,000 SF of Clean Warehouse
- 1.56 AC Lot Size
- A: 1200, V: 277/480, ø: 3 Power
- 72 Parking Spaces
- 18' Clear Height
- Seven (7) Dock High and One (1) Ground Level Door
- Access throughout the week
- Overflow / Dead Storage Space
- Fenced Lot
- Sublease Through June 2025
(month-to-month available)

FOR MORE INFORMATION, CONTACT:

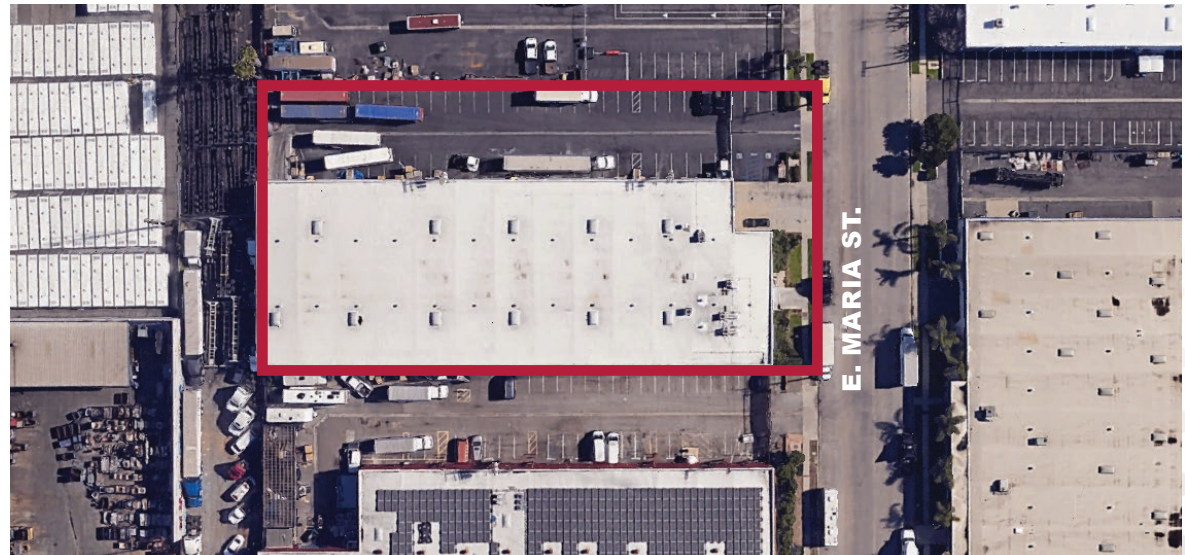
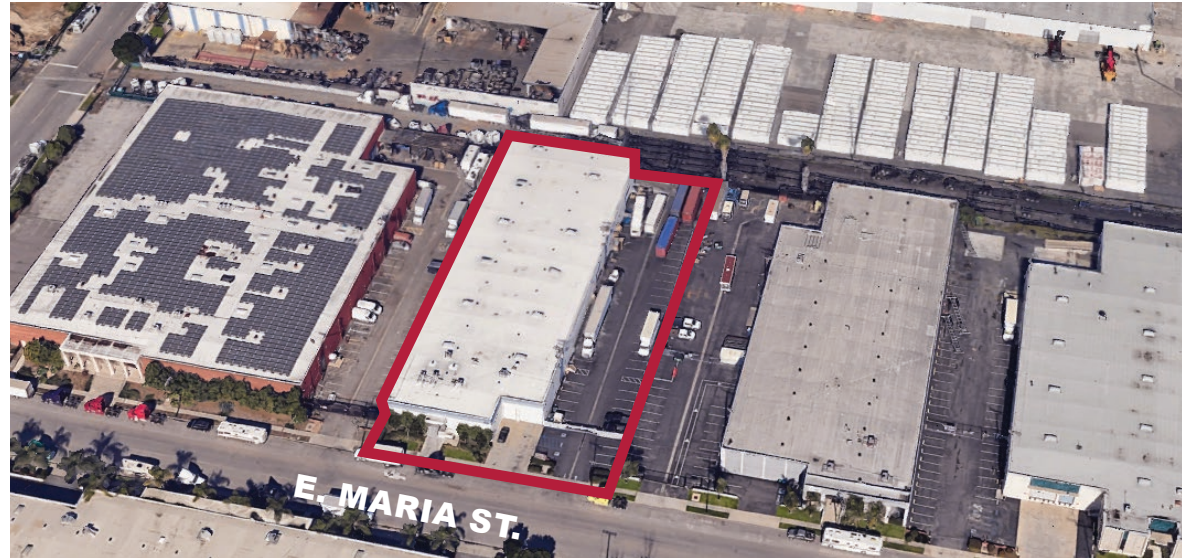
CHUCK BRILL

Executive Vice President | Principal
P: 310.538.6710 | M: 310.710.3127
chuck.brill@daumcommercial.com
CA DRE License # 00974481

JAMES REYNOLDS

Associate
P: 310.538.6716 | M: 310.406.6581
jreynolds@daumcommercial.com
CA DRE License # 02179891

AVAILABLE FOR SUBLEASE | 5,000-20,000 SF

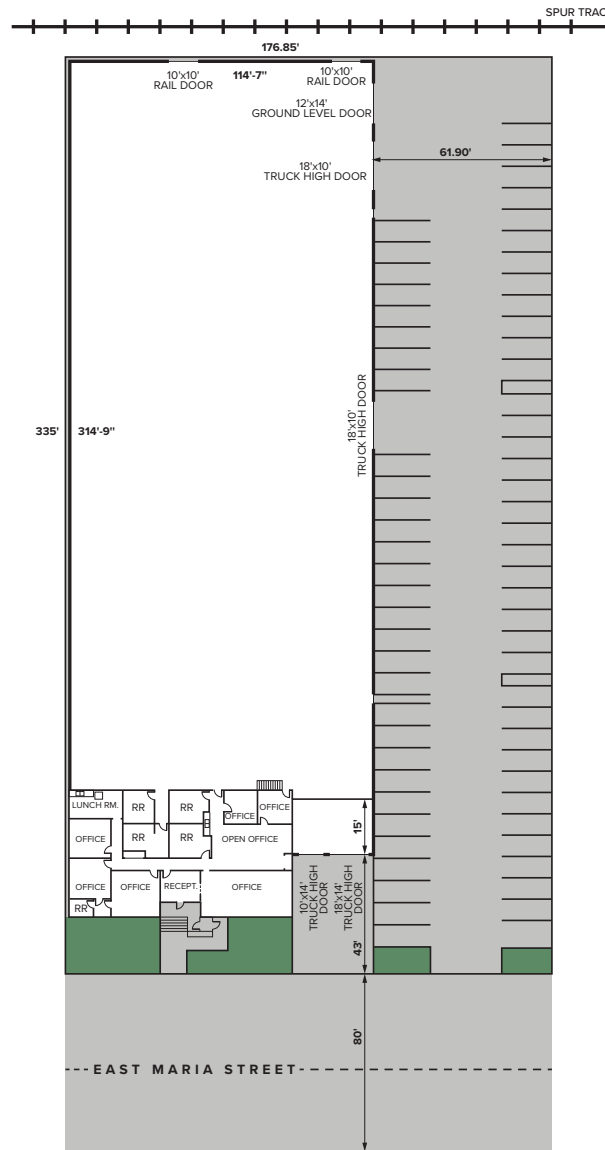


Although all information is furnished regarding for sale, rental or financing is from sources deemed reliable, such information has not been verified and no express representation is made nor is any to be implied as to the accuracy thereof, and it is submitted subject to errors, omissions, changes of price, rental or other conditions, prior sale, lease or financing, or withdrawal without notice. All maps courtesy of Google Maps, Bing, and Google Earth. D/AQ Corp. # 01129558

2945 E. MARIA ST. RANCHO DOMINGUEZ

UNINCORPORATED LOS ANGELES COUNTY | CA

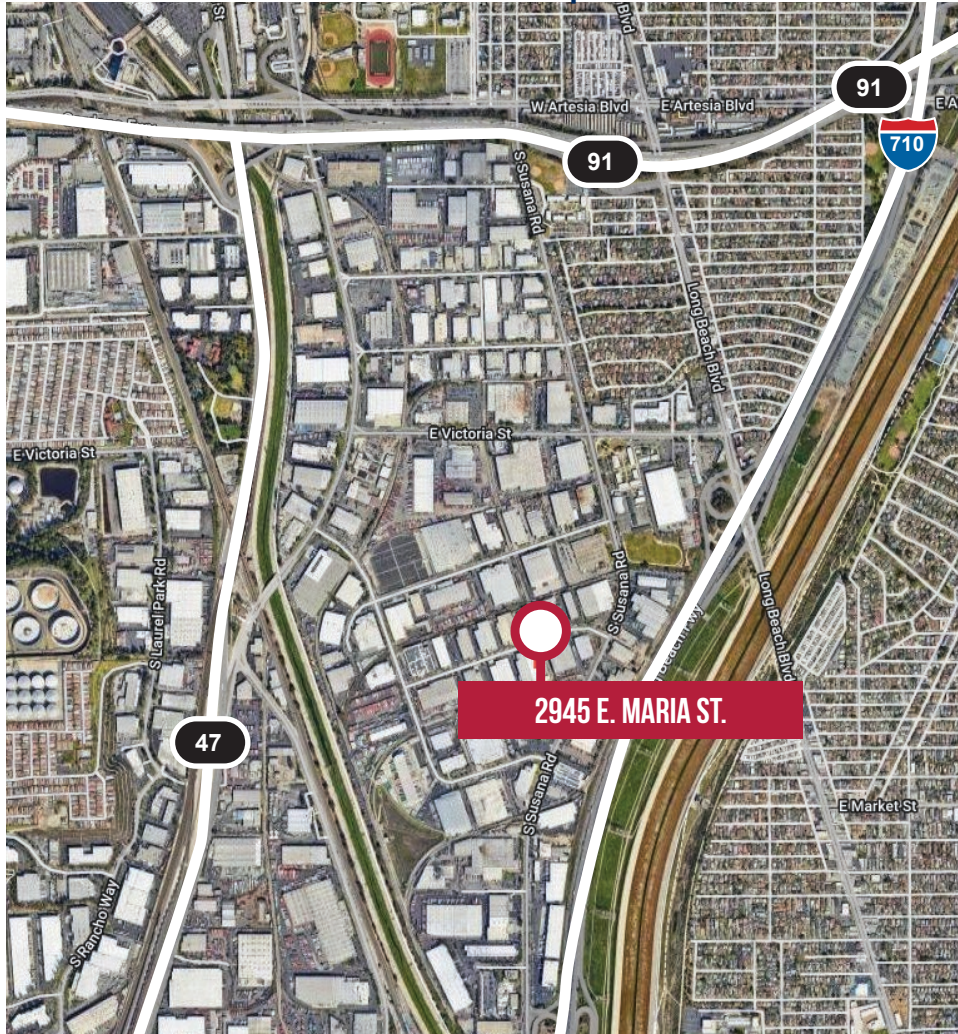
AVAILABLE FOR SUBLEASE | 5,000-20,000 SF



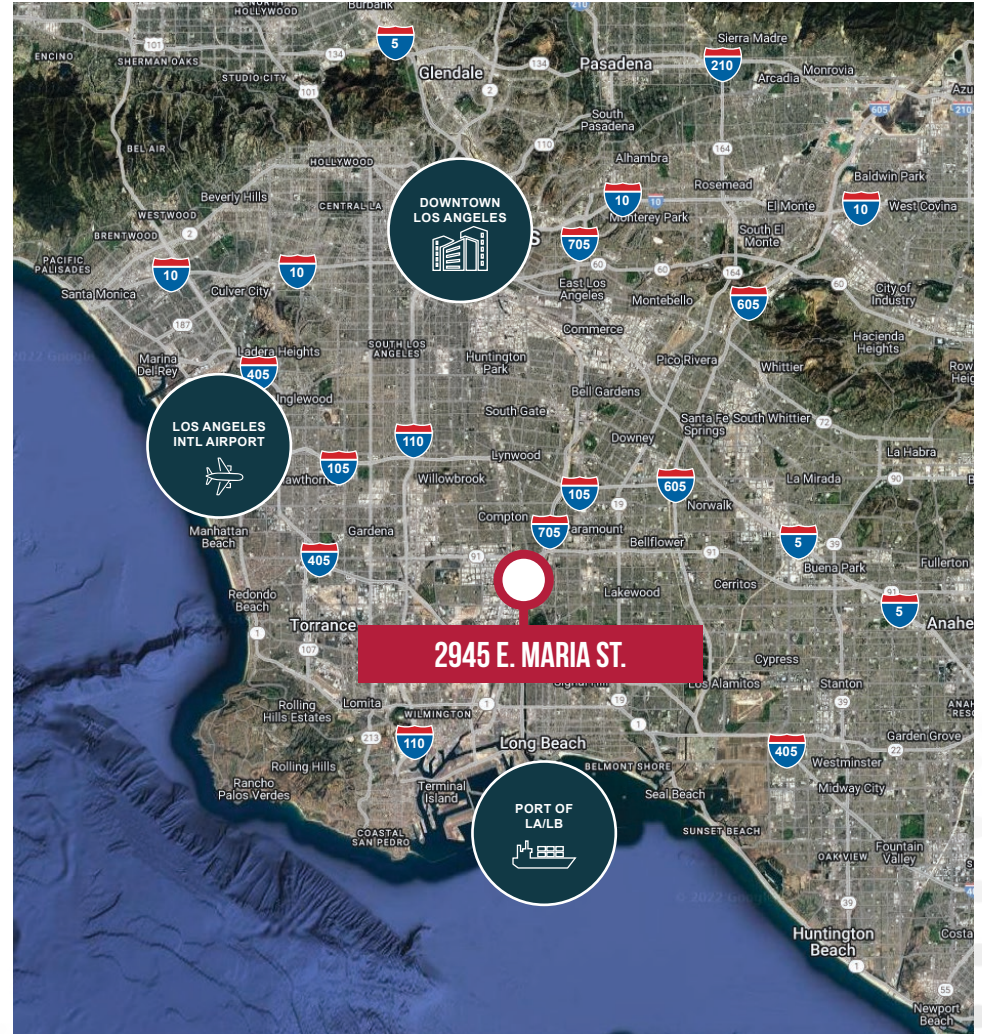
Although all information is furnished regarding for sale, rental or financing is from sources deemed reliable, such information has not been verified and no express representation is made nor is any to be implied as to the accuracy thereof, and it is submitted subject to errors, omissions, changes of price, rental or other conditions, prior sale, lease or financing, or withdrawal without notice. All maps courtesy of Google Maps, Bing, and Google Earth. D/AQ Corp. # 01129558

2945 E. MARIA ST. RANCHO DOMINGUEZ

UNINCORPORATED LOS ANGELES COUNTY | CA



AVAILABLE FOR SUBLEASE | 5,000-20,000 SF



Although all information is furnished regarding for sale, rental or financing is from sources deemed reliable, such information has not been verified and no express representation is made nor is any to be implied as to the accuracy thereof, and it is submitted subject to errors, omissions, changes of price, rental or other conditions, prior sale, lease or financing, or withdrawal without notice. All maps courtesy of Google Maps, Bing, and Google Earth. D/AQ Corp. # 01129558



AVAILABLE FOR SUBLEASE
2945 E. MARIA ST.
RANCHO DOMINGUEZ

UNINCORPORATED LOS ANGELES COUNTY | CA

FOR MORE INFORMATION, CONTACT:

CHUCK BRILL
 Executive Vice President | Principal
 P: 310.538.6710 | M: 310.710.3127
 chuck.brill@daumcommercial.com
 CA DRE License # 00974481

JAMES REYNOLDS
 Associate
 P: 310.538.6716 | M: 310.406.6581
 jreynolds@daumcommercial.com
 CA DRE License # 02179891

2945 E. MARIA ST.

18 Miles

20 MILES

30 MILES

8 Miles

PORT OF LOS ANGELES & LONG BEACH

Although all information is furnished regarding for sale, rental or financing is from sources deemed reliable, such information has not been verified and no express representation is made nor is any to be implied as to the accuracy thereof, and it is submitted subject to errors, omissions, changes of price, rental or other conditions, prior sale, lease or financing, or withdrawal without notice. All maps courtesy of Google Maps, Bing, and Google Earth. D/AQ Corp. # 01129558

