

FOR SALE & LEASE

INDUSTRIAL PROPERTY | 18,604 SF

1011-1015 W ISABEL ST | BURBANK | CA

PROPERTY HIGHLIGHTS:

- Soundstage in Place Currently
- Dock High Loading plus 2 Ground Level Loading Doors
- Private/Secure Yard
- Highly Desirable Burbank Market
- Creative Office Space Already Built Out
- High End Finishes
- 15' Clearance
- Power - A: 2000 V: 240 0: 3 W: 4 (Verify)
- For Lease \$2.20/SF/Month, NNN
- Sale Price TBD



FOR MORE INFORMATION. PLEASE CONTACT:

NATE ORTEGA

Vice President
P: 562.207.3307 | M: 562.544.8258
nortega@daumcre.com
CalDRE #01989242

ZACH BOEBEL

Associate
P: 213.270.2213 | M: 661.904.8057
zboebel@daumcre.com
CalDRE #02004825

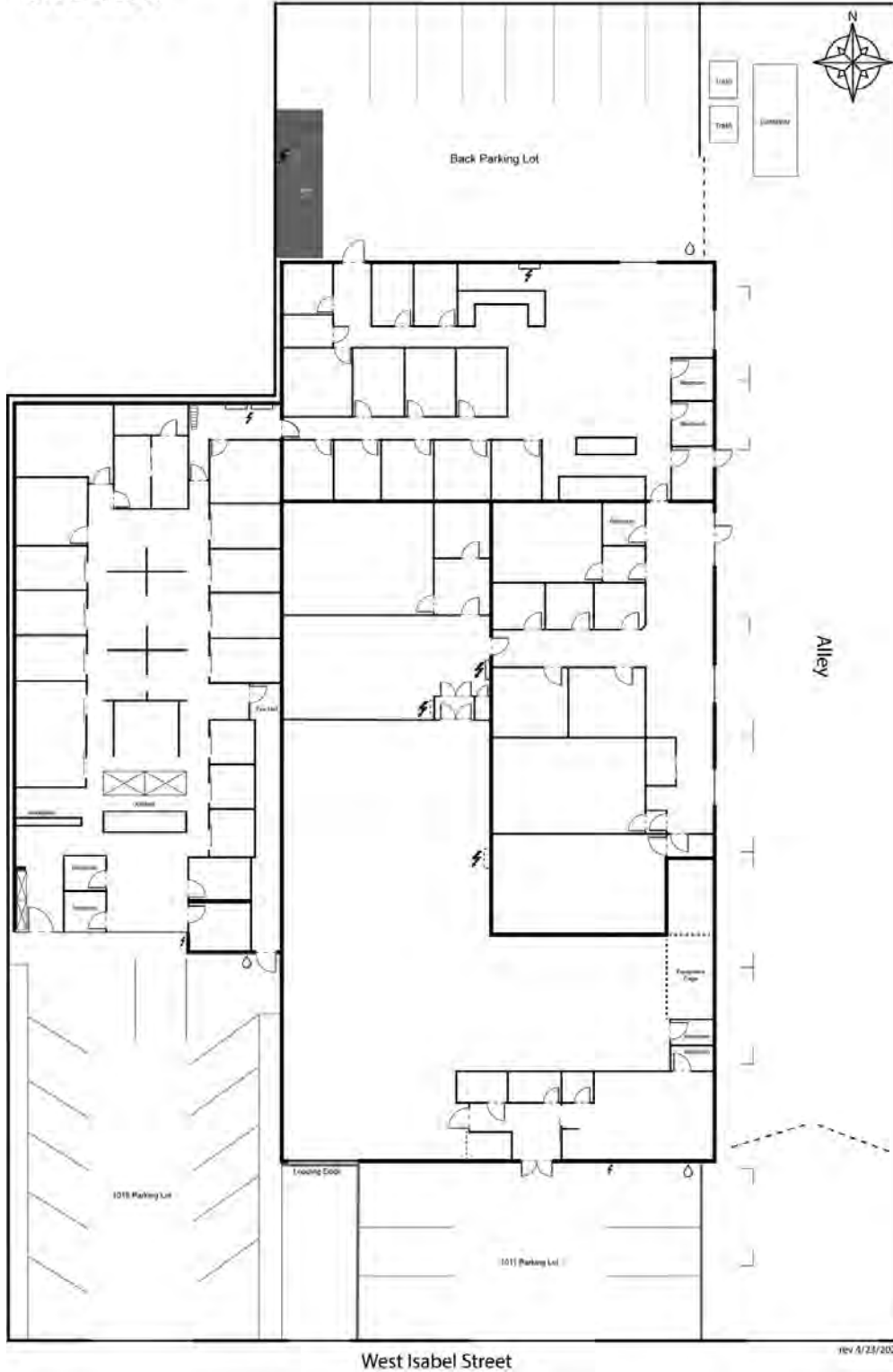
CASEY MUNGO

Executive Vice President | Principal
P: 562.207.3307
cmungo@daumcre.com
CalDRE #01490279



D/AQ Corp. #01129558. Maps Courtesy ©Google & ©Microsoft. Although all information is furnished regarding for sale, rental or financing from sources deemed reliable, such information has not been verified and no express representation is made nor is any to be implied as to the accuracy thereof, and it is submitted subject to errors, omissions, changes of price, rental or other conditions, prior sale, lease or financing, or withdrawal without notice.

SITE PLAN



FOR MORE INFORMATION. PLEASE CONTACT:

NATE ORTEGA

Vice President
 P: 562.207.3307 | M: 562.544.8258
 nortega@daumcre.com
 CalDRE #01989242

ZACH BOEBEL

Associate
 P: 213.270.2213 | M: 661.904.8057
 zboebel@daumcre.com
 CalDRE #02004825

CASEY MUNGO

Executive Vice President | Principal
 P: 562.207.3307
 cmungo@daumcre.com
 CalDRE #01490279



D/AQ Corp. #01129558. Maps Courtesy @Google & @Microsoft. Although all information is furnished regarding for sale, rental or financing from sources deemed reliable, such information has not been verified and no express representation is made nor is any to be implied as to the accuracy thereof, and it is submitted subject to errors, omissions, changes of price, rental or other conditions, prior sale, lease or financing, or withdrawal without notice.

PHOTO GALLERY



FOR MORE INFORMATION. PLEASE CONTACT:

NATE ORTEGA

Vice President
P: 562.207.3307 | M: 562.544.8258
nortega@daumcre.com
CalDRE #01989242

ZACH BOEBEL

Associate
P: 213.270.2213 | M: 661.904.8057
zboebel@daumcre.com
CalDRE #02004825

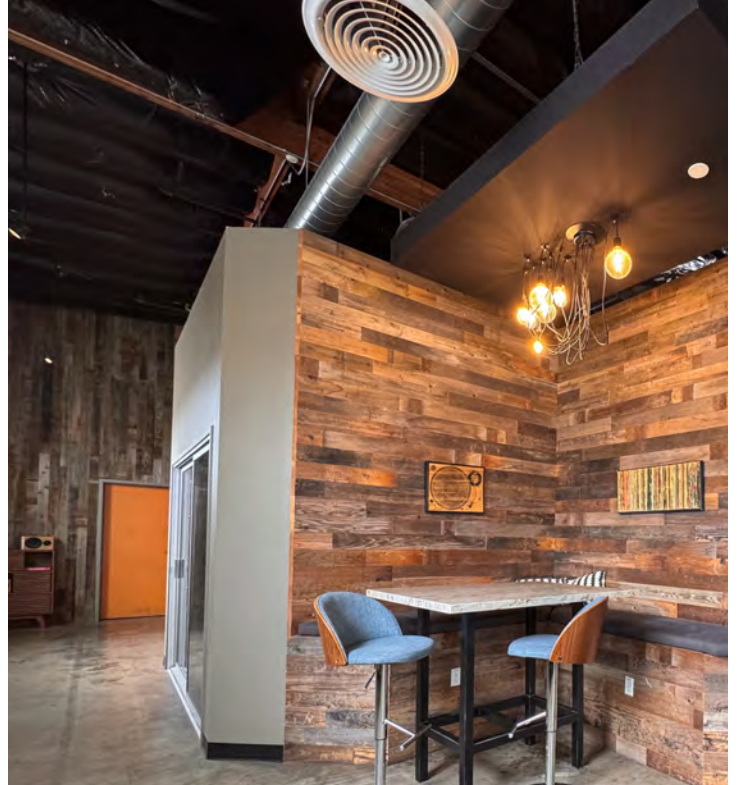
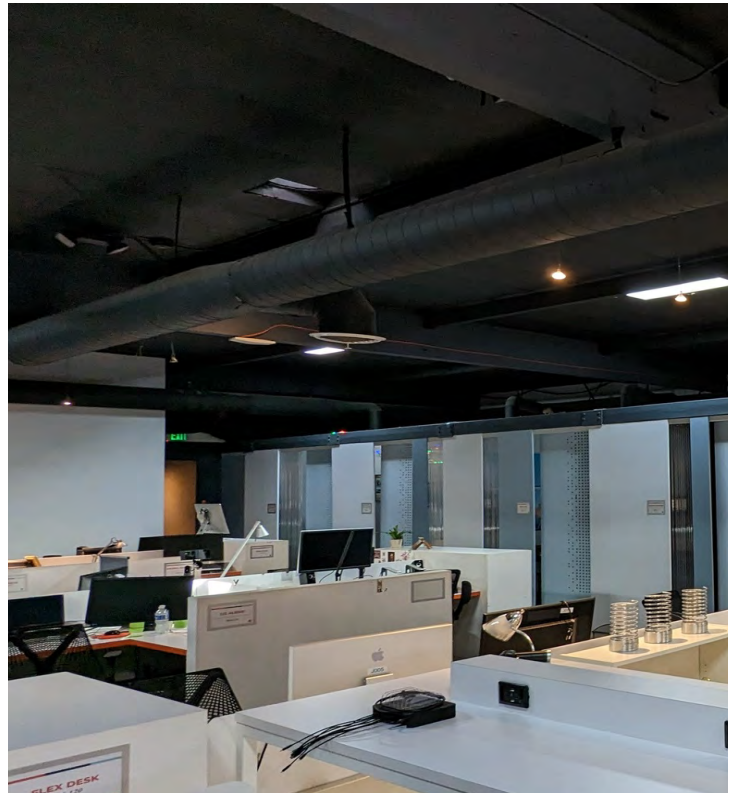
CASEY MUNGO

Executive Vice President | Principal
P: 562.207.3307
cmungo@daumcre.com
CalDRE #01490279



D/AQ Corp. #01129558. Maps Courtesy @Google & @Microsoft. Although all information is furnished regarding for sale, rental or financing from sources deemed reliable, such information has not been verified and no express representation is made nor is any to be implied as to the accuracy thereof, and it is submitted subject to errors, omissions, changes of price, rental or other conditions, prior sale, lease or financing, or withdrawal without notice.

www.daumcommercial.com



FOR MORE INFORMATION. PLEASE CONTACT:

NATE ORTEGA

Vice President
 P: 562.207.3307 | M: 562.544.8258
 nortega@daumcre.com
 CalDRE #01989242

ZACH BOEBEL

Associate
 P: 213.270.2213 | M: 661.904.8057
 zboebel@daumcre.com
 CalDRE #02004825

CASEY MUNGO

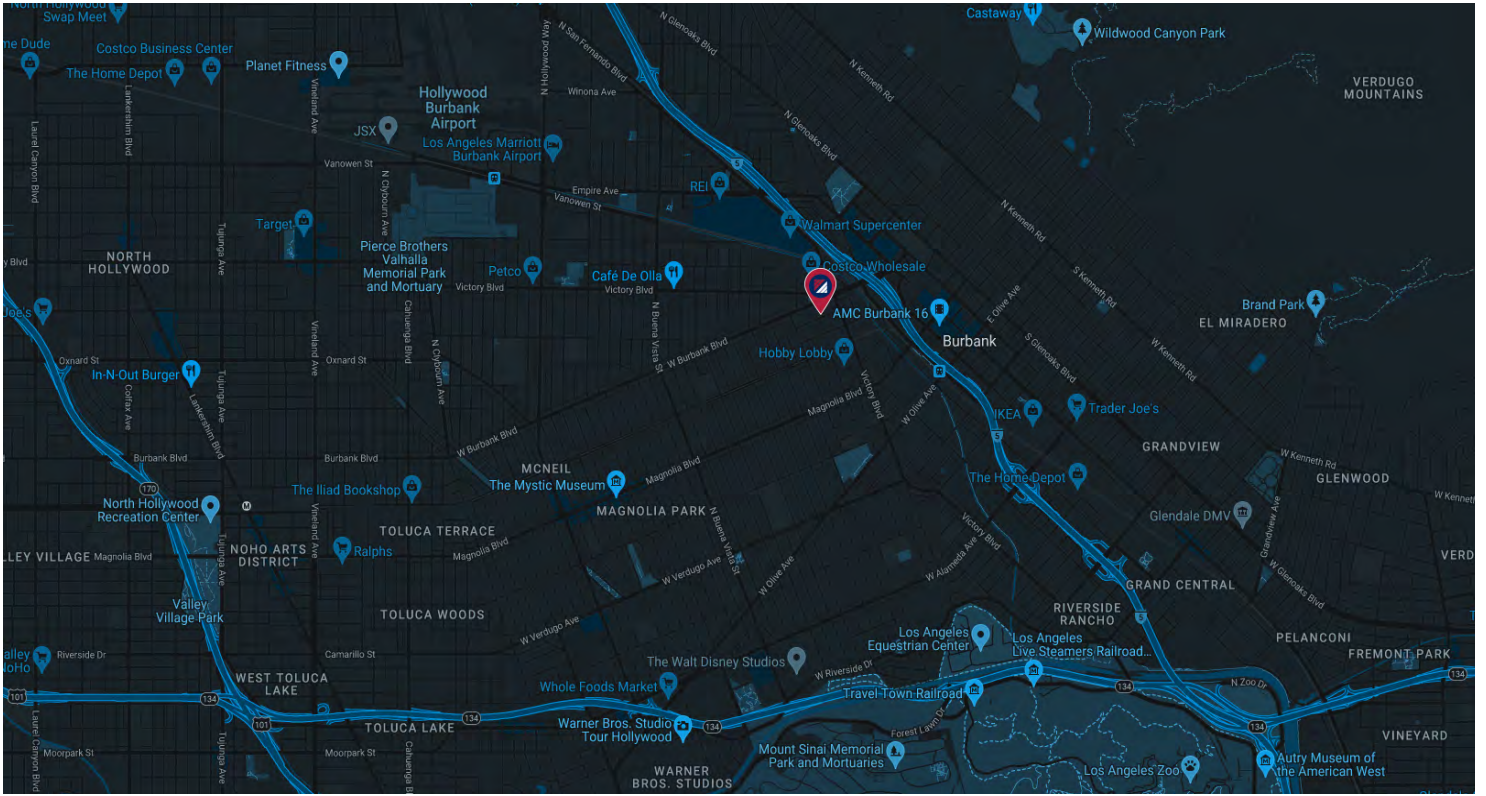
Executive Vice President | Principal
 P: 562.207.3307
 cmungo@daumcre.com
 CalDRE #01490279



D/AQ Corp. #01129558. Maps Courtesy @Google & @Microsoft. Although all information is furnished regarding for sale, rental or financing from sources deemed reliable, such information has not been verified and no express representation is made nor is any to be implied as to the accuracy thereof, and it is submitted subject to errors, omissions, changes of price, rental or other conditions, prior sale, lease or financing, or withdrawal without notice.

www.daumcommercial.com

LOCATION MAP



FOR MORE INFORMATION. PLEASE CONTACT:

NATE ORTEGA
 Vice President
 P: 562.207.3307 | M: 562.544.8258
 nortega@daumcre.com
 CalDRE #01989242

ZACH BOEBEL
 Associate
 P: 213.270.2213 | M: 661.904.8057
 zboebel@daumcre.com
 CalDRE #02004825

CASEY MUNGO
 Executive Vice President | Principal
 P: 562.207.3307
 cmungo@daumcre.com
 CalDRE #01490279



D/AQ Corp. #01129558. Maps Courtesy ©Google & ©Microsoft. Although all information is furnished regarding for sale, rental or financing from sources deemed reliable, such information has not been verified and no express representation is made nor is any to be implied as to the accuracy thereof, and it is submitted subject to errors, omissions, changes of price, rental or other conditions, prior sale, lease or financing, or withdrawal without notice.