



2201

S. SANTA FE AVENUE

COMPTON | CA

164,000 SF AVAILABLE FOR LEASE

CONCRETE PAVED/FENCED TRUCK YARD

FOR MORE INFORMATION, CONTACT:

Michael Chase

Vice President

949.341.4513

mchase@daumcommercial.com

CA License #0207114

Krishna Shegran

Vice President

949.341.4512

kshegran@daumcommercial.com

CA License #0203891

Anthony Bergeman 

Executive Vice President | Principal

949.341.4511

abergeman@daumcommercial.com

CA License #01841828

Jack Stone

Associate

310.538.6722

jstone@daumcommercial.com

CA License #02070402

2201

S. SANTA FE AVENUE

COMPTON | CA

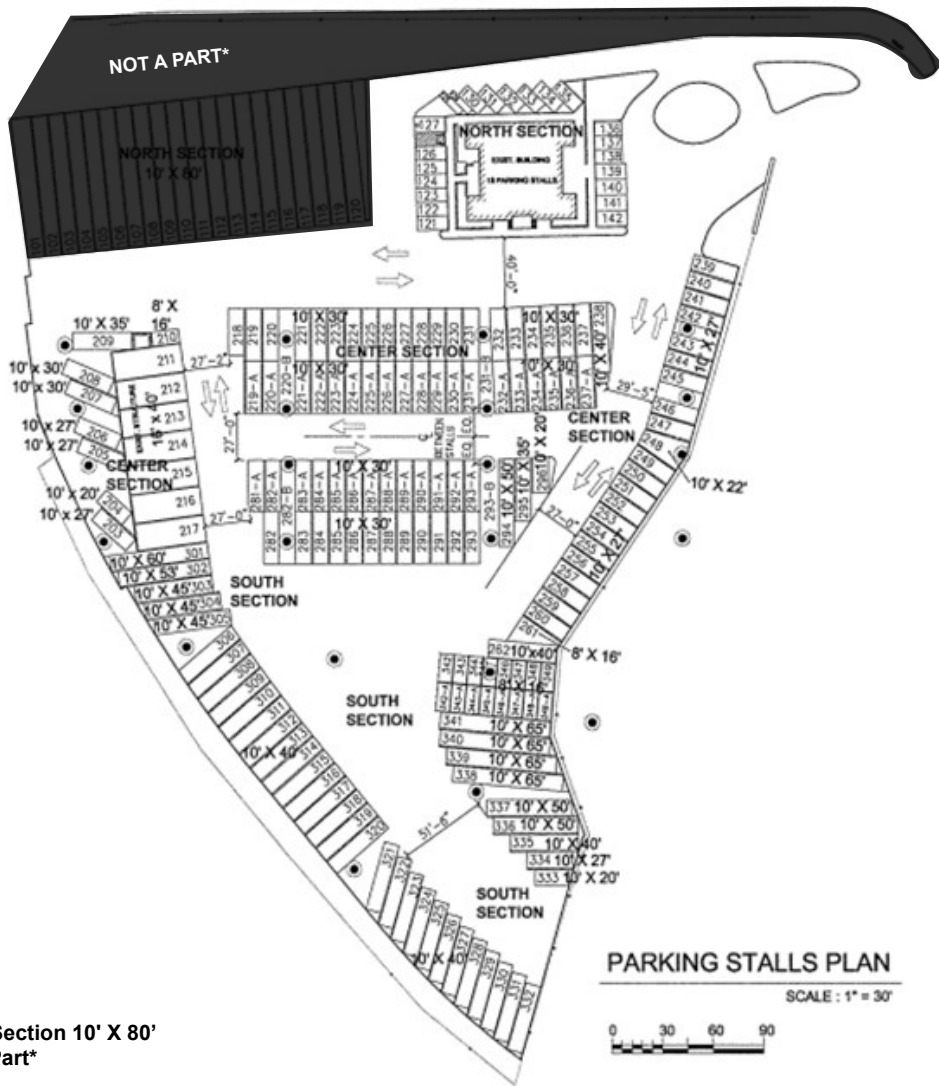
NOT A PART

164,000 SF AVAILABLE FOR LEASE

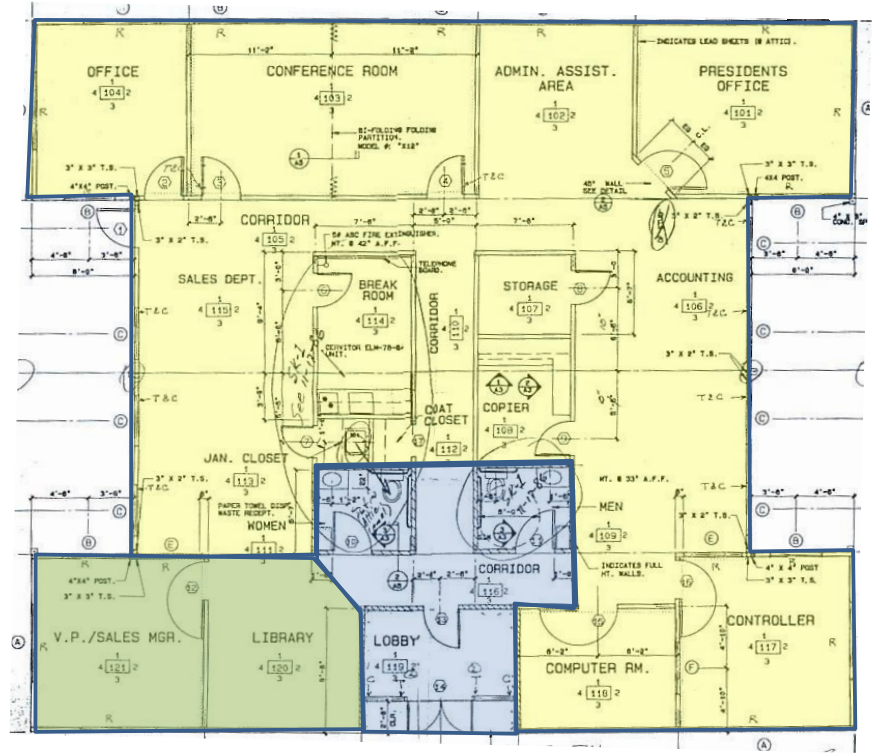
CONCRETE PAVED/FENCED TRUCK YARD

PROPERTY FEATURES

- Rare Concrete Paved Land Site
- Fully Fenced with Security Lighting
- Immediate 91 Fwy Access - Near 710/110/405 Freeways
- 8 Inch Concrete Paved Yard
- 3,500 SF Office Building
- Approximately 1 Acre of Protected Covered Parking
- Only 6 Miles from the Ports of Los Angeles



OFFICE LAYOUT



Yellow = Tenant Area
Blue = Shared Area

2201
S. SANTA FE AVENUE
COMPTON | CA

FOR MORE INFORMATION, CONTACT:

Michael Chase
Vice President
949.341.4513
mchase@daumcommercial.com
CA License #0207114

Krishna Shegran
Vice President
949.341.4512
kshegran@daumcommercial.com
CA License #0203891

Anthony Bergeman SIOR
Executive Vice President | Principal
949.341.4511
abergeman@daumcommercial.com
CA License #01841828

Jack Stone
Associate
310.538.6722
jstone@daumcommercial.com
CA License #02070402



SOURCE: WCL Consulting 2024 SoCal Container Drayage Rate Survey Report

2201
S. SANTA FE AVENUE
 COMPTON | CA

FOR MORE INFORMATION, CONTACT:

Michael Chase
 Vice President
 949.341.4513
 mchase@daumcommercial.com
 CA License #0207114

Krishna Shegran
 Vice President
 949.341.4512
 kshegran@daumcommercial.com
 CA License #0203891

Anthony Bergeman 
 Executive Vice President | Principal
 949.341.4511
 abergeman@daumcommercial.com
 CA License #01841828

Jack Stone
 Associate
 310.538.6722
 jstone@daumcommercial.com
 CA License #02070402

D/AQ Corp. #01129558. Maps Courtesy ©Google & ©Microsoft. Although all information is furnished regarding for sale, rental or financing from sources deemed reliable, such information has not been verified and no express representation is made nor is any to be implied as to the accuracy thereof, and it is submitted subject to errors, omissions, changes of price, rental or other conditions, prior sale, lease or financing, or withdrawal without notice.



AERIAL MAP

17 MILES TO LAX

6 MILES TO PORTS OF LA/LB

2201
S. SANTA FE AVENUE
 COMPTON | CA

FOR MORE INFORMATION, CONTACT:

Michael Chase
 Vice President
 949.341.4513
 mchase@daumcommercial.com
 CA License #0207114

Krishna Shegran
 Vice President
 949.341.4512
 kshegran@daumcommercial.com
 CA License #0203891

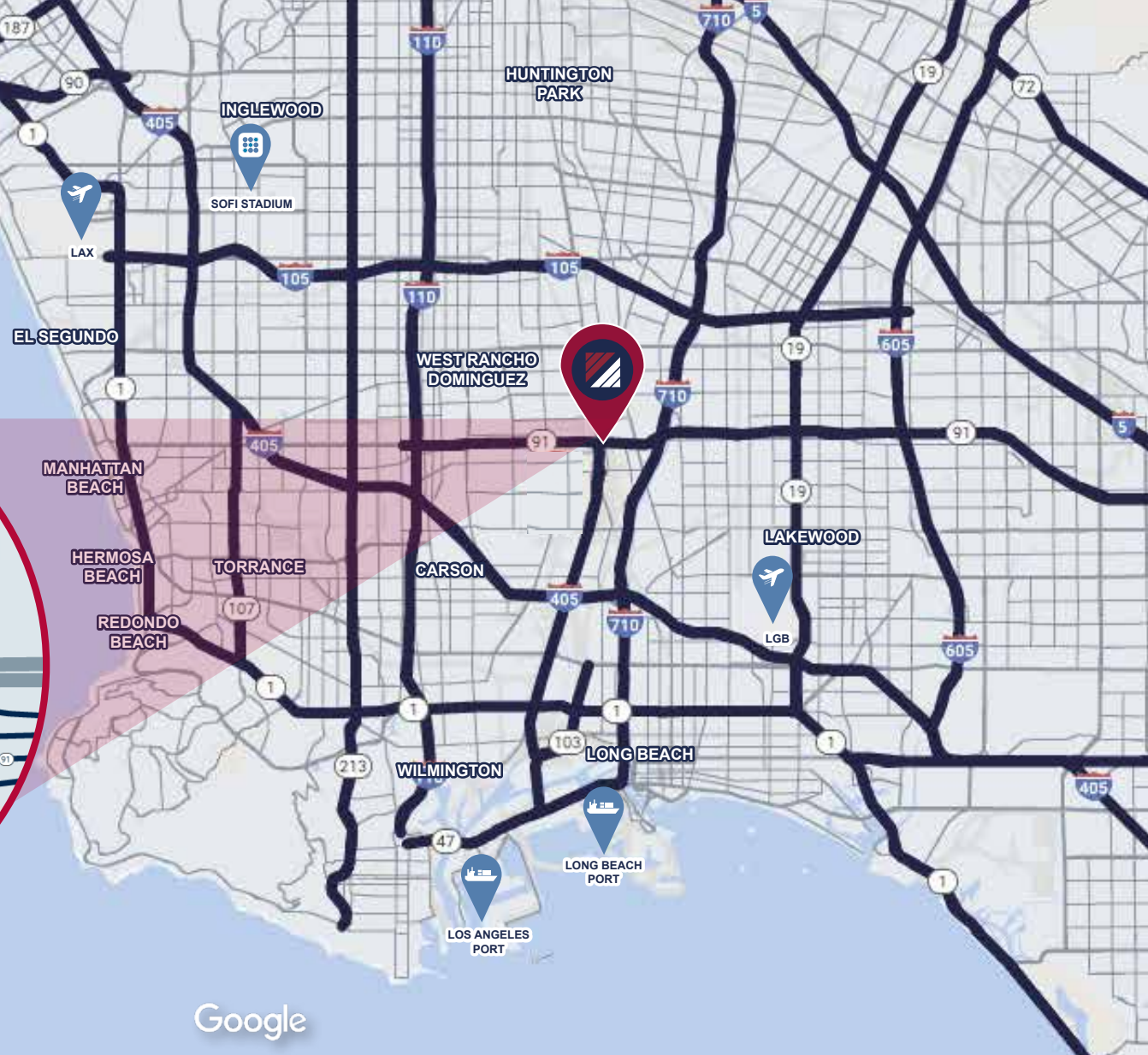
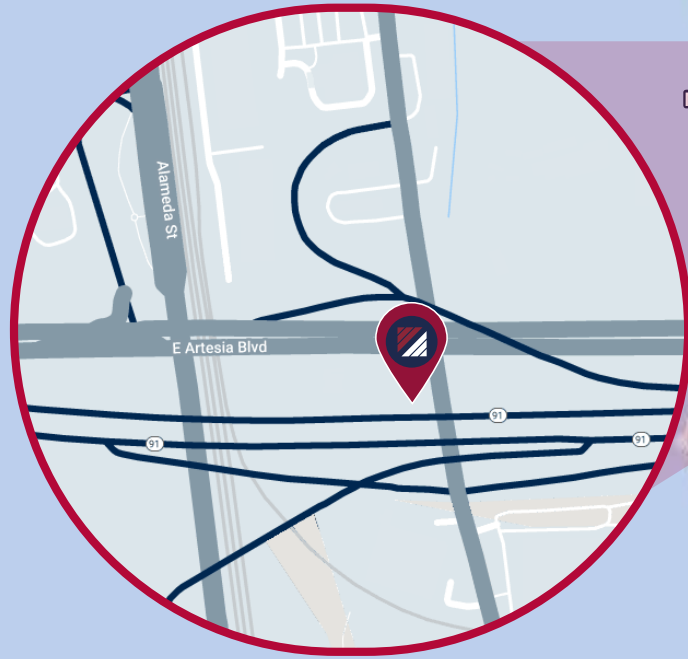
Anthony Bergeman 
 Executive Vice President | Principal
 949.341.4511
 abergeman@daumcommercial.com
 CA License #01841828

Jack Stone
 Associate
 310.538.6722
 jstone@daumcommercial.com
 CA License #02070402

164,000 SF AVAILABLE FOR LEASE

CONCRETE PAVED/FENCED TRUCK YARD

LOCATION MAP



Google

2201
S. SANTA FE AVENUE
COMPTON | CA

FOR MORE INFORMATION, CONTACT:

Michael Chase
Vice President
949.341.4513
mchase@daumcommercial.com
CA License #0207114

Krishna Shegran
Vice President
949.341.4512
kshegran@daumcommercial.com
CA License #0203891

Anthony Bergeman SIOR
Executive Vice President | Principal
949.341.4511
abergeman@daumcommercial.com
CA License #01841828

Jack Stone
Associate
310.538.6722
jstone@daumcommercial.com
CA License #02070402

D/AQ Corp. #01129558. Maps Courtesy ©Google & ©Microsoft. Although all information is furnished regarding for sale, rental or financing from sources deemed reliable, such information has not been verified and no express representation is made nor is any to be implied as to the accuracy thereof, and it is submitted subject to errors, omissions, changes of price, rental or other conditions, prior sale, lease or financing, or withdrawal without notice.

