

FOR SALE OR LEASE

± 1.21 ACRES OF INDUSTRIAL LAND

948

**E. NORMAN RD.
SAN BERNARDINO, CA**



FOR MORE INFORMATION, CONTACT:

MARK SCHAFER

Executive Vice President

O: 909.652.9052 | M: 949.923.9890

E: mark.schafer@daumcommercial.com

CA DRE #01902664

CODY WOLF

Executive Vice President

P: 909.912.0018 | M: 909.996.5760

E: cody.wolf@daumcommercial.com

CA DRE #01997598

NICK CANTU

Associate Vice President

P: 909.652.9054 | M: 714.787.9454

E: ncantu@daumcommercial.com

CA DRE #02016719



PROPERTY HIGHLIGHTS



± 1.21 Acres
Industrial Land



I-10 & I-215 Freeway
Easy Access



**Centrally
Located**



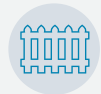
**Ideal Truck and
Container Yard**



SFR
Office



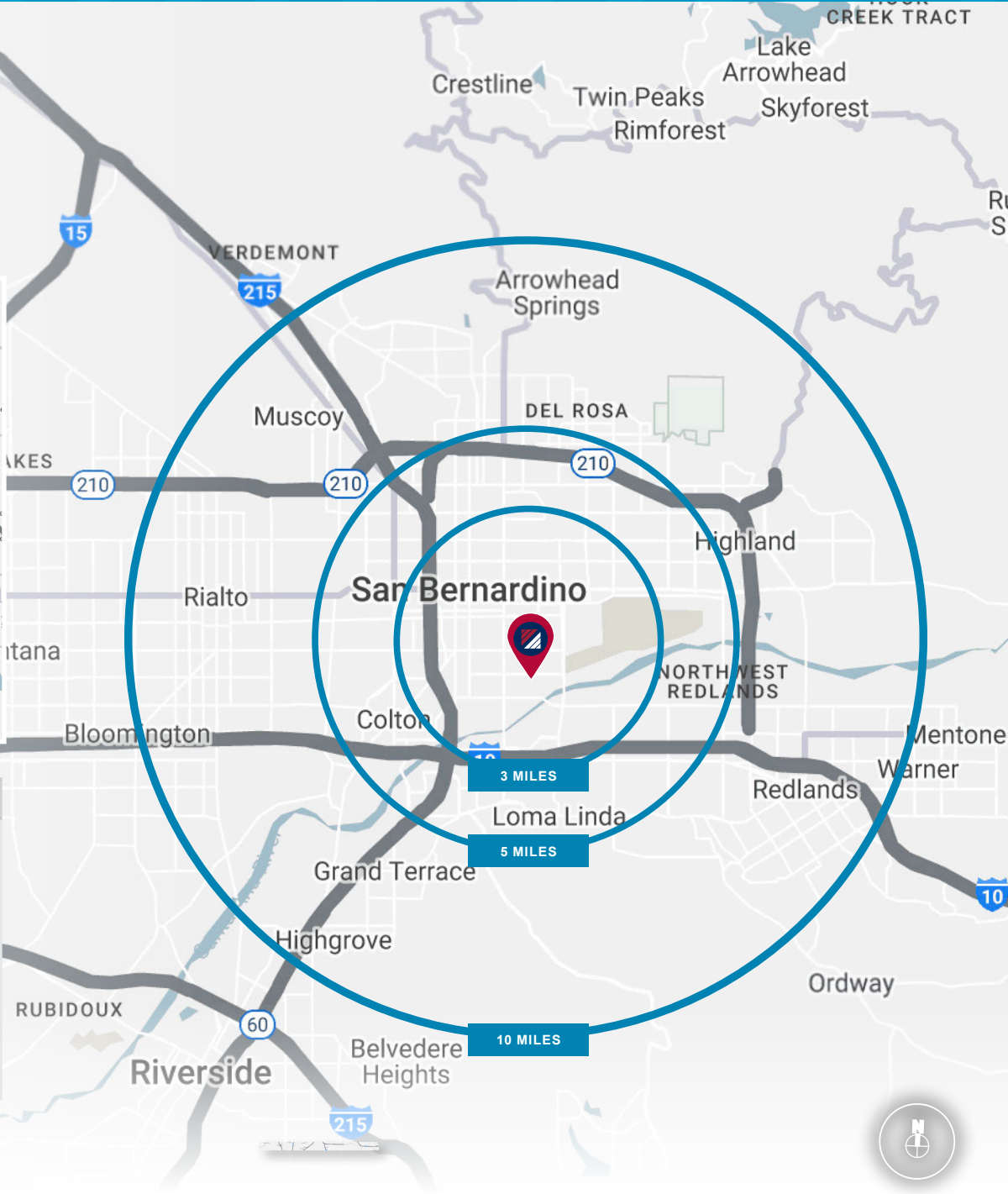
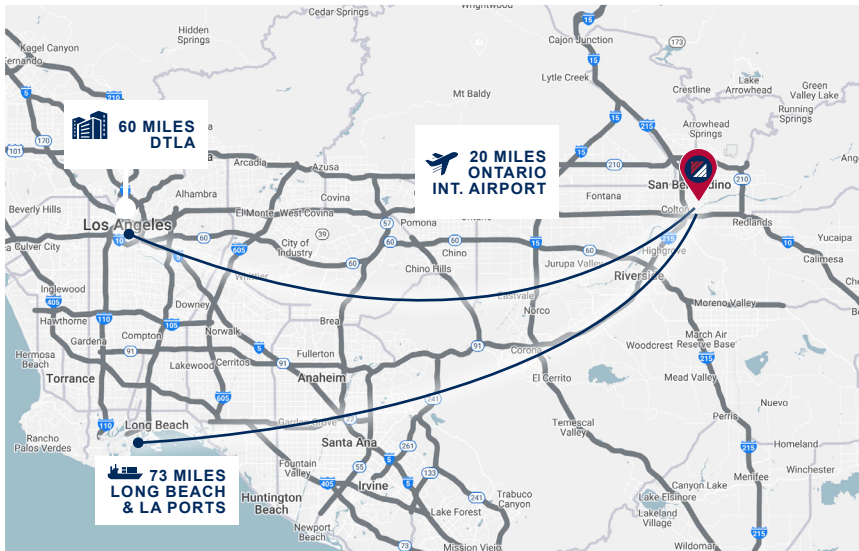
**Crushed
Gravel Base**



Fully Secured

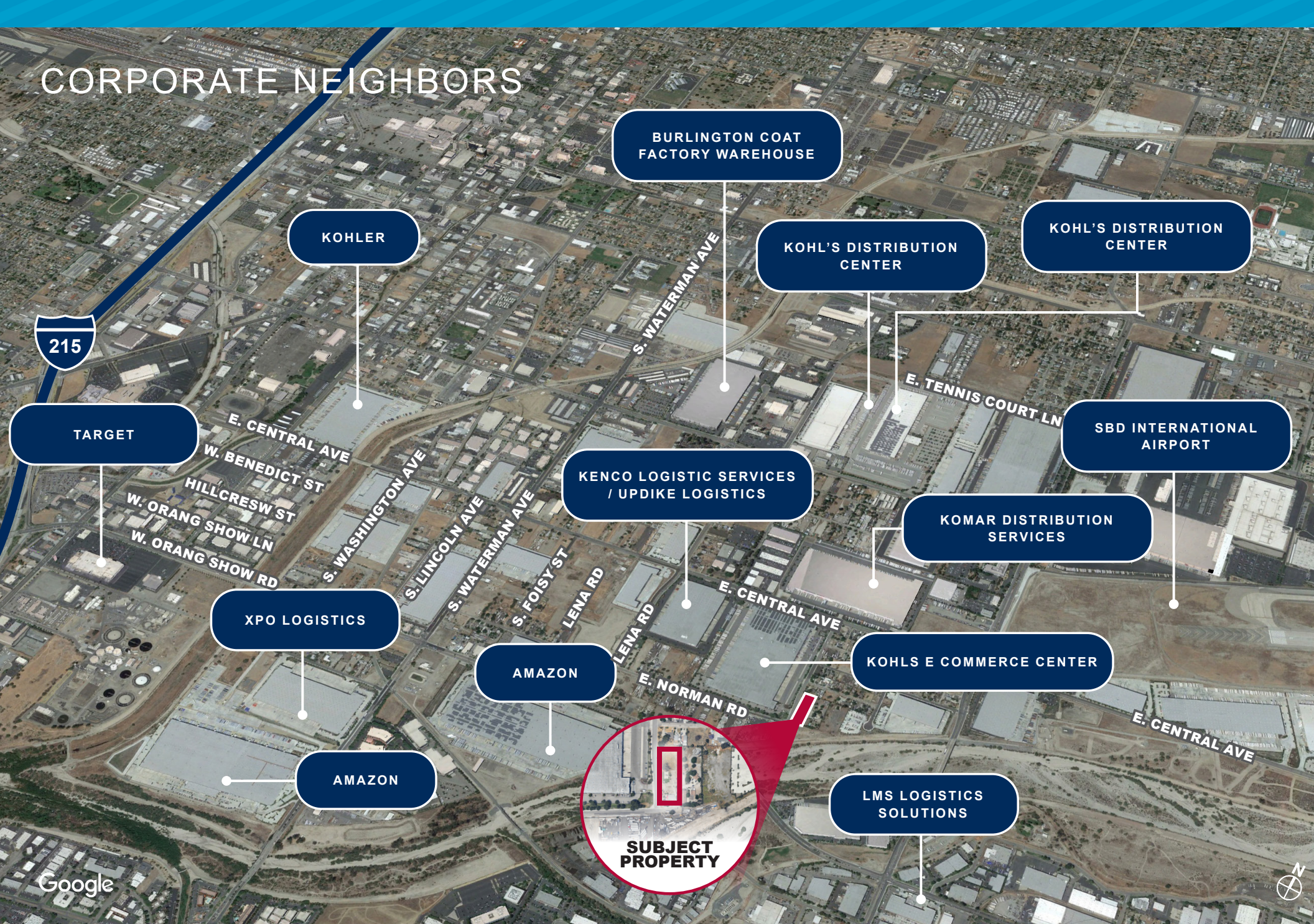


LOCATION



DEMOGRAPHICS	3 MI.	5 MI.	10 MI.
2010 Population	87,967	292,310	776,560
2023 Population	96,907	319,408	833,910
2028 Population Projection	98,726	324,985	844,007
Avg Household Income	\$68,377	\$73,540	\$86,991
Median Household Income	\$52,013	\$57,378	\$68,980
Total Specified Consumer Spending (\$)	\$792.6M	\$2.8B	\$8.2B

CORPORATE NEIGHBORS



KOHLER

BURLINGTON COAT
FACTORY WAREHOUSE

KOHL'S DISTRIBUTION
CENTER

KOHL'S DISTRIBUTION
CENTER

TARGET

SBD INTERNATIONAL
AIRPORT

KENCO LOGISTIC SERVICES
/ UPMIKE LOGISTICS

KOMAR DISTRIBUTION
SERVICES

XPO LOGISTICS

AMAZON

KOHL'S E COMMERCE CENTER

AMAZON

**SUBJECT
PROPERTY**

LMS LOGISTICS
SOLUTIONS

Google