

**SELLER FINANCING
AVAILABLE**



AVAILABLE FOR SALE

MS MOUNTAIN VIEW BUSINESS PARK

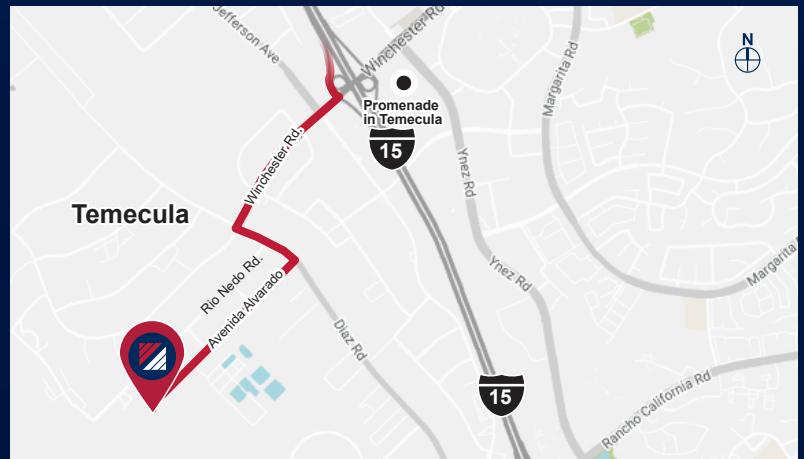
BLDG.
THIRTEEN

13

4 2 6 7 2 A V E N I D A A L V A R A D O | T E M E C U L A | C A

PROPERTY HIGHLIGHTS

- ±19,727 SF Freestanding Industrial Building For Sale
- Office = ±1,694 SF
- Warehouse = ±18,033 SF
- 32 Parking Spaces
- 277/480 volts, 800 AMPS
- ±24' Clear Height
- ESFR K25/20-PSI Sprinklers
- 2 Dock High Doors (9'x10')
- 1 Ground Level Door (12'x15')
- Zoned: Light Industrial
- Secured Yard
- Ready for Immediate Occupancy



FOR MORE INFORMATION, CONTACT:

NOAH SAMARIN

P: 909.912.0007 | M: 714.812.1289
noah.samarin@daumcommercial.com
CADRE #01755814

NICK CANTU

P: 909.652.9054 | M: 714.787.9454
ncantu@daumcommercial.com
CADRE #02016719



Although all information is furnished regarding for sale, rental or financing is from sources deemed reliable, such information has not been verified and no express representation is made nor is any to be implied as to the accuracy thereof, and it is submitted subject to errors, omissions, changes of price, rental or other conditions, prior sale, lease or financing, or withdrawal without notice. All Maps provided courtesy of Google Maps, Bing Maps, and Google Earth. D/AQ Corp. # 01129558

AVAILABLE FOR SALE

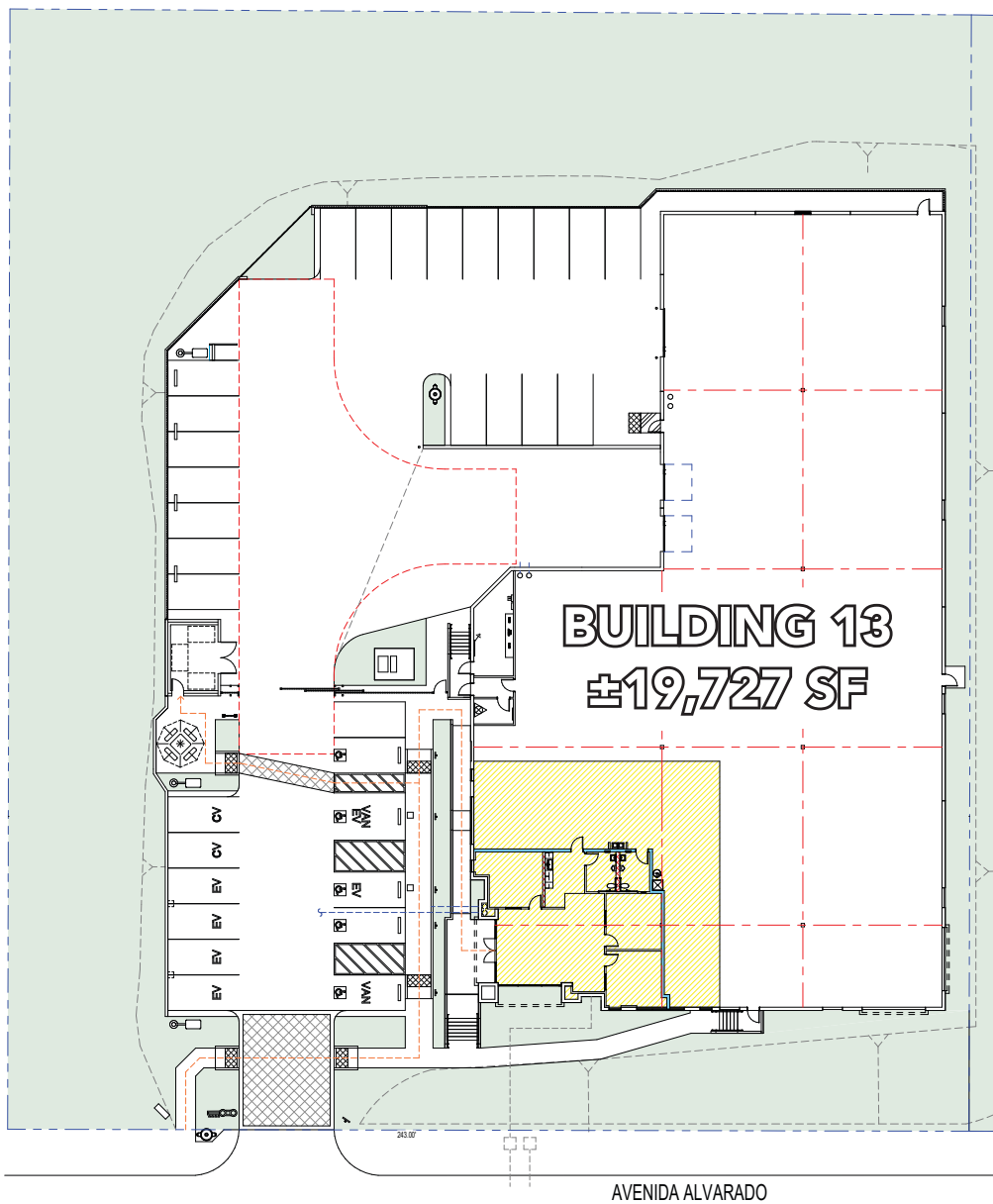
MS MOUNTAIN VIEW BUSINESS PARK

BLDG.
THIRTEEN

13

SITE & OFFICE PLAN

4 2 6 7 2 AVENIDA ALVARADO | TEMECULA | CA



FOR MORE INFORMATION, CONTACT:

NOAH SAMARIN

P: 909.912.0007 | M: 714.812.1289
noah.samarin@daumcommercial.com
CADRE #01755814

NICK CANTU

P: 909.652.9054 | M: 714.787.9454
ncantu@daumcommercial.com
CADRE #02016719



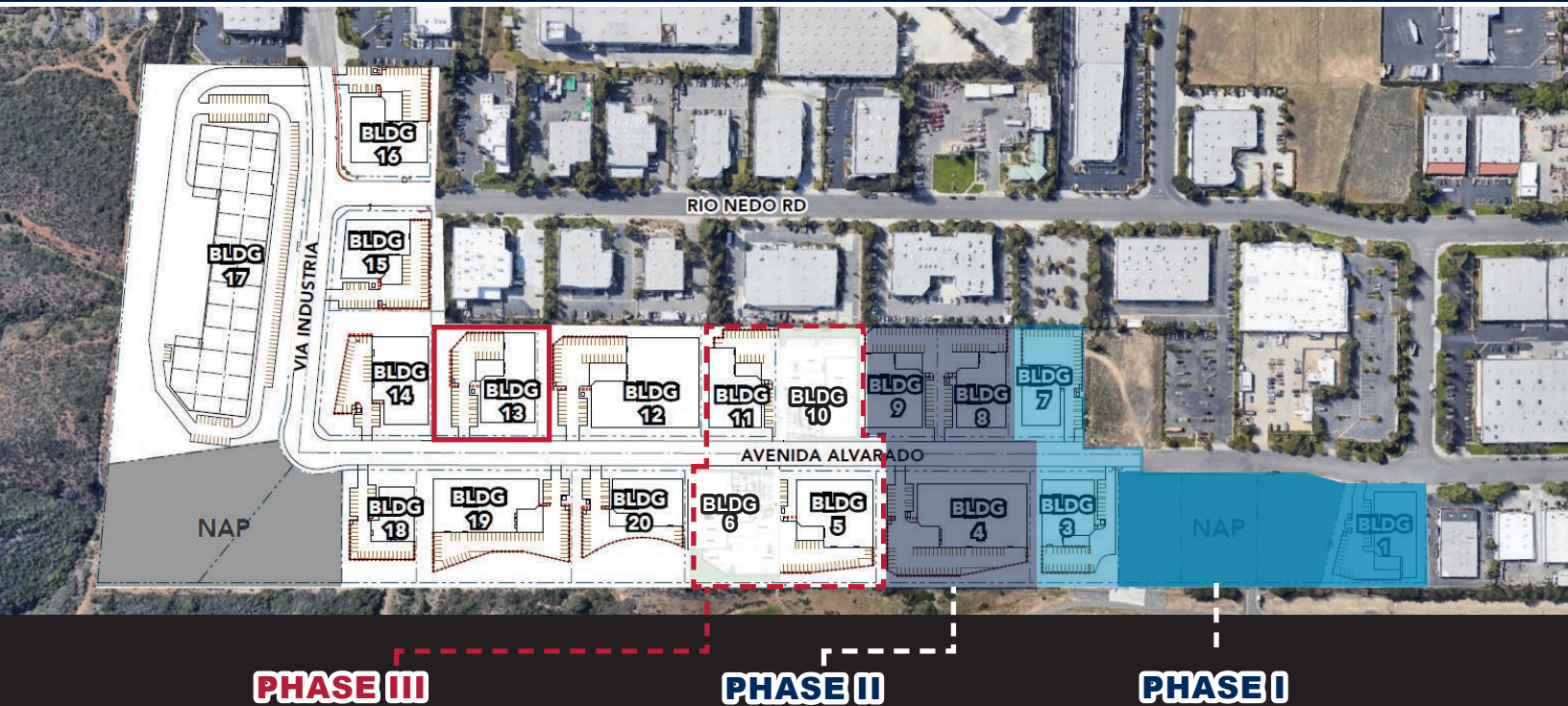
Although all information is furnished regarding for sale, rental or financing is from sources deemed reliable, such information has not been verified and no express representation is made nor is any to be implied as to the accuracy thereof, and it is submitted subject to errors, omissions, changes of price, rental or other conditions, prior sale, lease or financing, or withdrawal without notice. All Maps provided courtesy of Google Maps, Bing Maps, and Google Earth. D/AQ Corp. # 01129558

AVAILABLE FOR SALE

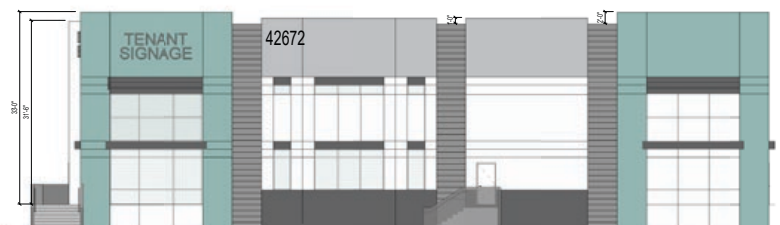
MS MOUNTAIN VIEW BUSINESS PARK

BLDG. THIRTEEN

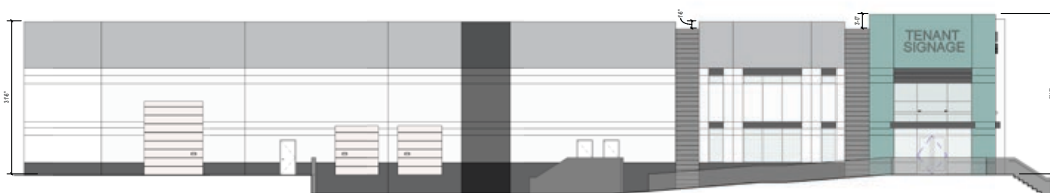
42672 AVENIDA ALVARADO | TEMECULA | CA



SOUTH ELEVATION



WEST ELEVATION



FOR MORE INFORMATION, CONTACT:

NOAH SAMARIN

P: 909.912.0007 | M: 714.812.1289
noah.samarin@daumcommercial.com
CADRE #01755814

NICK CANTU

P: 909.652.9054 | M: 714.787.9454
ncantu@daumcommercial.com
CADRE #02016719



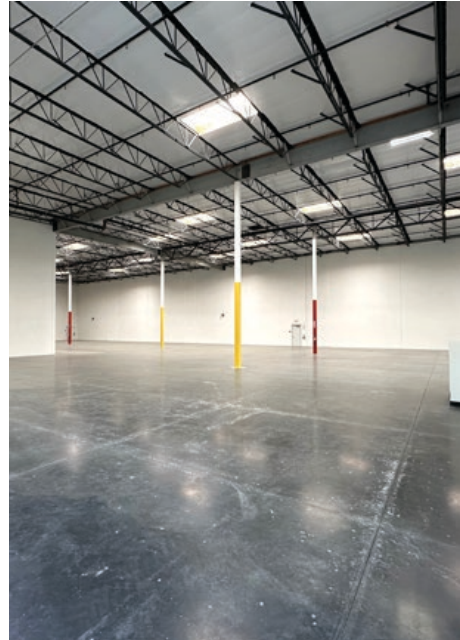
Although all information is furnished regarding for sale, rental or financing is from sources deemed reliable, such information has not been verified and no express representation is made nor is any to be implied as to the accuracy thereof, and it is submitted subject to errors, omissions, changes of price, rental or other conditions, prior sale, lease or financing, or withdrawal without notice. All Maps provided courtesy of Google Maps, Bing Maps, and Google Earth. D/AQ Corp. # 01129558

AVAILABLE FOR SALE

MS MOUNTAIN VIEW BUSINESS PARK

BLDG.
THIRTEEN

4 2 6 7 2 A V E N I D A A L V A R A D O | T E M E C U L A | C A



FOR MORE INFORMATION, CONTACT:

NOAH SAMARIN

P: 909.912.0007 | M: 714.812.1289
noah.samarin@daumcommercial.com
CADRE #01755814

NICK CANTU

P: 909.652.9054 | M: 714.787.9454
ncantu@daumcommercial.com
CADRE #02016719



Although all information is furnished regarding for sale, rental or financing is from sources deemed reliable, such information has not been verified and no express representation is made nor is any to be implied as to the accuracy thereof, and it is submitted subject to errors, omissions, changes of price, rental or other conditions, prior sale, lease or financing, or withdrawal without notice. All Maps provided courtesy of Google Maps, Bing Maps, and Google Earth. D/AQ Corp. # 01129558

AVAILABLE FOR SALE

MS MOUNTAIN VIEW

BUSINESS PARK

BLDG. THIRTEEN

13

AMENITIES MAP

42672 AVENIDA ALVARADO | TEMECULA | CA



**SUBJECT
PROPERTY**

FOR MORE INFORMATION, CONTACT:

NOAH SAMARIN

P: 909.912.0007 | M: 714.812.1289
noah.samarin@daumcommercial.com
CADRE #01755814

NICK CANTU

P: 909.652.9054 | M: 714.787.9454
ncantu@daumcommercial.com
CADRE #02016719



Although all information is furnished regarding for sale, rental or financing is from sources deemed reliable, such information has not been verified and no express representation is made nor is any to be implied as to the accuracy thereof, and it is submitted subject to errors, omissions, changes of price, rental or other conditions, prior sale, lease or financing, or withdrawal without notice. All Maps provided courtesy of Google Maps, Bing Maps, and Google Earth. D/AQ Corp. # 01129558