

LOW COVERAGE BUILDING TO LAND RATIO

FOR SALE/LEASE
4TH QTR. 2025 EXPECTED DELIVERY

WILDOMAR COMMERCE CENTER BLDGS. #3-5
36363, 36375 & 36387 & Elizabeth Lane | Wildomar | CA

261,000 Square Feet Available on 19.13 Acres



For more information on this opportunity, please contact:

KEN ANDERSEN | CCIM, SIOR
EXECUTIVE VICE PRESIDENT
P: 909.980.1234 | F: 909.980.3775
KEN.ANDERSEN@DAUMCOMMERCIAL.COM
CADRE #00902084

DAN FOYE
EXECUTIVE VICE PRESIDENT
P: 909.980.1234 | F: 909.980.3775
DAN.FOYE@DAUMCOMMERCIAL.COM
CADRE #01292002

GABE DUPLANTIER
ASSOCIATE
P: 909.912.0008
GDUPLANTIER@DAUMCOMMERCIAL.COM
CADRE #02178517

GORDON MIZE
SENIOR VICE PRESIDENT
P: 951.445.4504
GMIZE@LEETEMECULA.COM
CADRE #01275376

CHARLEY BLACK
SENIOR VICE PRESIDENT
P: 951.445.4507
CBLACK@LEETEMECULA.COM
CADRE #0100597

Although all information is furnished regarding sale, rental or financing is from sources deemed reliable, such information has not been verified and no express representation is made nor is any to be implied as to the accuracy thereof, and it is submitted subject to errors, omissions, changes of price, rental or other conditions, prior sale, lease or financing, or withdrawal without notice. D/AQ Corp. # 01129558



LOW COVERAGE BUILDING TO LAND RATIO

FOR SALE/LEASE
4TH QTR. 2025 EXPECTED DELIVERY

WILDOMAR COMMERCE CENTER BLDGS. #3-5
36363, 36375 & 36387 & Elizabeth Lane | Wildomar | CA

261,000 Square Feet Available on 19.13 Acres

BUILDING HIGHLIGHTS

The Wildomar Commerce Center (“WCC”) is a 23 acre master planned business park located at the corner of Clinton Keith Road and Elizabeth Lane in the City of Wildomar. The park will be developed in two (2) phases with the Phase I buildings (64,008 S.F., 95,702 S.F. and 99,940 S.F.) expected to start construction in first quarter 2025. The Phase I buildings total approximately 259,260 square feet on 22.84 net acres. This intentionally low coverage factor of 32% reduces traffic impacts when compared to a typical coverage factor of approximately 40% (333,000 S.F.) for similar projects.

Each building sits on its own legal parcel and each building is divisible. The on-site storm drain system for these three buildings will be designed as underground chambers in suitable locations adjacent to the buildings.



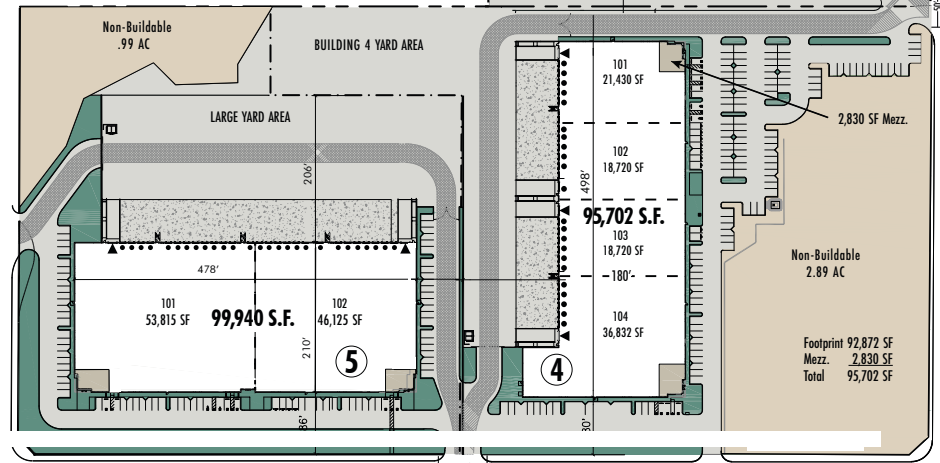
WILDOMAR COMMERCE CENTER



- LEGEND**
- Dock door
 - ▼ Ramp door
 - - - Potential deminishing wall

Developed by:
SUMMIT DEVELOPMENT CORPORATION
 and
Management Corp.

YAMAS DRIVE



BUNNY TRAIL

BUNNY TRAIL

← Highway 15 1 Mile

CLINTON KEITH ROAD

Future Signal

64,008 S.F.

ELIZABETH LANE



LOW COVERAGE BUILDING TO LAND RATIO

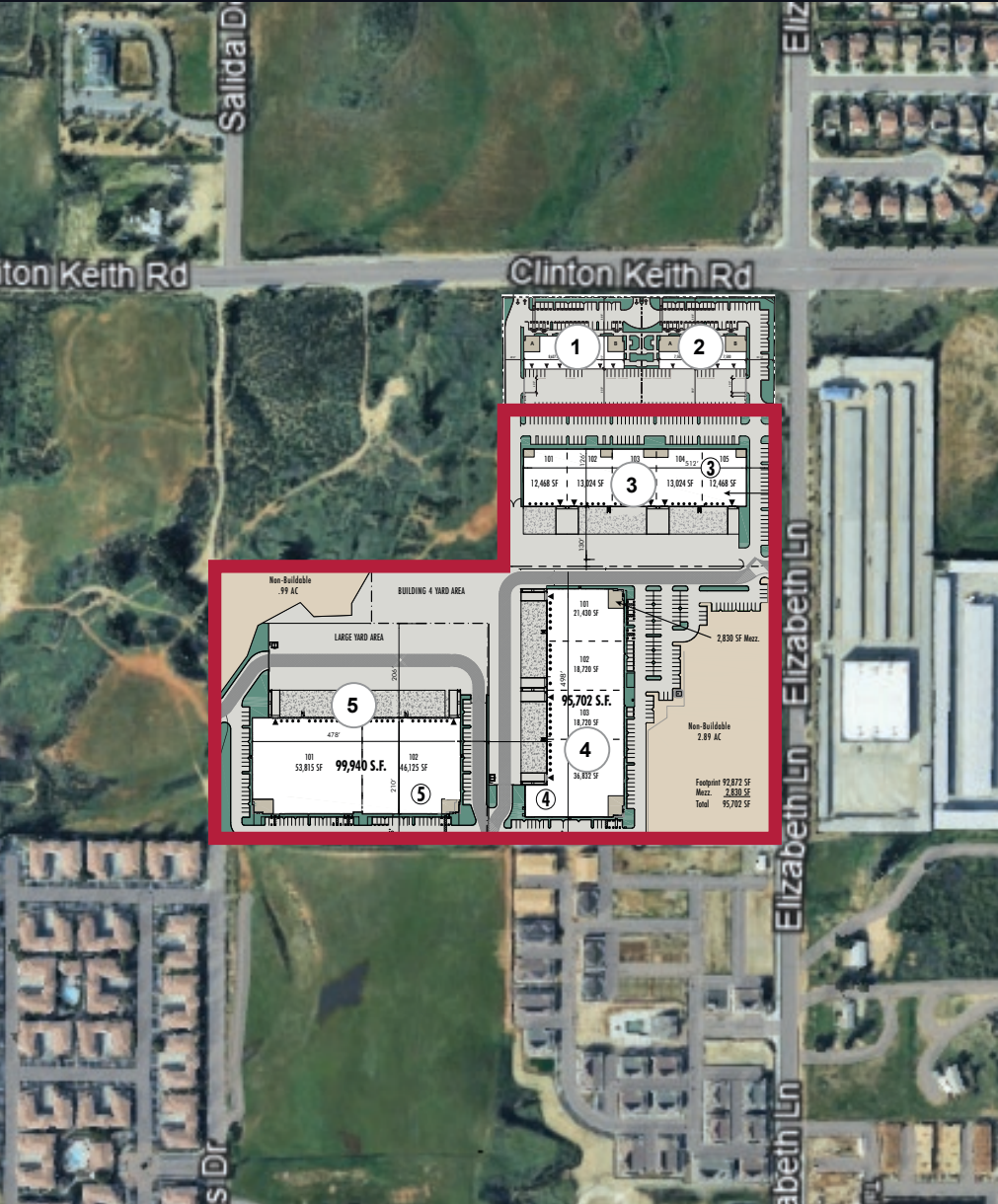
FOR SALE/LEASE

4TH QTR. 2025 EXPECTED DELIVERY

WILDOMAR COMMERCE CENTER BLDGS. #3-5

36363, 36375 & 36387 & Elizabeth Lane | Wildomar | CA

261,000 Square Feet Available on 19.13 Acres



BUILDING 3

- 64,008 Square Feet on 4.70 Acres
- 5,000 SF Office
- Large Secured Truck Court / Yard
- 32' Clearance
- ESFR Sprinklers with K-25 heads
- Divisible to 12,468 SF and 13,024 SF
- 25 Dock High Doors/ 5 Ground Level Doors
- 2,000AMP 277/480V Service Expandable to 4,000AMPS 277/480V
- Excellent Access to I-15 & 215 Freeways
- Less than 1 mile from the Clinton Keith On/Off Ramp on the I-15 Freeway
- 103 Parking Spaces

BUILDING 4

- 95,702 Square Feet on 7.28 Acres
- 5,000 SF Office
- Large Secured Truck Court / Yard
- 32' Clearance
- ESFR Sprinklers with K-25 heads
- Divisible to 18,720 SF, 22,800 SF and 36,832 SF
- 22 Dock High Doors/ 4 Ground Level Doors
- 2,000AMP 277/480V Service Expandable to 4,000AMPS 277/480V
- Excellent Access to I-15 & 215 Freeways
- Less than 1 mile from the Clinton Keith On/Off Ramp on the I-15 Freeway
- 146 Parking Spaces

BUILDING 5

- 99,940 Square Feet on 7.15 Acres
- 5,000 SF Office
- Large Secured Truck Court / Yard
- 32' Clearance
- ESFR Sprinklers with K-25 heads
- Divisible to 46,125 SF and 53,815 SF
- 26 Dock High Doors / 2 Ground Level Doors
- 2,000AMP 277/480V Service Expandable to 4,000AMPS 277/480V
- Excellent Access to I-15 & 215 Freeways
- Less than 1 mile from the Clinton Keith On/Off Ramp on the I-15 Freeway
- 81 Parking Spaces

LOW COVERAGE BUILDING TO LAND RATIO

FOR SALE/LEASE

4TH QTR. 2025 EXPECTED DELIVERY

WILDOMAR COMMERCE CENTER BLDGS. #3-5

36363, 36375 & 36387 & Elizabeth Lane | Wildomar | CA

261,000 Square Feet Available on 19.13 Acres

For more information on this opportunity, please contact:

KEN ANDERSEN | CCIM, SIOR

EXECUTIVE VICE PRESIDENT

P: 909.980.1234 | F: 909.980.3775

KEN.ANDERSEN@DAUMCOMMERCIAL.COM

CADRE #00902084

DAN FOYE

EXECUTIVE VICE PRESIDENT

P: 909.980.1234 | F: 909.980.3775

DAN.FOYE@DAUMCOMMERCIAL.COM

CADRE #01292002

GABE DUPLANTIER

ASSOCIATE

P: 909.912.0008

GDUPLANTIER@DAUMCOMMERCIAL.COM

CADRE #02178517

GORDON MIZE

SENIOR VICE PRESIDENT

P: 951.445.4504

GMIZE@LEETEMECULA.COM

CADRE #01275376

CHARLEY BLACK

SENIOR VICE PRESIDENT

P: 951.445.4507

CBLACK@LEETEMECULA.COM

CADRE #01000597

