

SHOVEL READY, FULLY APPROVED AND CERTIFIED PREGRADED PADS

**FOR SALE/LEASE**  
Q1 2026 EXPECTED DELIVERY

**WILDOMAR COMMERCE CENTER BLDGS. #1-5**  
SWC of Clinton Keith Rd and Elizabeth Lane | Wildomar | CA

FIVE NEW BUILDINGS FROM 15,003 SF TO 99,940 SF



For more information on this opportunity, please contact:

**KEN ANDERSEN | CCIM, SIOR**  
EXECUTIVE VICE PRESIDENT  
P: 909.980.1234 | F: 909.980.3775  
KEN.ANDERSEN@DAUMCOMMERCIAL.COM  
CADRE #00902084

**DAN FOYE**  
EXECUTIVE VICE PRESIDENT  
P: 909.980.1234 | F: 909.980.3775  
DAN.FOYE@DAUMCOMMERCIAL.COM  
CADRE #01292002

**GABE DUPLANTIER**  
ASSOCIATE  
P: 909.912.0008  
GDUPLANTIER@DAUMCOMMERCIAL.COM  
CADRE #02178517

**GORDON MIZE**  
SENIOR VICE PRESIDENT  
P: 951.445.4504  
GMIZE@LEETEMECULA.COM  
CADRE #01275376

**CHARLEY BLACK**  
SENIOR VICE PRESIDENT  
P: 951.445.4507  
CBLACK@LEETEMECULA.COM  
CADRE #0100597

Although all information is furnished regarding for sale, rental or financing is from sources deemed reliable, such information has not been verified and no express representation is made nor is any to be implied as to the accuracy thereof, and it is submitted subject to errors, omissions, changes of price, rental or other conditions, prior sale, lease or financing, or withdrawal without notice. D/AQ Corp. # 01129558



# SHOVEL READY, FULLY APPROVED AND CERTIFIED PREGRADED PADS

**FOR SALE/LEASE**  
Q1 2026 EXPECTED DELIVERY

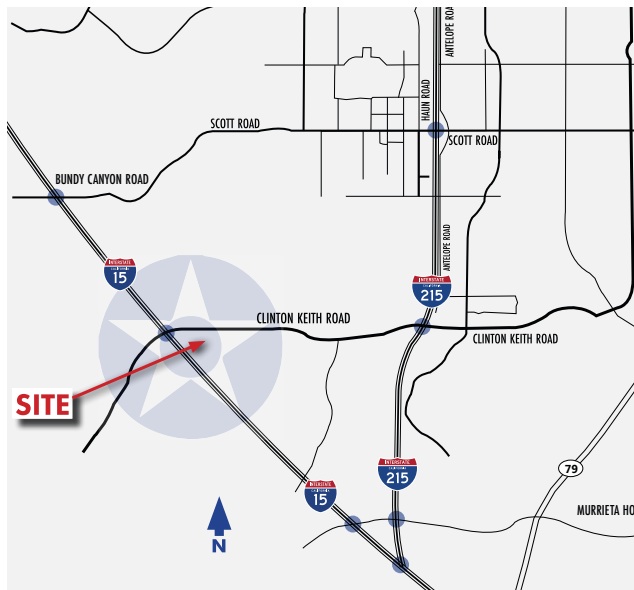
## WILDOMAR COMMERCE CENTER BLDGS. #1-5

SWC of Clinton Keith Rd and Elizabeth Lane | Wildomar | CA

**FIVE NEW BUILDINGS FROM 15,003 SF TO 99,940 SF**

### BUILDING HIGHLIGHTS

- For Lease
- For Sale
- Inquire about Pad Sales with Shovel Ready Plans
- Inquire about a Project Sale for a User Type Campus



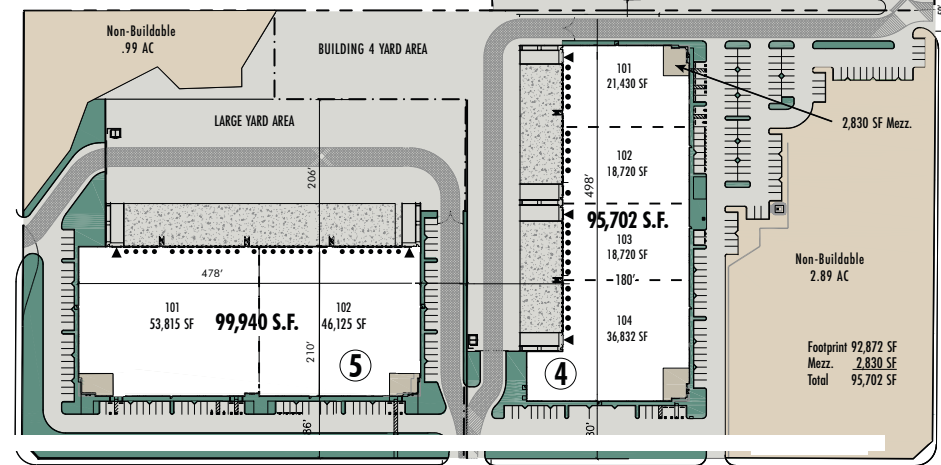
### WILDOMAR COMMERCE CENTER



- LEGEND**
- Dock door
  - ▼ Ramp door
  - - - Potential deminishing wall

Developed by:  
**SUMMIT DEVELOPMENT CORPORATION**  
and  
**Summit Management Corp.**

YAMAS DRIVE



BUNNY TRAIL

BUNNY TRAIL

ELIZABETH LANE

# SHOVEL READY, FULLY APPROVED AND CERTIFIED PREGRADED PADS

## FOR SALE/LEASE

Q1 2026 EXPECTED DELIVERY

## WILDOMAR COMMERCE CENTER BLDGS. #1-5

SWC of Clinton Keith Rd and Elizabeth Lane | Wildomar | CA

### FIVE NEW BUILDINGS FROM 15,003 SF TO 99,940 SF

BUILDING SPECIFICATIONS					
	Bldg 1	Bldg 2	Bldg 3	Bldg 4	Bldg 5
Addresses	24725 Clinton Keith Rd. Unit 101 and Unit 103	24750 Clinton Keith Rd. Unit 101 and Unit 103	36387 Elizabeth Lane	36375 Elizabeth Lane	36363 Elizabeth Lane
Site Area	1.90 AC	1.81 AC	4.70 AC	7.28 AC	7.15 AC
Total Building Area (SF)	17,255	15,003	64,008	95,702	99,940
Clearance	24'	24'	32'	32'	32'
Sprinkler	.60 GPM/2,000	.60 GPM/2,000	ESFR Sprinklers with K-25 heads	ESFR Sprinklers with K-25 heads	ESFR Sprinklers with K-25 heads
Divisible SF	8,628 SF	7,500 SF	12,468 SF and 13,024 SF	18,720 SF, 22,800 SF and 36,832 SF	46,125 SF and 53,815 SF
Truck Court	94'	94'	130'	135'	206'
Dock High Doors	0	0	25	22	26
Ground Level Doors	4	4	5	4	2
Power	800AMP 277/480V Power Expandable	800AMP 277/480V Power Expandable	2,000AMP 277/480V Service Expandable 4,000AMP 277/480 V	2,000AMP 277/480V Service Expandable 4,000AMP 277/480 V	2,000AMP 277/480V Service Expandable 4,000AMP 277/480 V
Parking	88	97	103	146	81



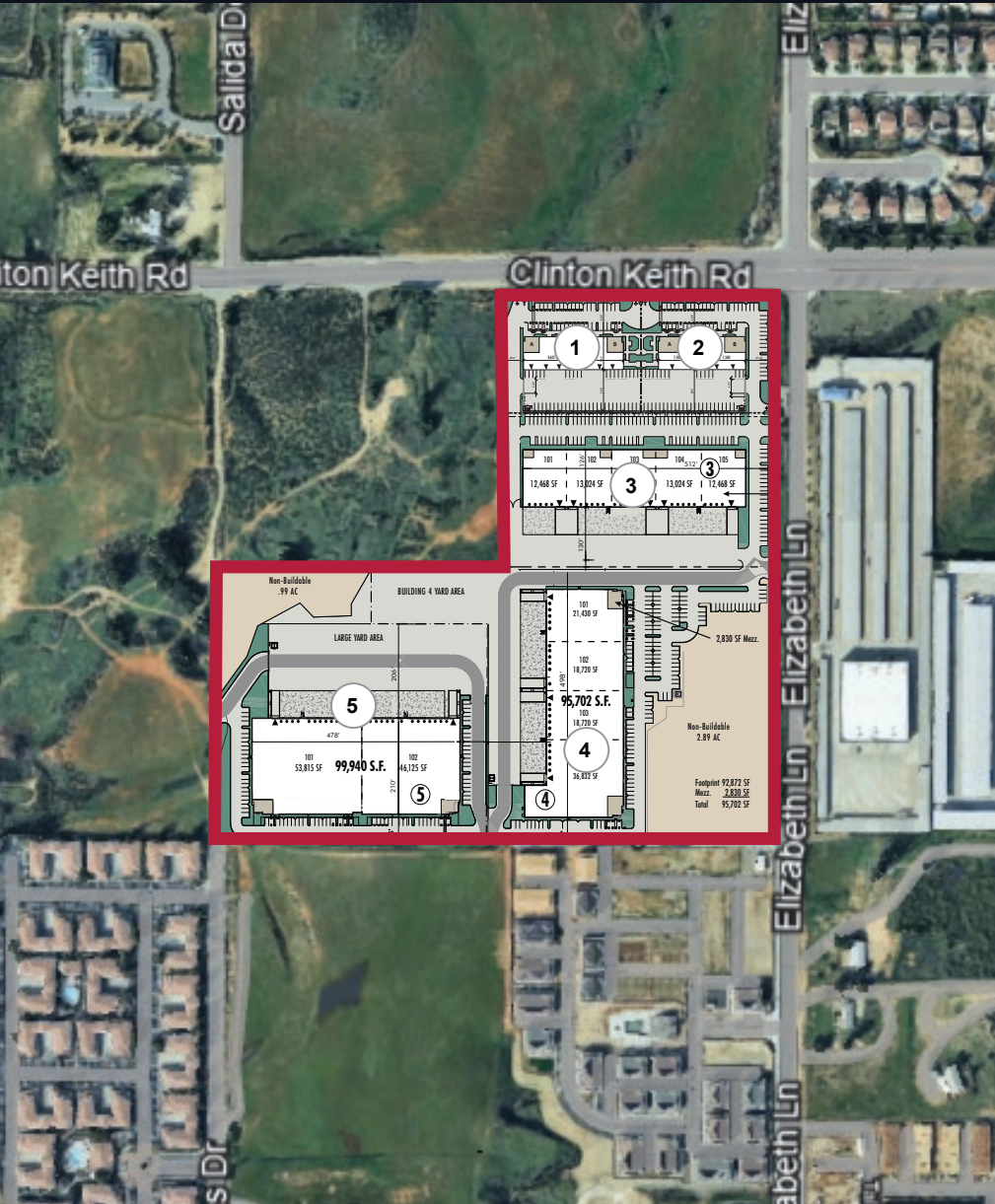
# SHOVEL READY, FULLY APPROVED AND CERTIFIED PREGRADED PADS

**FOR SALE/LEASE**  
**Q1 2026 EXPECTED DELIVERY**

## WILDOMAR COMMERCE CENTER BLDGS. #1-5

SWC of Clinton Keith Rd and Elizabeth Lane | Wildomar | CA

**FIVE NEW BUILDINGS FROM 15,003 SF TO 99,940 SF**



### BUILDING 1 & 2

- Building 1 : 17,255 SF  
Building 2 : 15,000 SF  
Large Secured Truck Court / Yard
- 24' Clearance
- .60 GPM/2,000 Sprinkler
- 8 Ground Level Doors
- 800AMP 277/480V Power Expandable
- Excellent Access to I-15 & 215 Freeways

- Less than 1 mile from the Clinton Keith On/Off Ramp on the I-15 Freeway
- 185 Parking Spaces
- Zoning allows: Retail, Medical, Office, Hotel and Industrial uses
- All or Part Buildings Available, Ideal for Users with Critical needs such as in Slab Designs, Specialty T.I.'s and Office Buildouts

### BUILDING 3

- 64,008 Square Feet on 4.70 Acres
- 5,000 SF Office
- Large Secured Truck Court / Yard
- 32' Clearance
- ESFR Sprinklers with K-25 heads
- Divisible to 12,468 SF and 13,024 SF
- 25 Dock High Doors/ 5 Ground Level Doors
- 2,000AMP 277/480V Service Expandable to 4,000AMPS 277/480V

- Excellent Access to I-15 & 215 Freeways
- Less than 1 mile from the Clinton Keith On/Off Ramp on the I-15 Freeway
- 103 Parking Spaces
- All or Part Buildings Available, Ideal for Users with Critical needs such as in Slab Designs, Specialty T.I.'s and Office Buildouts

### BUILDING 4

- 95,702 Square Feet on 7.28 Acres
- 5,000 SF Office
- Large Secured Truck Court / Yard
- 32' Clearance
- ESFR Sprinklers with K-25 heads
- Divisible to 18,720 SF, 22,800 SF and 36,832 SF
- 22 Dock High Doors/ 4 Ground Level Doors
- 2,000AMP 277/480V Service Expandable to 4,000AMPS 277/480V

- Excellent Access to I-15 & 215 Freeways
- Less than 1 mile from the Clinton Keith On/Off Ramp on the I-15 Freeway
- 146 Parking Spaces
- All or Part Buildings Available, Ideal for Users with Critical needs such as in Slab Designs, Specialty T.I.'s and Office Buildouts

### BUILDING 5

- 99,940 Square Feet on 7.15 Acres
- 5,000 SF Office
- Large Secured Truck Court / Yard
- 32' Clearance
- ESFR Sprinklers with K-25 heads
- Divisible to 46,125 SF and 53,815 SF
- 26 Dock High Doors / 2 Ground Level Doors
- 2,000AMP 277/480V Service Expandable to 4,000AMPS 277/480V

- Excellent Access to I-15 & 215 Freeways
- Less than 1 mile from the Clinton Keith On/Off Ramp on the I-15 Freeway
- 81 Parking Spaces
- All or Part Buildings Available, Ideal for Users with Critical needs such as in Slab Designs, Specialty T.I.'s and Office Buildouts



SHOVEL READY, FULLY APPROVED AND CERTIFIED PREGRADED PADS

## FOR SALE/LEASE

Q1 2026 EXPECTED DELIVERY

## WILDOMAR COMMERCE CENTER BLDGS. #1-5

SWC of Clinton Keith Rd and Elizabeth Lane | Wildomar | CA

FIVE NEW BUILDINGS FROM 15,003 SF TO 99,940 SF

For more information on this opportunity, please contact:

**KEN ANDERSEN | CCIM, SIOR**

EXECUTIVE VICE PRESIDENT

P: 909.980.1234 | F: 909.980.3775

KEN.ANDERSEN@DAUMCOMMERCIAL.COM

CADRE #00902084

**DAN FOYE**

EXECUTIVE VICE PRESIDENT

P: 909.980.1234 | F: 909.980.3775

DAN.FOYE@DAUMCOMMERCIAL.COM

CADRE #01292002

**GABE DUPLANTIER**

ASSOCIATE

P: 909.912.0008

GDUPLANTIER@DAUMCOMMERCIAL.COM

CADRE #02178517

**GORDON MIZE**

SENIOR VICE PRESIDENT

P: 951.445.4504

GMIZE@LEETEMECULA.COM

CADRE #01275376

**CHARLEY BLACK**

SENIOR VICE PRESIDENT

P: 951.445.4507

CBLACK@LEETEMECULA.COM

CADRE #01000597

