

SHOVEL READY, FULLY APPROVED AND CERTIFIED PREGRADED PADS

FOR SALE/LEASE
Q1 2026 EXPECTED DELIVERY

WILDOMAR COMMERCE CENTER BLDGS. #4-5
36375 & 36387 & Elizabeth Lane | Wildomar | CA

195,642 Square Feet Available on 14.43 Acres



For more information on this opportunity, please contact:

KEN ANDERSEN | CCIM, SIOR
EXECUTIVE VICE PRESIDENT
P: 909.980.1234 | F: 909.980.3775
KEN.ANDERSEN@DAUMCOMMERCIAL.COM
CADRE #00902084

DAN FOYE
EXECUTIVE VICE PRESIDENT
P: 909.980.1234 | F: 909.980.3775
DAN.FOYE@DAUMCOMMERCIAL.COM
CADRE #01292002

GABE DUPLANTIER
ASSOCIATE
P: 909.912.0008
GDUPLANTIER@DAUMCOMMERCIAL.COM
CADRE #02178517

GORDON MIZE
SENIOR VICE PRESIDENT
P: 951.445.4504
GMIZE@LEETEMECULA.COM
CADRE #01275376

CHARLEY BLACK
SENIOR VICE PRESIDENT
P: 951.445.4507
CBLACK@LEETEMECULA.COM
CADRE #0100597

Although all information is furnished regarding for sale, rental or financing is from sources deemed reliable, such information has not been verified and no express representation is made nor is any to be implied as to the accuracy thereof, and it is submitted subject to errors, omissions, changes of price, rental or other conditions, prior sale, lease or financing, or withdrawal without notice. D/AQ Corp. # 01129558



SHOVEL READY, FULLY APPROVED AND CERTIFIED PREGRADED PADS

FOR SALE/LEASE
Q1 2026 EXPECTED DELIVERY

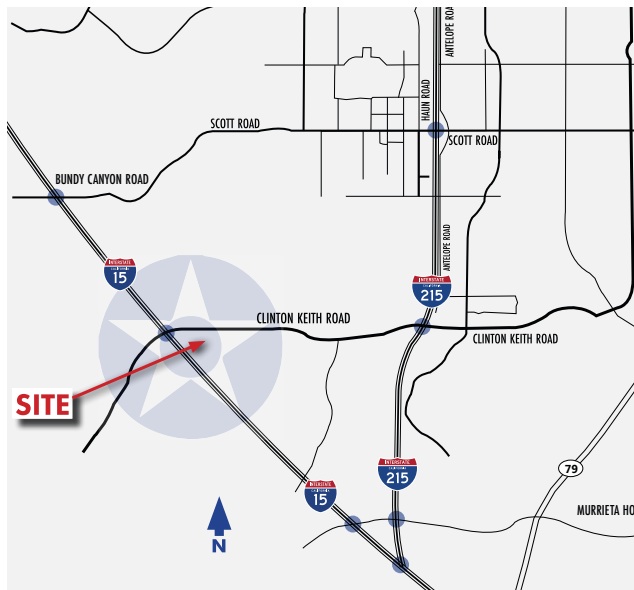
WILDOMAR COMMERCE CENTER BLDGS. #4-5

36375 & 36387 & Elizabeth Lane | Wildomar | CA

195,642 Square Feet Available on 14.43 Acres

BUILDING HIGHLIGHTS

- For Lease
- For Sale
- Inquire about Pad Sales with Shovel Ready Plans
- Inquire about a Project Sale for a User Type Campus



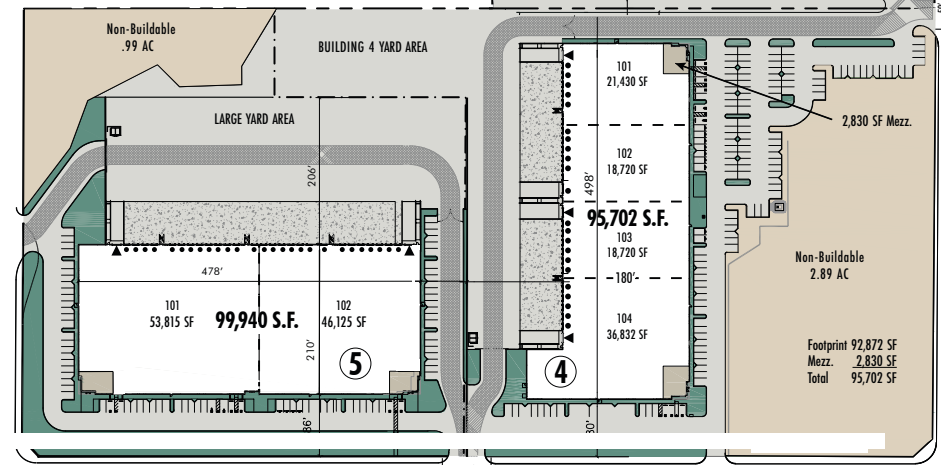
WILDOMAR COMMERCE CENTER



- LEGEND**
- Dock door
 - ▼ Ramp door
 - - - Potential deminishing wall

Developed by:
SUMMIT DEVELOPMENT CORPORATION
and
Summit Management Corp.

YAMAS DRIVE



BUNNY TRAIL

BUNNY TRAIL

15 1 Mile

CLINTON KEITH ROAD

Future Signal

64,008 S.F.

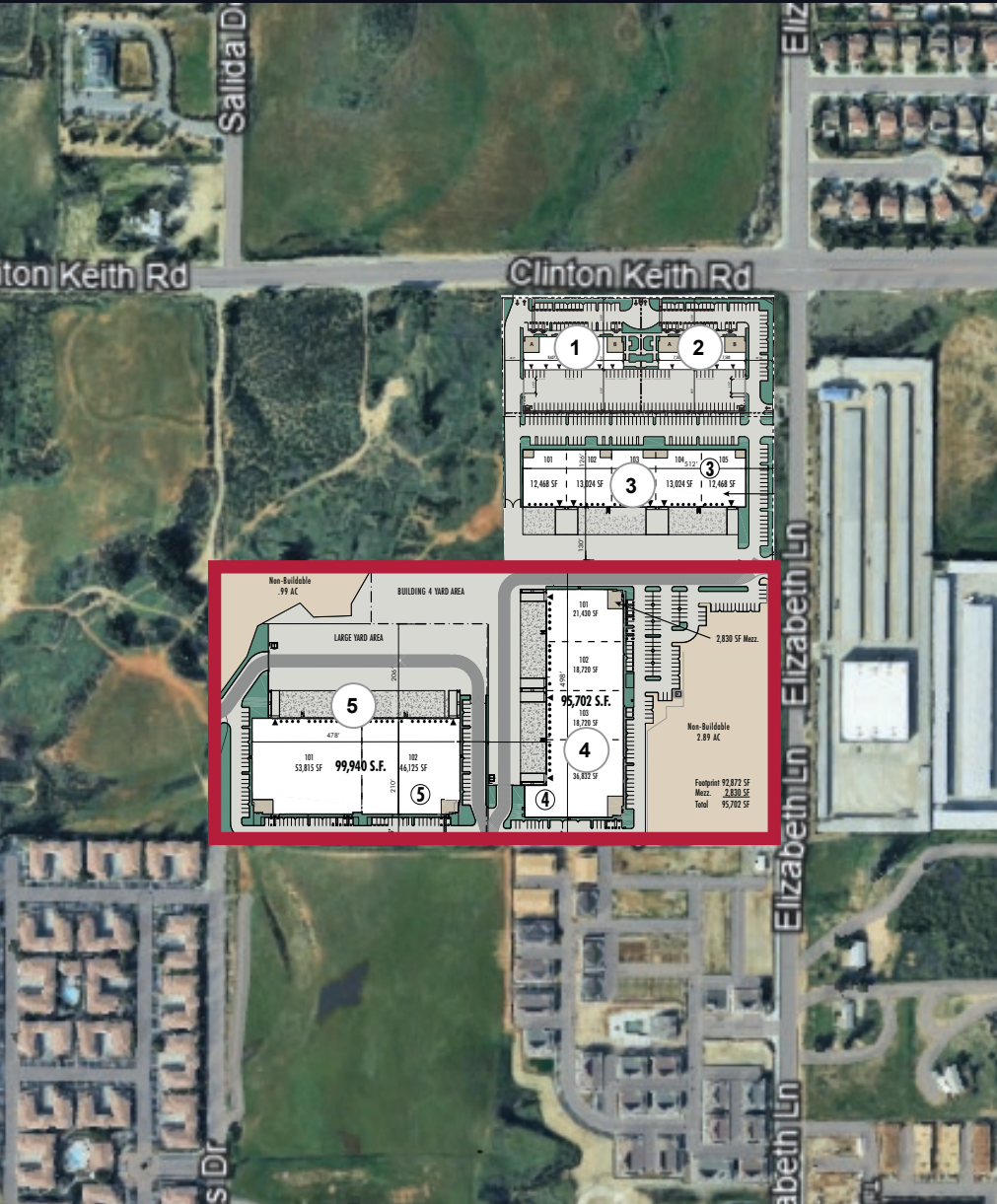
ELIZABETH LANE



FOR SALE/LEASE
Q1 2026 EXPECTED DELIVERY

36375 & 36387 & Elizabeth Lane | Wildomar | CA

195,642 Square Feet Available on 14.43 Acres

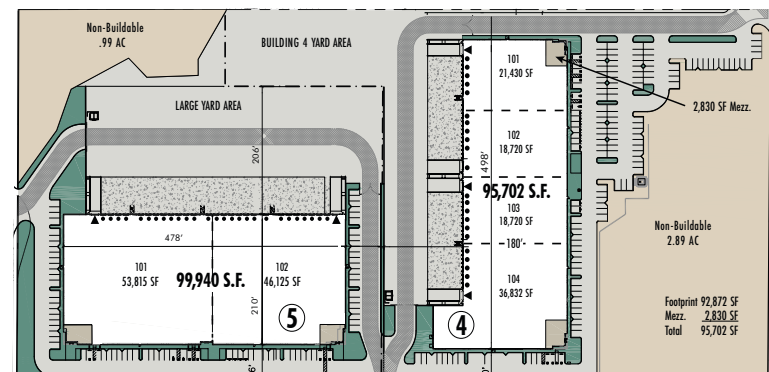


- 95,702 Square Feet on 7.28 Acres
- 5,000 SF Office
- Large Secured Truck Court / Yard
- 32' Clearance
- ESFR Sprinklers with K-25 heads
- Divisible to 18,720 SF, 22,800 SF and 36,832 SF
- 22 Dock High Doors/ 4 Ground Level Doors
- 2,000AMP 277/480V Service Expandable to 4,000AMPS 277/480V

- Excellent Access to I-15 & 215 Freeways
- Less than 1 mile from the Clinton Keith On/Off Ramp on the I-15 Freeway
- 146 Parking Spaces
- All or Part Buildings Available, Ideal for Users with Critical needs such as in Slab Designs, Specialty T.I.'s and Office Buildouts

- 99,940 Square Feet on 7.15 Acres
- 5,000 SF Office
- Large Secured Truck Court / Yard
- 32' Clearance
- ESFR Sprinklers with K-25 heads
- Divisible to 46,125 SF and 53,815 SF
- 26 Dock High Doors / 2 Ground Level Doors
- 2,000AMP 277/480V Service Expandable to 4,000AMPS 277/480V

- Excellent Access to I-15 & 215 Freeways
- Less than 1 mile from the Clinton Keith On/Off Ramp on the I-15 Freeway
- 81 Parking Spaces
- All or Part Buildings Available, Ideal for Users with Critical needs such as in Slab Designs, Specialty T.I.'s and Office Buildouts



SHOVEL READY, FULLY APPROVED AND CERTIFIED PREGRADED PADS

FOR SALE/LEASE

Q1 2026 EXPECTED DELIVERY

WILDOMAR COMMERCE CENTER BLDGS. #4-5

36375 & 36387 & Elizabeth Lane | Wildomar | CA

195,642 Square Feet Available on 14.43 Acres

For more information on this opportunity, please contact:

KEN ANDERSEN | CCIM, SIOR

EXECUTIVE VICE PRESIDENT

P: 909.980.1234 | F: 909.980.3775

KEN.ANDERSEN@DAUMCOMMERCIAL.COM

CADRE #00902084

DAN FOYE

EXECUTIVE VICE PRESIDENT

P: 909.980.1234 | F: 909.980.3775

DAN.FOYE@DAUMCOMMERCIAL.COM

CADRE #01292002

GABE DUPLANTIER

ASSOCIATE

P: 909.912.0008

GDUPLANTIER@DAUMCOMMERCIAL.COM

CADRE #02178517

GORDON MIZE

SENIOR VICE PRESIDENT

P: 951.445.4504

GMIZE@LEETEMECULA.COM

CADRE #01275376

CHARLEY BLACK

SENIOR VICE PRESIDENT

P: 951.445.4507

CBLACK@LEETEMECULA.COM

CADRE #01000597

