

PRICE REDUCTION
NOW AVAILABLE FOR LEASE - \$1.30/SF GROSS



3,906 SF INDUSTRIAL/OFFICE FOR SALE OR LEASE

522 E 6TH STREET
LOS ANGELES | CA 90021

FOR MORE INFORMATION, PLEASE CONTACT:

BRYAN ABAYAN
Associate Vice President
P: 310.883.8476
babayan@daumcre.com
CA License # 02005294

PAUL GINGRICH
Executive Vice President
P: 714.941.5333
pgingrich@daumcre.com
CA License # 01299770

PROPERTY HIGHLIGHTS



**IDEAL FOR AID
ORGANIZATIONS
CHARITABLE
FOUNDATIONS**



**3,906 SF
OFFICE SPACE**



**M2
ZONING**

D/AQ Corp. #01129558. Maps Courtesy ©Google & ©Microsoft. Although all information is furnished regarding for sale, rental or financing is from sources deemed reliable, such information has not been verified and no express representation is made nor is any to be implied as to the accuracy thereof, and it is submitted subject to errors, omissions, changes of price, rental or other conditions, prior sale, lease or financing, or withdrawal without notice.

DAUM
COMMERCIAL REAL ESTATE SERVICES

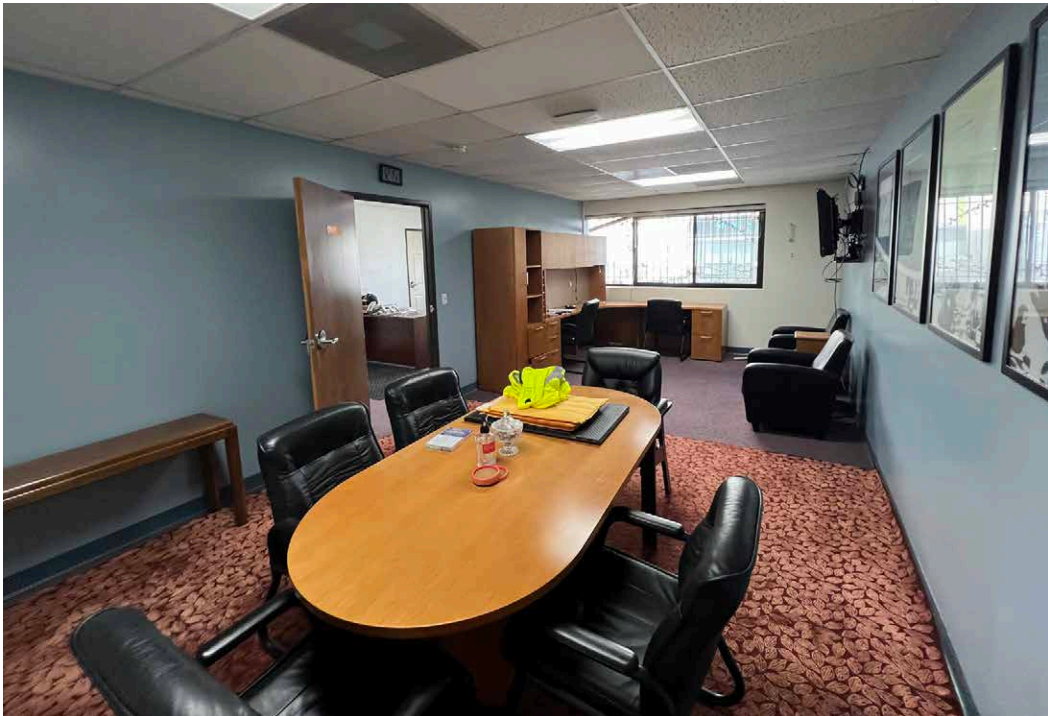
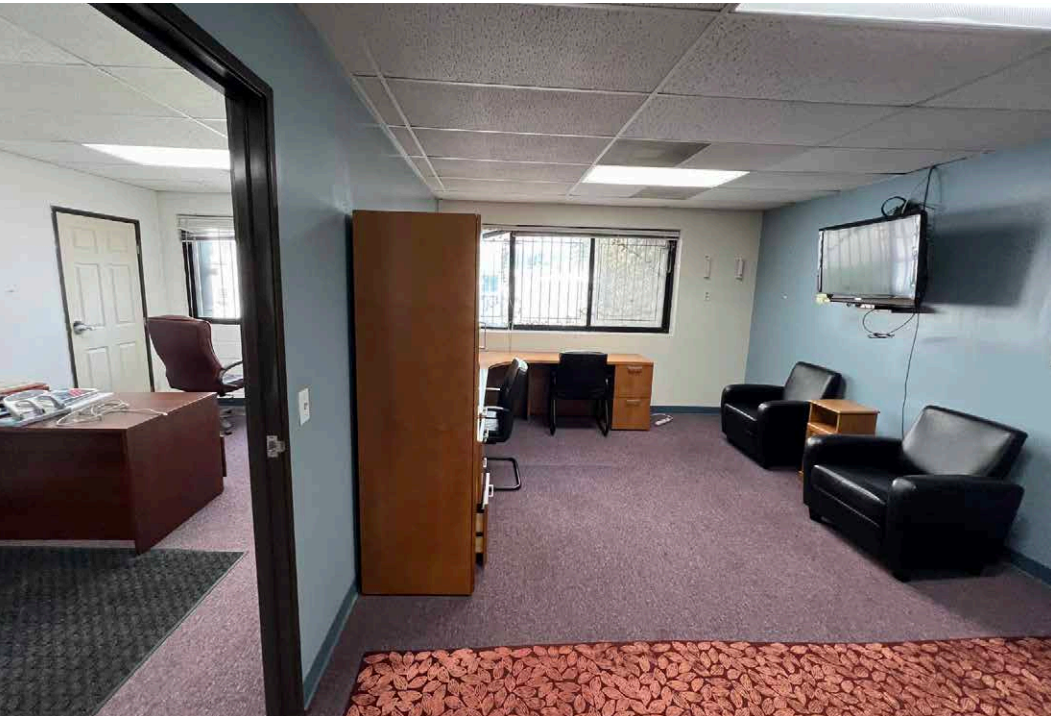


PROPERTY HIGHLIGHTS

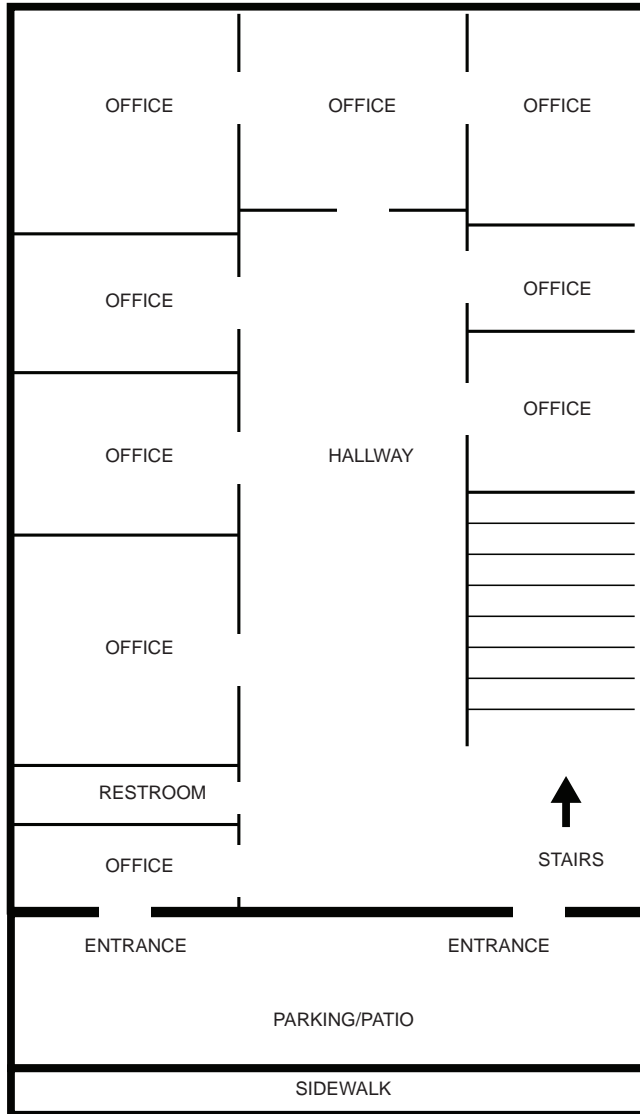
- Sale Price: \$1,484,280.00
- Sale Price/SF: \$380.00
- Lease Rate/SF: \$1.30 Per SF Gross
- Monthly Rent: \$5,078 Gross
- Available SF: 3,906 SF
- Property Lot Size: 0.06 Ac / 2,744 SF
- Construction Type: Concrete
- Office SF / #: 3,906 SF / 14
- Restrooms: 2
- Office HVAC: Heat & AC
- Possession: Vacant
- APN#: 5147026017
- Parking Spaces: 4
- Electrical: 200 Amps, 240 Volts, 3 Phase
- Construction Status/Year Built: Existing / 1992
- In the Heart of Skid Row Central Downtown
- First Time on Market / Two-Story Building
- Ideal for Aid Organizations / Charitable Foundations
- Zoning: M2
- Growth Potential / Part of the Downtown LA 2040 Plan
- 14 Private Offices / Abundant Windows / Full HVAC / Kitchenette
- Close to Vibrant Areas / Near Arts District / Little Tokyo / Fashion District

Aerial and Property Photos

522 E 6TH STREET
LOS ANGELES | CA 90021

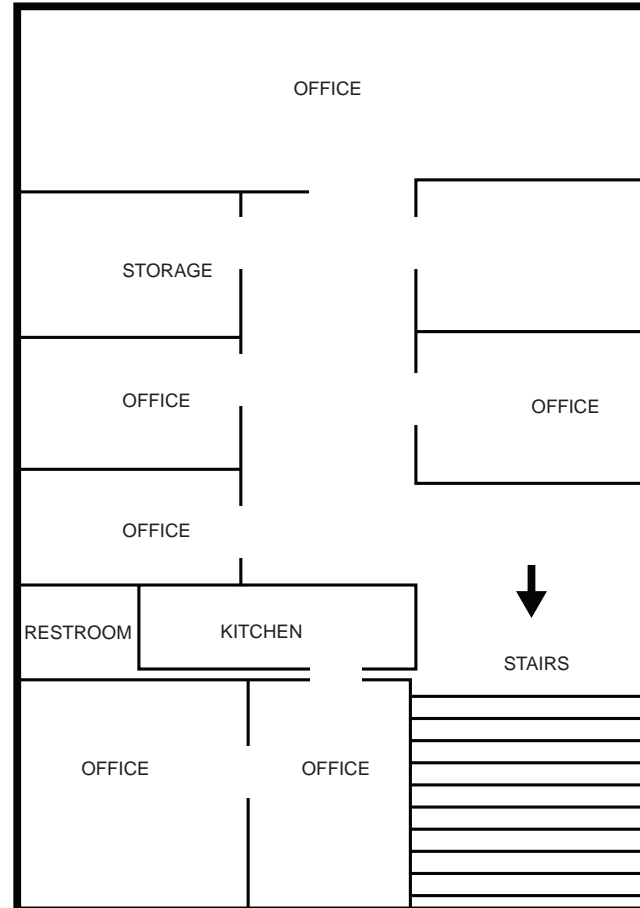


First Floor



E. 6th Street.

Second Floor



PLAN LAYOUT SUBJECT TO FIELD CONDITIONS AND MAY DIFFER FROM PLAN AS SHOWN. ALL INFORMATION PRESENTED ON THIS DRAWING IS PRESUMED TO BE ACCURATE, HOWEVER TENANT SHOULD VERIFY PERTINENT INFORMATION PRIOR TO COMMITTING TO A LEASE. ANY FURNITURE OR APPLIANCES SHOWN ON PLAN ARE FOR CONCEPT ONLY AND WILL BE TENANT PROVIDED.

Property Location

522 E 6TH STREET
LOS ANGELES | CA 90021



1,202,073
5-Mile Radius of
Population Served

26.7 Miles
to Port of LA/
Long Beach

26.3 Miles
to Long Beach
Airport (LGB)

18.7 Miles
to Los Angeles
Airport (LAX)

0.6 Miles
to Nearest FedEx
DC

1.3 Miles
to Nearest UPS
DC

1.3 Miles
to Nearest DHL
DC

38.8 Miles
to John Wayne
Airport (SNA)

NEARBY DEVELOPMENTS



1. 609-623 E 5th St - The Alvidrez
2. 401 E 6th St - 6th Street Place
3. 222 E 7th St - Fashion District Residences
4. 401 E 7th St - Flor 401 Lofts
5. 519 E 7th St - SP7 Apartments

6. 531 San Julian St - Renato Apartments
7. 554 S San Pedro St - Weingart Center Towers
8. 755 Wall St - Flower Market
9. 600 S San Pedro St

Google



For More Information, Contact:

BRYAN ABAYAN
ASSOCIATE VICE PRESIDENT
P: 310.883.8476
babayan@daumcre.com
CA License # 02005294

PAUL GINGRICH
EXECUTIVE VICE PRESIDENT
P: 714.941.5333
pgingrich@daumcre.com
CA License # 01299770

D/AQ Corp. #01129558. Maps Courtesy ©Google & ©Microsoft. Although all information is furnished regarding for sale, rental or financing is from sources deemed reliable, such information has not been verified and no express representation is made nor is any to be implied as to the accuracy thereof, and it is submitted subject to errors, omissions, changes of price, rental or other conditions, prior sale, lease or financing, or withdrawal without notice.