

CYPRESS CORPORATE CENTER

5,242 SF OFFICE SPACE FOR SUBLEASE



6262 KATELLA AVENUE • CYPRESS, CALIFORNIA

PROJECT FEATURES

- 5,242 SF of Second Floor Offices
- Prestigious Corporate Neighbors
- 30 Unreserved Parking Spaces
- Available for Immediate Occupancy
- Sublease Term Thru July 31, 2029
- Great Retail Amenities Nearby
- Six (6) Private Offices
- Fully Refurbished Offices
- Close to 405, 22 & 605 Freeways

Exclusively Marketed By:

ANOTHER QUALITY PROJECT BY:

CYPRESS
LAND COMPANY

Samuel Chu
Executive Vice President
Direct **562.207.3303**
sam.chu@daumcommercial.com
CA DRE #01186837

Steven Keung
Associate
Direct **562.207.3313**
skeung@daumcommercial.com
CA DRE #02172287

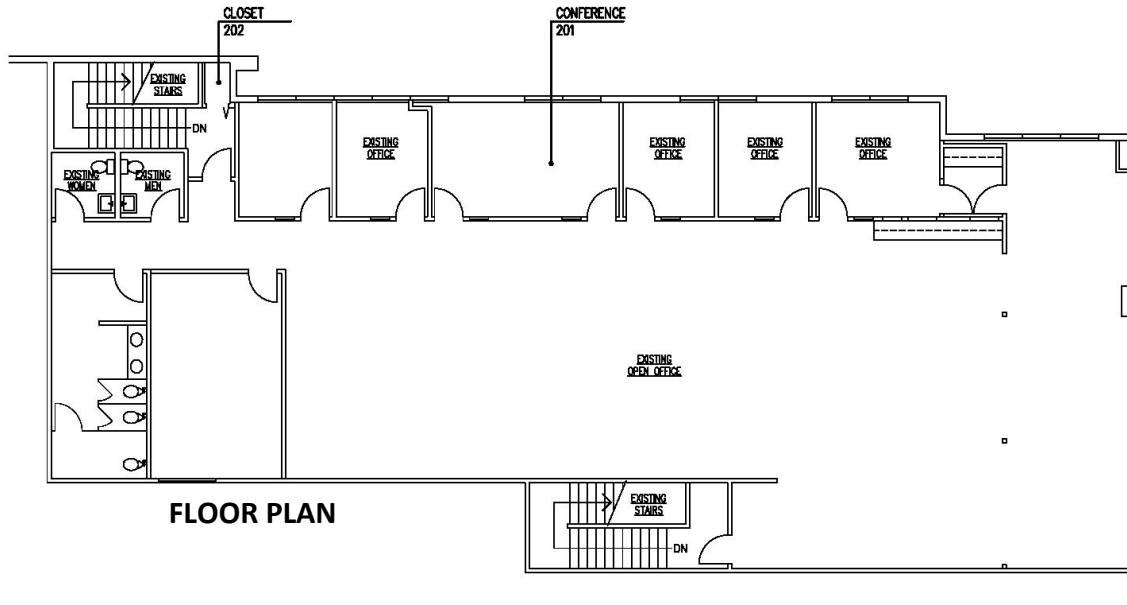
DAUM
COMMERCIAL REAL ESTATE SERVICES

www.daumcommercial.com

CYPRESS CORPORATE CENTER

6262 KATELLA AVENUE • CYPRESS, CALIFORNIA

5,242 SF OFFICE SPACE FOR SUBLEASE



Exclusively Marketed By:

ANOTHER QUALITY PROJECT BY:



Samuel Chu

Executive Vice President
Direct **562.207.3303**
sam.chu@daumcommercial.com
CA DRE #01186837

Steven Keung

Associate
Direct **562.207.3313**
skeung@daumcommercial.com
CA DRE #02172287



www.daumcommercial.com