



## ADVANCE NOTICE: GARDENA BUSINESS PARK

# 1964

## W. 139<sup>TH</sup> ST

GARDENA | CA 90249

# FOR LEASE ±52,000 SF

### PROPERTY FEATURES

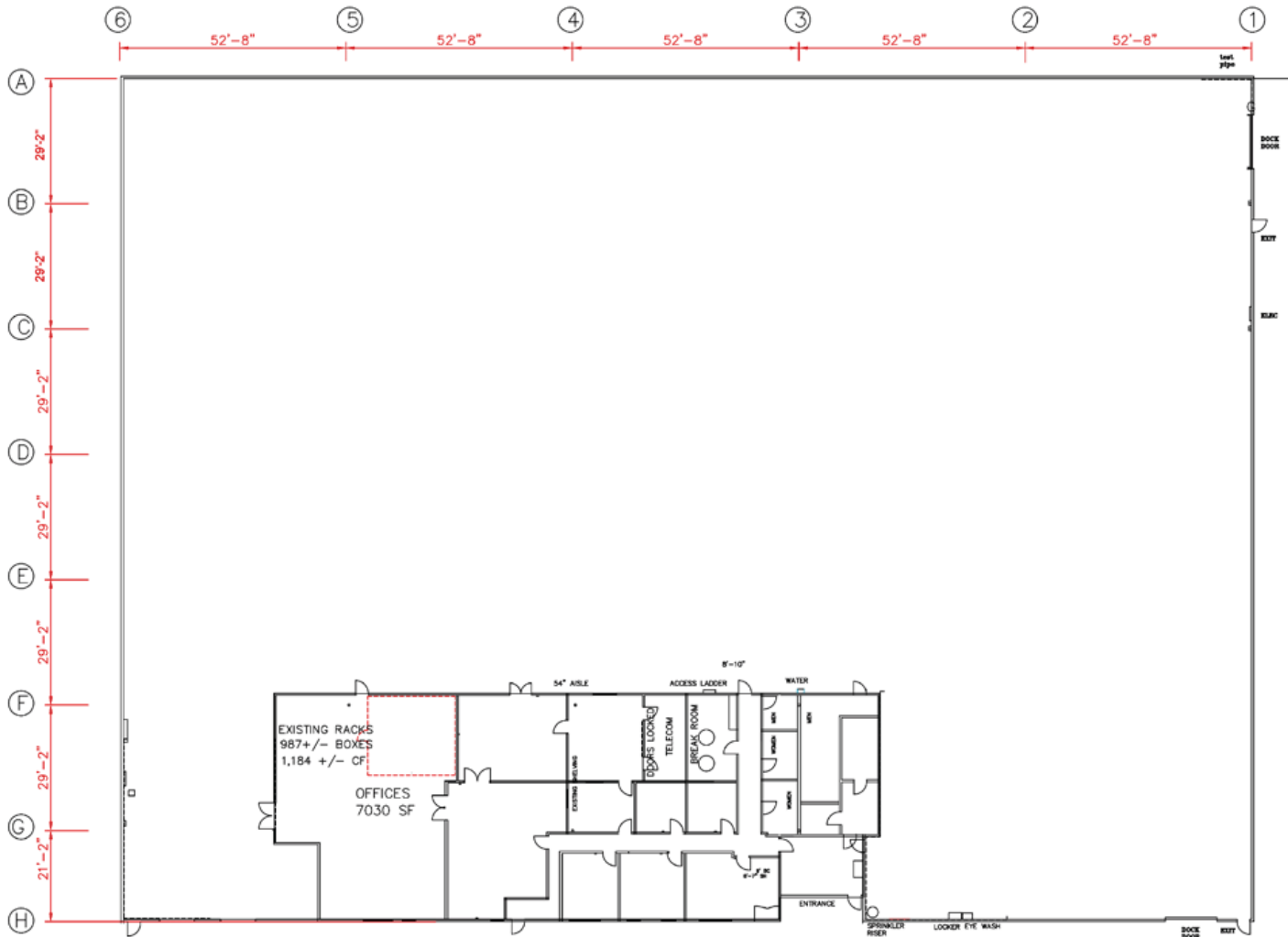
- Good Whse or Mfg Bldg
- Large Fenced Secure Yard
- 600 Amps, 277-480V, 3Ø
- 1 Ground Level Door
- 3 Dock High Doors
- 7,000 SF of Office
- Sprinklered
- 100 Parking Spaces
- Near 110 & 105 Freeway

FOR MORE INFORMATION, CONTACT:

**BRAD LEVIN**  
EXECUTIVE V.P. / PRINCIPAL  
P: 310.538.6728 | E: BLEVIN@DAUMCRE.COM  
CADRE #01020885

**JACK STONE**  
ASSOCIATE  
P: 818.449.1622 | M: 747.217.1832 | E: JSTONE@DAUMCOMMERCIAL.COM  
CA DRE #02070402

 **DAUM**  
COMMERCIAL REAL ESTATE SERVICES



\*NOT TO SCALE

**1964**  
**W. 139<sup>TH</sup> ST**  
 GARDENA | CA 90249

FOR MORE INFORMATION, CONTACT:

**BRAD LEVIN**  
 EXECUTIVE V.P. / PRINCIPAL  
 P: 310.538.6728  
 E: BLEVIN@DAUMCRE.COM  
 CADRE #01020885

**JACK STONE**  
 ASSOCIATE  
 P: 818.449.1622 | M: 747.217.1832  
 E: JSTONE@DAUMCOMMERCIAL.COM  
 CA DRE #02070402

**SITE PLAN**

**DAUM**  
 COMMERCIAL REAL ESTATE SERVICES



**1964**  
**W. 139<sup>TH</sup> ST**  
GARDENA | CA 90249

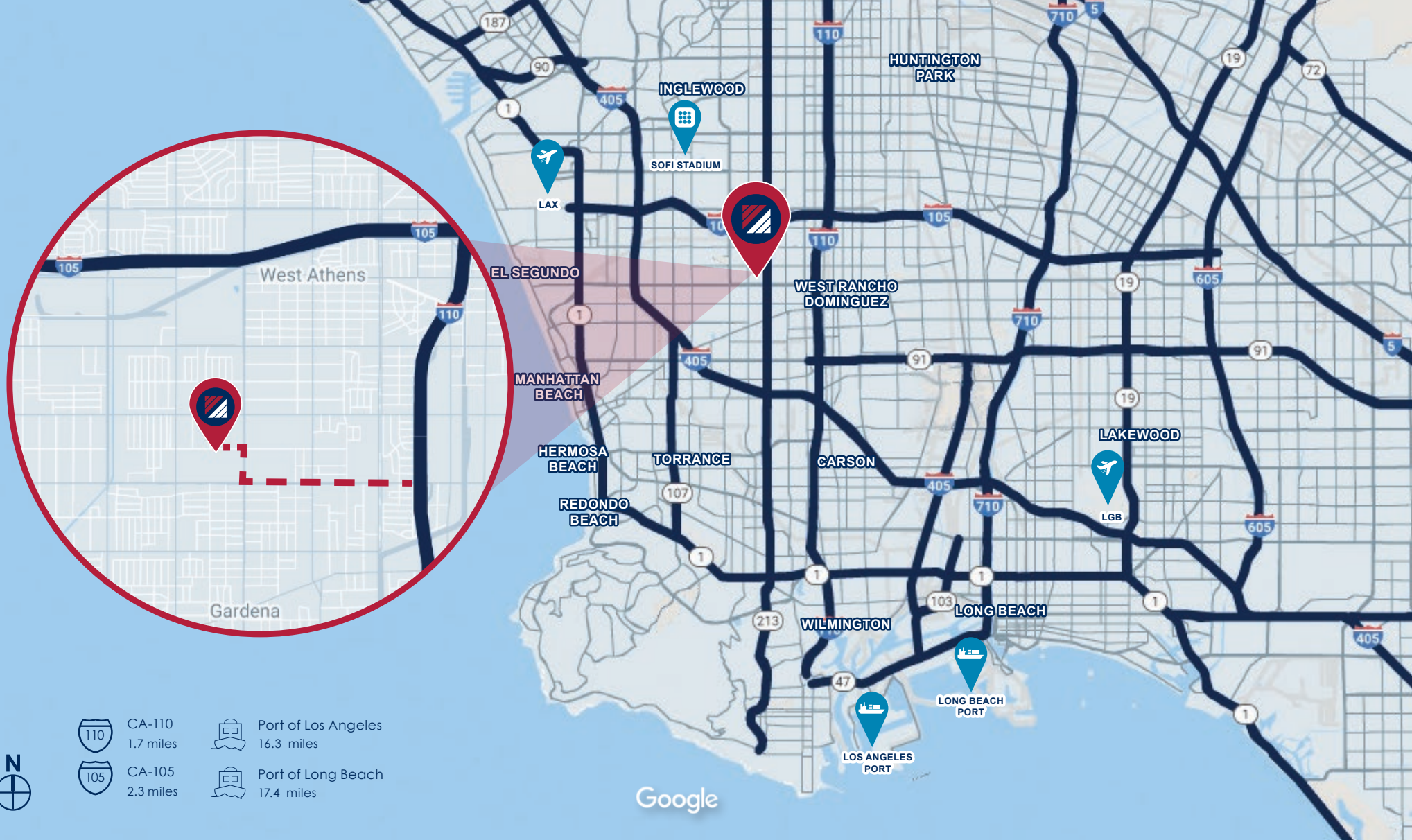
FOR MORE INFORMATION, CONTACT:

**BRAD LEVIN**  
EXECUTIVE V.P. / PRINCIPAL  
P: 310.538.6728  
E: BLEVIN@DAUMCRE.COM  
CADRE #01020885

**JACK STONE**  
ASSOCIATE  
P: 818.449.1622 | M: 747.217.1832  
E: JSTONE@DAUMCOMMERCIAL.COM  
CA DRE #02070402

**AERIALS**

  
COMMERCIAL REAL ESTATE SERVICES



**1964**  
**W. 139<sup>TH</sup> ST**  
 GARDENA | CA 90249

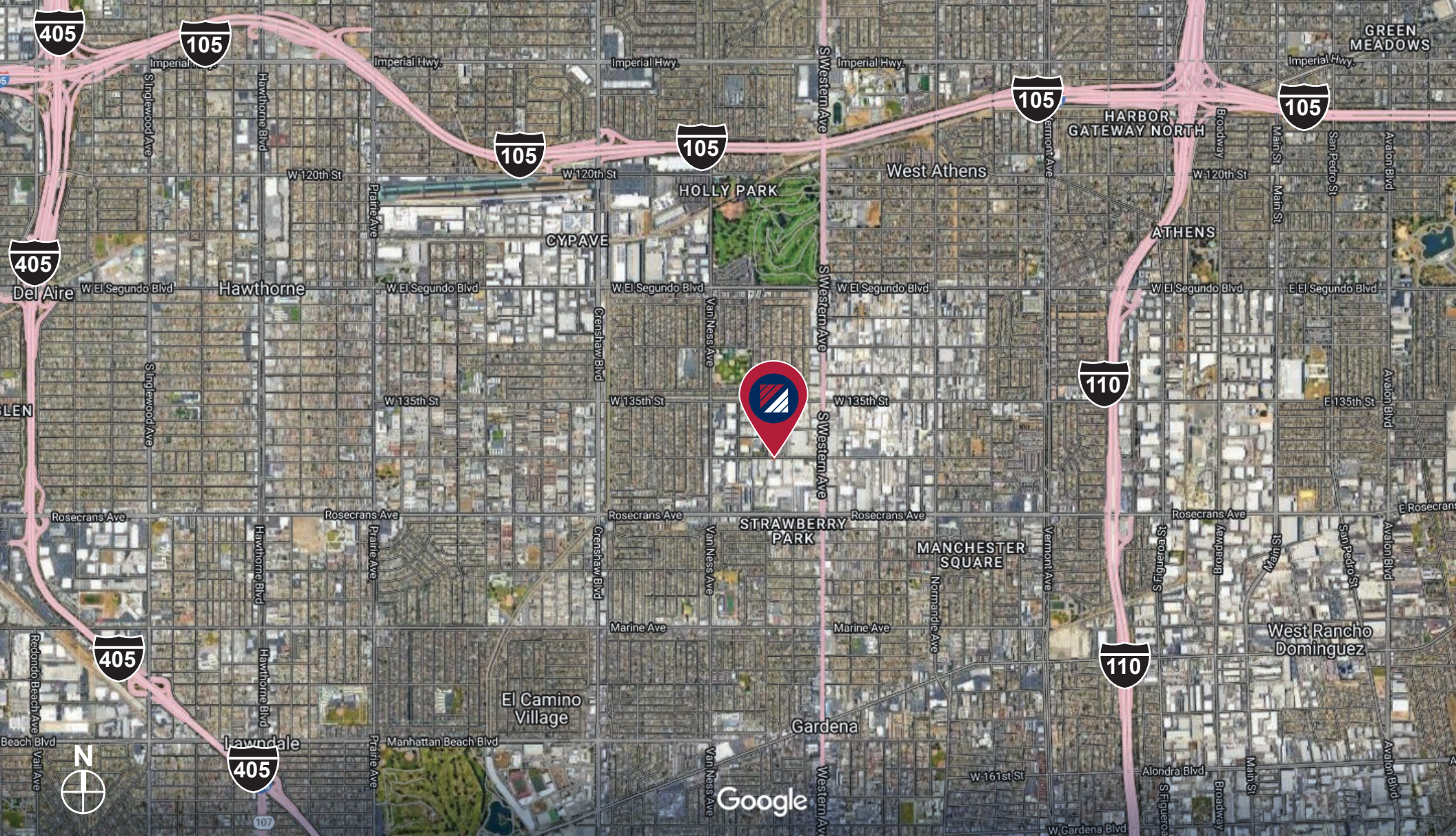
FOR MORE INFORMATION, CONTACT:

**BRAD LEVIN**  
 EXECUTIVE V.P. / PRINCIPAL  
 P: 310.538.6728  
 E: BLEVIN@DAUMCRE.COM  
 CADRE #01020885

**JACK STONE**  
 ASSOCIATE  
 P: 818.449.1622 | M: 747.217.1832  
 E: JSTONE@DAUMCOMMERCIAL.COM  
 CA DRE #02070402

LOCATION MAP





**1964**  
**W. 139<sup>TH</sup> ST**  
GARDENA | CA 90249

FOR MORE INFORMATION, CONTACT:

**BRAD LEVIN**  
EXECUTIVE V.P. / PRINCIPAL  
P: 310.538.6728  
E: BLEVIN@DAUMCRE.COM  
CADRE #01020885

**JACK STONE**  
ASSOCIATE  
P: 818.449.1622 | M: 747.217.1832  
E: JSTONE@DAUMCOMMERCIAL.COM  
CA DRE #02070402

**AERIAL MAP**

 **DAUM**  
COMMERCIAL REAL ESTATE SERVICES







**SUBJECT PROPERTY**

**STERLING**  
TRANSPORTATION

**LIGHT**  
SPACE  
STUDIOS

**USPS.COM**

**M&K**  
METAL CO.

ROSECRANS AVE.

**SAF KEEP STORAGE**

**NISSIN**  
GROUP

**StorQuest**  
SELF STORAGE

**Starbucks**

ROSECRANS AVE.

Google



**1964**

**W. 139<sup>TH</sup> ST**

GARDENA | CA 90249

FOR MORE INFORMATION, CONTACT:

**BRAD LEVIN**  
 EXECUTIVE V.P. / PRINCIPAL  
 P: 310.538.6728  
 E: BLEVIN@DAUMCRE.COM  
 CADRE #01020885

**JACK STONE**  
 ASSOCIATE  
 P: 818.449.1622 | M: 747.217.1832  
 E: JSTONE@DAUMCOMMERCIAL.COM  
 CA DRE #02070402

**AMENITIES MAP**

**DAUM**

COMMERCIAL REAL ESTATE SERVICES

D/AQ Corp. #01129558. Maps Courtesy ©Google & ©Microsoft. Although all information is furnished regarding for sale, rental or financing is from sources deemed reliable, such information has not been verified and no express representation is made nor is any to be implied as to the accuracy thereof, and it is submitted subject to errors, omissions, changes of price, rental or other conditions, prior sale, lease or financing, or withdrawal without notice.