



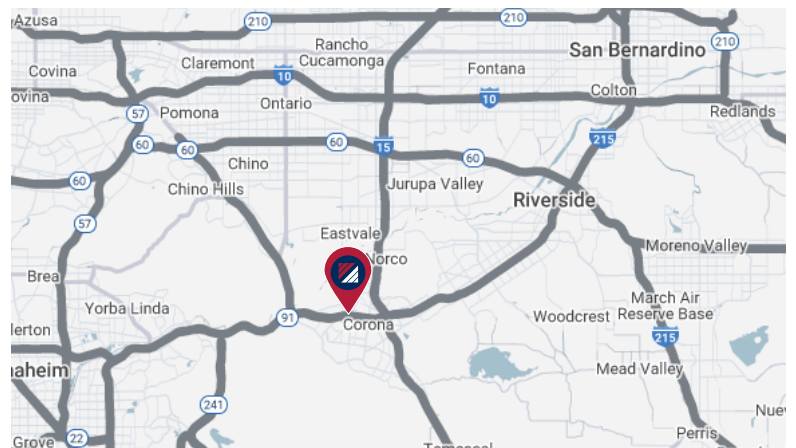
# FOR SUBLEASE

## ±3,360 SF FLEX LIGHT DISTRIBUTION

310 MAPLE STREET, UNIT H AND J | CORONA | CA

### PROPERTY HIGHLIGHTS:

- ±1,600 SF of Office
- 2:1 Parking Ratio
- 14' Clearance for Warehouse
- 2 GL Doors
- Pomona Road Street Frontage
- 100 Amps of Power
- 2 Restrooms
- Easy 91 Freeway Access



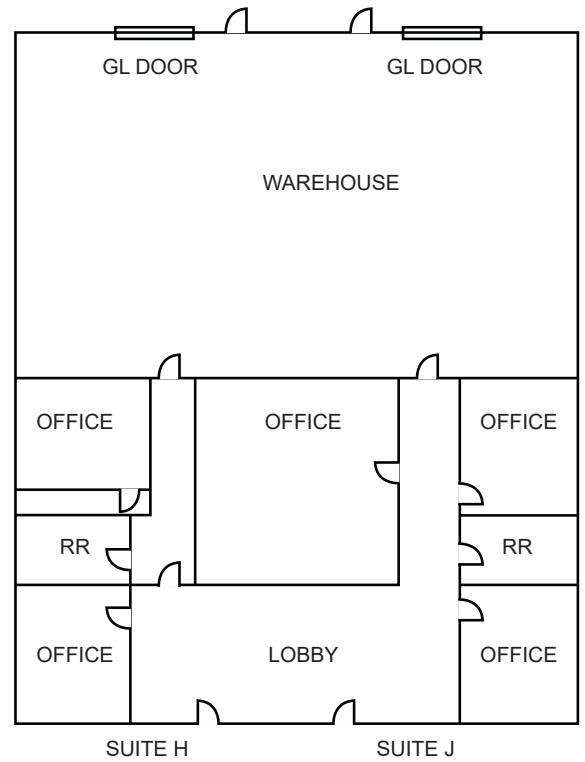
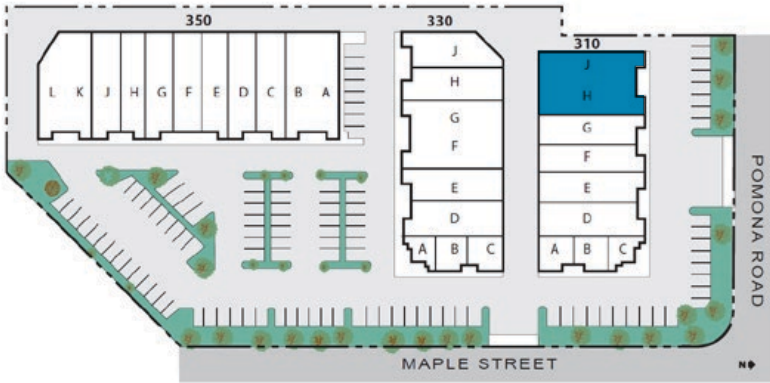
### FOR MORE INFORMATION, PLEASE CONTACT:

**KEN ANDERSEN, CCIM | SIOR**  
EXECUTIVE VICE PRESIDENT  
P: 949.912.0002 | M: 949.350.3933  
E: KANDERSEN@DAUMCRE.COM  
CA DRE #0902084

**GABE DUPLANTIER**  
ASSOCIATE  
P: 909.912.0008 | M: 714.421.9275  
E: GDUPLANTIER@DAUMCRE.COM  
CA DRE # 02178517



# FLOOR PLAN & PHOTOS



FOR MORE INFORMATION, PLEASE CONTACT:

**KEN ANDERSEN, CCIM | SIOR**  
 EXECUTIVE VICE PRESIDENT  
 P: 949.912.0002 | M: 949.350.3933  
 E: KANDERSEN@DAUMCRE.COM  
 CA DRE #0902084

**GABE DUPLANTIER**  
 ASSOCIATE  
 P: 909.912.0008 | M: 714.421.9275  
 E: GDUPLANTIER@DAUMCRE.COM  
 CA DRE # 02178517

DAUM Commercial Real Estate Services, Inc. #01129558. Maps Courtesy ©Google & ©Microsoft. Although all information is furnished regarding for sale, rental or financing from sources deemed reliable, such information has not been verified and no express representation is made nor is any to be implied as to the accuracy thereof, and it is submitted subject to errors, omissions, changes of price, rental or other conditions, prior sale, lease or financing, or withdrawal without notice.

www.daumcommercial.com

