



Fisher St.

Fisher St.

N Ford Blvd.

N Ford Blvd.

N Ford Blvd.

N Ford Blvd.

FOR SALE

3,030 SF ON 7,405 SF LOT

4516 FISHER ST.

LOS ANGELES | CA

FOR MORE INFORMATION, PLEASE CONTACT:

KURT YACKO

VICE PRESIDENT

P: 562.692.7876 | M: 949.903.0496

kurt.yacko@daumcommercial.com

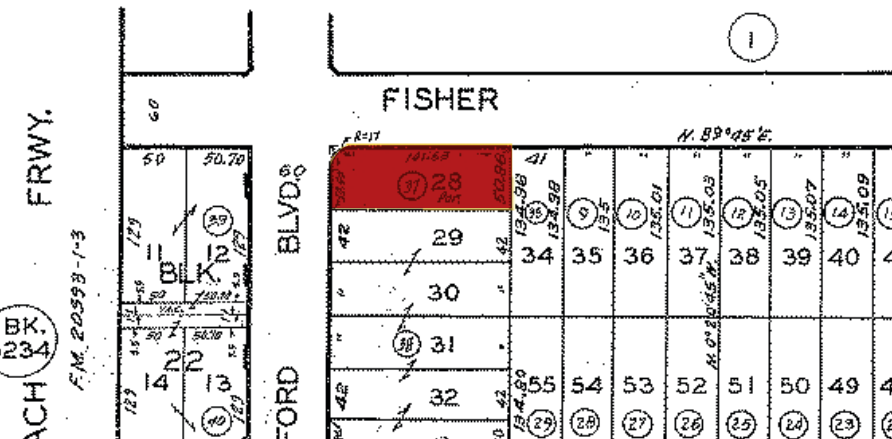
CADRE #01989353

D/AQ Corp. #01129558. Maps Courtesy ©Google & ©Microsoft. Although all information is furnished regarding for sale, rental or financing is from sources deemed reliable, such information has not been verified and no express representation is made nor is any to be implied as to the accuracy thereof, and it is submitted subject to errors, omissions, changes of price, rental or other conditions, prior sale, lease or financing, or withdrawal without notice.



PROPERTY HIGHLIGHTS

- 3,030 SF Available
- 160 SF Office Space
- 1 (14' x 10)' Roll Up Door
- 20' Ceiling Clearance
- Built in 1980
- Sprinklers
- 200 Amps
- Zoning: M1
- Fenced and Secured Yard



FOR SALE

3,030 SF ON 7,405 SF LOT
4516 FISHER ST.

LOS ANGELES | CA

FOR MORE INFORMATION, PLEASE CONTACT:

KURT YACKO
 VICE PRESIDENT
 P: 562.692.7876 | M: 949.903.0496
 kurt.yacko@daumcommercial.com
 CADRE #01989353

AERIAL





FOR SALE

3,030 SF ON 7,405 SF LOT

4516 FISHER ST.

LOS ANGELES | CA

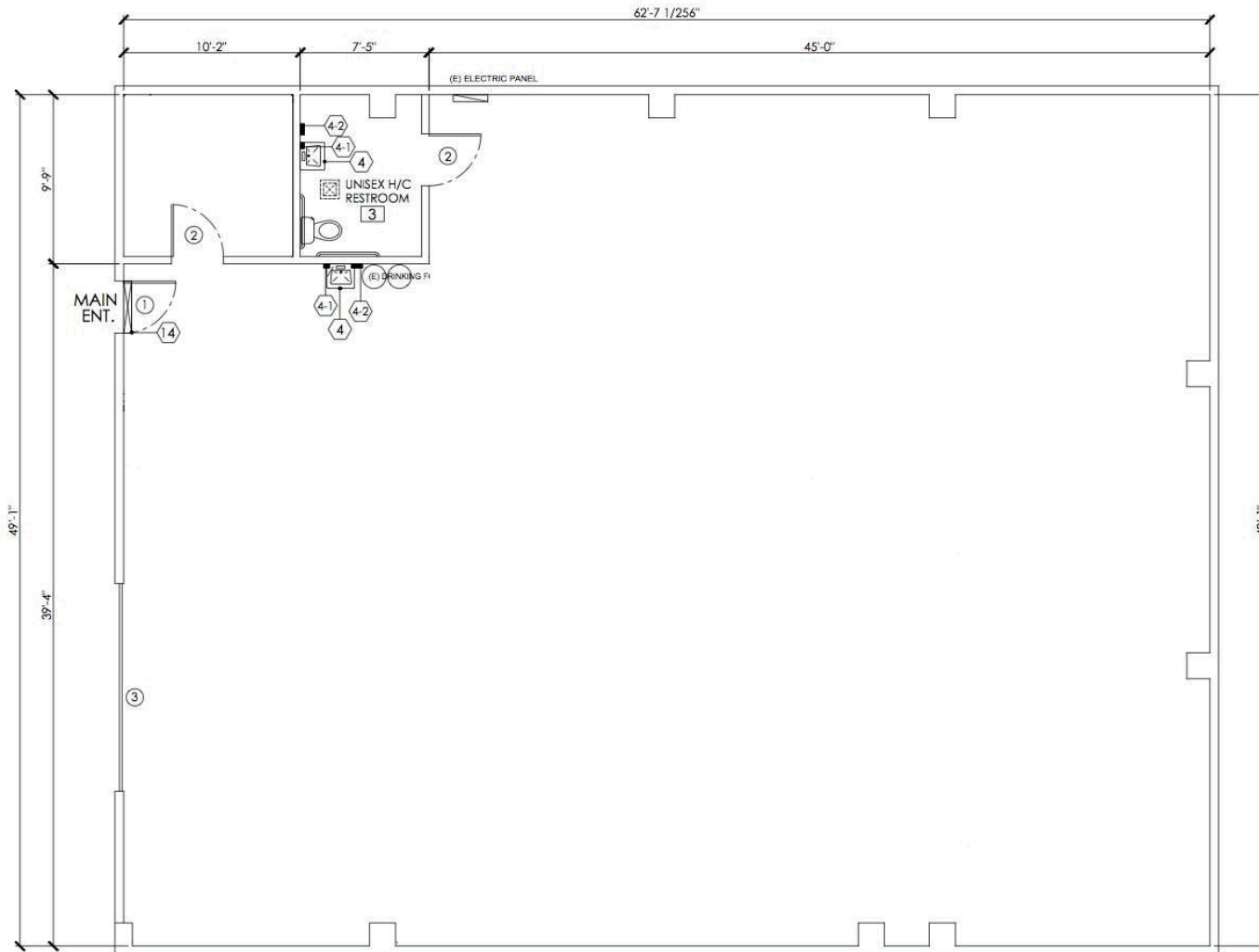
FOR MORE INFORMATION, PLEASE CONTACT:

KURT YACKO
VICE PRESIDENT
P: 562.692.7876 | M: 949.903.0496
kurt.yacko@daumcommercial.com
CADRE #01989353

PHOTOS

DAUM
COMMERCIAL REAL ESTATE SERVICES

D/AQ Corp. #01129558. Maps Courtesy ©Google & ©Microsoft. Although all information is furnished regarding for sale, rental or financing is from sources deemed reliable, such information has not been verified and no express representation is made nor is any to be implied as to the accuracy thereof, and it is submitted subject to errors, omissions, changes of price, rental or other conditions, prior sale, lease or financing, or withdrawal without notice.



*NOT TO SCALE

FOR SALE

3,030 SF ON 7,405 SF LOT

4516 FISHER ST.

LOS ANGELES | CA

FOR MORE INFORMATION, PLEASE CONTACT:

KURT YACKO
 VICE PRESIDENT
 P: 562.692.7876 | M: 949.903.0496
 kurt.yacko@daumcommercial.com
 CADRE #01989353

SITE PLAN





FOR SALE

3,030 SF ON 7,405 SF LOT
4516 FISHER ST.

LOS ANGELES | CA

FOR MORE INFORMATION, PLEASE CONTACT:

KURT YACKO
 VICE PRESIDENT
 P: 562.692.7876 | M: 949.903.0496
 kurt.yacko@daumcommercial.com
 CADRE #01989353

AMENITIES MAP



D/AQ Corp. #01129558. Maps Courtesy ©Google & ©Microsoft. Although all information is furnished regarding for sale, rental or financing is from sources deemed reliable, such information has not been verified and no express representation is made nor is any to be implied as to the accuracy thereof, and it is submitted subject to errors, omissions, changes of price, rental or other conditions, prior sale, lease or financing, or withdrawal without notice.