



245-D5

FISCHER AVENUE
COSTA MESA | CA

FOR SUBLEASE ±4,300 SF

INDUSTRIAL FLEX CONDO

FOR MORE INFORMATION PLEASE CONTACT:

DEVIN RAY
VICE PRESIDENT

P: 949.242.1065
dray@daumcre.com
CADRE #02018130



TURNER WHITE
ASSOCIATE

P: 949.242.1717 | M: 925.550.8422
twhite@daumcommercial.com
CADRE #02249148

Although all information is furnished regarding for sale, rental or financing is from sources deemed reliable, such information has not been verified and no express representation is made nor is any to be implied as to the accuracy thereof, and it is submitted subject to errors, omissions, changes of price, rental or other conditions, prior sale, lease or financing, or withdrawal without notice.

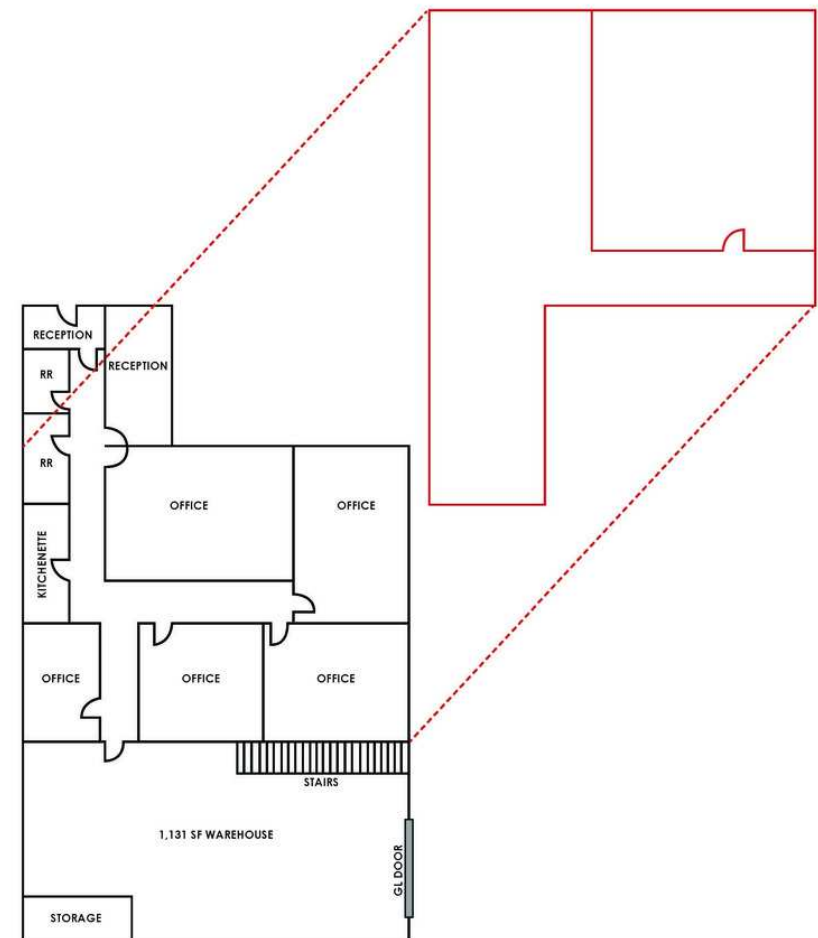
DAUM
COMMERCIAL REAL ESTATE SERVICES

FOR SUBLEASE - ±4,300 SF

245-D5 FISCHER AVENUE, COSTA MESA

PROPERTY HIGHLIGHTS:

- ±4,300 SF Office, Warehouse, & Mezzanine
- ±1,500 SF Office Space & ±1,500 Warehouse
- ±1,300 SF Mezzanine (Included in Total SF)
- Six (6) Newly Refurbished Offices
- End Unit, Drive Around Access
- Kitchenette & Two (2) Restrooms
- (1) 16'x14' Oversized Automatic GL Door
- Sprinklered, Air-Lines, 200 Amps (Verify)
- Prime Costa Mesa/ Airport Location
- Immediate Freeway Access (405/55/73)
- Sublease expires April 30, 2027



DEVIN RAY
VICE PRESIDENT

P: 949.242.1065
dray@daumcre.com
CADRE #02018130

TURNER WHITE
ASSOCIATE

P: 949.242.1717 | M: 925.550.8422
twhite@daumcommercial.com
CADRE #02249148

FOR SUBLEASE - ±4,300 SF

245-D5 FISCHER AVENUE, COSTA MESA



DEVIN RAY
VICE PRESIDENT



P: 949.242.1065
dray@daumcre.com
CADRE #02018130

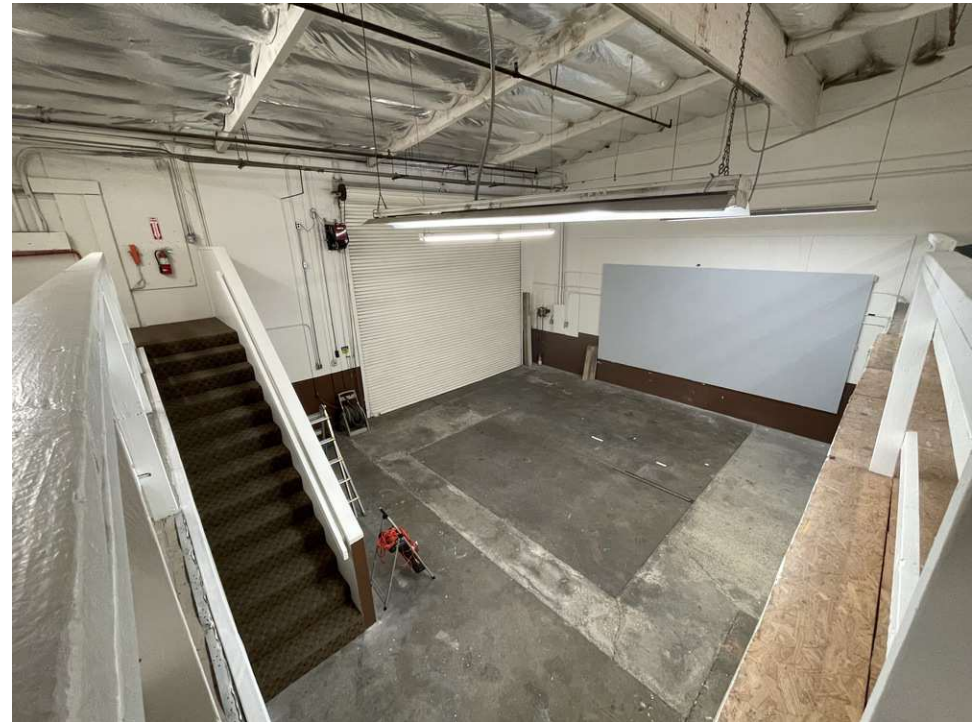
TURNER WHITE
ASSOCIATE

P: 949.242.1717 | M: 925.550.8422
twhite@daumcommercial.com
CADRE #02249148

Although all information is furnished regarding for sale, rental or financing is from sources deemed reliable, such information has not been verified and no express representation is made nor is any to be implied as to the accuracy thereof, and it is submitted subject to errors, omissions, changes of price, rental or other conditions, prior sale, lease or financing, or withdrawal without notice.

FOR SUBLEASE - ±4,300 SF

245-D5 FISCHER AVENUE, COSTA MESA



DEVIN RAY
VICE PRESIDENT



P: 949.242.1065
dray@daumcre.com
CADRE #02018130

TURNER WHITE
ASSOCIATE

P: 949.242.1717 | M: 925.550.8422
twhite@daumcommercial.com
CADRE #02249148

Although all information is furnished regarding for sale, rental or financing is from sources deemed reliable, such information has not been verified and no express representation is made nor is any to be implied as to the accuracy thereof, and it is submitted subject to errors, omissions, changes of price, rental or other conditions, prior sale, lease or financing, or withdrawal without notice.