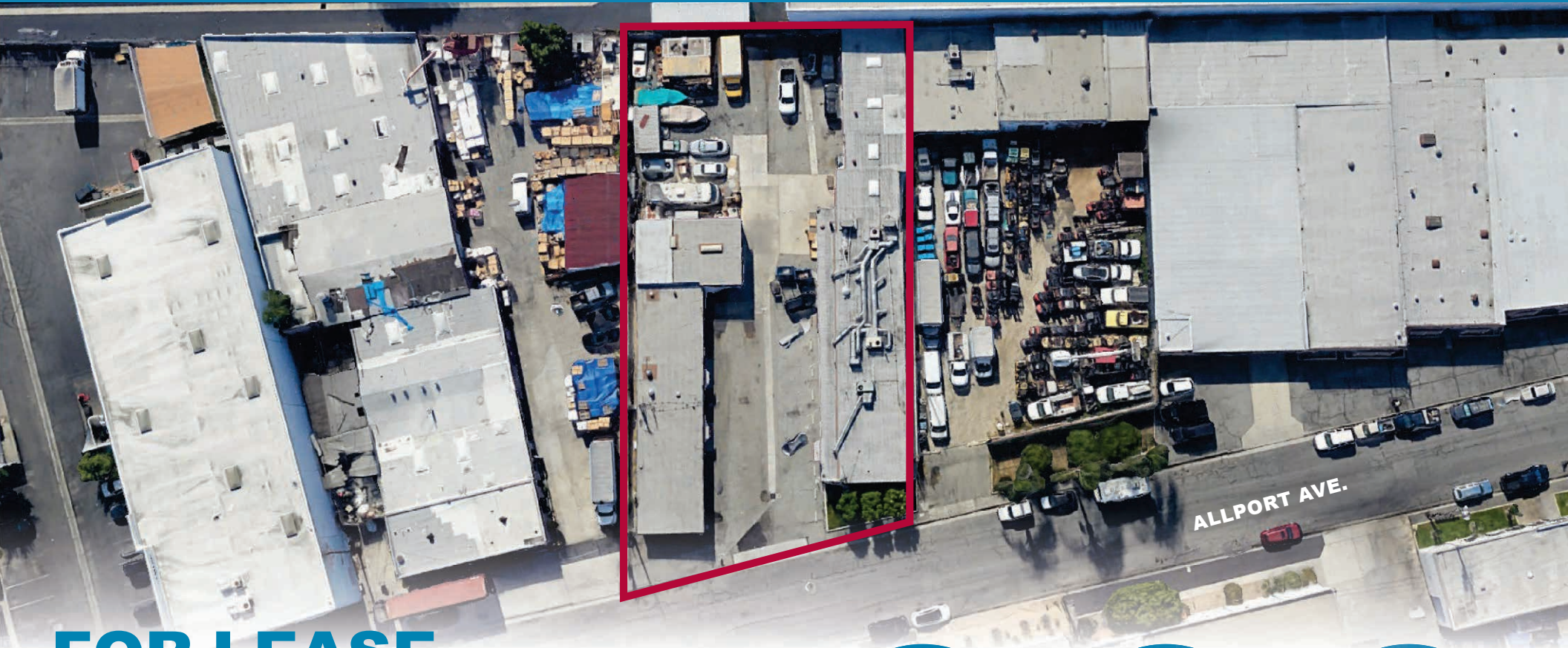


HEAVY POWER - GREAT FOR MANUFACTURING



FOR LEASE
±8,572 SF ON 22,068 SF
8231-8235 ALLPORT AVE.
SANTA FE SPRINGS | CA 90670

FOR MORE INFORMATION, PLEASE CONTACT:



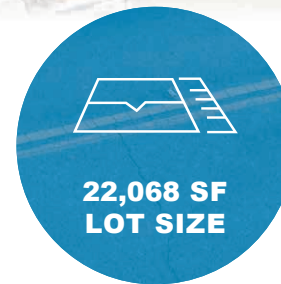
LUI SALAZAR
ASSOCIATE
D: 213.270.2229
lsalazar@daumcommercial.com
CA Lic. #02118236



ALONDRA SALAZAR
ASSOCIATE
D: 213.270.2226
asalazar@daumcommercial.com
CA Lic. #02222628



SAM CHU
EXECUTIVE VICE PRESIDENT
D: 562.207.3303
schu@daumcommercial.com
CA Lic. #01186837



D/AQ Corp. #01129558. Maps Courtesy ©Google & ©Microsoft. Although all information is furnished regarding for sale, rental or financing is from sources deemed reliable, such information has not been verified and no express representation is made nor is any to be implied as to the accuracy thereof, and it is submitted subject to errors, omissions, changes of price, rental or other conditions, prior sale, lease or financing, or withdrawal without notice.

FOR LEASE

±8,572 SF ON 22,068 SF

8231-8235 ALLPORT AVE.

SANTA FE SPRINGS | CA 90670

PROPERTY HIGHLIGHTS



2 BUILDINGS
(±8,572 SF TOTAL)
ON ±22,068 SF LOT



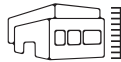
±943 SF
OFFICE SPACE



SECURED
LOT



CENTRALLY
LOCATED

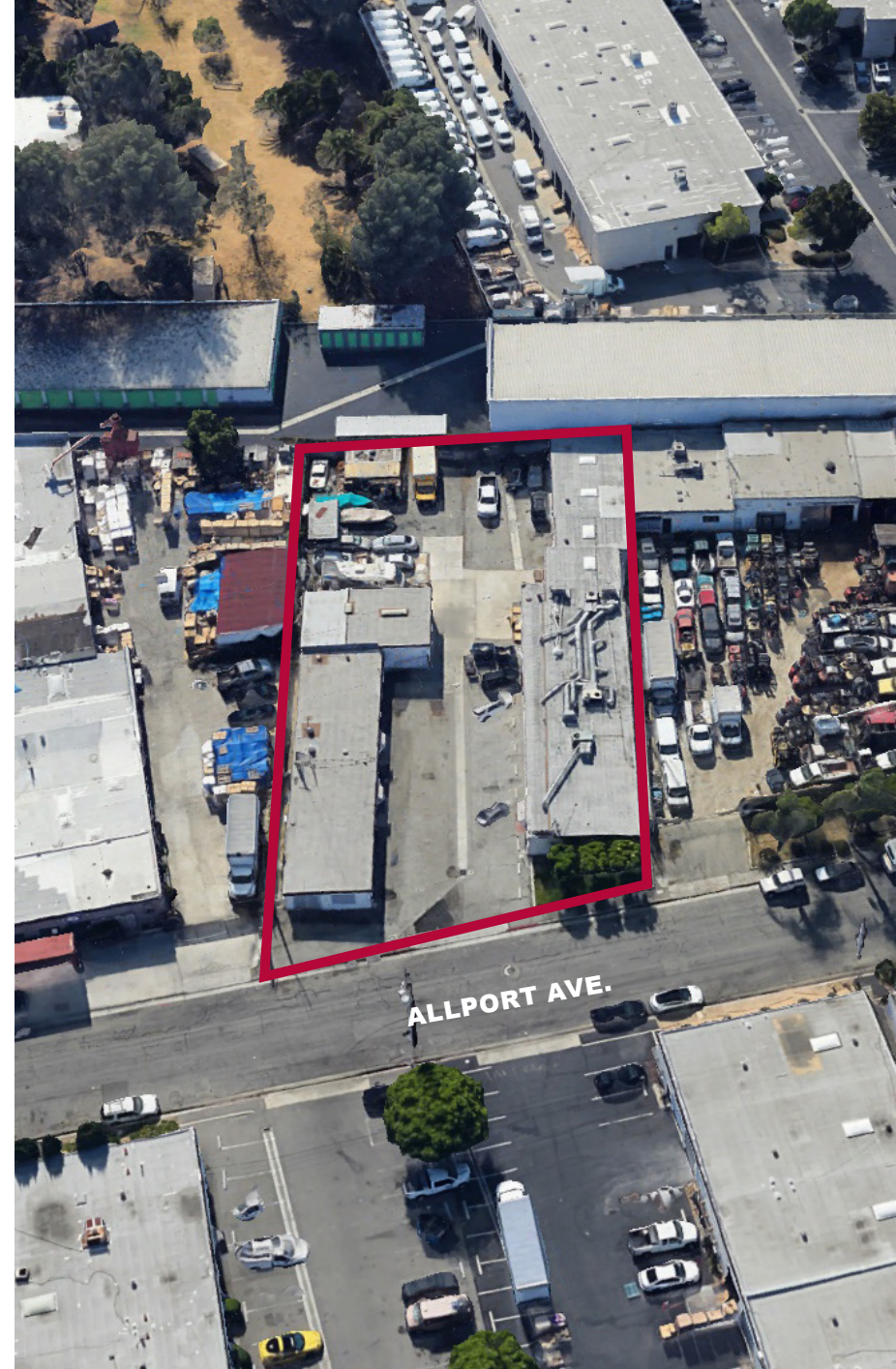


8'
CLEAR HT



HVAC & GAS

BUILDINGS	BUILDING SF	OFFICE SF	POWER	GL DOORS	APN
8231 Allport Ave.	5,172 SF	720 SF	600 Amps of 240V	1	8169-011-029
8235 Allport Ave.	3,400 SF	223 SF	400 Amps of 240V	1	8169-011-030



FOR MORE INFORMATION, PLEASE CONTACT:

2



LUI SALAZAR
ASSOCIATE
D: 213.270.2229
lsalazar@daumcommercial.com
CA Lic. #02118236



ALONDRA SALAZAR
ASSOCIATE
D: 213.270.2226
asalazar@daumcommercial.com
CA Lic. #02222628

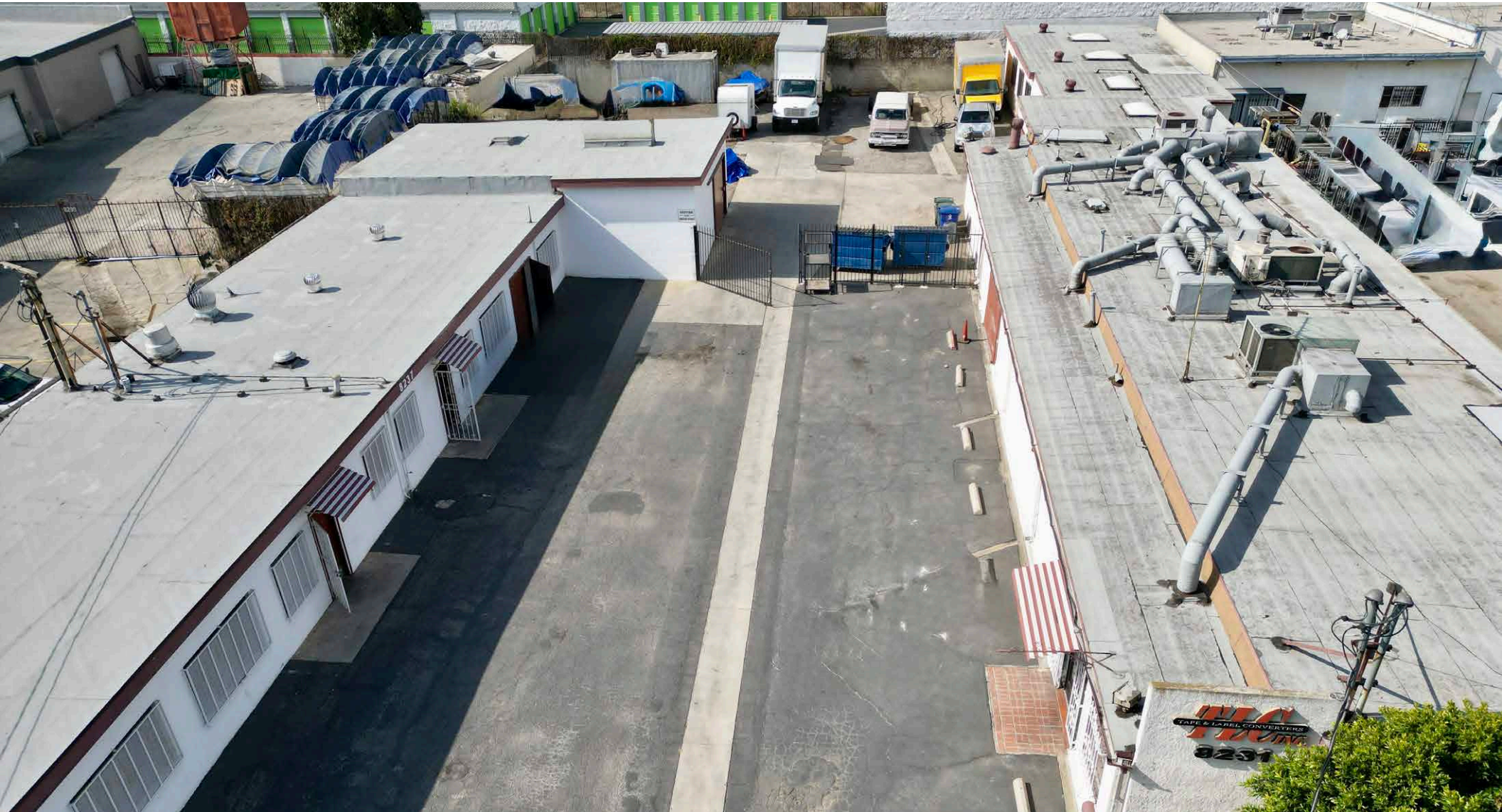


SAM CHU
EXECUTIVE VICE PRESIDENT
D: 562.207.3303
schu@daumcommercial.com
CA Lic. #01186837

AERIAL

FOR LEASE
±8,572 SF ON 22,068 SF

8231-8235 ALLPORT AVE.
SANTA FE SPRINGS | CA 90670



FOR MORE INFORMATION, PLEASE CONTACT:

3



LUI SALAZAR
ASSOCIATE
D: 213.270.2229
lsalazar@daumcommercial.com
CA Lic. #02118236



ALONDRA SALAZAR
ASSOCIATE
D: 213.270.2226
asalazar@daumcommercial.com
CA Lic. #02222628



SAM CHU
EXECUTIVE VICE PRESIDENT
D: 562.207.3303
schu@daumcommercial.com
CA Lic. #01186837

PHOTOS

FOR LEASE
±8,572 SF ON 22,068 SF

8231-8235 ALLPORT AVE.
SANTA FE SPRINGS | CA 90670



FOR MORE INFORMATION, PLEASE CONTACT:

4



LUI SALAZAR
ASSOCIATE
D: 213.270.2229
lsalazar@daumcommercial.com
CA Lic. #02118236



ALONDRA SALAZAR
ASSOCIATE
D: 213.270.2226
asalazar@daumcommercial.com
CA Lic. #02222628



SAM CHU
EXECUTIVE VICE PRESIDENT
D: 562.207.3303
schu@daumcommercial.com
CA Lic. #01186837

PHOTOS

FOR LEASE

±8,572 SF ON 22,068 SF

8231-8235 ALLPORT AVE.
SANTA FE SPRINGS | CA 90670



FOR MORE INFORMATION, PLEASE CONTACT:

5



LUI SALAZAR
ASSOCIATE
D: 213.270.2229
lsalazar@daumcommercial.com
CA Lic. #02118236



ALONDRA SALAZAR
ASSOCIATE
D: 213.270.2226
asalazar@daumcommercial.com
CA Lic. #02222628



SAM CHU
EXECUTIVE VICE PRESIDENT
D: 562.207.3303
schu@daumcommercial.com
CA Lic. #01186837

AMENITIES
MAP

FOR LEASE

±8,572 SF ON 22,068 SF

8231-8235 ALLPORT AVE. | SANTA FE SPRINGS | CA

FOR MORE INFORMATION, PLEASE CONTACT:



LUI SALAZAR
ASSOCIATE
D: 213.270.2229
lsalazar@daumcommercial.com
CA Lic. #02118236



ALONDRA SALAZAR
ASSOCIATE
D: 213.270.2226
asalazar@daumcommercial.com
CA Lic. #02222628



SAM CHU
EXECUTIVE VICE PRESIDENT
D: 562.207.33034
schu@daumcommercial.com
CA Lic. #01186837

Although all information is furnished regarding for sale, rental or financing from sources deemed reliable, such information has not been verified and no express representation is made nor is any to be implied as to the accuracy thereof, and it is submitted subject to errors, omissions, changes of price, rental or other conditions, prior sale, lease or financing, or withdrawal without notice. D/AQ Corp. # 01129558