

OUTSTANDING EL SEGUNDO LOCATION



2041
E. MARIPOSA AVE.
EL SEGUNDO | CA

FOR LEASE
24,000 SF | INDUSTRIAL

FOR MORE INFORMATION, CONTACT:

BRAD LEVIN
E.V.P./PRINCIPAL

P: 310.538.6728 | blevin@daumcre.com
CADRE #01020885

JACK STONE
ASSOCIATE VICE PRESIDENT

P: 310.538.6722 | jstone@daumcre.com
CADRE #02070402

SUZANNE SULLIVAN
ASSOCIATE

P: 310.538.6719 | ssullivan@daumcre.com
CADRE #02230120



FOR LEASE

24,000 SF | INDUSTRIAL

2041 E. MARIPOSA AVE.
EL SEGUNDO | CA

AVAILABLE SF

24,000 SF

PARKING

±60

RAIL STATION

Nearby (Green Line)

DOCK HIGH

2 (Well)

HEAVY POWER

1,000 Amps
(2,500 Amp Power Panel)

PROPERTY SPECIFICATIONS

- Outstanding El Segundo Location
- Just Minutes to LAX, 105 and 405 Freeways
- Approx. 6,000 Square Feet of Office
- Light Rail Station Nearby (Green Line)
- (2) Dock High (Well)
- (2) Ground Level Loading
- Large Fenced & Paved Yard
- Sprinklered
- Heavy Power: 1000 Amps (2500 Amp Power Panel)
- 100% HVAC in Warehouse
- ±60 Parking



FOR LEASE

24,000 SF | INDUSTRIAL

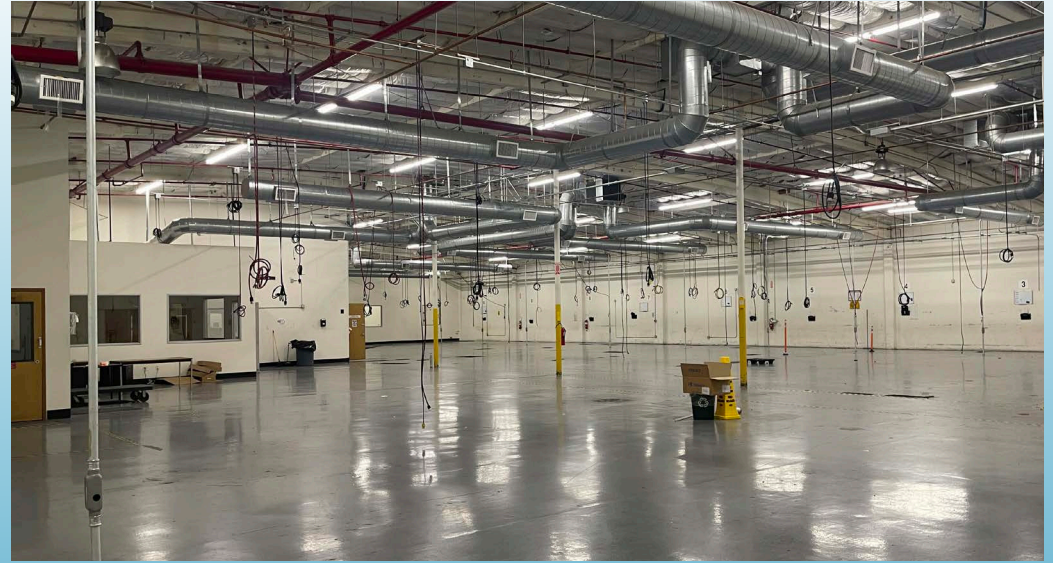
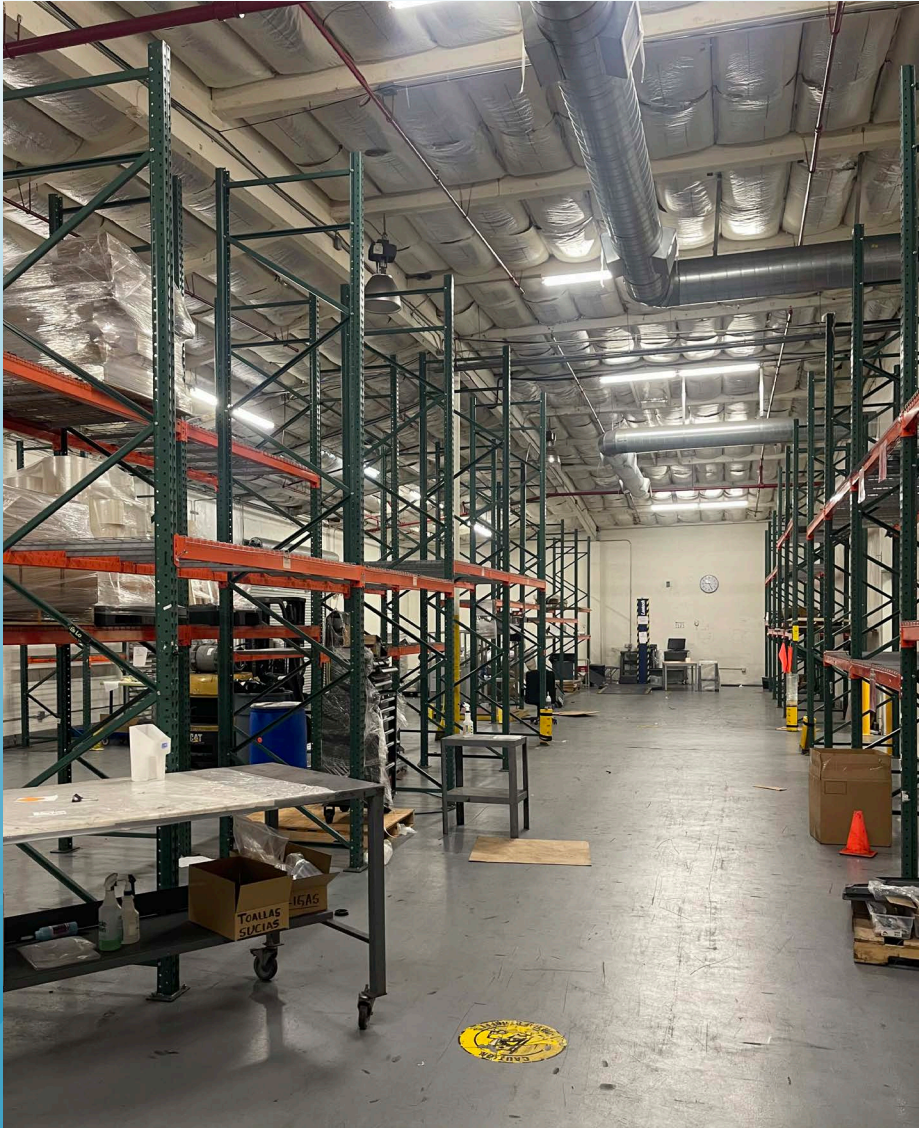
2041 E. MARIPOSA AVE.
EL SEGUNDO | CA



FOR LEASE

24,000 SF | INDUSTRIAL

2041 E. MARIPOSA AVE.
EL SEGUNDO | CA



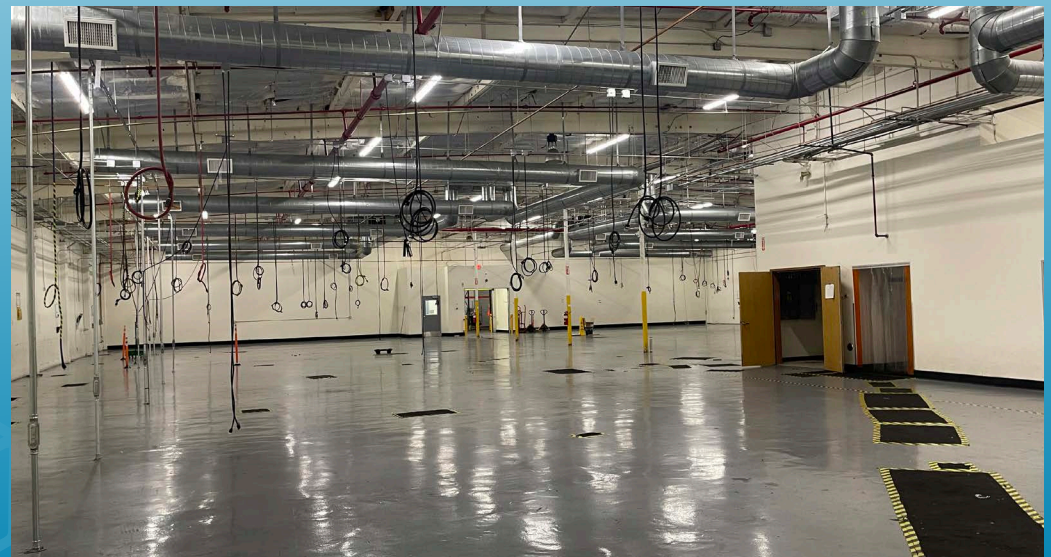
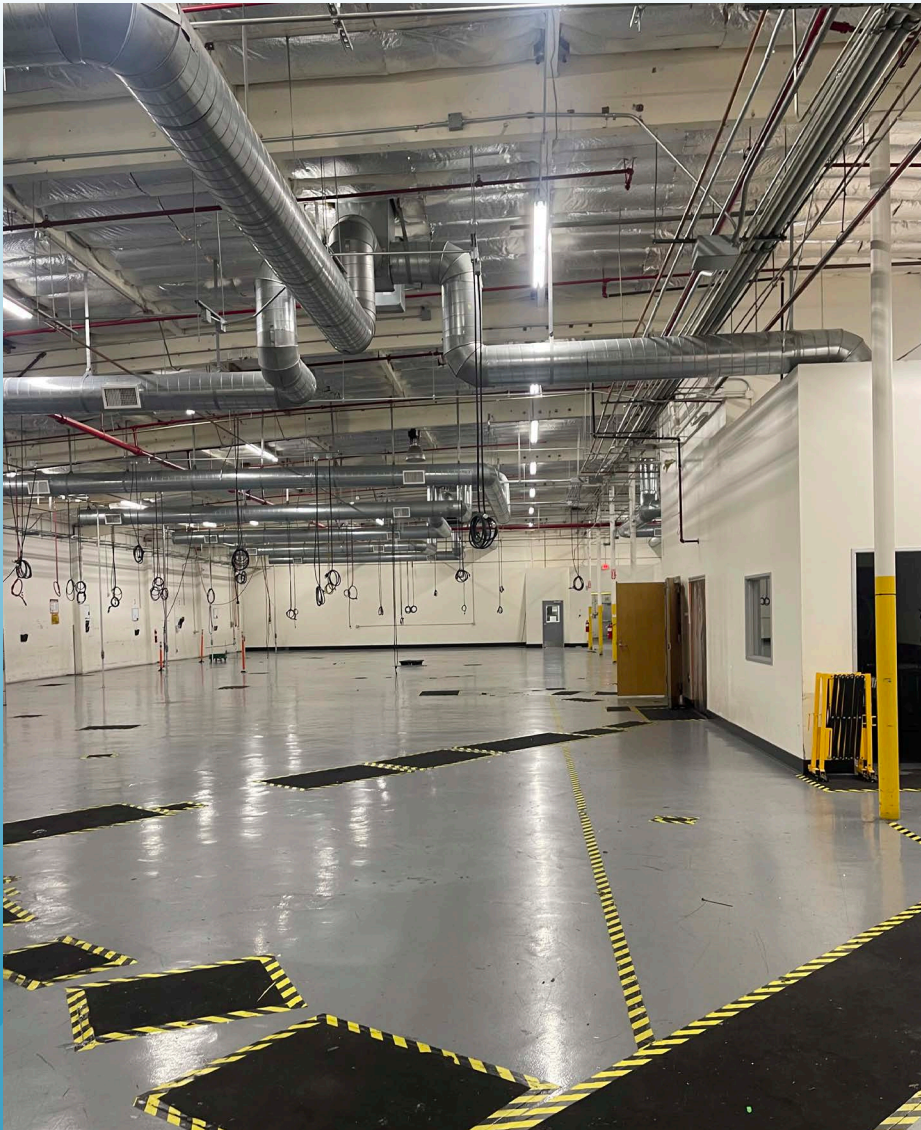
D/AQ Corp. #01129558. Maps Courtesy ©Google & ©Microsoft. Although all information is furnished regarding for sale, rental or financing is from sources deemed reliable, such information has not been verified and no express representation is made nor is any to be implied as to the accuracy thereof, and it is submitted subject to errors, omissions, changes of price, rental or other conditions, prior sale, lease or financing, or withdrawal without notice.

DAUM
COMMERCIAL REAL ESTATE SERVICES

FOR LEASE

24,000 SF | INDUSTRIAL

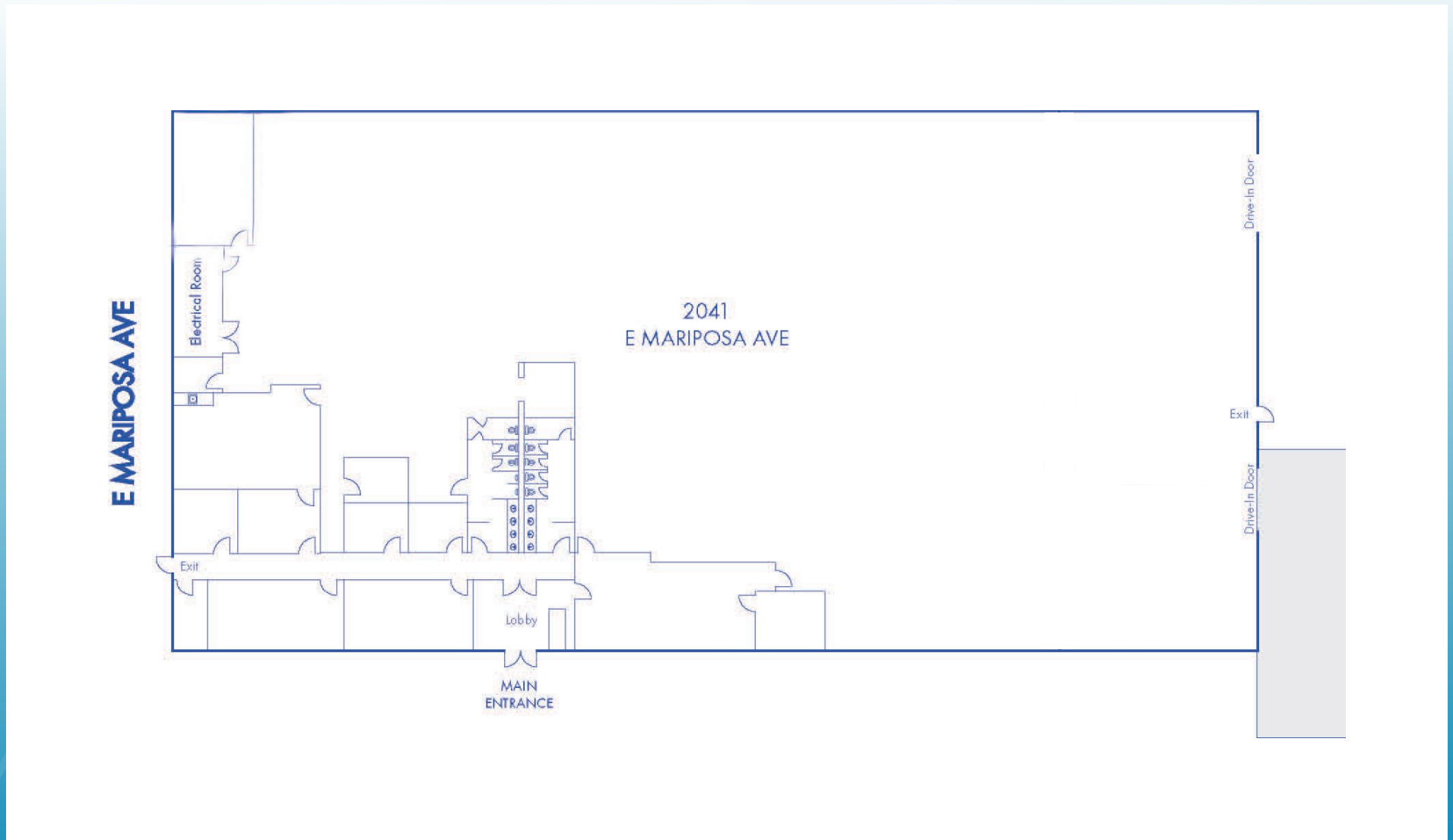
2041 E. MARIPOSA AVE.
EL SEGUNDO | CA



FOR LEASE

24,000 SF | INDUSTRIAL

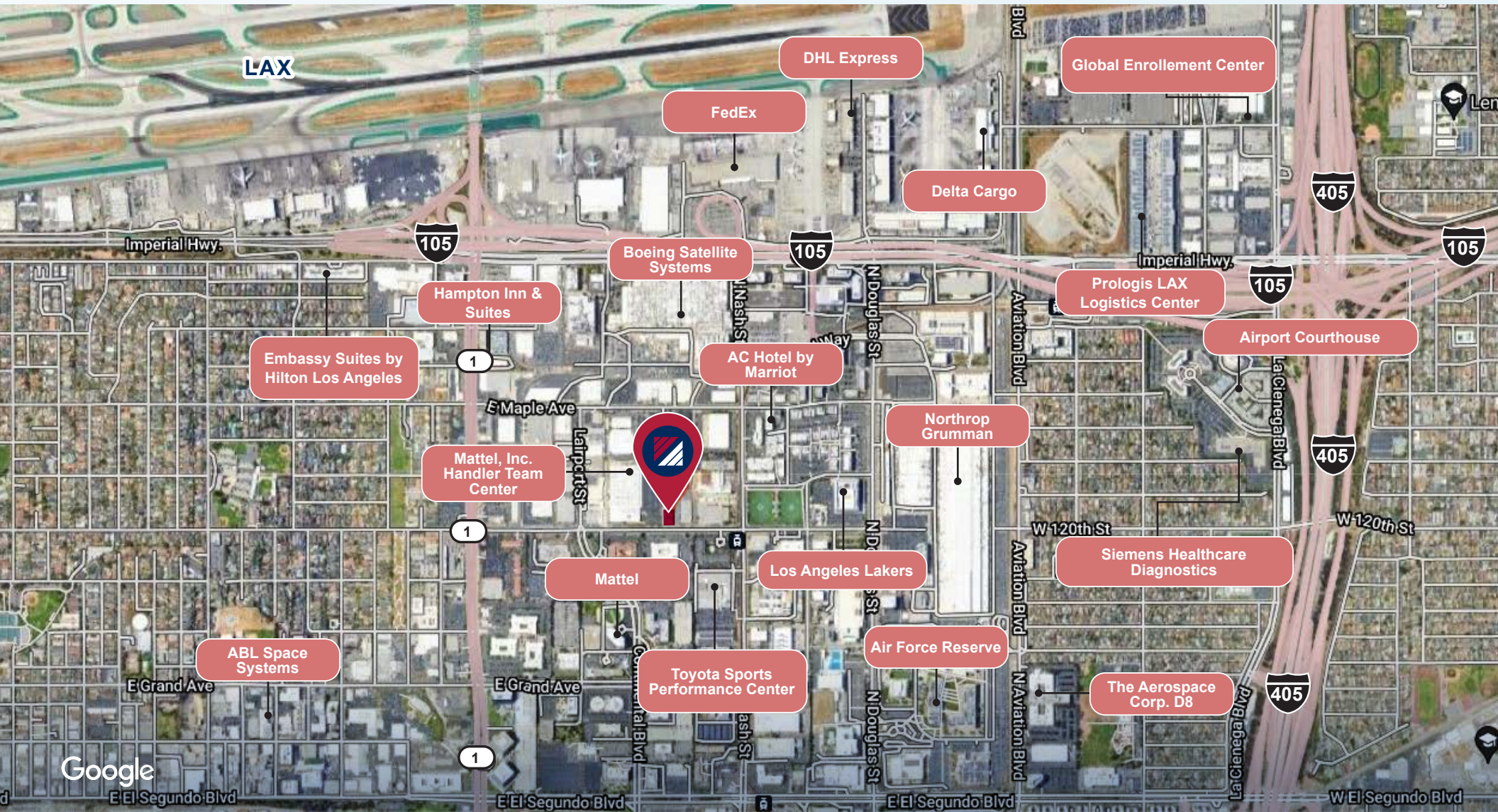
2041 E. MARIPOSA AVE.
EL SEGUNDO | CA



FOR LEASE

24,000 SF | INDUSTRIAL

2041 E. MARIPOSA AVE.
EL SEGUNDO | CA



Google